

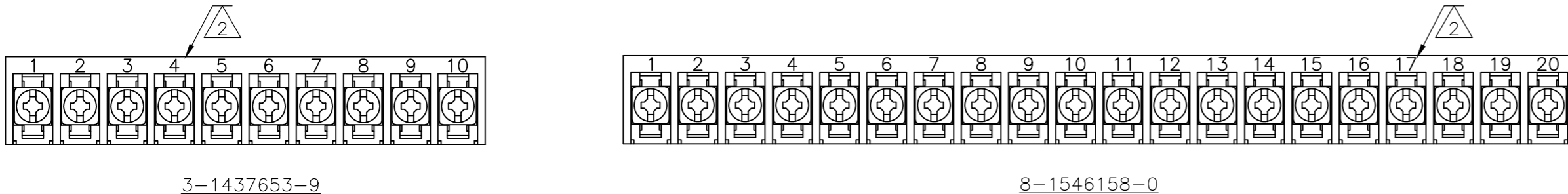
THIS DRAWING IS UNPUBLISHED. RELEASED FOR PUBLICATION
 © COPYRIGHT - By - ALL RIGHTS RESERVED.

LOC	DIST	REVISIONS					
FT	0	P	LTR	DESCRIPTION	DATE	DWN	APVD
		P		REVISED PER ECO-13-011850	13NOV2013	KH	MB



DETAIL FOR P/N's 1-1546160-6, 1-1546160-7 AND 1-1546160-8

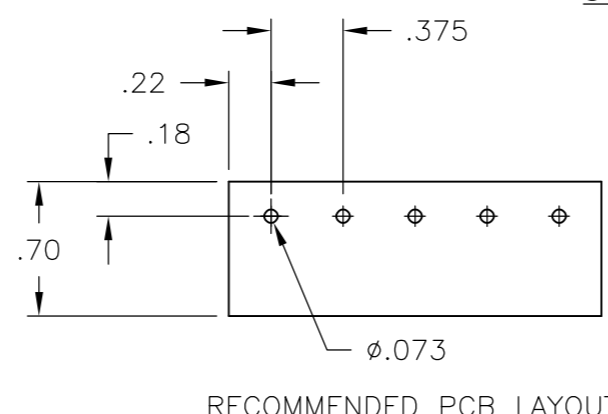
- 1 CAPTIVE SCREWS.
- 2 MARK WITH WHITE PERMANENT INK.
- 3 ALL SCREWS TO BE DRIVEN DOWN TO TERMINAL SURFACE.
- 4 NICKEL PLATED BRASS SCREWS.
- 5 PRELIMINARY PART NUMBER.
- 6 OBSOLETE PARTS: OBSOLETE CIS STREAMLINING PER D.RENAUD/D.SINISI



MATERIAL:
 HOUSING: THERMOPLASTIC, UL94V-0 BLACK.
 TERMINALS: BRIGHT TIN PLATED, COPPER ALLOY.
 SCREWS: 6-32, STEEL, ZINC PLATED WITH CLEAR CHROMATE.

ELECTRICAL:
 CURRENT RATING UL/CSA:
 CLASS C: 25A, 300V.
 CLASS D: 5A, 600V.
 WIRE RANGE: 12-22 AWG

MECHANICAL:
 RECOMMENDED TIGHTENING TORQUE: 7 IN-LBS.
 OPERATING TEMP.: 105°C MAX



NO OF POS	DIM A REF	CATALOG NUMBER	PART NUMBER
30	11.311	6PCV-30-006	4-1546686-5
29	10.936	6PCV-29-006	1-1437656-2
28	10.561	6PCV-28-006	8-1546158-6
27	10.186	6PCV-27-006	8-1546158-5
26	9.811	6PCV-26-006	4-1437654-5
25	9.436	6PCV-25-006	4-1437654-1
24	9.061	6PCV-24-006	8-1546158-2
23	8.686	6PCV-23-006	4-1546686-3
22	8.311	6PCV-22-006	3-1437654-4
21	7.936	6PCV-21-006	3-1437654-1
20	7.561	6PCV-20-323	8-1546158-0
20	7.561	6PCV-20-006	1-1437654-9
19	7.186	6PCV-19-006	1-1437654-4
18	6.811	6PCV-18-006	1437654-7
17	6.436	6PCV-17-899	1437654-2
17	6.436	6PCV-17-006	9-1437653-8
16	6.061	6PCV-16-1389	4-1546686-9
16	6.061	6PCV-16-1388	4-1546686-8
16	6.061	6PCV-16-1047	8-1437653-3
16	6.061	6PCV-16-006	8-1437653-0
15	5.686	6PCV-15-1298	1-1546160-8
15	5.686	6PCV-15-006	7-1437653-4
14	5.311	6PCV-14-006	6-1437653-8
13	4.936	6PCV-13-1297	1-1546160-7
13	4.936	6PCV-13-006	6-1437653-3
12	4.561	6PCV-12-1296	1-1546160-6
12	4.561	6PCV-12-006	5-1437653-1
11	4.186	6PCV-11-006	4-1437653-5
10	3.811	6PCV-10-1269	3-1437653-9
10	3.811	6PCV-10-006	3-1437653-5
9	3.436	6PCV-09-002	1546262-3
9	3.436	6PCV-09-006	2-1437653-5
8	3.061	6PCV-08-1394	1546262-7
8	3.061	6PCV-08-1314	1-1437653-7
8	3.061	6PCV-08-006	1-1437653-3
7	2.686	6PCV-07-1399	1546262-9
7	2.686	6PCV-07-006	1437653-7
6	2.311	6PCV-06-1398	1546262-8
6	2.311	6PCV-06-002	1546262-4
6	2.311	6PCV-06-006	9-1437652-5
5	1.936	6PCV-05-002	5-1546686-0
5	1.936	6PCV-05-1267	8-1437652-5
5	1.936	6PCV-05-006	8-1437652-2
4	1.561	6PCV-04-1268	7-1437652-3
4	1.561	6PCV-04-1143	7-1437652-2
4	1.561	6PCV-04-006	6-1437652-7
3	1.186	6PCV-03-1385	4-1546686-7
3	1.186	6PCV-03-1384	4-1546686-6
3	1.186	6PCV-03-006	5-1437652-4
2	.811	6PCV-02-1393	1546262-6
2	1.186	6PCV-02-807	4-1546158-5
2	.811	6PCV-02-1313	4-1437652-5
2	.811	6PCV-02-1216	4-1546158-4
2	.811	6PCV-02-006	3-1437652-9

THIS DRAWING IS A CONTROLLED DOCUMENT.		DWN R BROWN 22APR03		
DIMENSIONS: INCHES		CHK H WAKEEM 22APR03		
TOLERANCES UNLESS OTHERWISE SPECIFIED:		APVD H WAKEEM 22APR03	NAME	
0 PLC ± -		PRODUCT SPEC	6PCV-XX-006	
1 PLC ± -		APPLICATION SPEC	SIZE CAGE CODE DRAWING NO RESTRICTED TO	
2 PLC ± .02		WEIGHT -	A2 00779 C-3-1437652-9	
3 PLC ± .010		CUSTOMER DRAWING	SCALE 1:1 SHEET 1 of 2 REV P	
4 PLC ± -				
ANGLES ± 1°				
FINISH				

THIS DRAWING IS UNPUBLISHED. RELEASED FOR PUBLICATION
 © COPYRIGHT - By - ALL RIGHTS RESERVED.

LOC	DIST	REVISIONS					
FT	0	P	LTR	DESCRIPTION	DATE	DWN	APVD
		-		SEE SHEET 1	-	-	-

DIM A REF	NO OF POS	CATALOG NUMBER	PART NUMBER
3.061	8	6PCV-08-2006	6-1546686-0
1.936	5	6PCV-05-2006	5-1546686-9
.811	2	6PCV-02-2006	5-1546686-8
1.936	5	6PCV-05-006	5-1546686-7
1.186	3	6PCV-03-006-1	5-1546686-6

SEE FIGURE 1



THIS DRAWING IS A CONTROLLED DOCUMENT.		DWN	R BROWN	22APR03			
		CHK	H WAKEEM	22APR03			
		APVD	H WAKEEM	22APR03			
		NAME					
DIMENSIONS: INCHES	TOLERANCES UNLESS OTHERWISE SPECIFIED:	PRODUCT SPEC	6PCV-XX-006				
	0 PLC ± - 1 PLC ± - 2 PLC ± .02 3 PLC ± .010 4 PLC ± - ANGLES ± 1°	APPLICATION SPEC	SIZE	CAGE CODE	DRAWING NO	RESTRICTED TO	
MATERIAL	FINISH	WEIGHT	A2	00779	C=3-1437652-9	-	
CUSTOMER DRAWING			SCALE	1:1	SHEET	2 of 2	
			REV	P			

3-1437652-9

X-ON Electronics

Largest Supplier of Electrical and Electronic Components

Click to view similar products for [Barrier Terminal Blocks](#) category:

Click to view products by [TE Connectivity](#) manufacturer:

Other Similar products are found below :

[CR151D20104](#) [670A-RZ-15-KT20](#) [6C1N03](#) [6PCR-02](#) [6PCR-02-008](#) [6PCR-05-008](#) [6PCR-08-008](#) [6PCR-09-008](#) [6PCR-13-006](#) [6PCR-15-006](#) [6PCR-21-006](#) [6PCV-06-008](#) [6PCV-06-716](#) [6PCV-09-001](#) [6PCV-10-009](#) [6PCV-15-008](#) [6PCV-17-1206](#) [6PCV-20-323](#) [6PCV-20-720](#) [6PCV-30-006](#) [6STR-06-006](#) [6STR-08-006](#) [6STR-12-008](#) [6STR-13-006](#) [6STR-14-008](#) [6STR-16-008](#) [6STR-17-008](#) [6STR-21-008](#) [6STR-25-008](#) [6STR-27-008](#) [6STV-03-006](#) [6STV-03-008](#) [6STV-04-006](#) [6STV-09-006](#) [6STV-10-006](#) [6WWR-03-693](#) [6WWV-12-008](#) [72212603](#) [72506-C](#) [72507-C-50](#) [73203](#) [75505-C](#) [75505-C-50](#) [75510-C](#) [77010-50](#) [7C1N08](#) [812-GP-3/4ST-09](#) [8-1437402-5](#) [8PCR-06-006](#) [8PCR-11-006](#)