

THIS DRAWING IS UNPUBLISHED. RELEASED FOR PUBLICATION
 © COPYRIGHT - By - ALL RIGHTS RESERVED.

LOC	DIST	REVISIONS					
FT	0	P	LTR	DESCRIPTION	DATE	DWN	APVD
		D1		REVISED PER ECO-11-004917	11MAR11	RK	HMR

SPECIFICATIONS:

MATERIALS:

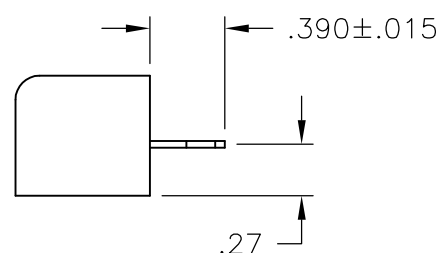
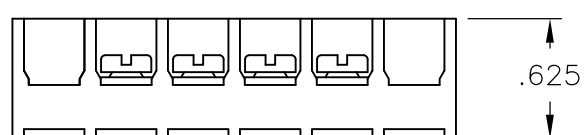
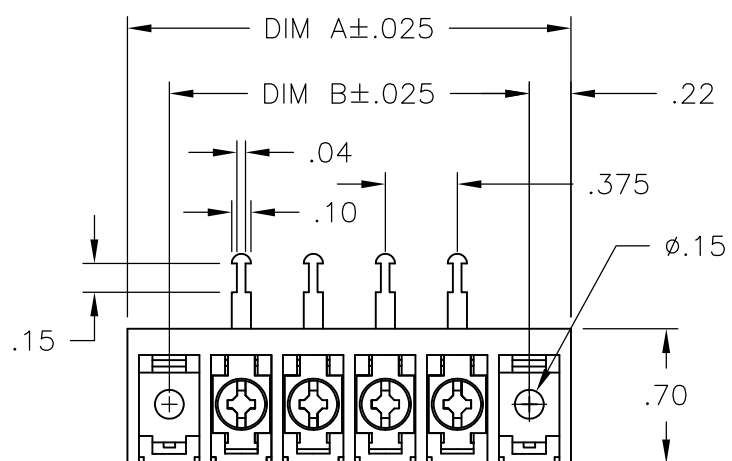
HOUSING: POLYAMIDE, (BLACK) UL94-0
 TERMINALS: COPPER ALLOY, TIN PLATE
 SCREWS: ZINC PLATED STEEL WITH CLEAR CHROMATE COATING

ELECTRICAL:

RATING: 25A 300V
 WIRE RANGE: 12 - 22 AWG

MECHANICAL:

MAXIMUM TORQUE RATING: 7 IN.-LBS.



10.875	11.311	28	6STR-28-008	2-1546242-8
10.500	10.936	27	6STR-27-008	2-1546242-7
10.125	10.561	26	6STR-26-008	2-1546242-6
9.750	10.186	25	6STR-25-008	2-1546242-5
9.375	9.811	24	6STR-24-008	2-1546242-4
9.000	9.436	23	6STR-23-008	2-1546242-3
8.625	9.061	22	6STR-22-008	2-1546242-2
8.250	8.686	21	6STR-21-008	2-1546242-1
7.875	8.311	20	6STR-20-008	2-1546242-0
7.500	7.936	19	6STR-19-008	1-1546242-9
7.125	7.561	18	6STR-18-008	1-1546242-8
6.750	7.186	17	6STR-17-008	1-1546242-7
6.375	6.811	16	6STR-16-008	1-1546242-6
6.000	6.436	15	6STR-15-008	1-1546242-5
5.625	6.061	14	6STR-14-008	1-1546242-4
5.250	5.686	13	6STR-13-008	1-1546242-3
4.875	5.311	12	6STR-12-008	1-1546242-2
4.500	4.936	11	6STR-11-008	1-1546242-1
4.125	4.561	10	6STR-10-008	1-1546242-0
3.750	4.186	9	6STR-09-008	1546242-9
3.375	3.811	8	6STR-08-008	7-1437654-2
3.000	3.436	7	6STR-07-008	796988-7
2.625	3.061	6	6STR-06-008	1546242-6
2.250	2.686	5	6STR-05-008	9-1546158-4
1.875	2.311	4	6STR-04-008	1546242-4
1.500	1.936	3	6STR-03-008	796988-6
1.125	1.561	2	6STR-02-008	8-1546158-9
DIM B	DIM A	NO. OF POS.	BUCHANAN PART NO.	PART NO.

THIS DRAWING IS A CONTROLLED DOCUMENT.		DWN E. ZANOLINI 04FEB2002	TE Connectivity			
DIMENSIONS: INCHES		CHK S. YODER 04FEB02				
TOLERANCES UNLESS OTHERWISE SPECIFIED:		APVD S. YODER 04FEB02	NAME			
0 PLC ± - 1 PLC ± - 2 PLC ± .01 3 PLC ± .005 4 PLC ± - ANGLES ± 1/2		PRODUCT SPEC	6STR-XX-008			
MATERIAL		APPLICATION SPEC	SIZE	CAGE CODE	DRAWING NO	RESTRICTED TO
FINISH		WEIGHT	A3	00779	C-7-1437654-2	-
CUSTOMER DRAWING			SCALE	SHEET	REV	
			NTS	1 OF 1	D1	

X-ON Electronics

Largest Supplier of Electrical and Electronic Components

Click to view similar products for [TE Connectivity](#) manufacturer:

Other Similar products are found below :

[D38999/24FJ4AN](#) [570416-000](#) [CLTEQ-M81CE-SSRELAY-4-20V](#) [4-1195131-0](#) [650069-000](#) [SMD100-2](#) [358838-000](#) [CB-1022B-78](#)
[RM707012](#) [RP410012](#) [MMS42](#) [1-640426-8](#) [2EDL4CM](#) [DTS20W19-11PD-3028-LC](#) [RM202615](#) [NC6-P104-06](#) [MSPS103B](#) [DTS26F21-41HE-LC](#) [DTS26F21-41AE](#) [DTS26F21-41PE-LC](#) [DTS26F21-11SE-3028-LC](#) [30DCB6](#) [1932144-1](#) [293545-4](#) [LVR125S](#) [MS27466T25F4PB](#)
[CKB-38-78010](#) [TR04AI-TINELLOCKRING](#) [1206SFF150F/63-2](#) [D38999/20JB35HA](#) [TE1500A2R2J](#) [D38999/20WC8BB](#) [DTS24F19-11SC-3028-LC](#) [D38999/24WG11HA](#) [D38999/24WG11HN](#) [MS27467T21F11H](#) [DJT16E21-11HA](#) [MS27467T21F35J](#) [MS27467T21F11J](#)
[MS27467T21F16H-LC](#) [MS27467T21F35H](#) [MS27467T21F41H-LC](#) [1206SFH150F/24-2](#) [RP330024](#) [DJT16E21-11PA-LC](#) [DJT16E21-11HA-LC](#) [DJT16E21-11AA](#) [MS27467T21B11JA](#) [DJT16E21-11JA](#) [MS27467T21B11JA-LC](#)