

C. Webster 11-30-90
APPROVED/DATE

0
REV

SAFETY ORGANIZATION(S):

THIS FILTER HAS BEEN FORMALLY RECOGNIZED, CERTIFIED OR APPROVED BY THE LISTED AGENCY. THEREFORE, ALL TEST/REQUIREMENTS SPECIFIED IN THE LATEST REVISION OF THE FOLLOWING AGENCY STANDARDS HAVE BEEN MET:

UL RECOGNIZED
CSA CERTIFIED (PENDING)
VDE APPROVED (PENDING)

UL 1283
CSA 22.2, NO. 0, 0.4, 8
VDE 565-3

OPERATING SPECIFICATIONS:

LINE VOLTAGE/CURRENT:
6 AMP., 120/250 VAC
6 AMP./40°C, 250 VAC
50-60Hz

LINE FREQUENCY:

MAX. LEAKAGE CURRENT, EACH
LINE TO GROUND
.50 mA @ 120V 60 Hz
.83 mA @ 250V 50 Hz

OPERATING AMBIENT TEMP. RANGE:

-10°C TO +40°C @ RATED CURRENT, I_r
IN AN AMBIENT, T_a , HIGHER THAN 40°C, THE MAXIMUM OPERATING CURRENT, I_o , IS AS FOLLOWS:

$$I_o = I_r \sqrt{\frac{85 - T_a}{45}}$$

RELIABILITY SPECIFICATIONS:

STORAGE TEMPERATURE:
-40°C TO +85°C

HUMIDITY:
21 DAYS @ 40°C 95% RH

CURRENT OVERLOAD TEST:
6 TIMES RATED CURRENT FOR 8 SECONDS

TEST SPECIFICATIONS:

INDUCTANCE:
.516 mH NOMINAL

CAPACITANCE: (MEASURED @ 1 KHz, 0.25 VAC MAX., 25°C ±1°C)

LINE TO GROUND:
.0055µF ±20%

LINE TO LINE:
1.08µF ±20%

DISCHARGE RESISTOR
330KΩ

LINE/GROUND AND LINE/LINE
6000 MΩ (MIN) AT 100 VDC

INSULATION RESISTANCE
20°C AND 50% RH

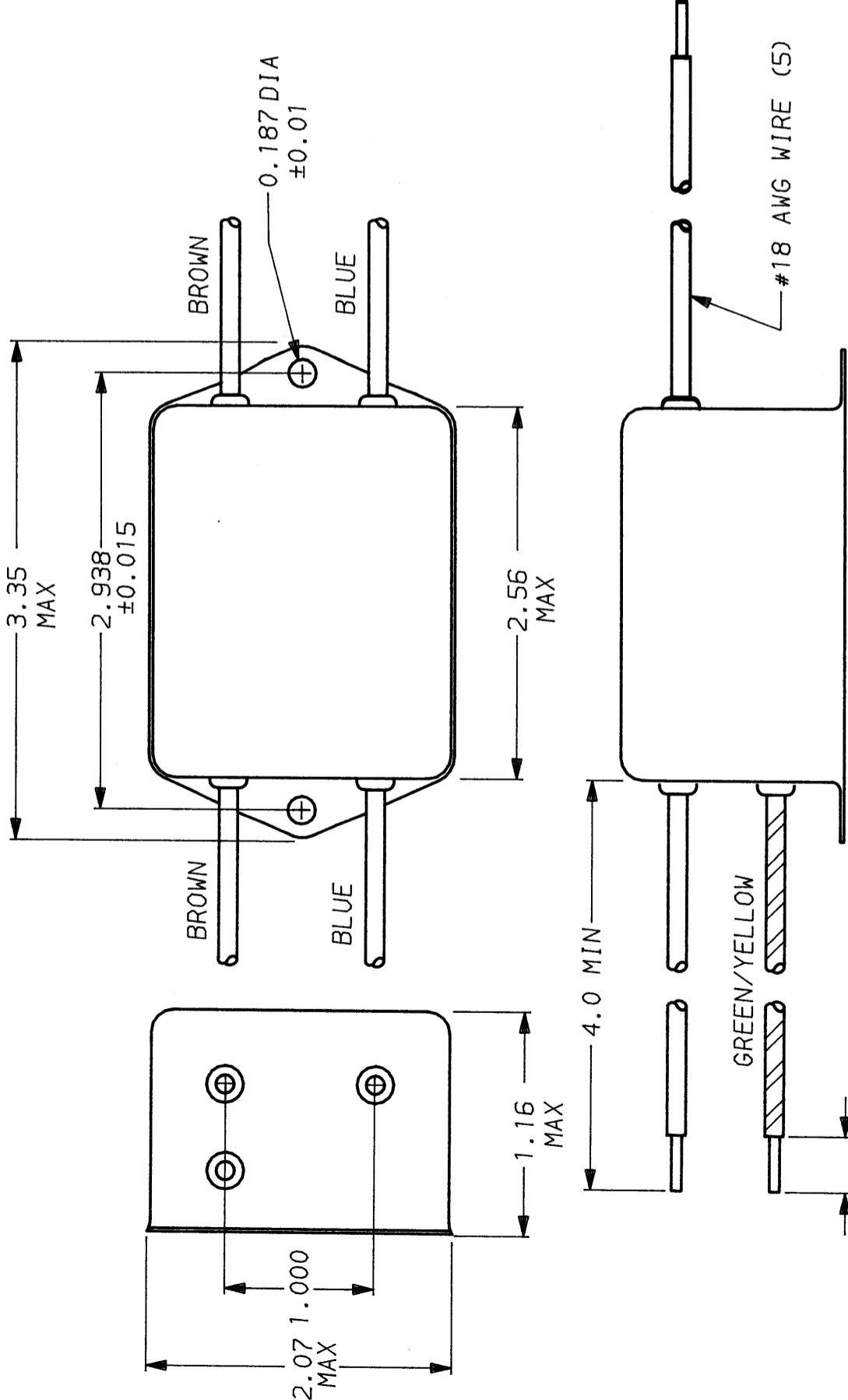
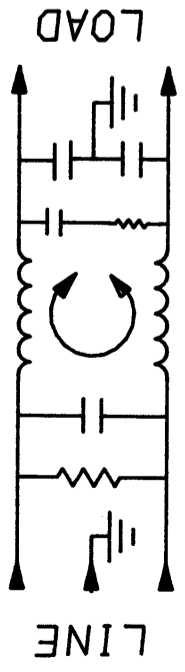
RECOMMENDED RECEIVING INSPECTION HIPOT:

LINES TO GROUND:
2250 VDC FOR 1 MINUTE

LINE TO LINE:
1450 VDC FOR 1 MINUTE

FILTER APPROVAL:

THE BEST WAY TO SELECT AND QUALIFY A FILTER IS FOR YOUR ENGINEERING TO TEST THE UNIT IN YOUR EQUIPMENT.



| FREQUENCY MHz | 50Ω - 50Ω (MINIMUM) INSERTION LOSS | | | | | | | | | |
|------------------|------------------------------------|----|----|----|----|----|----|----|--|--|
| | .15 | .5 | 1 | 2 | 5 | 10 | 20 | 30 | | |
| COMMON dB | 10 | 22 | 31 | 38 | 45 | 50 | 52 | 52 | | |
| DIFF. dB | 20 | 49 | 60 | 60 | 65 | 61 | 61 | 61 | | |

This document is proprietary to CORCOM INC. and is not to be reproduced nor used for manufacturing purposes except on CORCOM's order or prior written consent.

TOLERANCE EXCEPT AS NOTED
DECIMAL: .XXX .XX .X ANGLES ± 1°
ENGLISH: ±.025
METRIC: ±

MATERIAL:
AS SUPPLIED

FINISH:
AS SUPPLIED

SCALE: NTS
DATE: 11-5-90
DRG. NO.: 6VDK3.00
ORIGINATOR: CFW
REV.: CFW

CORCOM
LIBERTYVILLE, IL 60048

POWER LINE FILTER

X-ON Electronics

Largest Supplier of Electrical and Electronic Components

Click to view similar products for [Power Line Filters](#) category:

Click to view products by [TE Connectivity](#) manufacturer:

Other Similar products are found below :

[6609019-3](#) [6609026-5](#) [6609030-6](#) [6609973-2](#) [D30A](#) [7-1609090-5](#) [F2810](#) [F4456A](#) [F7382Z](#) [F7863Z](#) [FAHAV3100ZC000](#) [806276](#) [FN2020B-1-06](#) [FN2080B-10-06](#) [FN2410H-32-33](#) [FN2410H-80-34](#) [FP144](#) [FS4153-20-06](#) [FS4353-500-99](#) [12-MMB-030-11-D](#) [DB4-393](#) [15811T200](#) [20B1](#) [LC630](#) [2B1](#) [1609080-2](#) [1609993-8](#) [1-6609070-1](#) [F1100AA02](#) [F1150CC10](#) [F1500CA10](#) [F1500CA15](#) [F4041Z](#) [F7585E](#) [1B1](#) [FN2070A-16-06](#) [FN2090A-20-06](#) [FN2090B-12-06](#) [FN2090Z-1-06](#) [FN2410H-25-33](#) [FN2410H-60-34](#) [FN2410H-8-44](#) [FN2412H-8-44](#) [FN323B-6-01](#) [FN3258H-130-35](#) [FN610R-3-06](#) [20EHQ7](#) [20EHZ7](#) [20K1](#) [30B6](#)