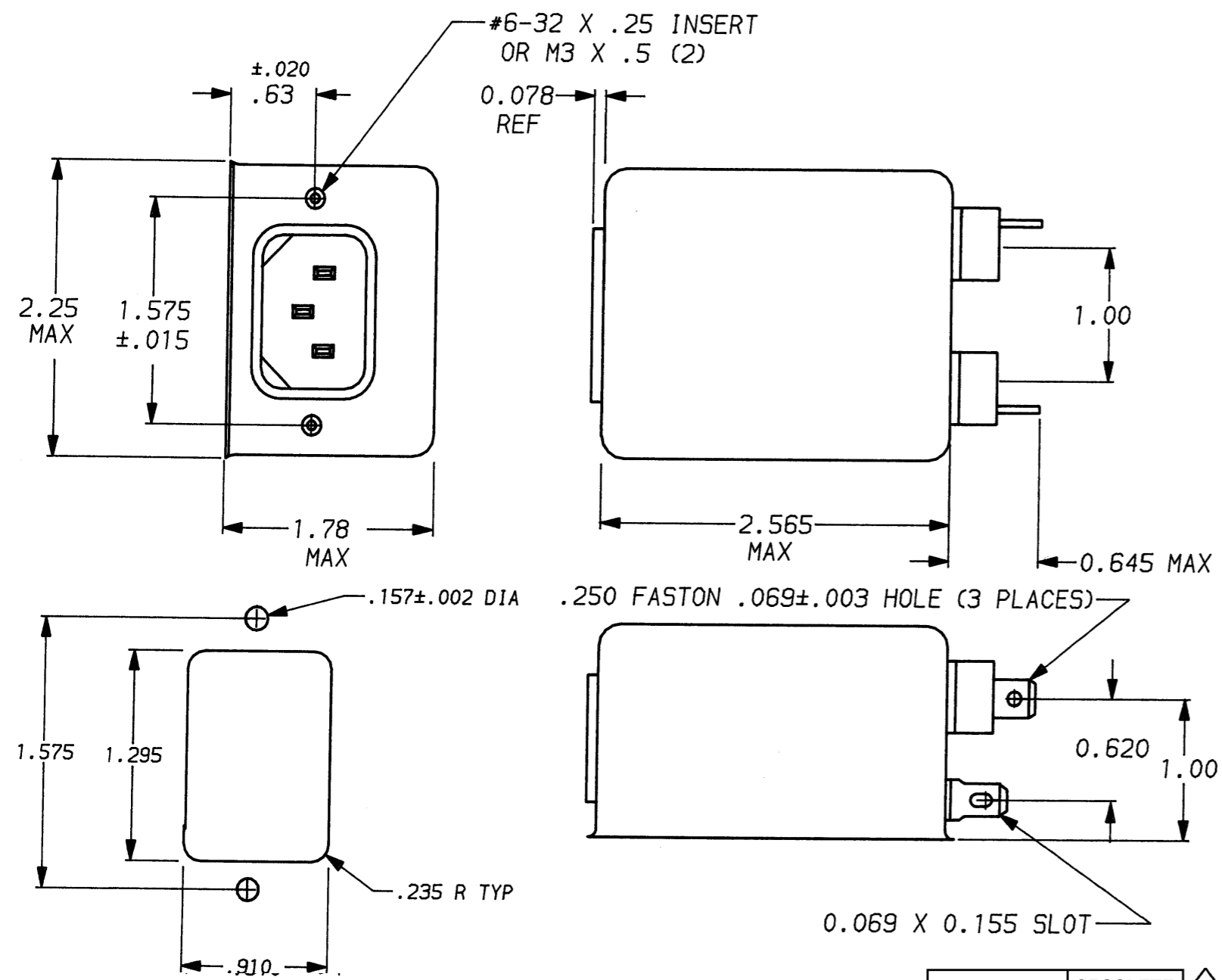


DESCRIPTION	APPROVED BY	DATE	REV
	C. Westoby	5-21-92	6
ECO-09-026495	AEG	11DEC09	7



**SAFETY ORGANIZATION(S):**  
 THIS FILTER HAS BEEN FORMALLY RECOGNIZED, CERTIFIED OR APPROVED BY THE LISTED AGENCY. THEREFORE, ALL TEST/REQUIREMENTS SPECIFIED IN THE LATEST REVISION OF THE FOLLOWING AGENCY STANDARDS HAVE BEEN MET:

UL RECOGNIZED  
 CSA CERTIFIED  
 VDE APPROVED

**OPERATING SPECIFICATIONS:**  
**LINE VOLTAGE/CURRENT:** 6 AMP., 120/250 VAC  
 5 AMP./40°C, 250 VAC

**LINE FREQUENCY:** 50-60Hz

**MAX. CASE RISE @ RATED CURRENT:** 40°C

**MAX. LEAKAGE CURRENT, EACH LINE TO GROUND:** .5 mA at 120V 60 Hz  
 1.0 mA at 250V 50 Hz

**OPERATING AMBIENT TEMP. RANGE:** -10°C TO +40°C @ RATED CURRENT, I<sub>r</sub>

IN AN AMBIENT, T<sub>a</sub>, HIGHER THAN 40°C, THE MAXIMUM OPERATING CURRENT, I<sub>o</sub>, IS AS FOLLOWS:

$$I_o = I_r \sqrt{\frac{85 - T_a}{45}}$$

**RELIABILITY SPECIFICATIONS:**  
**STORAGE TEMPERATURE:** -40°C TO +85°C  
**HUMIDITY:** 21 DAYS @ 40°C 95% RH  
**CURRENT OVERLOAD TEST:** 6 TIMES RATED CURRENT FOR 8 SECONDS

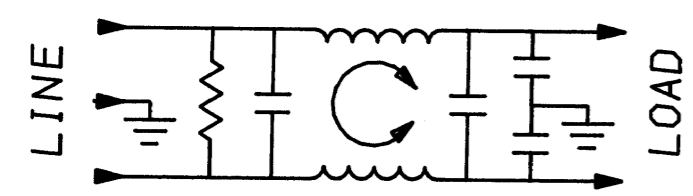
**TEST SPECIFICATIONS:**  
**INDUCTANCE:** 7.8 mH NOMINAL  
**CAPACITANCE: (MEASURED @ 1 KHz, 0.25 VAC MAX., 25°C ±1°C)**  
 LINE TO GROUND: .011µF ±20%  
 LINE TO LINE: .54µF ±20%  
**DISCHARGE RESISTOR:** 330 KΩ  
**LINE/GROUND AND LINE/LINE INSULATION RESISTANCE:** 6000 MΩ (MIN) AT 100 VDC  
 20°C AND 50% RH

**RECOMMENDED RECEIVING INSPECTION HIPOT:**  
**LINES TO GROUND:** 2250 VDC FOR 1 MINUTE  
**LINE TO LINE:** 1450 VDC FOR 1 MINUTE

**FILTER APPROVAL:**  
 THE BEST WAY TO SELECT AND QUALIFY A FILTER IS FOR YOUR ENGINEERING TO TEST THE UNIT IN YOUR EQUIPMENT.

<del>1609036-8</del>	OBSOLETE	1
6609036-8		
1609036-7		
6609036-7		

PANEL CUTOUT TOLERANCE ±.005



**1** OBSOLETE PARTS: OBSOLETE CIS STREAMLINING PER D.RENAUD/D.SINISI

50Ω - 50Ω (MINIMUM) INSERTION LOSS											
FREQUENCY MHz	.01	.02	.05	.08	.1	.15	.5	1	5	10	30
COMMON dB	7	14	22	26	27	33	45	48	48	48	30
DIFF. dB	1	1	2	3	10	25	59	65	62	40	40

This document is proprietary to CORCOM INC. and is not to be reproduced nor used for manufacturing purposes except on CORCOM's order or prior written consent.

TOLERANCE EXCEPT AS NOTED  
 DECIMAL: .XXX .XX .X ANGLES ± 1°  
 ENGLISH: ±.025  
 METRIC: ± —  
 MATERIAL: AS SUPPLIED  
 FINISH: AS SUPPLIED

**22** **corcom**  
 LIBERTYVILLE, IL 60048

**POWER LINE FILTER**

SCALE: NTS	DATE: 8-7-90	DRG. NO.:	REV.:
DRW. BY: CFW	ORIGINATOR: CFW	6VSK7 & 6VSK7M	7

## X-ON Electronics

Largest Supplier of Electrical and Electronic Components

*Click to view similar products for [Power Line Filters](#) category:*

*Click to view products by [TE Connectivity](#) manufacturer:*

Other Similar products are found below :

[6609019-3](#) [6609026-5](#) [6609030-6](#) [6609973-2](#) [D30A](#) [7-1609090-5](#) [F2810](#) [F4456A](#) [F7382Z](#) [F7863Z](#) [FAHAV3100ZC000](#) [806276](#) [FN2020B-1-06](#) [FN2080B-10-06](#) [FN2410H-32-33](#) [FN2410H-80-34](#) [FP144](#) [FS4153-20-06](#) [FS4353-500-99](#) [12-MMB-030-11-D](#) [DB4-393](#) [15811T200](#) [20B1](#) [LC630](#) [2B1](#) [1609080-2](#) [1609993-8](#) [1-6609070-1](#) [F1100AA02](#) [F1150CC10](#) [F1500CA10](#) [F1500CA15](#) [F4041Z](#) [F7585E](#) [1B1](#) [FN2070A-16-06](#) [FN2090A-20-06](#) [FN2090B-12-06](#) [FN2090Z-1-06](#) [FN2410H-25-33](#) [FN2410H-60-34](#) [FN2410H-8-44](#) [FN2412H-8-44](#) [FN323B-6-01](#) [FN610R-3-06](#) [20EHQ7](#) [20EHZ7](#) [20K1](#) [30B6](#) [3K1](#)