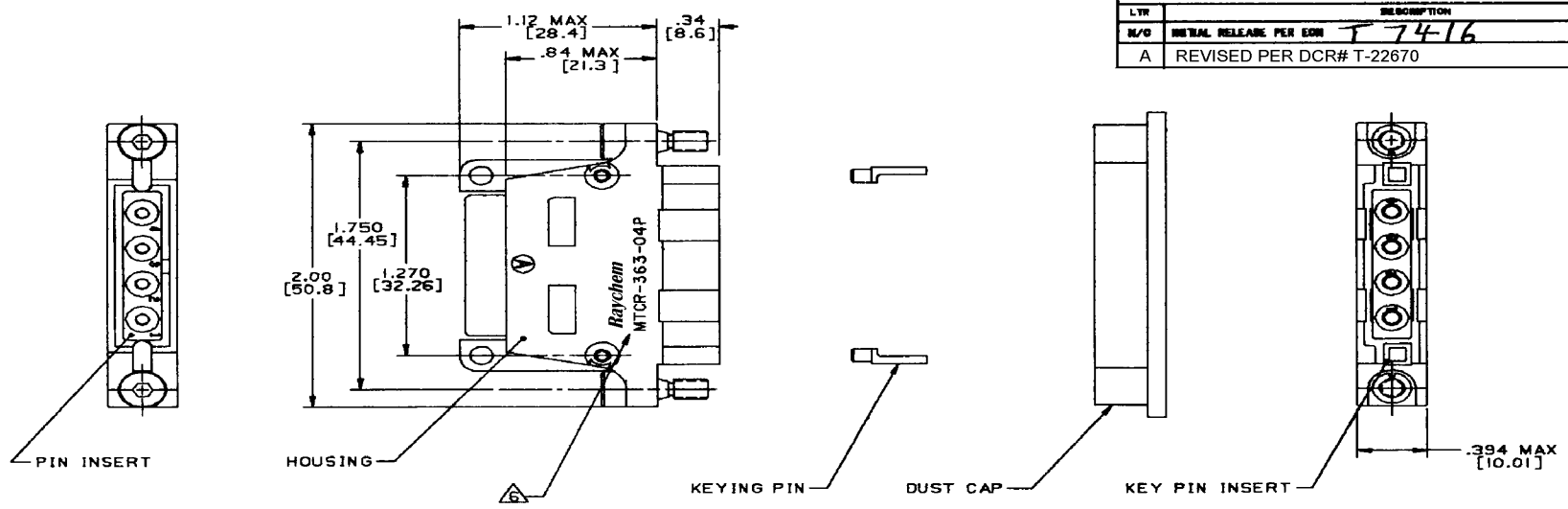


REVISIONS			
LTR	DESCRIPTION	DATE	APPROVED
N/C	INITIAL RELEASE PER EOM T-7416	12/3/86	JS
A	REVISED PER DCR# T-22670	3/9/99	M.HIGGY



NOTES:

1. THIS PART IS DESIGNED TO MEET THE REQUIREMENTS OF RAYCHEM SPECIFICATION C-6115. QUALIFICATION IS PENDING.
2. MATERIAL: MATERIALS ARE IN ACCORDANCE WITH RAYCHEM SPECIFICATION C-6115.
3. FINISH: FINISHES ARE IN ACCORDANCE WITH RAYCHEM SPECIFICATION C-6115.
4. FOR MOUNTING / MATING AND KEYING INFORMATION, SEE RAYCHEM DRAWING D652-0012
5. DUST CAP SUPPLIED INSTALLED WITH EACH RECEPTACLE
6. RAYCHEM, PART NO. MTCR-363-04P, AND DATE CODE ARE STAMPED APPROXIMATELY AS SHOWN.
7. CONNECTOR ACCOMODATES CONTACTS PER TABLE I.
8. INSERT IS PERMANENTLY INSTALLED.
9. CONTACTS ARE INSERTED AND REMOVED USING TOOL NUMBER M81969/14-04.
10. UNUSED CAVITIES ARE TO BE SEALED USING SEALING PLUG NUMBER M527488-12.
11. TOLERANCES: UNLESS OTHERWISE SPECIFIED
 .XXX ± .005 [± 13]
 .XX ± .02 [± 5]

12. WEIGHT: .053 lbs [24.08g]

PIN CONTACT AND TOOLING INFORMATION

CONTACT TYPE	MILITARY PART NO.	WIRE STRIP LENGTH	TERMINATION TOOL
SHIELDED CONTACT FOR COAX CABLE D-602-0106 OR D-602-0094		SEE DRAWING D-602-0106 OR D-602-0094	SEE DRAWING D-602-0106 OR D-602-0094
CONTACT FOR TWISTED PAIR D-602-0104		SEE DRAWING D-602-0104	SEE DRAWING D-602-0104
POWER CONTACT SIZE 12	M39029/5-12-12	1/4" TO 5/16"	M22520/1-01 POSITIONER M22520/1-02

SPECIFICATION CONTROL DRAWING

<table border="1"> <tr> <td>DRAWN</td> <td>D.J.K.</td> <td>11-24-86</td> </tr> <tr> <td>CHECKED</td> <td>SB</td> <td></td> </tr> <tr> <td>APPROVED</td> <td><i>[Signature]</i></td> <td>11-25-86</td> </tr> <tr> <td>APPROVED</td> <td><i>[Signature]</i></td> <td>12-4-86</td> </tr> </table>	DRAWN	D.J.K.	11-24-86	CHECKED	SB		APPROVED	<i>[Signature]</i>	11-25-86	APPROVED	<i>[Signature]</i>	12-4-86	<p>Raychem</p> <p>RAYCHEM CORPORATION 800 CONSTITUTION DRIVE MENLO PARK, CALIFORNIA 94025</p> <p>CONNECTOR, PLUG, 1" CADMIUM PLATED, FIXED PIN INSERT EME CLASS, MTC SERIES</p>
DRAWN	D.J.K.	11-24-86											
CHECKED	SB												
APPROVED	<i>[Signature]</i>	11-25-86											
APPROVED	<i>[Signature]</i>	12-4-86											
<table border="1"> <tr> <td>SIZE</td> <td>CODE IDENT. NO.</td> <td>DWG NO.</td> </tr> <tr> <td>C</td> <td>06090</td> <td>MTCR-363-04P A</td> </tr> </table>	SIZE	CODE IDENT. NO.	DWG NO.	C	06090	MTCR-363-04P A	<table border="1"> <tr> <td>WEIGHT</td> <td>SHEET</td> </tr> <tr> <td></td> <td>1 OF 1</td> </tr> </table>	WEIGHT	SHEET		1 OF 1		
SIZE	CODE IDENT. NO.	DWG NO.											
C	06090	MTCR-363-04P A											
WEIGHT	SHEET												
	1 OF 1												

4

3

2

1

X-ON Electronics

Largest Supplier of Electrical and Electronic Components

Click to view similar products for [Rack & Panel Connectors](#) category:

Click to view products by [TE Connectivity](#) manufacturer:

Other Similar products are found below :

[00170420102](#) [00171410002](#) [00171420202](#) [00171440002](#) [008026165000265](#) [00-8219-072-000-112P44](#) [008219072000112P5](#)
[008219072000112P61](#) [00-8223-096-580-102](#) [02-014-013-5200-000](#) [00-8129-015-610-108](#) [613467-000](#) [CTJ112E01E-513](#) [CTJ116E03A-513](#)
[CTJ720E01B-513 L/C](#) [M81714/63-22S L/C](#) [M81714/65-12-1](#) [66020-2](#) [CW8958-000](#) [699886-000](#) [D250-50632](#) [70.400.3240.0](#) [70.955.2453.3](#)
[733753-000](#) [F22831-000](#) [780-522-DPX34RG8-02](#) [MMA25-0051R1](#) [MMA25-0341D1](#) [8660-501](#) [87.060.0053.0](#) [900709N001](#) [QRP4-12P-](#)
[C\(01\)](#) [QR/P6-6S-C\(01\)](#) [AC-600003-004](#) [1218600-1](#) [D-659-0061](#) [DMC-MD 24 C-T](#) [1-445717-6](#) [1484398-2](#) [1484399-2](#) [1484469-2](#) [MR-](#)
[34MG](#) [1484225-1](#) [1484398-1](#) [1484510-4](#) [1604997-2](#) [1663130-1](#) [1663767-7](#) [1663767-8](#) [MTC100-BF1-P31CS015](#)