

| PART NUMBER | REVISION | DESCRIPTION                      | FEED TYPE  |
|-------------|----------|----------------------------------|------------|
| 2151198-1   | B        | FINE CRIMP HEIGHT ADJUST         | MECHANICAL |
| 2151198-2   | B        | FINE CRIMP HEIGHT ADJUST         | PNEUMATIC  |
| 7-2151198-1 | B        | MECHANICAL AND CRIMP TOOLING KIT | MECHANICAL |
| 7-2151198-2 | B        | PNEUMATIC AND CRIMP TOOLING KIT  | PNEUMATIC  |
| 7-2151198-7 | A        | CRIMP TOOLING KIT                | -          |

ATLANTIC VERSION TERMINATOR INTERFACE ADAPTER



| APPLICATOR DATA |                |      |
|-----------------|----------------|------|
| CRIMP           | SIZE           | TYPE |
| WIRE            | 1.78 mm [.070] | F    |
| INSUL           | 1.78 mm [.070] | F    |

APPLICATOR INSTRUCTIONS  
408-35042

| TERMINAL DATA: TE TERMINAL                   |             | TE CRIMP SPECIFICATION       |             |
|--|-------------|------------------------------|-------------|
| TERMINAL NAME: SQUIB CONT 1MM PIN DIA SOCKET |             |                              |             |
| WIRE STRIP LENGTH                            |             | INSULATION DIAMETER RANGE    |             |
| 4.00-4.50 mm [.157-.177 IN]                  |             | Ø1.40-1.70 mm [.055-.067 IN] |             |
| TERMINAL APPLICATION SPECIFICATION           | 114-5234    |                              |             |
| TERMINALS APPLIED                            |             |                              |             |
| TE TERMINAL                                  | TE TERMINAL | TE TERMINAL                  | TE TERMINAL |
| 353376-3                                     | 353376-5    | 353376-6                     | 1-353376-1  |
| 1-353376-2                                   |             |                              |             |

| WIRE SIZE                     | CRIMP HEIGHT mm [INCH]     | CRIMP HEIGHT REFERENCE SETTING |
|-------------------------------|----------------------------|--------------------------------|
| 20 AWG OR 0.50mm <sup>2</sup> | 1.03+/-0.05 [.041+/- .002] | 7.2                            |
| 22 AWG OR 0.30mm <sup>2</sup> | 0.94+/-0.05 [.037+/- .002] | 8.2                            |

- 1 RECOMMENDED SPARE PARTS
- 2 REFER TO SUPPLIED INSTRUCTION SHEET FOR CLEANING, LUBRICATION AND STORAGE OF APPLICATOR.
- 3 APPLY PART NUMBER 2-23419-6 LOCTITE TO THREADS OF ITEM 242.
- 4 CRIMP HEIGHT REFERENCE SETTING WAS THE SETTING USED WHEN THE APPLICATOR WAS QUALIFIED AT THE FACTORY. ADJUSTMENT MAY BE NECESSARY WHEN RUNNING APPLICATOR IN THE FIELD.
- 5. UNLESS SPECIFIED OTHERWISE TORQUE VALUES SHALL BE USED PER DOCUMENT, 101-35000.

**\*WARNING**  
ON INSTALLATION, SET WIRE DISC TO CRIMP HEIGHT REFERENCE SETTING FOR LARGEST WIRE SIZE. CRIMP HEIGHT REFERENCE SETTINGS GREATER THAN THE VALUE SHOWN MAY CAUSE DAMAGE TO THE CRIMP TOOLING. REFER TO THE INSTRUCTION SHEET FOR PROPER SETUP AND ADJUSTMENTS.

ATLANTIC VERSION  
Shown on sheets 1 of 4 & 2 of 4  
(Pacific version shown on sheets 3 of 4 & 4 of 4)

| LOC | DIST | REVISIONS |     |               |           |     |      |
|-----|------|-----------|-----|---------------|-----------|-----|------|
|     |      | P         | LTN | DESCRIPTION   | DATE      | OWN | APVD |
| A   | 66   |           |     | REVISED       | 12DEC2014 | RK  | GB   |
|     |      |           |     | ECR-21-003775 | 28MAR2021 | TB  | RR   |

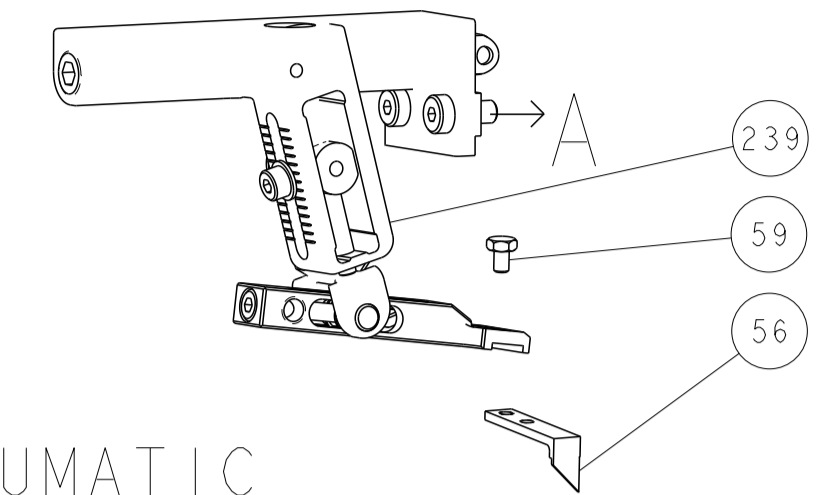
|   |     |     |     |     |             |                                     |         |
|---|-----|-----|-----|-----|-------------|-------------------------------------|---------|
| - | 1   | -   | 1   | -   | 2119641-1   | FEED CAM, AIR FEED                  | 248     |
| - | 1   | 1   | 1   | 1   | 2119082-4   | CAM, SNAIL, INSULATION ADJUSTMENT   | 244     |
| - | 1   | 1   | 1   | 1   | 2079764-1   | WASHER, WAVE SPRING, CREST-TO-CREST | 243     |
| - | 1   | 1   | 1   | 1   | 2119083-1   | RETAINER, INSULATION DIAL           | 242     |
| - | 1   | 1   | 1   | 1   | 7-18023-7   | SCR, SKT HD CAP M3 X 4.0            | 241     |
| - | -   | 1   | -   | 1   | 2119580-1   | MECHANICAL FEED ASSEMBLY            | 239     |
| - | 1   | -   | 1   | -   | 2844940-1   | AIR FEED MODULE                     | 238     |
| - | REF | REF | REF | REF | 994970-2    | COUNTER, MAGNETIC                   | 164     |
| - | 1   | 1   | 1   | 1   | 2844908-1   | SCREW, LOCKING                      | 99      |
| - | 1   | 1   | 1   | 1   | 2844907-1   | POST, LOCKING                       | 98      |
| - | 1   | 1   | 1   | 1   | 455888-6    | SPACER, CRIMPER                     | 82      |
| - | 1   | 1   | 1   | 1   | 1803607-3   | DOCUMENTATION PACKAGE               | 71      |
| - | 1   | 1   | 1   | 1   | 2119791-5   | DEPRESSOR, WIRE                     | 70      |
| - | 1   | 1   | 1   | 1   | 2119740-1   | TAG IDENTIFICATION                  | 67      |
| - | 2   | 2   | 2   | 2   | 2168078-1   | SCREW, DRIVE, RH, RoHS, 2 x .188    | 66      |
| - | 1   | 1   | 1   | 1   | 2168083-2   | SCR, SKT HD CAP, RoHS, M4 X 8.0     | 60      |
| - | 1   | 1   | 1   | 1   | 5-18022-5   | SCR, HEX HD CAP, M4 X 6.0           | 59      |
| - | 1   | 1   | 1   | 1   | 1338685-1   | PAWL, FEED                          | 56      |
| - | 4   | 4   | 4   | 4   | 2168083-3   | SCR, SKT HD CAP, RoHS, M4 X 12.0    | 54      |
| - | 2   | 2   | 2   | 2   | 1-2168083-0 | SCR, SKT HD CAP, RoHS, M4 X 10      | 53      |
| - | 1   | 1   | 1   | 1   | 5018030-1   | NUT, HEX, REG, RoHS, M3             | 52      |
| - | 1   | 1   | 1   | 1   | 811242-5    | BUMPER, HOLD DOWN                   | 51      |
| - | 1   | 1   | 1   | 1   | 690753-2    | SPACER, TONKER                      | 50      |
| - | 1   | 2   | 1   | 2   | 18023-9     | SCR, SKT HD CAP M4 X 6.0            | 49      |
| - | -   | 1   | -   | 1   | 2119652-1   | FEED CAM, PRE FEED                  | 48      |
| - | -   | 1   | -   | 1   | 2119653-1   | FEED CAM, POST FEED                 | 47      |
| - | 1   | 1   | 1   | 1   | 1803583-9   | APPLICATOR BASIC ASSEMBLY, SF       | 46      |
| - | 1   | 1   | 1   | 1   | 1803515-1   | RAM ASSEMBLY, SF ATLANTIC           | 44      |
| - | 1   | 1   | 1   | 1   | 1803602-1   | SCR, BHSC, RoHS (M8 X 25)           | 41      |
| - | 1   | 1   | 1   | 1   | 5-1752356-5 | SUPPORT, TERMINAL                   | 34      |
| - | 2   | 2   | 2   | 2   | 2079383-5   | SCR, BHSC, RoHS (M4 X 20)           | 33      |
| - | 2   | 2   | 2   | 2   | 2-2844962-6 | SPACER, CYLINDRICAL, STRIP GUIDE    | 30      |
| - | 1   | 1   | 1   | 1   | 2844992-1   | ASSEMBLY, STRIP GUIDE               | 29      |
| - | 1   | 1   | 1   | 1   | 455888-4    | SPACER, CRIMPER                     | 28      |
| - | 1   | 1   | 1   | 1   | 1320928-2   | STRIP GUIDE                         | 24      |
| - | 1   | 1   | 1   | 1   | 2168083-2   | SCR, SKT HD CAP, RoHS, M4 X 8.0     | 21      |
| - | 1   | 1   | 1   | 1   | 1-18028-2   | WASHER, FLAT, REG M4                | 20      |
| - | 1   | 1   | 1   | 1   | 2119533-1   | STRIPPER, SIDE FEED                 | 19      |
| - | 1   | 1   | 1   | 1   | 2119806-1   | INSERT, SHEAR                       | 13      |
| - | 1   | 1   | 1   | 1   | 3-22280-3   | SPRING, COMPRESSION                 | 12      |
| - | 1   | 1   | 1   | 1   | 1-356885-4  | STOP, SHEAR                         | 11      |
| - | 1   | 1   | 1   | 1   | 2119805-1   | SHEAR HOLDER, FRONT                 | 10      |
| - | 1   | 1   | 1   | 1   | 1803095-6   | FLOATING SHEAR, FRONT               | 9       |
| - | 1   | 2   | 2   | 1   | 1333203-7   | ANVIL, COMBINATION                  | 8       |
| - | 1   | 1   | 1   | 1   | 2119757-8   | DEPRESSOR, SHEAR                    | 5       |
| - | 1   | 1   | 1   | 1   | 5-238011-5  | BLOCK, CRIMPER SPACER               | 4       |
| - | 1   | 2   | 2   | 1   | 1-1633961-3 | CRIMPER, INSULATION F PREMIUM       | 3       |
| - | 1   | 2   | 2   | 1   | 1-456404-8  | CRIMPER, WIRE PREMIUM               | 1       |
| - | 77  | -72 | -71 | -2  | -1          | PART NO                             | ITEM NO |

| DIMENSIONS: |         | TOLERANCES UNLESS OTHERWISE SPECIFIED: |         | MATERIAL: |         | FINISH: |        |
|-------------|---------|--|---------|-----------|---------|---------|--------|
| mm          | 0 PLC ± | 1 PLC ±                                | 2 PLC ± | 3 PLC ±   | 4 PLC ± | ANGLES  | FINISH |
|             |         |  |         |           |         |         |        |

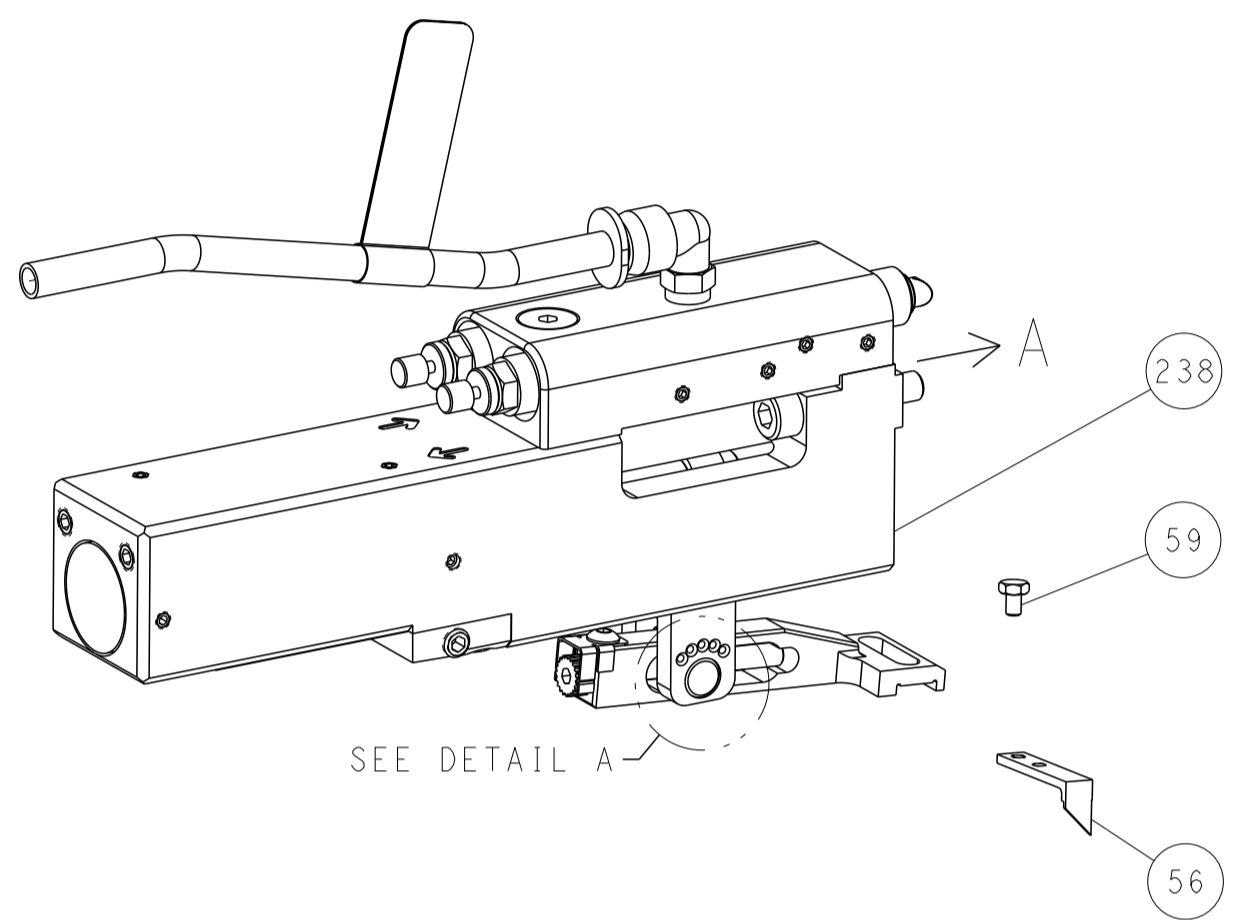
|  |          |           |            |                            |
|--|----------|-----------|------------|----------------------------|
| OWN                                    | H. HUANG | 16AUG2011 | NAME       | Ocean Side Feed Applicator |
| CHK                                    |          |           | SIZE       | A1                         |
| APVD                                   | S. XI    | 16AUG2011 | CAGE CODE  | 00779                      |
| PRODUCT SPEC                           |          |           | DRAWING NO | 2151198                    |
| APPLICATION SPEC                       |          |           | SCALE      | 1:2                        |
| RESTRICTED TO                          |          |           | SHEET      | 1 OF 4                     |
| Customer Accessible Production Drawing |          |           | REV        | B                          |

| LOC | DIST | REVISIONS |     |             |      |     |      |
|-----|------|-----------|-----|-------------|------|-----|------|
| A   | 66   | P         | LYN | DESCRIPTION | DATE | OWN | APVD |
|     |      | -         |     | SEE SHEET 1 |      |     |      |

# FEED TYPE MECHANICAL



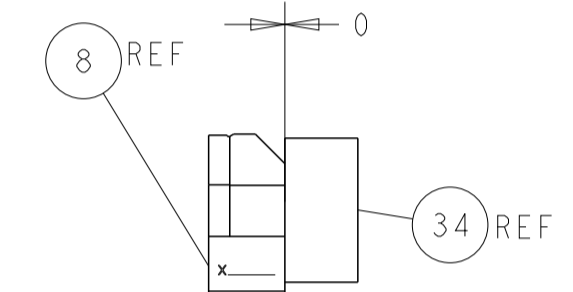
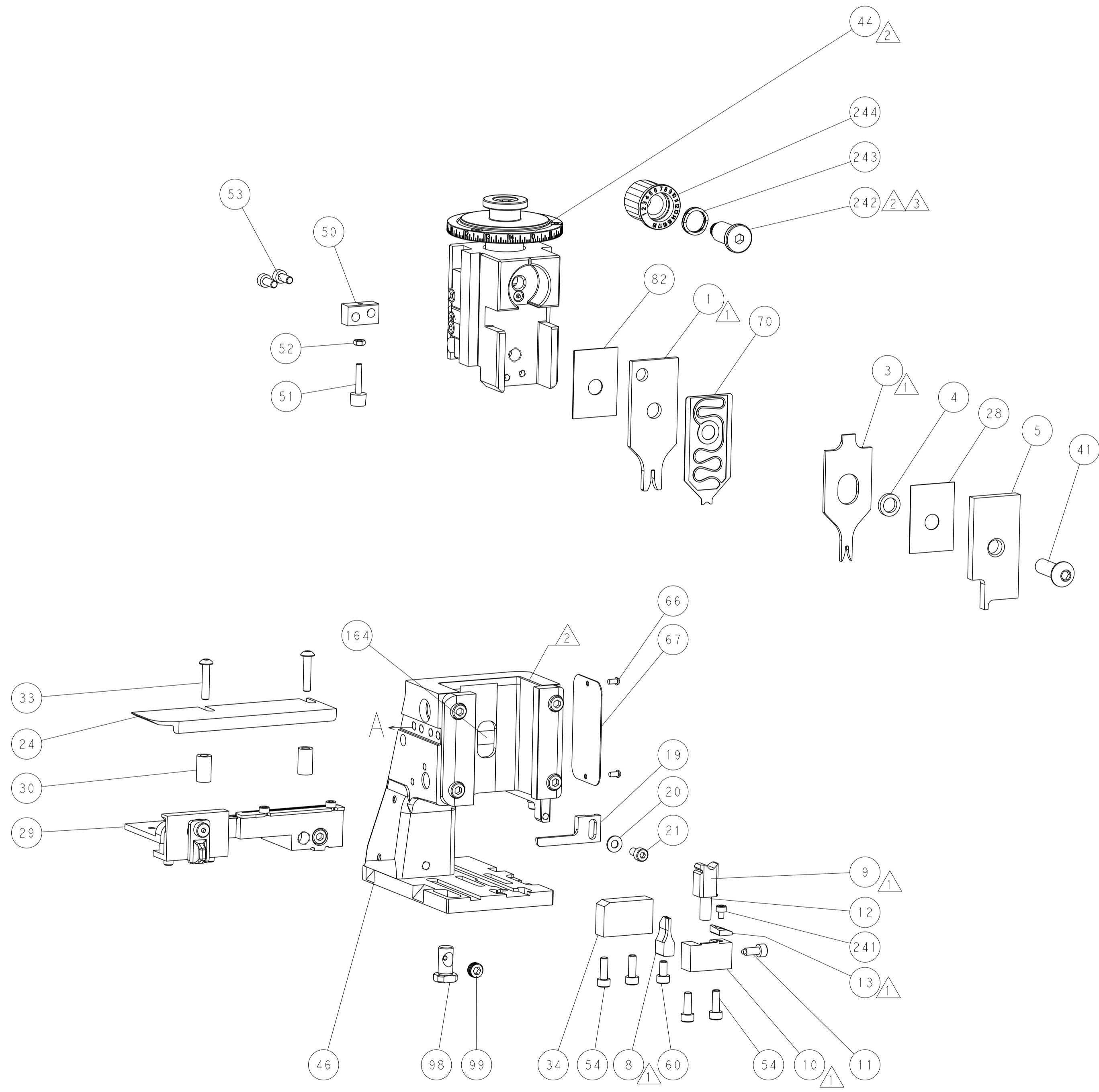
## PNEUMATIC



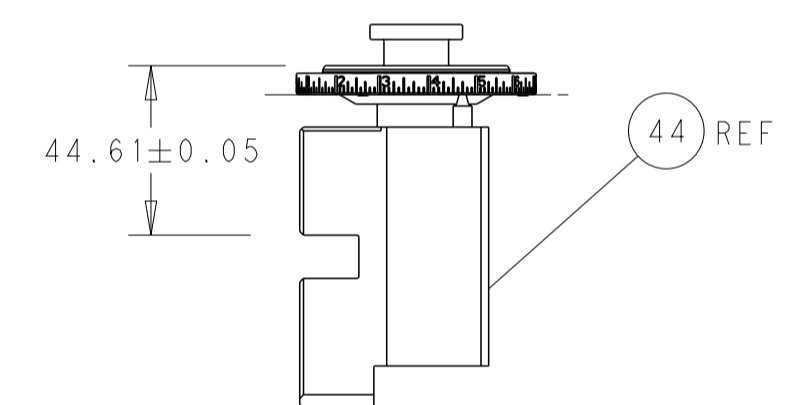
### FEED SPRING SETTING POSITION (SHOWN FROM REAR SIDE)



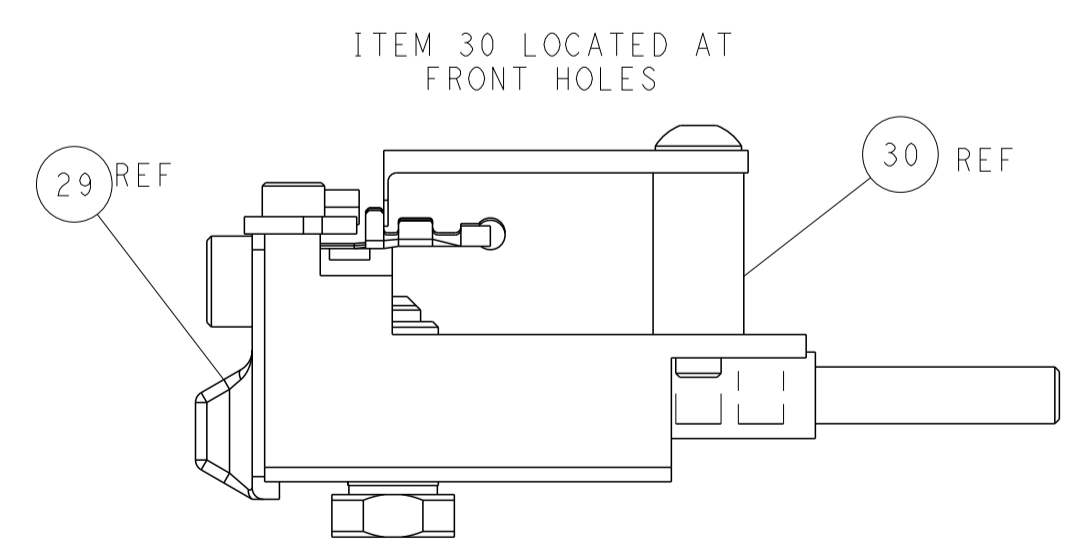
DETAIL A



TERMINAL SUPPORT LOCATION

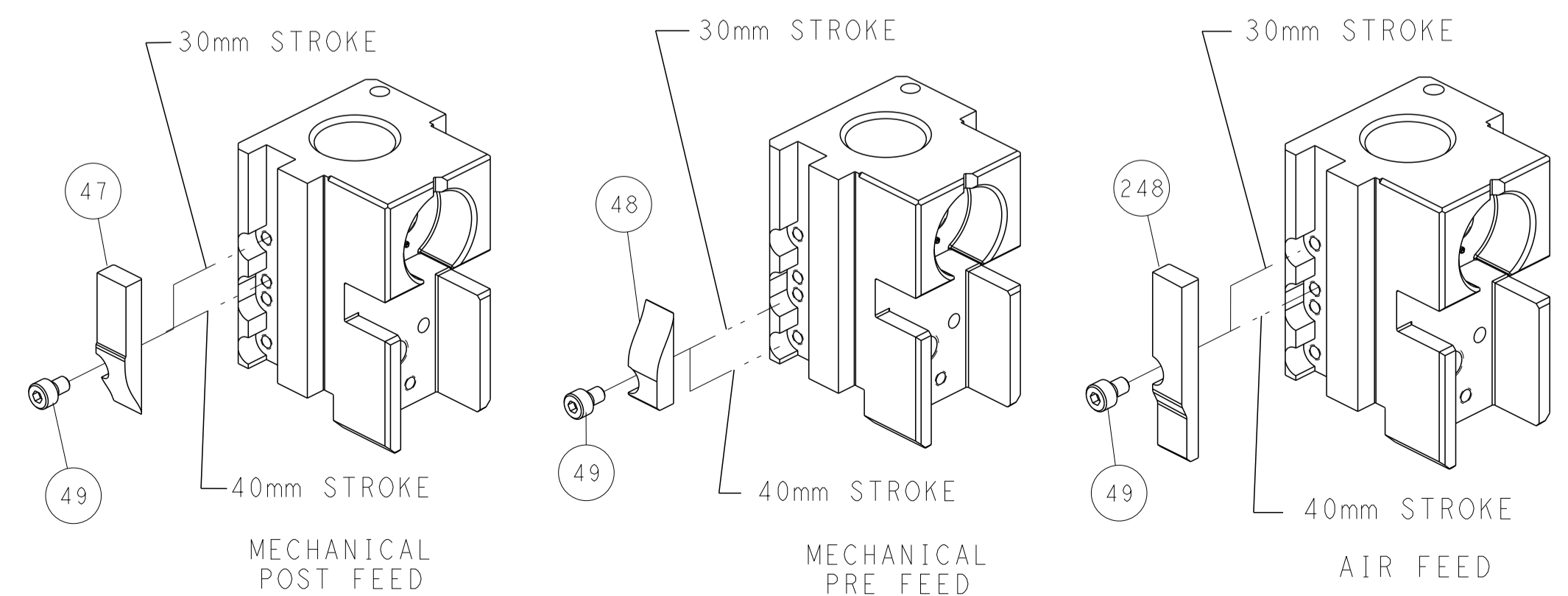


RAM SET-UP



FEED TRACK POSITION GUIDE BY INSULATION BARREL

## CAM POSITIONS



**ATLANTIC VERSION**  
 Shown on sheets 1 of 4 & 2 of 4  
 (Pacific version shown on sheets 3 of 4 & 4 of 4)

|  |  |   |   |                    |
|--|--|---|---|--------------------|
| <small>THIS DRAWING IS UNPUBLISHED. RELEASED FOR PUBLICATION. ALL RIGHTS RESERVED. © 2000 BY TYCO ELECTRONICS CORPORATION. THIS IS THE PROPERTY OF COMPANY AND CONTROLLED BY THE COMPANY. IT IS TO BE KEPT IN CONFIDENCE AND NOT TO BE REPRODUCED OR TRANSMITTED IN ANY FORM OR BY ANY MEANS, ELECTRONIC OR MECHANICAL, INCLUDING PHOTOCOPYING, RECORDING, OR BY ANY INFORMATION STORAGE AND RETRIEVAL SYSTEM. WITHOUT THE WRITTEN PERMISSION OF TYCO ELECTRONICS CORPORATION.</small> |  | DWN<br>R. HUANG<br>16AUG2011<br>CHK<br>S. XI<br>16AUG2011<br>APVD<br>S. XI<br>16AUG2011<br>PRODUCT SPEC<br>APPLICATION SPEC<br>WEIGHT<br>Customer Accessible Production Drawing | NAME<br>Ocean Side Feed<br>Applicator<br>SIZE<br>A1<br>CAGE CODE<br>00779<br>DRAWING NO<br>C=2151198<br>SCALE<br>1:2<br>SHEET<br>2 of 4<br>REV<br>B | RESTRICTED TO<br>- |
|--|--|---|---|--------------------|

| PART NUMBER | REVISION | DESCRIPTION              | FEED TYPE  |
|-------------|----------|--------------------------|------------|
| 2-2151198-1 | B        | FINE CRIMP HEIGHT ADJUST | MECHANICAL |
| 2-2151198-2 | B        | FINE CRIMP HEIGHT ADJUST | PNEUMATIC  |
| 7-2151198-7 | A        | CRIMP TOOLING KIT        | -          |

PACIFIC VERSION TERMINATOR  
INTERFACE ADAPTER



| APPLICATOR DATA |                |      |
|-----------------|----------------|------|
| CRIMP           | SIZE           | TYPE |
| WIRE            | 1.78 mm [.070] | F    |
| INSUL           | 1.78 mm [.070] | F    |

APPLICATOR INSTRUCTIONS  
408-35042

| TERMINAL DATA: TE TERMINAL                   |             | TE CRIMP SPECIFICATION       |             |
|--|-------------|------------------------------|-------------|
| TERMINAL NAME: SQUIB CONT 1MM PIN DIA SOCKET |             |                              |             |
| WIRE STRIP LENGTH                            |             | INSULATION DIAMETER RANGE    |             |
| 4.00-4.50 mm [.157-.177 IN]                  |             | Ø1.40-1.70 mm [.055-.067 IN] |             |
| TERMINAL APPLICATION SPECIFICATION           | 114-5234    | -                            | -           |
| TERMINALS APPLIED                            |             |                              |             |
| TE TERMINAL                                  | TE TERMINAL | TE TERMINAL                  | TE TERMINAL |
| 353376-3                                     | 353376-5    | 353376-6                     | 1-353376-1  |
| 1-353376-2                                   |             |                              |             |

| WIRE SIZE                     | CRIMP HEIGHT mm [INCH]     | CRIMP HEIGHT REFERENCE SETTING |
|-------------------------------|----------------------------|--------------------------------|
| 20 AWG OR 0.50mm <sup>2</sup> | 1.03+/-0.05 [.041+/-0.002] | 7.2                            |
| 22 AWG OR 0.30mm <sup>2</sup> | 0.94+/-0.05 [.037+/-0.002] | 8.2                            |

- RECOMMENDED SPARE PARTS
- REFER TO SUPPLIED INSTRUCTION SHEET FOR CLEANING, LUBRICATION AND STORAGE OF APPLICATOR.
- APPLY PART NUMBER 2-23419-6 LOCTITE TO THREADS OF ITEM 242.
- CRIMP HEIGHT REFERENCE SETTING WAS THE SETTING USED WHEN THE APPLICATOR WAS QUALIFIED AT THE FACTORY. ADJUSTMENT MAY BE NECESSARY WHEN RUNNING APPLICATOR IN THE FIELD.
- 5. UNLESS SPECIFIED OTHERWISE TORQUE VALUES SHALL BE USED PER DOCUMENT, 101-35000.

**\*WARNING**  
ON INSTALLATION, SET WIRE DISC TO CRIMP HEIGHT REFERENCE SETTING FOR LARGEST WIRE SIZE. CRIMP HEIGHT REFERENCE SETTINGS GREATER THAN THE VALUE SHOWN MAY CAUSE DAMAGE TO THE CRIMP TOOLING. REFER TO THE INSTRUCTION SHEET FOR PROPER SETUP AND ADJUSTMENTS.

PACIFIC VERSION  
Shown on sheets 3 of 4 & 4 of 4  
(Atlantic version shown on sheets 1 of 4 & 2 of 4)

| LOC | DIST | REV | DATE | BY | CHKD | APVD |
|-----|------|-----|------|----|------|------|
| A   | 66   | -   | -    | -  | -    | -    |

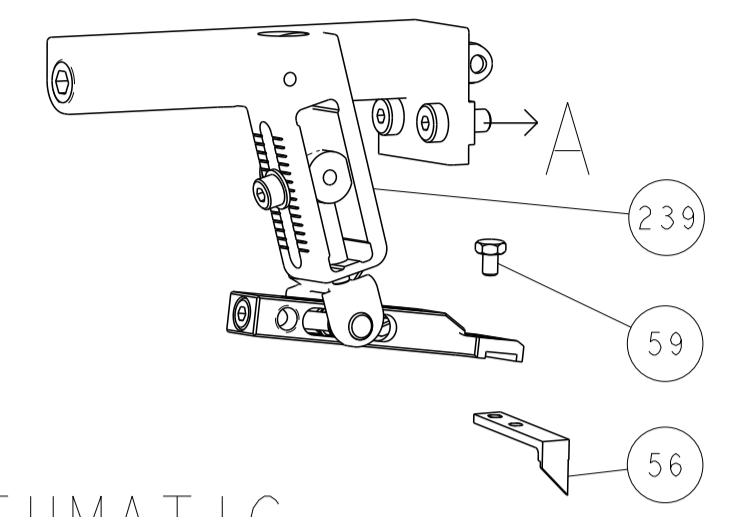
| REVISIONS |      |     |      |      |   |         |
|-----------|------|-----|------|------|---|---------|
| REV       | DATE | BY  | CHKD | APVD | DESCRIPTION                                   | ITEM NO |
| -         | -    | -   | -    | -    | SEE SHEET 1                                   | -       |
| -         | 1    | 1   |      |      | 2119082-4 CAM, SNAIL, INSULATION ADJUSTMENT   | 244     |
| -         | 1    | 1   |      |      | 2079764-1 WASHER, WAVE SPRING, CREST-TO-CREST | 243     |
|           | 1    | 1   |      |      | 2119083-1 RETAINER, INSULATION DIAL           | 242     |
| -         | 1    | 1   |      |      | 7-18023-7 SCR, SKT HD CAP M3 X 4.0            | 241     |
| -         | -    | 1   |      |      | 2119580-1 MECHANICAL FEED ASSEMBLY            | 239     |
| -         | 1    | -   |      |      | 2844940-1 AIR FEED MODULE                     | 238     |
| -         | REF  | REF |      |      | 994970-2 COUNTER, MAGNETIC                    | 164     |
| -         | 1    | -   |      |      | 2119641-2 FEED CAM, AIR FEED                  | 151     |
| -         | 1    | 1   |      |      | 2168083-8 SCR, SKT HD CAP, RoHS, M4 X 16      | 144     |
| -         | 4    | 4   |      |      | 2168083-9 SCR, SKT HD CAP, RoHS, M4 X 20      | 143     |
| -         | -    | 1   |      |      | 2119653-2 FEED CAM, POST FEED                 | 142     |
| -         | 1    | 1   |      |      | 1-1803583-0 APPLICATOR BASIC ASSEMBLY, SF     | 141     |
| -         | 1    | 1   |      |      | 1803516-1 RAM ASSEMBLY, SF PACIFIC            | 140     |
| -         | 1    | 1   |      |      | 2844908-1 SCREW, LOCKING                      | 99      |
| -         | 1    | 1   |      |      | 2844907-1 POST, LOCKING                       | 98      |
| -         | 1    | 1   |      |      | 455888-6 SPACER, CRIMPER                      | 82      |
| -         | 1    | 1   |      |      | 1803607-3 DOCUMENTATION PACKAGE               | 71      |
| -         | 1    | 1   |      |      | 2119791-5 DEPRESSOR, WIRE                     | 70      |
| -         | 1    | 1   |      |      | 2119740-1 TAG IDENTIFICATION                  | 67      |
| -         | 2    | 2   |      |      | 2168078-1 SCREW, DRIVE, RH, RoHS, 2 x .188    | 66      |
| -         | 1    | 1   |      |      | 5-18022-5 SCR, HEX HD CAP, M4 X 6.0           | 59      |
| -         | 1    | 1   |      |      | 1338685-1 PAWL, FEED                          | 56      |
| -         | 2    | 2   |      |      | 1-2168083-0 SCR, SKT HD CAP, RoHS, M4 X 10    | 53      |
| -         | 1    | 1   |      |      | 5018030-1 NUT, HEX, REG, RoHS, M3             | 52      |
| -         | 1    | 1   |      |      | 811242-5 BUMPER, HOLD DOWN                    | 51      |
| -         | 1    | 1   |      |      | 690753-2 SPACER, TONKER                       | 50      |
| -         | 1    | 2   |      |      | 18023-9 SCR, SKT HD CAP M4 X 6.0              | 49      |
| -         | -    | 1   |      |      | 2119652-1 FEED CAM, PRE FEED                  | 48      |
| -         | 1    | 1   |      |      | 1803602-1 SCR, BHSC, RoHS (M8 X 25)           | 41      |
| -         | 1    | 1   |      |      | 5-1752356-5 SUPPORT, TERMINAL                 | 34      |
| -         | 2    | 2   |      |      | 2079383-5 SCR, BHSC, RoHS (M4 X 20)           | 33      |
| -         | 2    | 2   |      |      | 2-2844962-6 SPACER, CYLINDRICAL, STRIP GUIDE  | 30      |
| -         | 1    | 1   |      |      | 2844992-1 ASSEMBLY, STRIP GUIDE               | 29      |
| -         | 1    | 1   |      |      | 455888-4 SPACER, CRIMPER                      | 28      |
| -         | 1    | 1   |      |      | 1320928-2 STRIP GUIDE                         | 24      |
| -         | 1    | 1   |      |      | 2168083-2 SCR, SKT HD CAP, RoHS, M4 X 8.0     | 21      |
| -         | 1    | 1   |      |      | 1-18028-2 WASHER, FLAT, REG M4                | 20      |
| -         | 1    | 1   |      |      | 2119533-1 STRIPPER, SIDE FEED                 | 19      |
|           | 1    | 1   |      |      | 2119806-1 INSERT, SHEAR                       | 13      |
| -         | 1    | 1   |      |      | 3-22280-3 SPRING, COMPRESSION                 | 12      |
| -         | 1    | 1   |      |      | 1-356885-4 STOP, SHEAR                        | 11      |
|           | 1    | 1   |      |      | 2119805-1 SHEAR HOLDER, FRONT                 | 10      |
|           | 1    | 1   |      |      | 1803095-6 FLOATING SHEAR, FRONT               | 9       |
|           | 1    | 1   |      |      | 1333203-7 ANVIL, COMBINATION                  | 8       |
| -         | 1    | 1   |      |      | 2119757-8 DEPRESSOR, SHEAR                    | 5       |
| -         | 1    | 1   |      |      | 5-238011-5 BLOCK, CRIMPER SPACER              | 4       |
|           | 1    | 1   |      |      | 1-1633961-3 CRIMPER, INSULATION F PREMIUM     | 3       |
|           | 1    | 1   |      |      | 1-456404-8 CRIMPER, WIRE PREMIUM              | 1       |

| DIMENSIONS: |         | TOLERANCES UNLESS OTHERWISE SPECIFIED: |         | MATERIAL: |         | FINISH: |        |
|-------------|---------|--|---------|-----------|---------|---------|--------|
| mm          | 0 PLC ± | 1 PLC ±                                | 2 PLC ± | 3 PLC ±   | 4 PLC ± | ANGLES  | FINISH |

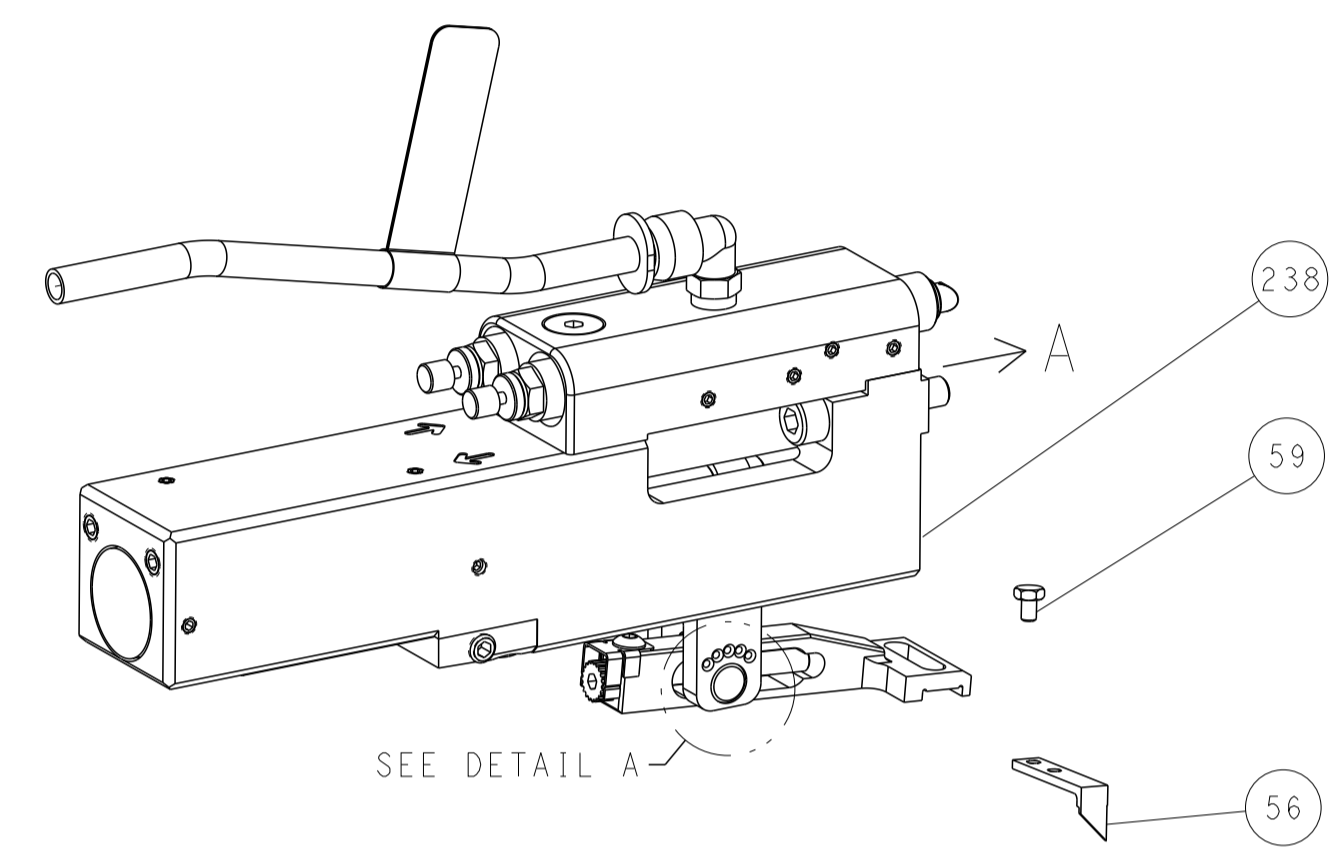
|              |           |                  |           |
|--------------|-----------|------------------|-----------|
| DATE         | 16AUG2011 | CHKD             | H. HUANG  |
| APVD         | S. XI     | DATE             | 16AUG2011 |
| PRODUCT SPEC |           | APPLICATION SPEC |           |
| SIZE         | A1        | CAGE CODE        | 00779     |
| DRAWING NO   | 2151198   | SCALE            | 1:2       |
| SHEET        | 3         | OF               | 4         |
| REV          | B         |                  |           |

| LOC | DIST | REVISIONS   |      |    |      |
|-----|------|-------------|------|----|------|
| A   | 66   | REV         | DATE | BY | APPV |
|     |      | SEE SHEET 1 |      |    |      |

# FEED TYPE MECHANICAL



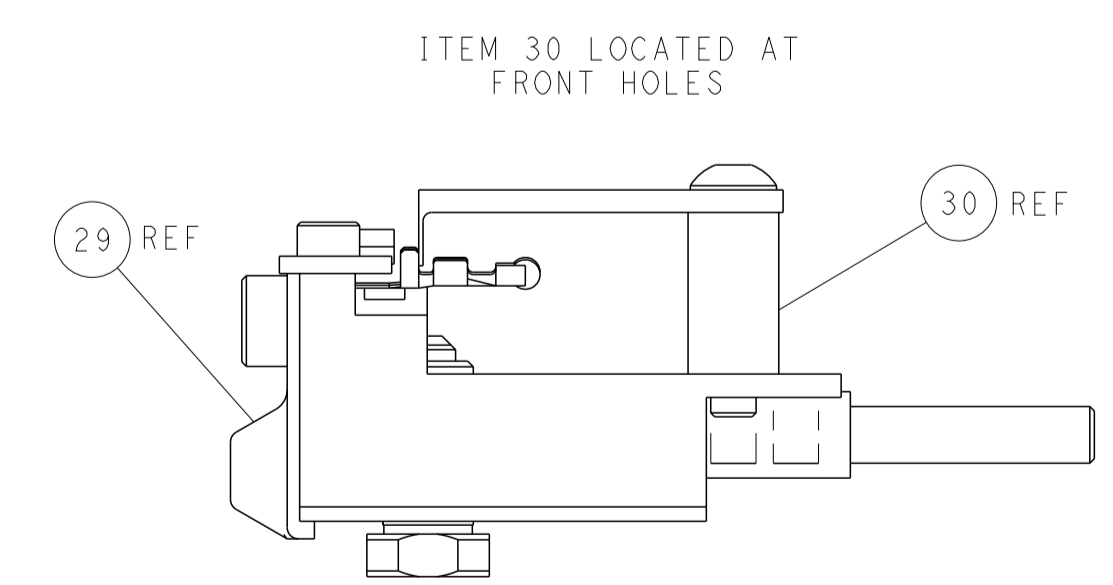
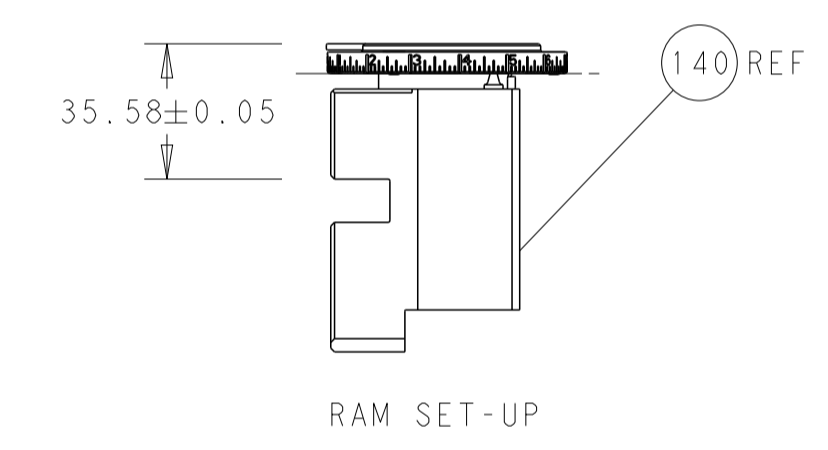
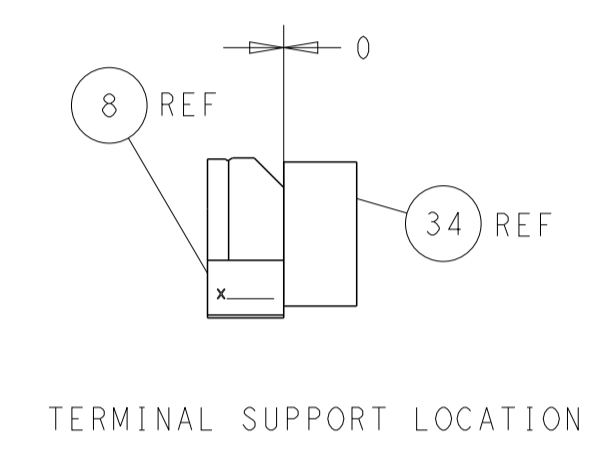
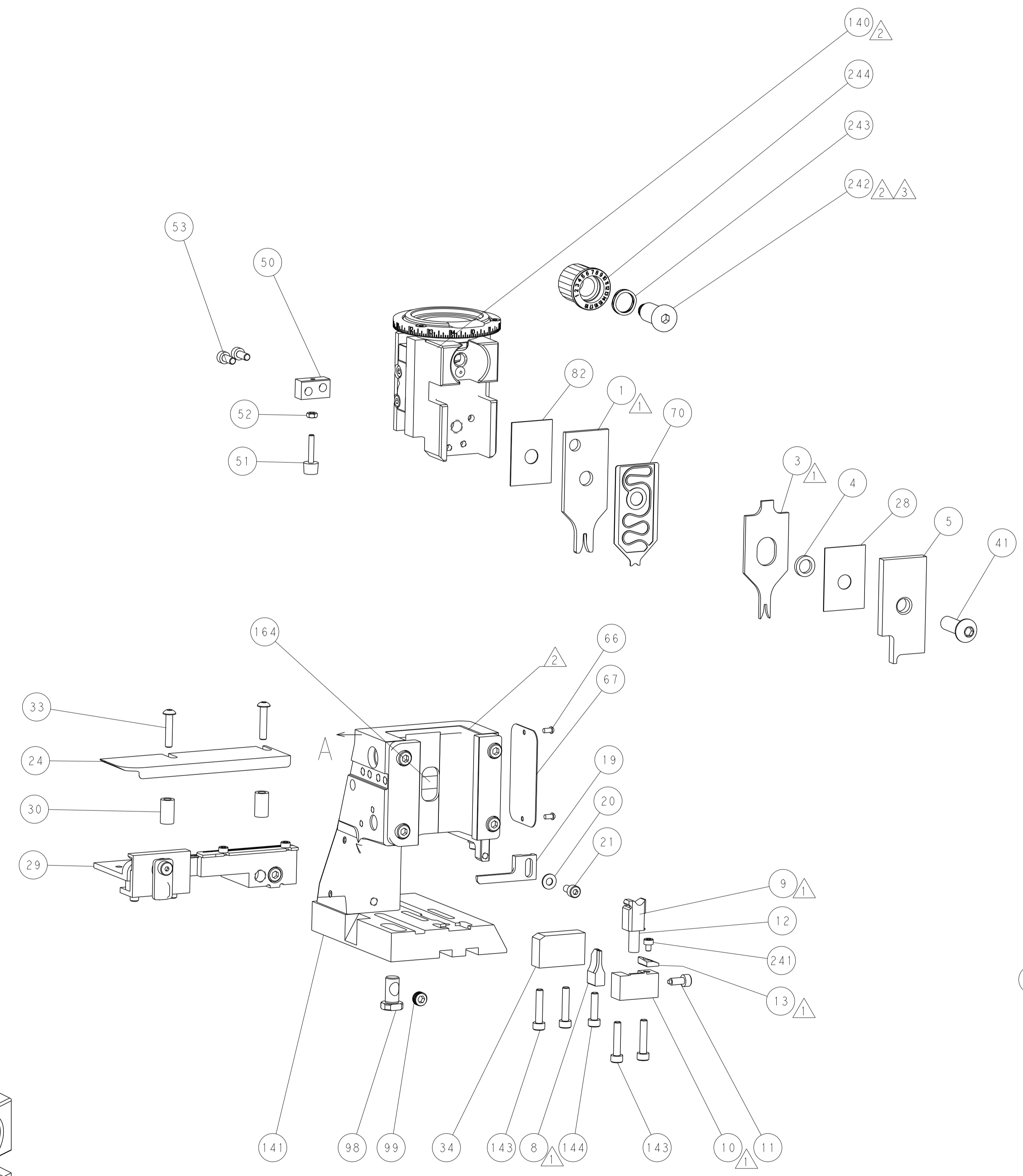
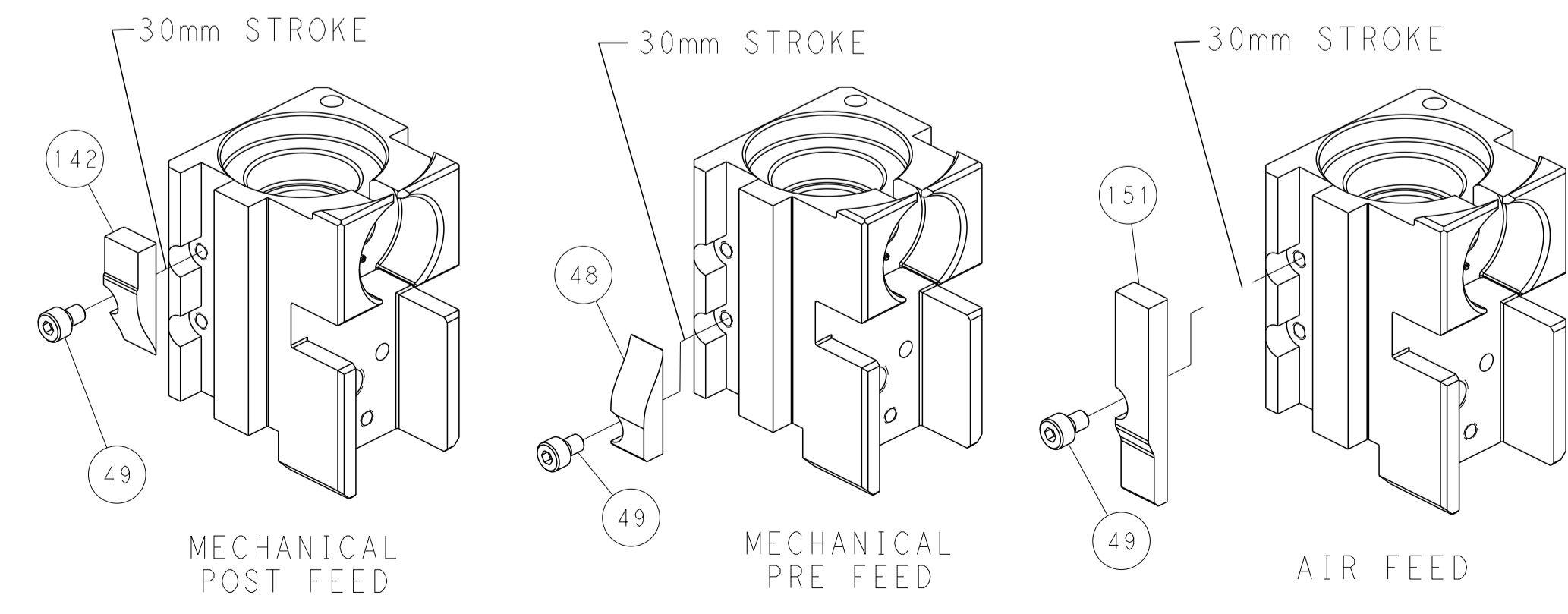
## PNEUMATIC



### FEED SPRING SETTING POSITION (SHOWN FROM REAR SIDE)



## CAM POSITIONS



**PACIFIC VERSION**  
 Shown on sheets 3 of 4 & 4 of 4  
 (Atlantic version shown on sheets 1 of 4 & 2 of 4)

|                       |  |   |  |   |  |   |  |
|-----------------------|--|---|--|---|--|---|--|
| DIMENSIONS:<br>mm<br> |  | TOLERANCES UNLESS OTHERWISE SPECIFIED:<br>0 PLC ±<br>1 PLC ±<br>2 PLC ±<br>3 PLC ±<br>4 PLC ±<br>ANGLES ±<br>FINISH ± |  | DWN R. HUANG 16AUG2011<br>CHK S. XI 16AUG2011<br>APVD S. XI 16AUG2011<br>PRODUCT SPEC<br>APPLICATION SPEC<br>WEIGHT<br>Customer Accessible Production Drawing |  | NAME Ocean Side Feed Applicator<br>SIZE CAGE CODE DRAWING NO. A1 00779 C=2151198<br>RESTRICTED TO |  |
| MATERIAL              |  | SCALE 1:2   |  | SHEET 4 OF 4  |  | REV B   |  |

## X-ON Electronics

Largest Supplier of Electrical and Electronic Components

*Click to view similar products for [Crimpers / Crimping Tools](#) category:*

*Click to view products by [TE Connectivity](#) manufacturer:*

Other Similar products are found below :

[010-0096](#) [M225201-06](#) [M225202-37](#) [6-1579015-5](#) [622-6441LF](#) [M322](#) [6-304052-1](#) [63456-0054](#) [63484-3701](#) [63800-8355](#) [63819-1875](#)  
[63819-2875](#) [63819-4475](#) [63823-3475](#) [63827-5375](#) [64001-0975](#) [64001-4175](#) [64005-0175](#) [662903-2](#) [690602-6](#) [7-1579001-9](#) [7-23471-1](#)  
[762637-1](#) [808714-1](#) [811242-5](#) [999-50-020083](#) [1-21002-3](#) [1-21002-7](#) [12085270](#) [1-21002-6](#) [1-21113-6](#) [1-22548-4](#) [125442-1](#)  
[DCE.91.073.BVC](#) [DCE.91.090.3MVM](#) [DCE.91.130.5MVU](#) [DCE.91.202.BVCM](#) [1338300-1](#) [1-354003-0](#) [1338301-1](#) [DF62/RE-MD](#) [142321](#)  
[1456088-1](#) [1490794-1](#) [1-45804-6](#) [1490357-2](#) [1490357-3](#) [AX100749](#) [1-59619-7](#) [1596970-1](#)