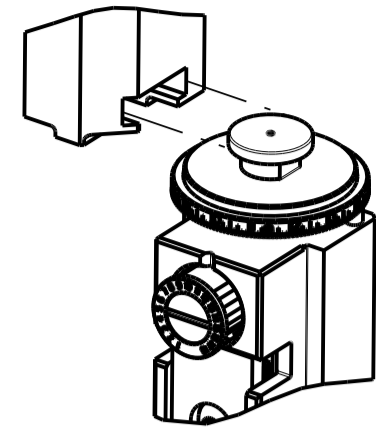


| PART NUMBER | REVISION | DESCRIPTION                      | FEED TYPE  |
|-------------|----------|----------------------------------|------------|
| 2151353-1   | J        | FINE CRIMP HEIGHT ADJUST         | MECHANICAL |
| 2151353-2   | K        | FINE CRIMP HEIGHT ADJUST         | PNEUMATIC  |
| 7-2151353-1 | J        | MECHANICAL AND CRIMP TOOLING KIT | MECHANICAL |
| 7-2151353-2 | K        | PNEUMATIC AND CRIMP TOOLING KIT  | PNEUMATIC  |
| 7-2151353-7 | A        | CRIMP TOOLING KIT                | -          |

ATLANTIC VERSION TERMINATOR INTERFACE ADAPTER



| APPLICATOR DATA |                |      |
|-----------------|----------------|------|
| CRIMP           | SIZE           | TYPE |
| WIRE            | 1.78 mm [.070] | F    |
| INSUL           | 2.29 mm [.090] | BX   |

APPLICATOR INSTRUCTIONS 408-35042

| TERMINAL DATA: TE TERMINAL         |             | TE CRIMP SPECIFICATION       |             |
|------------------------------------|-------------|------------------------------|-------------|
| TERMINAL NAME: MCON 1.2 LL         |             |                              |             |
| WIRE STRIP LENGTH                  |             | INSULATION DIAMETER RANGE    |             |
| 3.30-3.90 mm [.130-.154 IN]        |             | Ø1.90-2.40 mm [.075-.094 IN] |             |
| TERMINAL APPLICATION SPECIFICATION | 114-18464   |                              |             |
| TERMINALS APPLIED <sup>5</sup>     |             |                              |             |
| TE TERMINAL                        | TE TERMINAL | TE TERMINAL                  | TE TERMINAL |
| 1452659-1                          | 1452659-2   | 1452659-3                    |             |
| 7-1452659-1                        | 7-1452659-2 | 7-1452659-3                  |             |

| WIRE SIZE | CRIMP HEIGHT mm [INCH]     | CRIMP HEIGHT REFERENCE SETTING |
|-----------|----------------------------|--------------------------------|
| 1.50mm2   | 1.31+/-0.05 [.052+/-0.002] | 8.0                            |
| 16 AWG    | 1.26+/-0.05 [.050+/-0.002] | 8.5                            |
| 1.00mm2   | 1.10+/-0.05 [.043+/-0.002] | 10.0                           |
| 18 AWG    | 1.05+/-0.05 [.041+/-0.002] | 10.6                           |



- <sup>1</sup> RECOMMENDED SPARE PARTS
- <sup>2</sup> REFER TO SUPPLIED INSTRUCTION SHEET FOR CLEANING, LUBRICATION AND STORAGE OF APPLICATOR.
- <sup>3</sup> APPLY PART NUMBER 2-23419-6 LOCTITE TO THREADS OF ITEM 242.
- <sup>4</sup> CRIMP HEIGHT REFERENCE SETTING WAS THE SETTING USED WHEN THE APPLICATOR WAS QUALIFIED AT THE FACTORY. ADJUSTMENT MAY BE NECESSARY WHEN RUNNING APPLICATOR IN THE FIELD.
- <sup>5</sup> TERMINAL LUBRICANT IS RECOMMENDED.
- 6. UNLESS SPECIFIED OTHERWISE TORQUE VALUES SHALL BE USED PER DOCUMENT, 101-35000.

**\*WARNING**  
ON INSTALLATION, SET WIRE DISC TO CRIMP HEIGHT REFERENCE SETTING FOR LARGEST WIRE SIZE. CRIMP HEIGHT REFERENCE SETTINGS GREATER THAN THE VALUE SHOWN MAY CAUSE DAMAGE TO THE CRIMP TOOLING, REFER TO THE INSTRUCTION SHEET FOR PROPER SETUP AND ADJUSTMENTS.

**ATLANTIC VERSION**  
Shown on sheets 1 of 4 & 2 of 4  
(Pacific version shown on sheets 3 of 4 & 4 of 4)

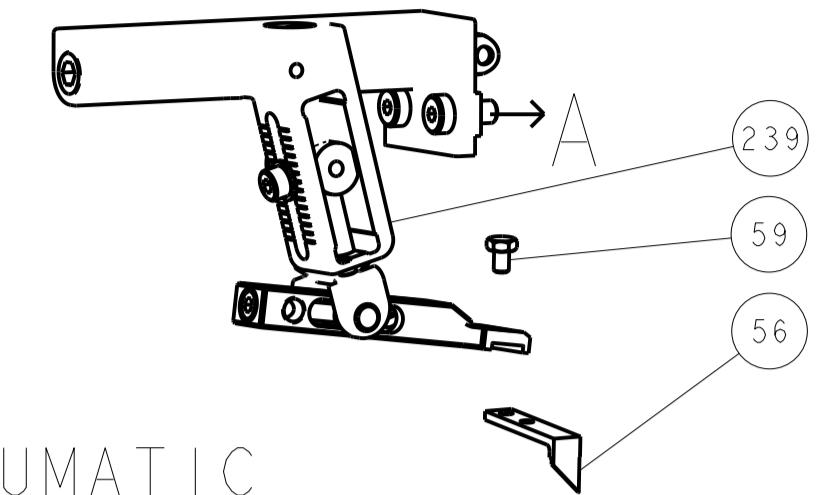
| LOC | DIST | REVISIONS |           |     |      |
|-----|------|-----------|-----------|-----|------|
| A   | 66   | REV       | DATE      | BY  | APPV |
|     |      | H         | 18APR2017 | TB  | TE   |
|     |      | J         | 20APR2018 | MEH | JDG  |
|     |      | K         | 10APR2019 | FJ  | TE   |
|     |      | K1        | 17MAY2021 | AJ  | YY   |

|   |     |     |     |     |             |                                     |             |         |
|---|-----|-----|-----|-----|-------------|-------------------------------------|-------------|---------|
| - | 1   | -   | 1   | -   | 2119641-1   | FEED CAM, AIR FEED                  | 248         |         |
| - | 1   | 1   | 1   | 1   | 2119082-4   | CAM, SNAIL, INSULATION ADJUSTMENT   | 244         |         |
| - | 1   | 1   | 1   | 1   | 2079764-1   | WASHER, WAVE SPRING, CREST-TO-CREST | 243         |         |
| - | 1   | 1   | 1   | 1   | 2119083-1   | RETAINER, INSULATION DIAL           | 242         |         |
| - | 1   | 1   | 1   | 1   | 7-18023-7   | SCR, SKT HD CAP M3 X 4.0            | 241         |         |
| - | -   | 1   | -   | 1   | 2119580-1   | MECHANICAL FEED ASSEMBLY            | 239         |         |
| - | 1   | -   | 1   | -   | 2844940-1   | AIR FEED MODULE                     | 238         |         |
| - | REF | REF | REF | REF | 994970-2    | COUNTER, MAGNETIC                   | 164         |         |
| - | 1   | 1   | 1   | 1   | 2119955-1   | ASSY, LUBRICATOR, SIDE FEED         | 113         |         |
| - | 1   | 1   | 1   | 1   | 2844908-1   | SCREW, LOCKING                      | 99          |         |
| - | 1   | 1   | 1   | 1   | 2844907-1   | POST, LOCKING                       | 98          |         |
| - | 1   | 1   | 1   | 1   | 455888-5    | SPACER, CRIMPER                     | 82          |         |
| - | 1   | 1   | 1   | 1   | 22278-8     | SPRING, COMPRESSION                 | 77          |         |
| - | 1   | 1   | 1   | 1   | 854769-4    | HOLDER, INS                         | 74          |         |
| - | 1   | 1   | 1   | 1   | 1803607-3   | DOCUMENTATION PACKAGE               | 71          |         |
| - | 1   | 1   | 1   | 1   | 2119740-1   | TAG, IDENTIFICATION                 | 67          |         |
| - | 2   | 2   | 2   | 2   | 2168078-1   | SCREW, DRIVE, RH, RoHS, 2 x .188    | 66          |         |
| - | 1   | 1   | 1   | 1   | 2168083-2   | SCR, SKT HD CAP, RoHS, M4 X 8.0     | 60          |         |
| - | 1   | 1   | 1   | 1   | 5-18022-5   | SCR, HEX HD CAP, M4 X 6.0           | 59          |         |
| - | 1   | 1   | 1   | 1   | 21028-2     | PIN, SLOTTED SPRING .062 X .250     | 58          |         |
| - | 1   | 1   | 1   | 1   | 1338685-1   | PAWL, FEED                          | 56          |         |
| - | 4   | 4   | 4   | 4   | 2168083-3   | SCR, SKT HD CAP, RoHS, M4 X 12.0    | 54          |         |
| - | 2   | 2   | 2   | 2   | 1-2168083-0 | SCR, SKT HD CAP, RoHS, M4 X 10      | 53          |         |
| - | 1   | 2   | 1   | 2   | 18023-9     | SCR, SKT HD CAP M4 X 6.0            | 49          |         |
| - | -   | 1   | -   | 1   | 2119652-1   | FEED CAM, PRE FEED                  | 48          |         |
| - | -   | 1   | -   | 1   | 2119653-1   | FEED CAM, POST FEED                 | 47          |         |
| - | 1   | 1   | 1   | 1   | 1803583-9   | APPLICATOR BASIC ASSEMBLY, SF       | 46          |         |
| - | 1   | 1   | 1   | 1   | 1803515-1   | RAM ASSEMBLY, SF ATLANTIC           | 44          |         |
| - | 1   | 1   | 1   | 1   | 1803602-1   | SCR, BHSC, RoHS (M8 X 25)           | 41          |         |
| - | 1   | 1   | 1   | 1   | 1752356-6   | SUPPORT, TERMINAL                   | 34          |         |
| - | 2   | 2   | 2   | 2   | 2079383-5   | SCR, BHSC, RoHS (M4 X 20)           | 33          |         |
| - | 2   | 2   | 2   | 2   | 2-2844962-6 | SPACER, CYLINDRICAL, STRIP GUIDE    | 30          |         |
| - | 1   | 1   | 1   | 1   | 2844992-2   | ASSEMBLY, STRIP GUIDE               | 29          |         |
| - | 1   | 1   | 1   | 1   | 455888-4    | SPACER, CRIMPER                     | 28          |         |
| - | 1   | 1   | 1   | 1   | 1320928-2   | STRIP GUIDE                         | 24          |         |
| - | 1   | 1   | 1   | 1   | 2168083-2   | SCR, SKT HD CAP, RoHS, M4 X 8.0     | 21          |         |
| - | 4   | 4   | 4   | 4   | 1-18028-2   | WASHER, FLAT, REG M4                | 20          |         |
| - | 1   | 1   | 1   | 1   | 2119533-1   | STRIPPER, SIDE FEED                 | 19          |         |
| - | 1   | 1   | 1   | 1   | 1333264-1   | HOLD DOWN                           | 18          |         |
| - | 1   | 1   | 1   | 1   | 2119806-1   | INSERT, SHEAR                       | 13          |         |
| - | 1   | 1   | 1   | 1   | 3-22280-3   | SPRING, COMPRESSION                 | 12          |         |
| - | 1   | 1   | 1   | 1   | 1-356885-4  | STOP, SHEAR                         | 11          |         |
| - | 1   | 1   | 1   | 1   | 2119805-1   | SHEAR HOLDER, FRONT                 | 10          |         |
| - | 1   | 1   | 1   | 1   | 1633861-1   | SHEAR, FLOATING                     | 9           |         |
| - | 1   | 2   | 2   | 1   | 4-1333203-2 | ANVIL, COMBINATION                  | 8           |         |
| - | -   | -   | -   | -   | -           | -                                   | 7           |         |
| - | -   | -   | -   | -   | -           | -                                   | 6           |         |
| - | 1   | 1   | 1   | 1   | 1-2119780-1 | DEPRESSOR, SHEAR                    | 5           |         |
| - | 1   | 1   | 1   | 1   | 4-238011-1  | BLOCK, CRIMPER SPACER               | 4           |         |
| - | 1   | 2   | 2   | 1   | 1633989-8   | CRIMPER, INSULATION, SPECIAL        | 3           |         |
| - | 1   | 2   | 2   | 1   | 1633169-2   | CRIMPER, WIRE, SPECIAL              | 1           |         |
| - | 77  | 72  | 71  | 2   | 1           | PART NO                             | DESCRIPTION | ITEM NO |

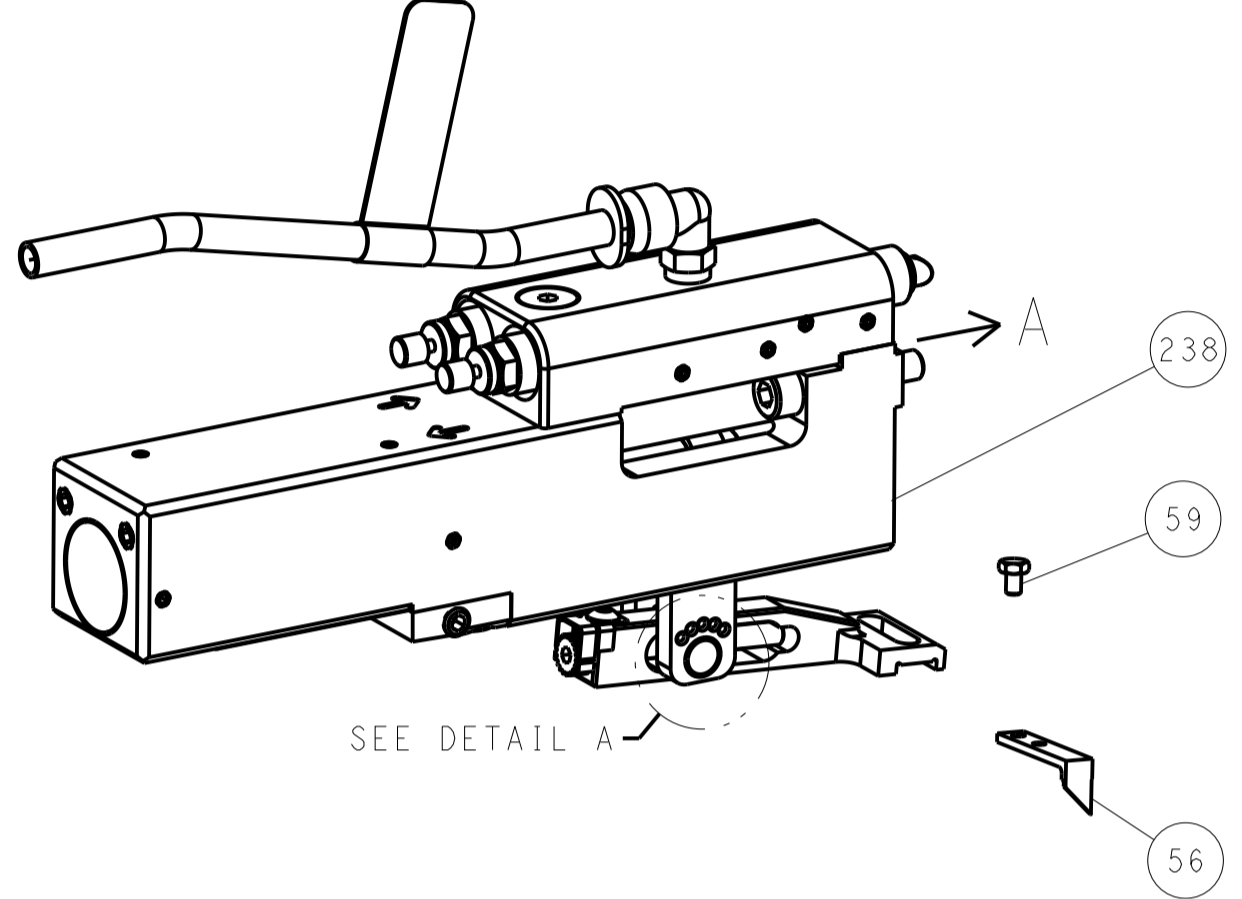
| DIMENSIONS: |         | TOLERANCES UNLESS OTHERWISE SPECIFIED: |          | DRAWING NO                             |                               |
|-------------|---------|--|----------|--|-------------------------------|
| mm          | 0 PLC ± | 1 PLC ±                                | 2 PLC ±  | 26 JUL 2012                            | 26 JUL 2012                   |
|             | 3 PLC ± | 4 PLC ±                                | ANGLES ± | CHK L. ZHANG                           | CHK L. ZHANG                  |
|             | FINISH  |  |          | APPV S. XI                             | APPV S. XI                    |
| MATERIAL    |         | WEIGHT                                 |          | NAME                                   | TE Connectivity               |
|             |         |  |          | Ocean Side Feed                        | Harrisburg, PA 17105-3608     |
|             |         |  |          | PRODUCT SPEC                           |                               |
|             |         |  |          | APPLICATION SPEC                       |                               |
|             |         |  |          | SIZE                                   | CAGE CODE                     |
|             |         |  |          | A1                                     | 00779                         |
|             |         |  |          | DRAWING NO                             | 2151353                       |
|             |         |  |          | RESTRICTED TO                          |                               |
|             |         |  |          | Customer Accessible Production Drawing | SCALE 1:2 SHEET 1 OF 4 REV K1 |

| LOC |    | DIST |     | REVISIONS   |      |     |      |
|-----|----|------|-----|-------------|------|-----|------|
| A   | 66 | P    | LTM | DESCRIPTION | DATE | OWN | APVD |
|     |    | -    |     | SEE SHEET 1 |      |     |      |

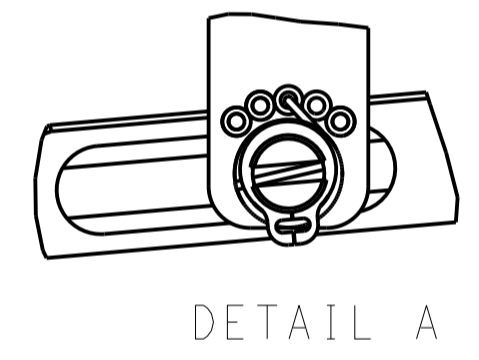
# FEED TYPE MECHANICAL



## PNEUMATIC

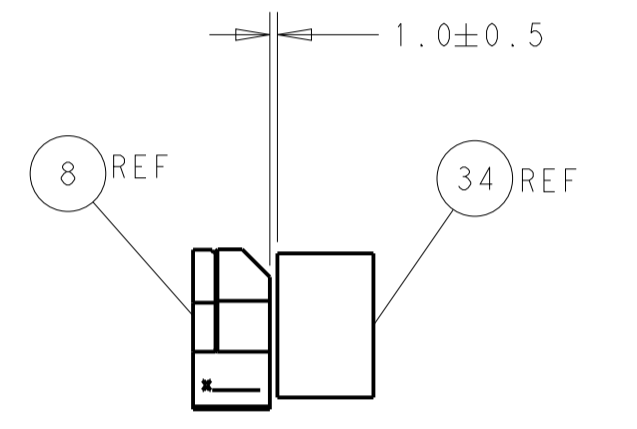
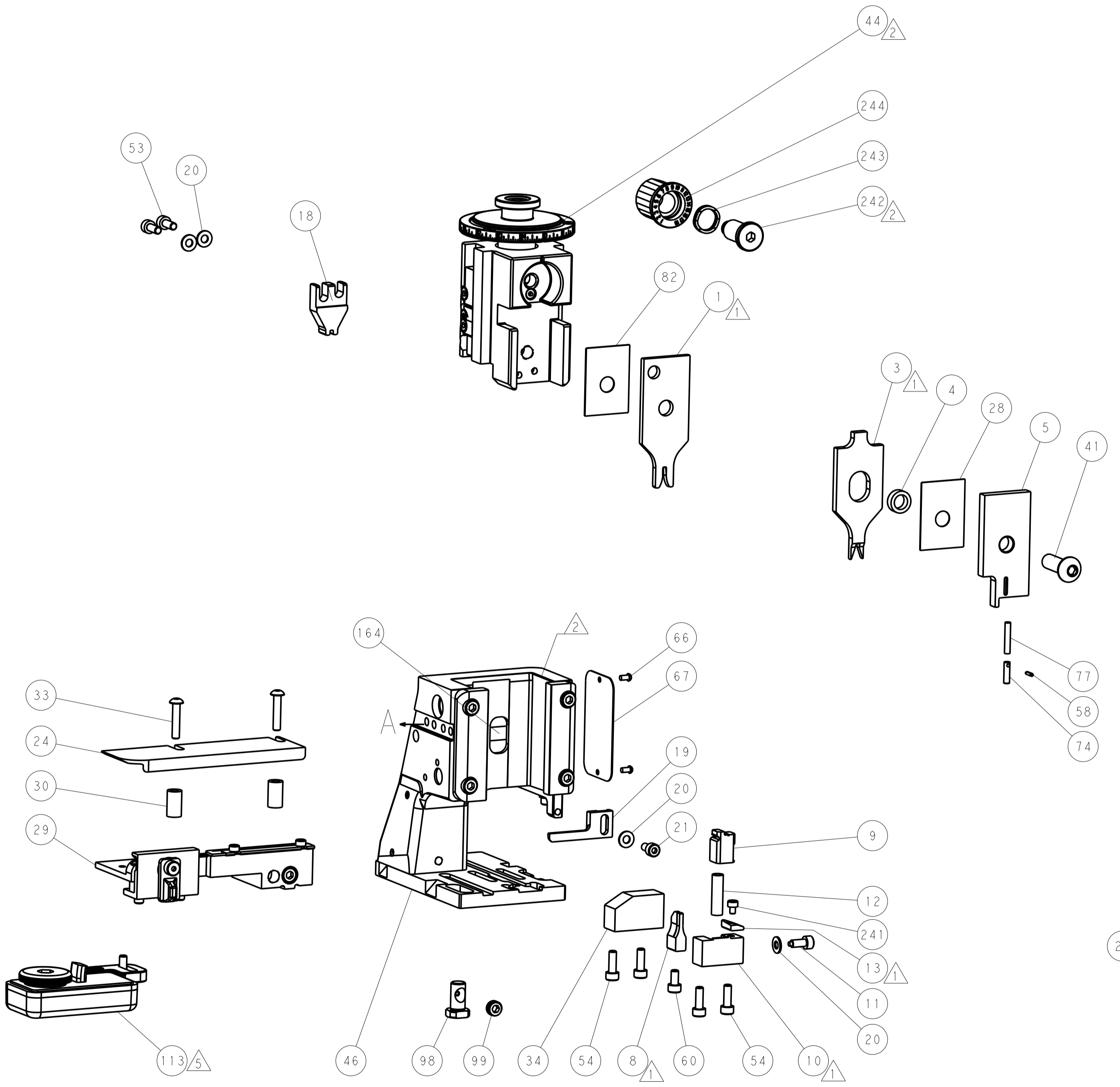
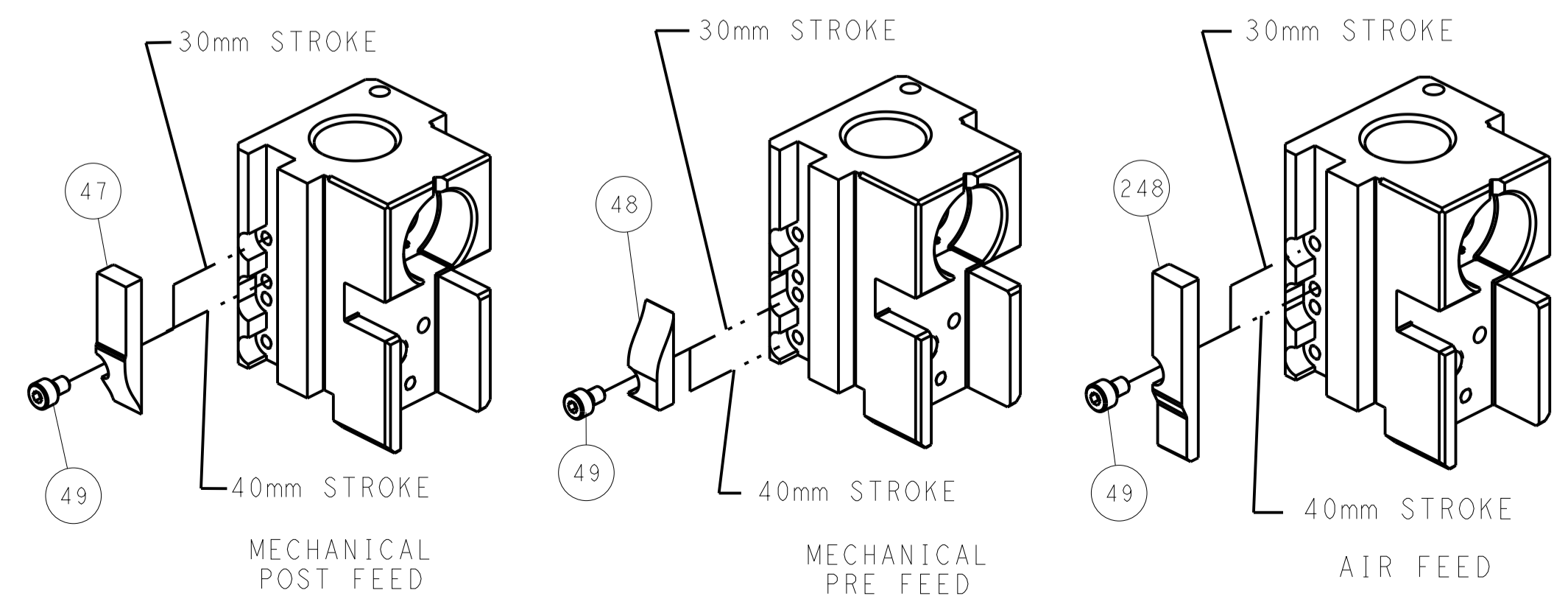


### FEED SPRING SETTING POSITION (SHOWN FROM REAR SIDE)

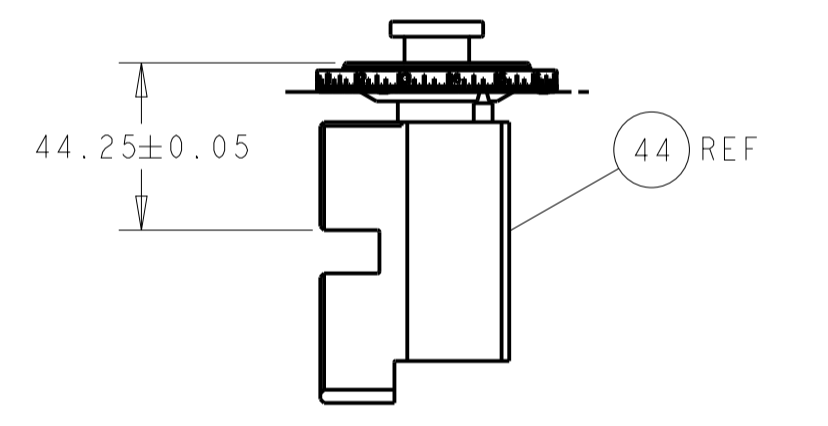


DETAIL A

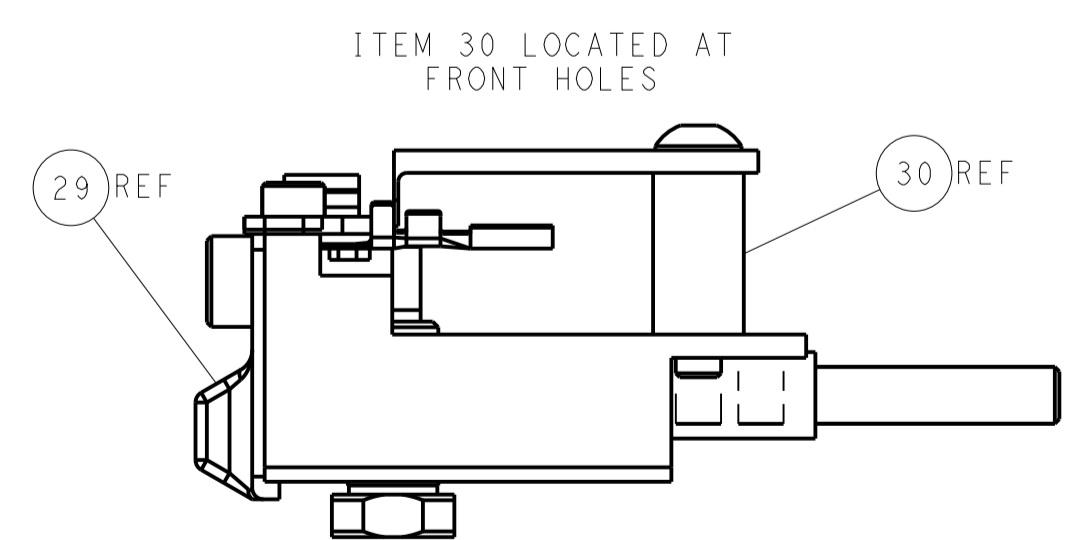
## CAM POSITIONS



TERMINAL SUPPORT LOCATION



RAM SET-UP



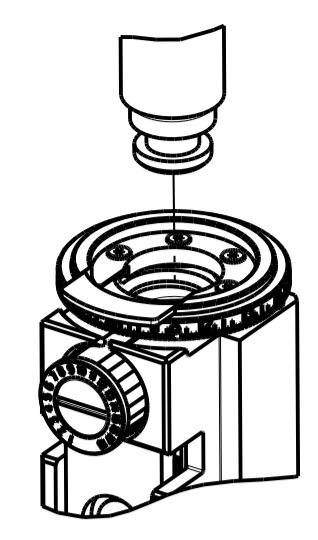
FEED TRACK POSITION GUIDE BY INSULATION BARREL

**ATLANTIC VERSION**  
 Shown on sheets 1 of 4 & 2 of 4  
 (Pacific version shown on sheets 3 of 4 & 4 of 4)

|             |         |  |         |  |         |                                 |  |
|-------------|---------|--|---------|--|---------|---------------------------------|--|
| DIMENSIONS: |         | TOLERANCES UNLESS OTHERWISE SPECIFIED: |         | DWN L. ZHANG 26 JUL 2012               |         | TE Connectivity                 |  |
| mm          | 0 PLC ± | 1 PLC ±                                | 2 PLC ± | 3 PLC ±                                | 4 PLC ± | Harrisburg, PA 17105-3608       |  |
| MATERIAL:   |         | FINISH:                                |         | APVD S. XI 26 JUL 2012                 |         | NAME Ocean Side Feed Applicator |  |
|             |         |  |         | PRODUCT SPEC                           |         | SIZE CAGE CODE DRAWING NO       |  |
|             |         |  |         | APPLICATION SPEC                       |         | A1 00779 ©=2151353              |  |
|             |         |  |         | WEIGHT                                 |         | RESTRICTED TO                   |  |
|             |         |  |         | Customer Accessible Production Drawing |         | SCALE 1:2 SHEET 2 OF 4 REV K1   |  |

| PART NUMBER | REVISION | DESCRIPTION              | FEED TYPE  |
|-------------|----------|--------------------------|------------|
| 2-2151353-1 | J        | FINE CRIMP HEIGHT ADJUST | MECHANICAL |
| 2-2151353-2 | K        | FINE CRIMP HEIGHT ADJUST | PNEUMATIC  |
| 7-2151353-7 | A        | CRIMP TOOLING KIT        | -          |

PACIFIC VERSION TERMINATOR  
INTERFACE ADAPTER

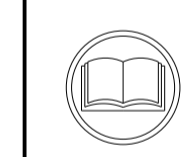


| APPLICATOR DATA |                |      |
|-----------------|----------------|------|
| CRIMP           | SIZE           | TYPE |
| WIRE            | 1.78 mm [.070] | F    |
| INSUL           | 2.29 mm [.090] | BX   |

APPLICATOR INSTRUCTIONS  
408-35042

| TERMINAL DATA: TE TERMINAL                       |             | TE CRIMP SPECIFICATION                                    |             |
|--|-------------|---|-------------|
| TERMINAL NAME: MCON 1.2 LL                       |             |   |             |
| WIRE STRIP LENGTH<br>3.30-3.90 mm [1.30-.154 IN] |             | INSULATION DIAMETER RANGE<br>Ø1.90-2.40 mm [.075-.094 IN] |             |
| TERMINAL APPLICATION SPECIFICATION               | 114-18464   | -   | -           |
| TERMINALS APPLIED                                |             |   |             |
| TE TERMINAL                                      | TE TERMINAL | TE TERMINAL   | TE TERMINAL |
| 1452659-1  | 1452659-2   | 1452659-3   |             |
| 7-1452659-1                                      | 7-1452659-2 | 7-1452659-3   |             |

| WIRE SIZE | CRIMP HEIGHT mm [INCH]      | CRIMP HEIGHT REFERENCE SETTING |
|-----------|-----------------------------|--------------------------------|
| 1.50mm2   | 1.31+/-0.05 [1.052+/-0.002] | 8.0                            |
| 16 AWG    | 1.26+/-0.05 [1.050+/-0.002] | 8.5                            |
| 1.00mm2   | 1.10+/-0.05 [1.043+/-0.002] | 10.0                           |
| 18 AWG    | 1.05+/-0.05 [1.041+/-0.002] | 10.6                           |



- 1 RECOMMENDED SPARE PARTS
- 2 REFER TO SUPPLIED INSTRUCTION SHEET FOR CLEANING, LUBRICATION AND STORAGE OF APPLICATOR.
- 3 APPLY PART NUMBER 2-23419-6 LOCTITE TO THREADS OF ITEM 242.
- 4 CRIMP HEIGHT REFERENCE SETTING WAS THE SETTING USED WHEN THE APPLICATOR WAS QUALIFIED AT THE FACTORY. ADJUSTMENT MAY BE NECESSARY WHEN RUNNING APPLICATOR IN THE FIELD.
- 5 TERMINAL LUBRICANT IS RECOMMENDED.
- 6. UNLESS SPECIFIED OTHERWISE TORQUE VALUES SHALL BE USED PER DOCUMENT, 101-35000.

**\*WARNING**  
ON INSTALLATION, SET WIRE DISC TO CRIMP HEIGHT REFERENCE SETTING FOR LARGEST WIRE SIZE. CRIMP HEIGHT REFERENCE SETTINGS GREATER THAN THE VALUE SHOWN MAY CAUSE DAMAGE TO THE CRIMP TOOLING, REFER TO THE INSTRUCTION SHEET FOR PROPER SETUP AND ADJUSTMENTS.

| ENTRY LEVEL APPLICATOR |             | ITEM SUBSTITUTION LIST |                     |                        |
|------------------------|-------------|------------------------|---------------------|------------------------|
| PART NUMBER            | SAME AS     | ITEM                   | ITEM DESCRIPTION    | SUBSTITUTE PART NUMBER |
| 8-2151353-1            | 2151353-1   | 1                      | WIRE CRIMPER        | 1803661-2              |
| 8-2151353-2            | 2151353-2   | 3                      | INSULATION CRIMPER  | 1803623-8              |
| 9-2151353-1            | 2-2151353-1 | 46                     | BASIC SUB -ASSEMBLY | 1803940-9              |
| 9-2151353-2            | 2-2151353-2 | 141                    | BASIC SUB -ASSEMBLY | 1-1803940-0            |
|                        |             |                        | LUBRICATOR          | DELETE                 |

**PACIFIC VERSION**  
Shown on sheets 3 of 4 & 4 of 4  
(Atlantic version shown on sheets 1 of 4 & 2 of 4)

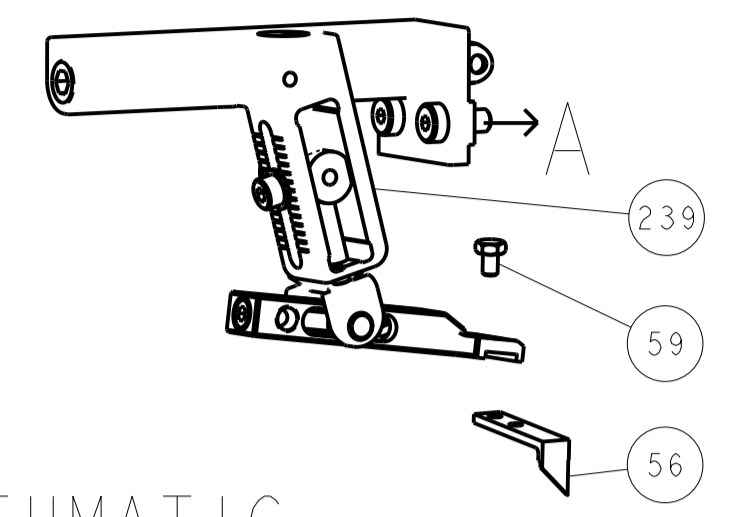
| LOC | DIST | REV | DATE | BY | APPV |
|-----|------|-----|------|----|------|
| A   | 66   |     |      |    |      |

| REVISIONS |      |             |             |                                     |      |
|-----------|------|-------------|-------------|-------------------------------------|------|
| REV       | DATE | DESCRIPTION | DATE        | BY                                  | APPV |
| -         | -    | SEE SHEET 1 | -           | -                                   | -    |
| -         | 1    | 1           | 2119082-4   | CAM, SNAIL, INSULATION ADJUSTMENT   | 244  |
| -         | 1    | 1           | 2079764-1   | WASHER, WAVE SPRING, CREST-TO-CREST | 243  |
| 3         | -    | 1           | 2119083-1   | RETAINER, INSULATION DIAL           | 242  |
| -         | 1    | 1           | 7-18023-7   | SCR, SKT HD CAP M3 X 4.0            | 241  |
| -         | -    | 1           | 2119580-1   | MECHANICAL FEED ASSEMBLY            | 239  |
| -         | 1    | -           | 2844940-1   | AIR FEED MODULE                     | 238  |
| -         | REF  | REF         | 994970-2    | COUNTER, MAGNETIC                   | 164  |
| -         | 1    | -           | 2119641-2   | FEED CAM, AIR FEED                  | 151  |
| -         | 1    | 1           | 2168083-8   | SCR, SKT HD CAP, RoHS, M4 X 16      | 144  |
| -         | 4    | 4           | 2168083-9   | SCR, SKT HD CAP, RoHS, M4 X 20      | 143  |
| -         | -    | 1           | 2119653-2   | FEED CAM, POST FEED                 | 142  |
| -         | 1    | 1           | 1-1803583-0 | APPLICATOR BASIC ASSEMBLY, SF       | 141  |
| -         | 1    | 1           | 1803516-1   | RAM ASSEMBLY, SF PACIFIC            | 140  |
| 5         | -    | 1           | 2119955-1   | ASSY, LUBRICATOR, SIDE FEED         | 113  |
| -         | 1    | 1           | 2844908-1   | SCREW, LOCKING                      | 99   |
| -         | 1    | 1           | 2844907-1   | POST, LOCKING                       | 98   |
| -         | 1    | 1           | 455888-5    | SPACER, CRIMPER                     | 82   |
| -         | 1    | 1           | 22278-8     | SPRING, COMPRESSION                 | 77   |
| -         | 1    | 1           | 854769-4    | HOLDER, INS                         | 74   |
| -         | 1    | 1           | 1803607-3   | DOCUMENTATION PACKAGE               | 71   |
| -         | 1    | 1           | 2119740-1   | TAG, IDENTIFICATION                 | 67   |
| -         | 2    | 2           | 2168078-1   | SCREW, DRIVE, RH, RoHS, 2 x .188    | 66   |
| -         | 1    | 1           | 5-18022-5   | SCR, HEX HD CAP, M4 X 6.0           | 59   |
| -         | 1    | 1           | 21028-2     | PIN, SLOTTED SPRING .062 X .250     | 58   |
| -         | 1    | 1           | 1338685-1   | PAWL, FEED                          | 56   |
| -         | 2    | 2           | 1-2168083-0 | SCR, SKT HD CAP, RoHS, M4 X 10      | 53   |
| -         | 1    | 2           | 18023-9     | SCR, SKT HD CAP M4 X 6.0            | 49   |
| -         | -    | 1           | 2119652-1   | FEED CAM, PRE FEED                  | 48   |
| -         | 1    | 1           | 1803602-1   | SCR, BHSC, RoHS (M8 X 25)           | 41   |
| -         | 1    | 1           | 1752356-6   | SUPPORT, TERMINAL                   | 34   |
| -         | 2    | 2           | 2079383-5   | SCR, BHSC, RoHS (M4 X 20)           | 33   |
| -         | 2    | 2           | 2-2844962-6 | SPACER, CYLINDRICAL, STRIP GUIDE    | 30   |
| -         | 1    | 1           | 2844992-2   | ASSEMBLY, STRIP GUIDE               | 29   |
| -         | 1    | 1           | 455888-4    | SPACER, CRIMPER                     | 28   |
| -         | 1    | 1           | 1320928-2   | STRIP GUIDE                         | 24   |
| -         | 1    | 1           | 2168083-2   | SCR, SKT HD CAP, RoHS, M4 X 8.0     | 21   |
| -         | 4    | 4           | 1-18028-2   | WASHER, FLAT, REG M4                | 20   |
| -         | 1    | 1           | 2119533-1   | STRIPPER, SIDE FEED                 | 19   |
| -         | 1    | 1           | 133264-1    | HOLD DOWN                           | 18   |
| 1         | 1    | 1           | 2119806-1   | INSERT, SHEAR                       | 13   |
| -         | 1    | 1           | 3-22280-3   | SPRING, COMPRESSION                 | 12   |
| -         | 1    | 1           | 1-356885-4  | STOP, SHEAR                         | 11   |
| -         | 1    | 1           | 2119805-1   | SHEAR HOLDER, FRONT                 | 10   |
| -         | 1    | 1           | 1633861-1   | SHEAR, FLOATING                     | 9    |
| 1         | 1    | 1           | 4-1333203-2 | ANVIL, COMBINATION                  | 8    |
| -         | -    | -           | -           | -                                   | 7    |
| -         | -    | -           | -           | -                                   | 6    |
| -         | 1    | 1           | 1-2119780-1 | DEPRESSOR, SHEAR                    | 5    |
| -         | 1    | 1           | 4-238011-1  | BLOCK, CRIMPER SPACER               | 4    |
| 1         | 1    | 1           | 1633989-8   | CRIMPER, INSULATION, SPECIAL        | 3    |
| 1         | 1    | 1           | 1633169-2   | CRIMPER, WIRE, SPECIAL              | 1    |

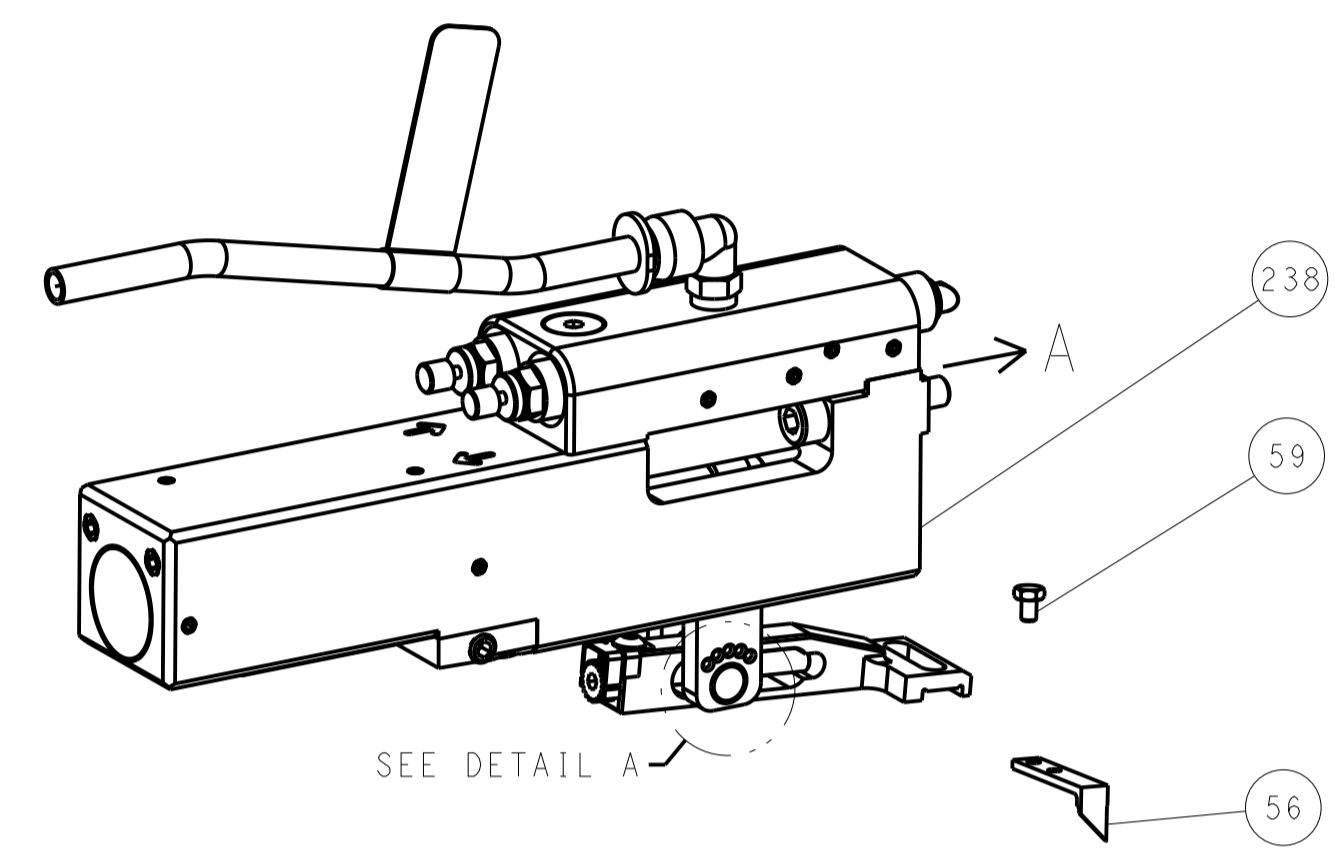
|                   |  |   |  |   |  |  |  |
|-------------------|--|---|--|---|--|--|--|
| DIMENSIONS:<br>mm |  | TOLERANCES UNLESS OTHERWISE SPECIFIED:<br>0 PLC ±<br>1 PLC ±<br>2 PLC ±<br>3 PLC ±<br>4 PLC ±<br>ANGLES ± |  | DRAWN: L. ZHANG 26 JUL 2012<br>CHK: L. ZHANG 26 JUL 2012<br>APPV: S. XI 26 JUL 2012 |  | TE Connectivity<br>Harrisburg, PA 17105-3608 |  |
| MATERIAL: -       |  | FINISH: -   |  | PRODUCT SPEC: -   |  | NAME: Ocean Side Feed Applicator             |  |
| SCALE: 1:2        |  | SHEET: 3 OF 4   |  | REV: K1   |  | RESTRICTED TO: -                             |  |

| LOC |    | DIST |     | REVISIONS   |      |     |      |
|-----|----|------|-----|-------------|------|-----|------|
| A   | 66 | P    | LTM | DESCRIPTION | DATE | DWN | APVD |
|     |    | -    |     | SEE SHEET 1 |      |     |      |

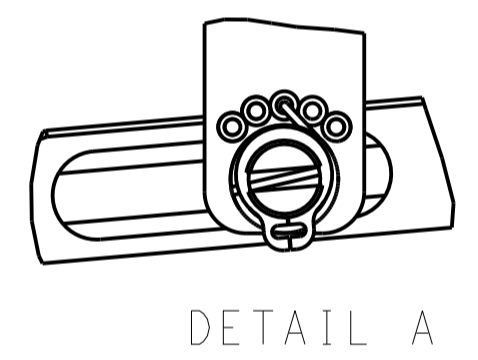
# FEED TYPE MECHANICAL



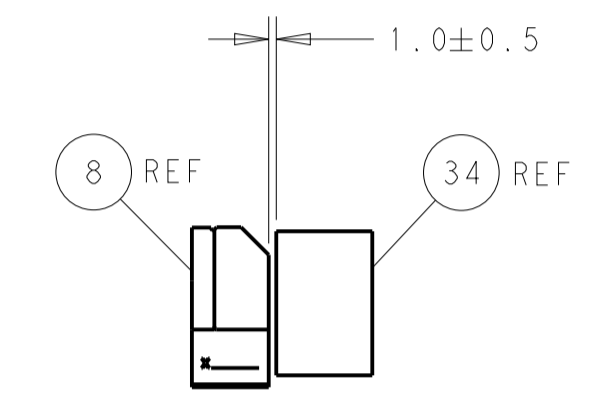
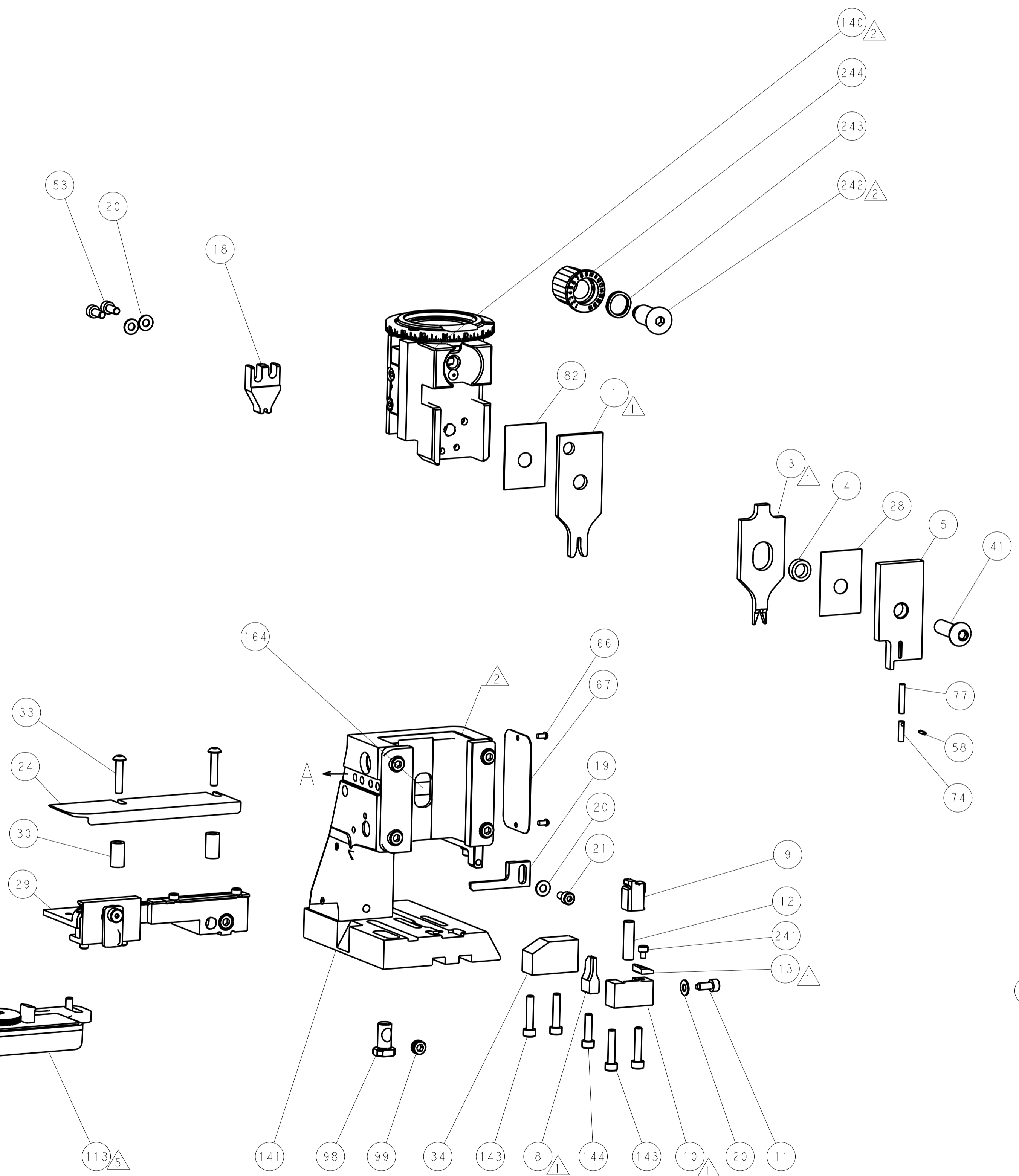
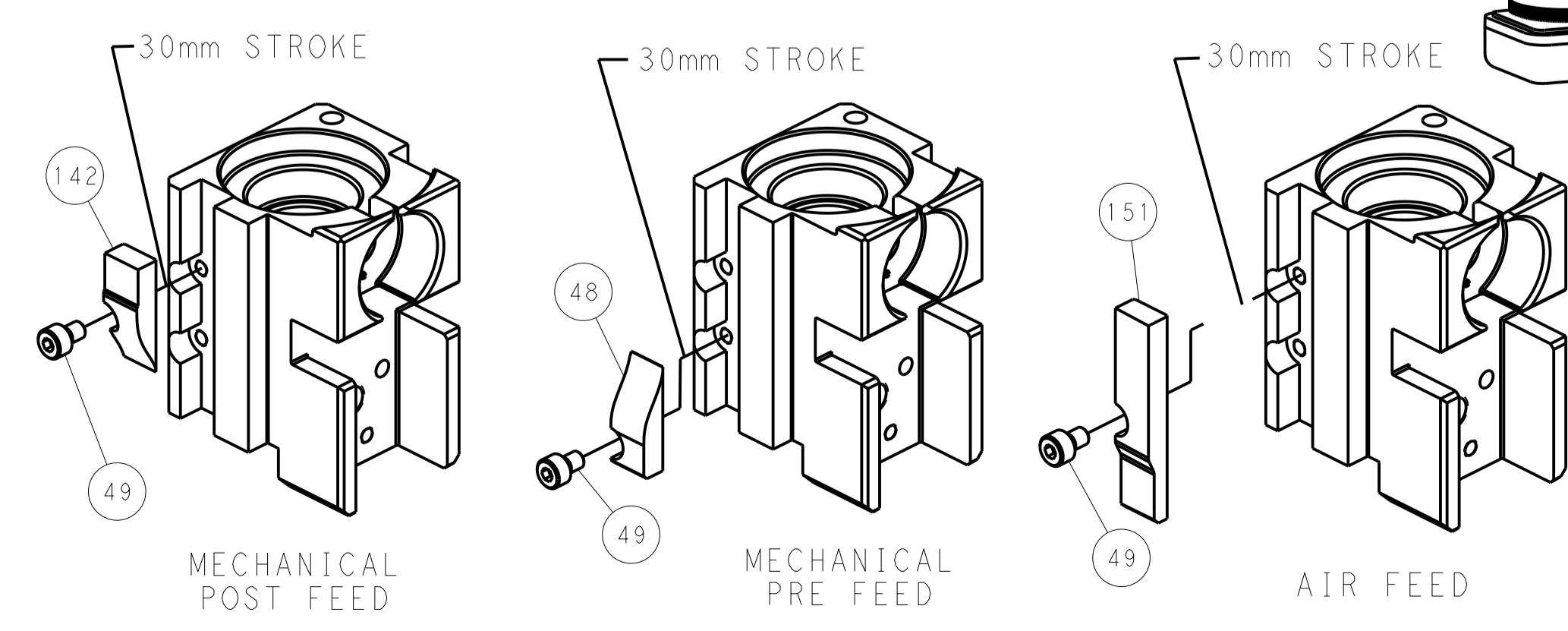
## PNEUMATIC



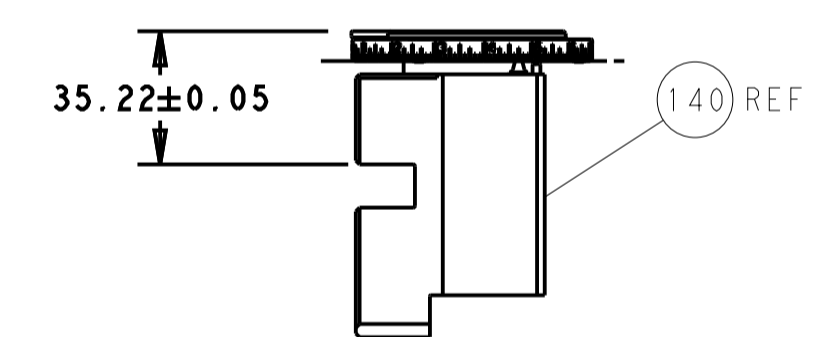
## FEED SPRING SETTING POSITION (SHOWN FROM REAR SIDE)



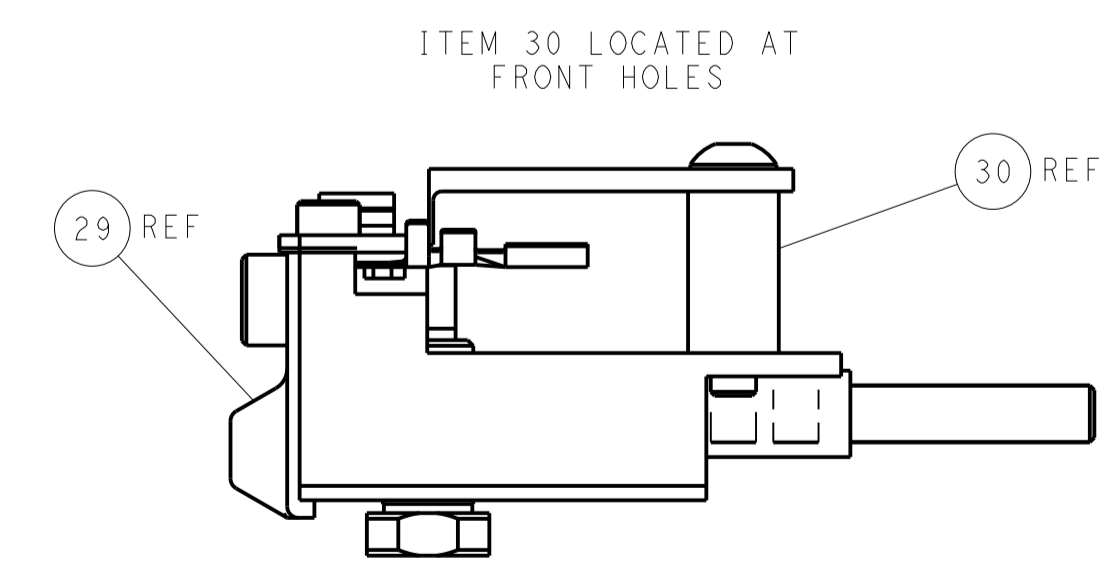
# CAM POSITIONS



TERMINAL SUPPORT LOCATION



RAM SET-UP



FEED TRACK POSITION GUIDE BY INSULATION BARREL

**PACIFIC VERSION**  
 Shown on sheets 3 of 4 & 4 of 4  
 (Atlantic version shown on sheets 1 of 4 & 2 of 4)

|             |         |  |         |                   |         |   |  |
|-------------|---------|--|---------|-------------------|---------|---|--|
| DIMENSIONS: |         | TOLERANCES UNLESS OTHERWISE SPECIFIED: |         | DWN 26 JUL 2012   |         | TE Connectivity                                   |  |
| mm          | 0 PLC ± | 1 PLC ±                                | 2 PLC ± | 3 PLC ±           | 4 PLC ± | Harrisburg, PA 17105-3608                         |  |
| MATERIAL:   |         | FINISH:                                |         | CHK 26 JUL 2012   |         | NAME  |  |
|             |         |  |         | S. XI 26 JUL 2012 |         | Ocean Side Feed Applier                           |  |
|             |         |  |         | APVD              |         | SIZE CAGE CODE DRAWING NO                         |  |
|             |         |  |         | S. XI             |         | A 00779 ©=2151353                                 |  |
|             |         |  |         | PRODUCT SPEC      |         | RESTRICTED TO                                     |  |
|             |         |  |         | APPLICATION SPEC  |         | Customer Accessible Production Drawing            |  |
|             |         |  |         | WEIGHT            |         | SCALE 1:2 SHEET 4 OF 4 REV K1                     |  |
|             |         |  |         | ANGLES            |         | SHEETS 1 & 2 ARE NOT REQUIRED FOR PACIFIC VERSION |  |

## X-ON Electronics

Largest Supplier of Electrical and Electronic Components

*Click to view similar products for [Crimpers / Crimping Tools](#) category:*

*Click to view products by [TE Connectivity](#) manufacturer:*

Other Similar products are found below :

[010-0096](#) [M225201-06](#) [M225202-37](#) [6-1579015-5](#) [622-6441LF](#) [M322](#) [6-304052-1](#) [63456-0054](#) [63484-3701](#) [63800-8355](#) [63819-1875](#)  
[63819-2875](#) [63819-4475](#) [63823-3475](#) [63827-5375](#) [64001-0975](#) [64001-4175](#) [64005-0175](#) [662903-2](#) [690602-6](#) [7-1579001-9](#) [7-23471-1](#)  
[762637-1](#) [808714-1](#) [811242-5](#) [999-50-020083](#) [1-21002-3](#) [1-21002-7](#) [12085270](#) [1-21002-6](#) [1-21113-6](#) [1-22548-4](#) [125442-1](#)  
[DCE.91.073.BVC](#) [DCE.91.090.3MVM](#) [DCE.91.130.5MVU](#) [DCE.91.202.BVCM](#) [1338300-1](#) [1-354003-0](#) [1338301-1](#) [DF62/RE-MD](#) [142321](#)  
[1456088-1](#) [1490794-1](#) [1-45804-6](#) [1490357-2](#) [1490357-3](#) [AX100749](#) [1-59619-7](#) [1596970-1](#)