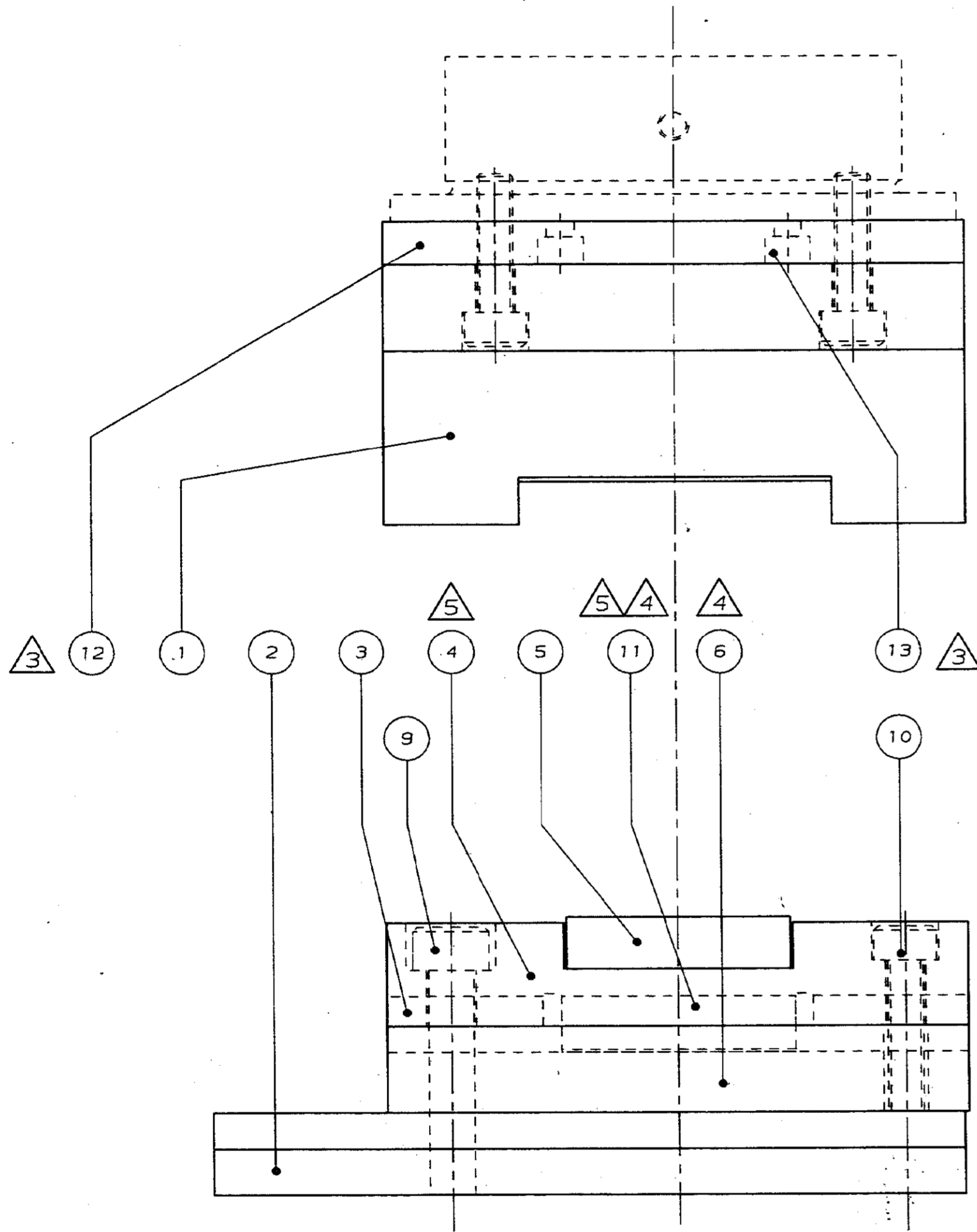


USED ON

SHOW PART NR. IN AREA MARKED X  
(INCLUDE DASH NR. & REVISION LTR.)

THIS INFORMATION IS CONFIDENTIAL AND IS DISCLOSED  
TO YOU ON CONDITION THAT NO FURTHER DISCLOSURE IS  
MADE BY YOU TO OTHER THAN AMP PERSONNEL WITHOUT  
WRITTEN AUTHORIZATION FROM AMP-HOLLAND B.V.

DIST



**NOTE:**

- △ 1 TOOL 733278-1 ONLY SUITABLE FOR USE UNDER "HBG" PRESSES, AND "MALE-ON-WIRE" MINI-MATCH CONNECTORS.  
THIS TOOL IS SUPERSEDED BY PN. 733278-2.
- △ 2 TOOL 733278-2 MAY BE USED UNDER AMP-PRESSES PN. 91085-2, 91112-3 AND GERMAN PRESS PN. 654173-2.  
THIS TOOL IS SUITABLE FOR BOTH "MALE-ON-WIRE" AND "PADDLE BOARD", MINI-MATCH CONNECTORS.
- △ 3 WITH INTRODUCTIN OF "SPACER TOOLHOLDER" (12) PN. 733900-1, PRESS MODIFICATIONS ARE NOT NEEDED.
- △ 4 PRESS FIT ITEM (11) INTO ITEM (6) WITH CHAMFERS DOWNWARDS.
- △ 5 ITEM (11) MUST BE SYMETRICAL WITHIN 0,03 TO SLOTTING DIM. 25,6 <sup>+0,02</sup> OF ITEM (4) WHEN ASSEMBLED.

△ 2	△ 1				
SUPERSEDED BY -2					
2	-	A4	1-21000-7	SCR SOC HD #4-40UNC	△ 3 13
1	-	A4	733900-1	SPACER TOOLHOLDER	△ 3 12
1	-	A4	733888-1	SUPPORT (PADDLE B. CONN.)	11
8	8	A4	1-18023-3	SOC. HD. CAP SCR. M4x16	10
4	4	A4	2-18023-4	SOC. HD. CAP SCR. M5x40	9
4	4	A4	18027-3	WASHER M5	8
4	4	A4	18029-3	NUT HEX M5	7
1	1	A3	733282-1	BASE PLATE	6
1	1	A4	733672-1	CABLE STOP	5
1	1	A2	733281-1	LOWERTOOL	4
1	1	A3	733535-1	WIRE-SUPPORT	3
1	1	A3	733536-1	SLIDE	2
1	1	A3	733279-1	UPPERTOOL	1
-2	-1	DWG SIZE	PART NO	DESCRIPTION	ITEM NO
		MATERIAL W.St. nr. 1 # *	HEAT TREAT #	FINISH #	
		DIMENSIONS IN MM		REQD. 1	
		± 0.2		ANGLES ± 0°30'	
		UNLESS .0 ± 0.1		REMOVE BURRS	✓
		OTHERWISE .00 ± 0.025		CAD ORIGINAL	
		SPECIFIED .000 ± 0.005		DO NOT CHANGE DWG	
<b>AMP</b> AMP-HOLLAND B.V. 's-Hertogenbosch, The Netherlands					
F	ADDED PART NO -2	NL-1155	AL	20-1-88	DR P. van Tongeren 1-7-86 FIRST USED ASSY 733280
E	UPDATED DWG.	ECN NL-1115	AL	31-8-87	
LTR	REVISION RECORD	APP	DATE	CHK	SHEET 1 OF 1
NAME	SUB-ASSY TOOL SET FOR Micro-Match connector		SCALE	LOC	SIZE NO
			2:1	H	A2
			733278		REV F

## X-ON Electronics

Largest Supplier of Electrical and Electronic Components

*Click to view similar products for [Hand Tools](#) category:*

*Click to view products by [TE Connectivity](#) manufacturer:*

Other Similar products are found below :

[568681-1](#) [576786-2](#) [58061-1](#) [58176-1](#) [58177-1](#) [58177-2](#) [58284-1](#) [59085](#) [0031](#) [59737-5](#) [015-0339-000](#) [015-8755-001](#) [600-146-06](#) [M15570-25](#) [62200-5709](#) [6-304052-1](#) [63443-1002](#) [63443-3513](#) [63443-4025](#) [63443-7114](#) [6-354778-5](#) [6-354779-2](#) [63600-2995](#) [63810-0105](#) [M8196914-08](#) [M819698-07](#) [662508-1](#) [662908-1](#) [679994-1](#) [679994-2](#) [68764-0001](#) [69001-0105](#) [69002-5525](#) [690124-7](#) [690191-1](#) [690191-4](#) [690696-1](#) [691409-4](#) [691667-1](#) [692006-2](#) [692655-7](#) [692776-1](#) [692776-4](#) [693077-3](#) [693077-4](#) [693597-1](#) [D20418-137](#) [D20419-189](#) [ESR-17x17](#) [ET-LY10](#)