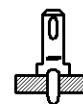
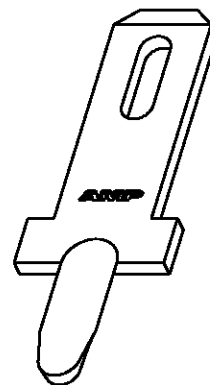
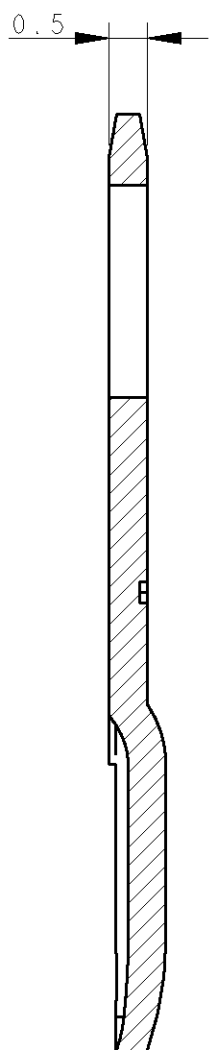
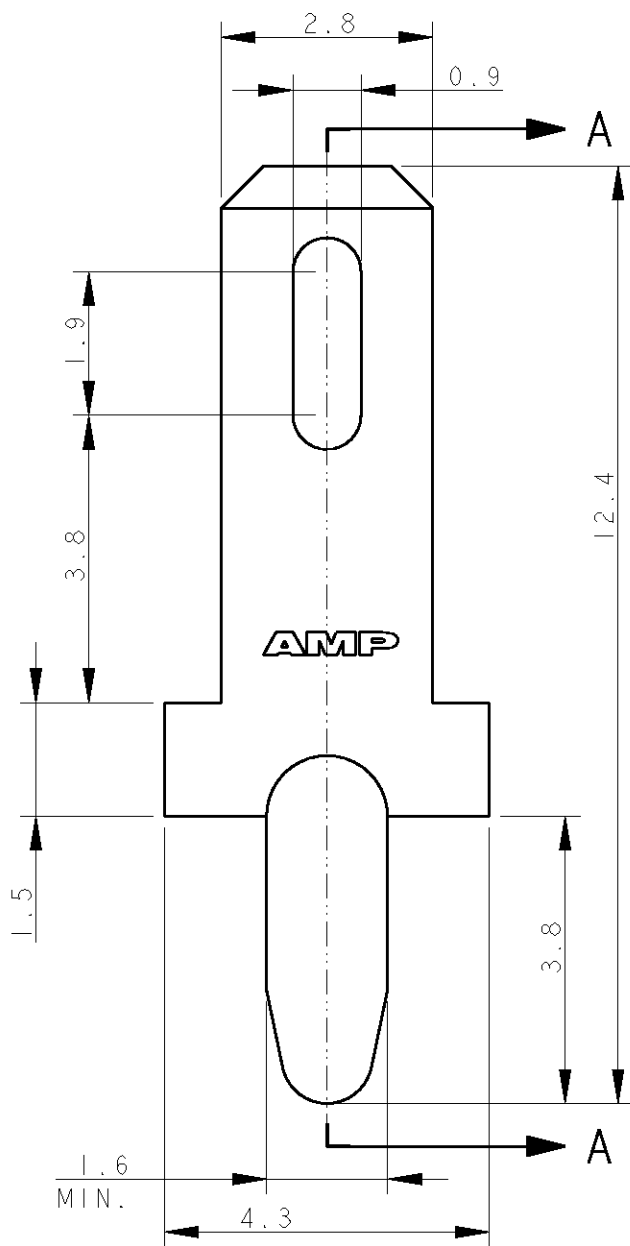


LOC	DIST	REVISIONS			
P	LTR	DESCRIPTION	DATE	DWN	APVD
		D1	REDRAWN	03AUG2006	HY GT
		D2	ADDED SECTION AA	04AUG2006	HY GT



APPLICATION MODE
SCALE 1:1

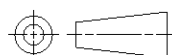
SECTION A - A

TIN PLATED	BRASS	735187-5
TIN PLATED		735187-4
SILVER PLATED		735187-3
TIN PLATED		735187-2
PLAIN		735187-1
FINISH	MATERIAL	TE P/N

TO BE FIXED INTO
1.40 +/- 0.05 Ø HOLE
OF THE PRINTED CIRCUIT BOARD.

THIS DRAWING IS UNPUBLISHED. BY TYCO ELECTRONICS CORPORATION. ALL RIGHTS RESERVED. COPYRIGHT 20

DIMENSIONS:	DWN	03AUG2006	MATERIAL	FINISH
mm	H. YAALI		-	-
TOLERANCES UNLESS OTHERWISE SPECIFIED:	CHK	03AUG2006	Tyco Electronics AMP Italia S.p.A. C.so F.lli Cervi, 15 COLLEGNO (TO)	
	H. YAALI			
0 PLC ±-	APVD	03AUG2006	NAME 2.8 MM TAB FOR PC BOARD	
1 PLC ±0.2	G. TURCO			
2 PLC ±0.13	PRODUCT SPEC	-	SIZE CAGE CODE DRAWING NO RESTRICTED TO	
3 PLC ±0.013	APPLICATION SPEC	-		
4 PLC ±0.0001	WEIGHT	-	SCALE 10:1 SHEET 1 OF 1 REV D2	
ANGLES ±-	CUSTOMER DRAWING			



X-ON Electronics

Largest Supplier of Electrical and Electronic Components

Click to view similar products for [Terminals](#) category:

Click to view products by [TE Connectivity](#) manufacturer:

Other Similar products are found below :

[HT-13-10](#) [71M-250-32-NB](#) [01-2065-1-0216](#) [00581P0075](#) [M10-10RX](#) [M10BCK](#) [60205-1](#) [604200-1](#) [60598-1-CUT-TAPE](#) [60617-1-C](#) [60873-1](#) [M14-516R/SK](#) [M14-6RSX](#) [M18-10FLX](#) [M18-8FBX](#) [M18-8R/LX](#) [M18BCK](#) [61314-6-C](#) [61-S](#) [61-SN-A](#) [62-NBM-A](#) [63-S](#) [640179-1](#) [640917-2-CUT-TAPE](#) [6501550002](#) [66107-2-C](#) [66107-4-C](#) [696683-1](#) [696834-1](#) [696861-1](#) [696931-1](#) [696999-1](#) [M8-516RK](#) [M86700006](#) [MA250DMFMX-A](#) [701-2007](#) [701-2307](#) [701-7761-03](#) [70F-110-32-PB](#) [718-N-A](#) [71M-187-20-NBL](#) [71M-250-32-NBL](#) [72F-187-20-NBL](#) [72M-250-32-NBL](#) [7310](#) [73F-250-32](#) [73F-250-32-NBL](#) [73F-250-32-NL](#) [F-1M](#) [751-250](#)