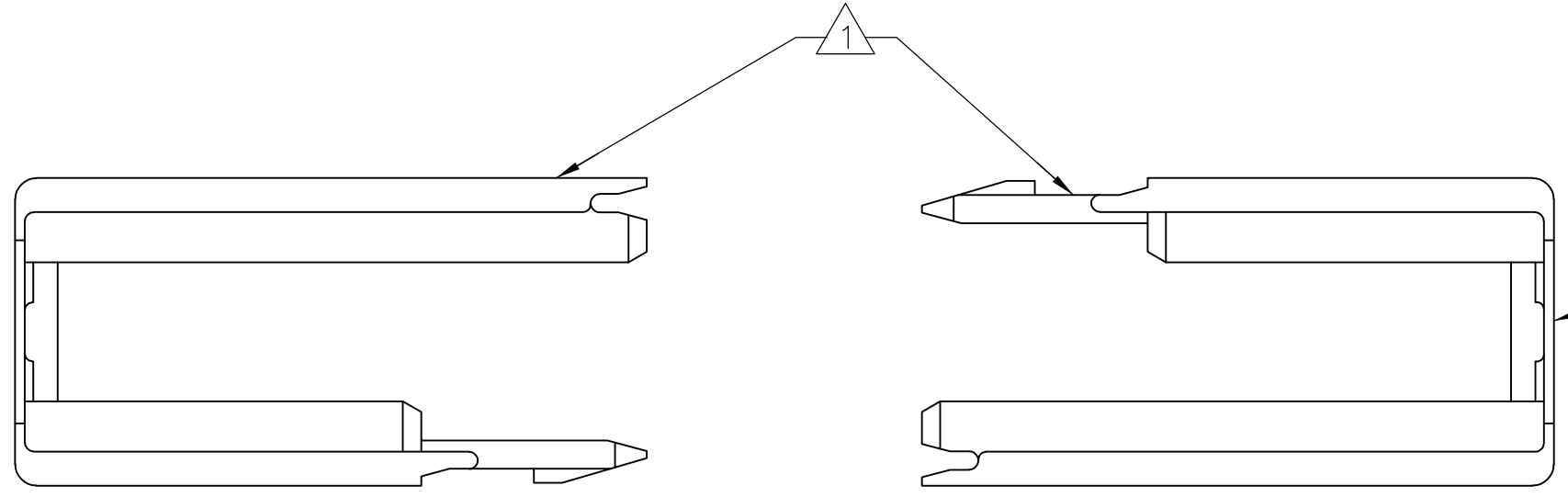
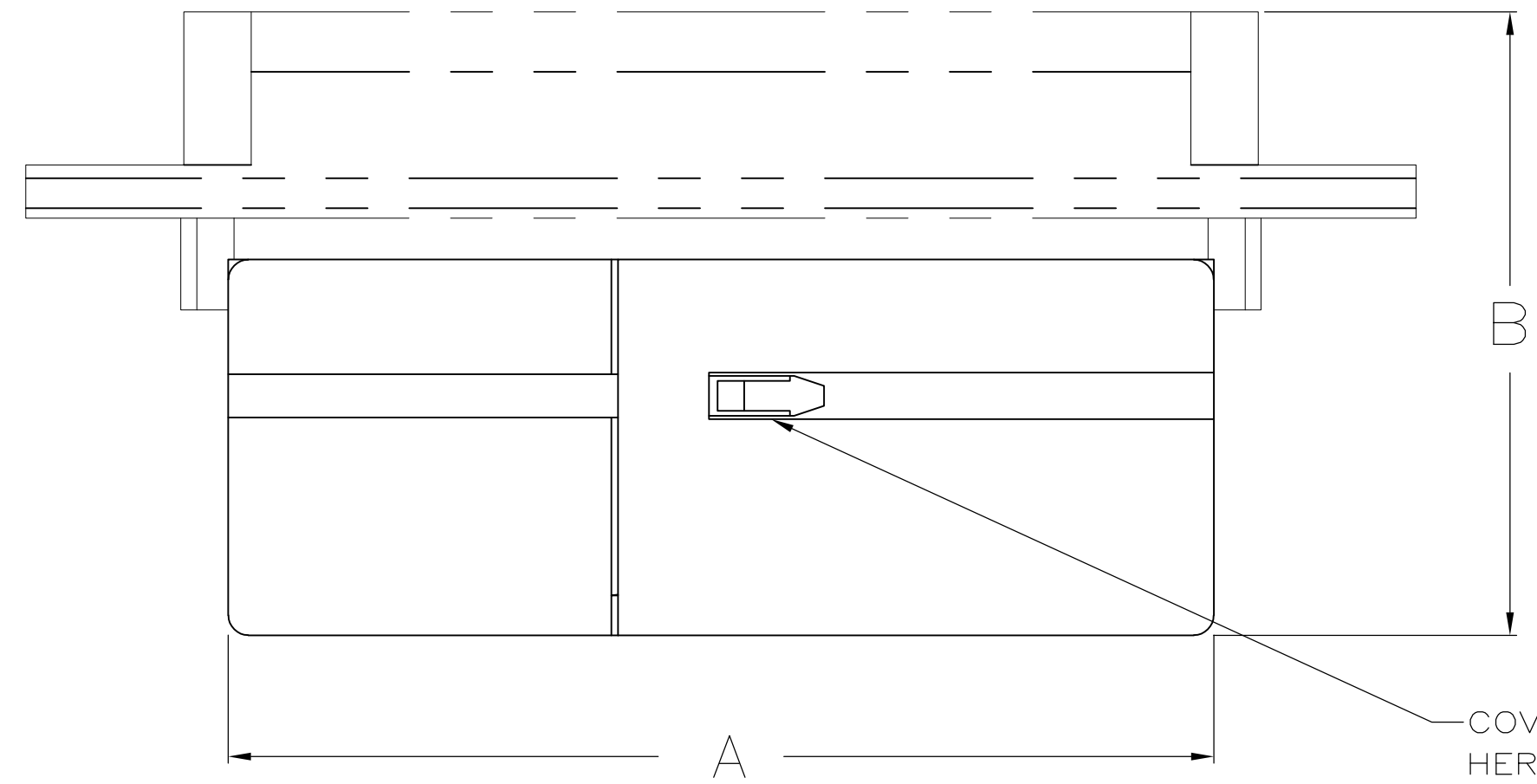


THIS DRAWING IS UNPUBLISHED. RELEASED FOR PUBLICATION
 © COPYRIGHT - By - ALL RIGHTS RESERVED.

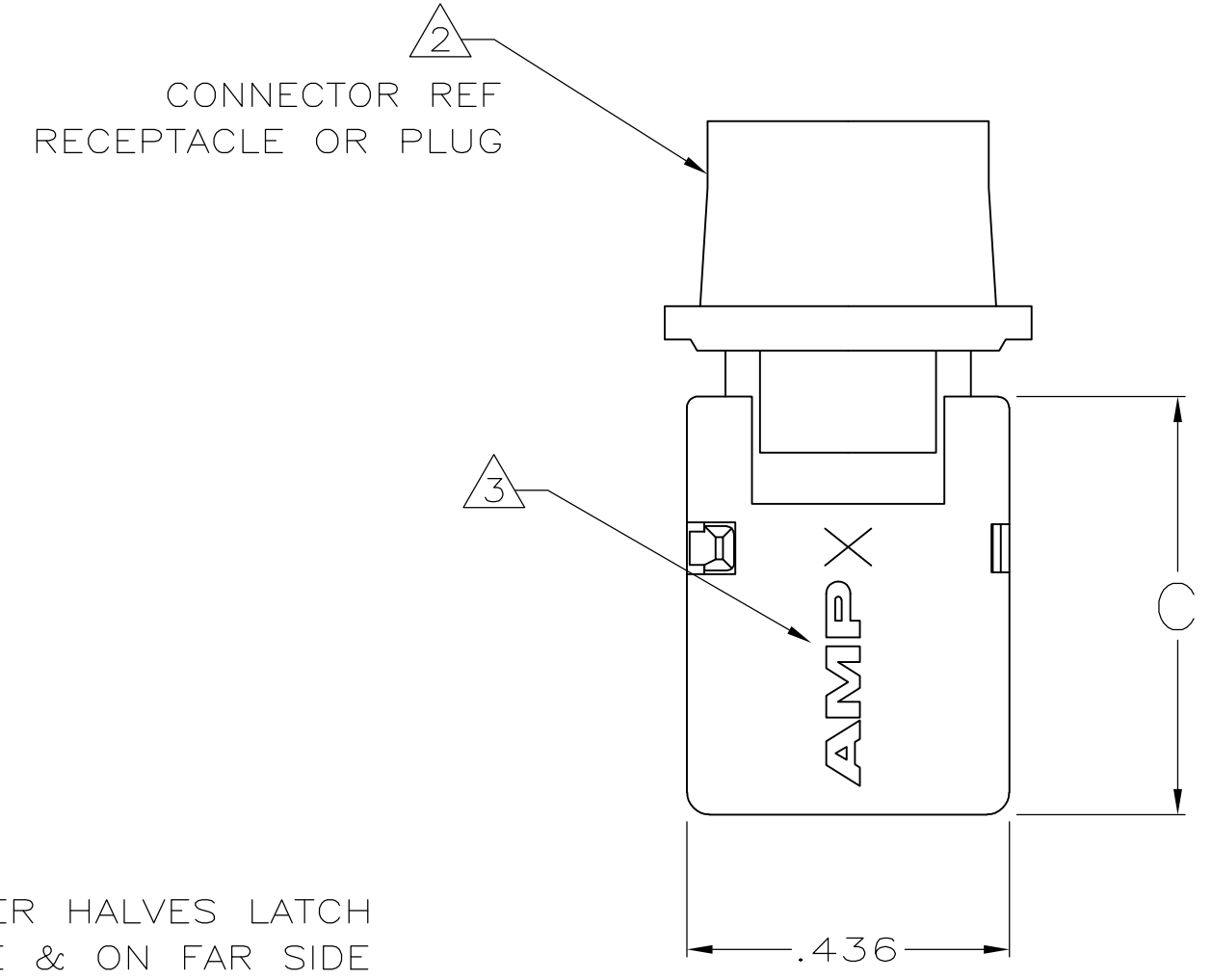
LOC		DIST		REVISIONS			
GP	00	P	LTR	DESCRIPTION	DATE	DWN	APVD
		F		REVISED PER ECO-15-011835	08OCT2015	AP	DG



EACH KIT CONSISTS OF 2 IDENTICAL HALVES, WHICH SNAP TOGETHER OVER CONNECTOR.



COVER HALVES LATCH HERE & ON FAR SIDE



CONNECTOR REF RECEPTACLE OR PLUG

- ① PARTS TO BE PACKAGED UNASSEMBLED.
- ② BACK COVER FITS HDE-20 TYPE CONNECTORS, BOTH ALL-PLASTIC & METAL SHELL ASSEMBLIES.
- ③ "AMP" AND SIZE NUMBER MOLDED.
- ④ THERMOPLASTIC, UNFILLED, 94V-1 RATED, BLACK.
- ⑤ OBSOLETE

OBSOLETE

.565	SPECIAL		.934	2	15	1-745530-0	
.540	RCPT	PLUG	2.134	4	37	⑤ 745530-8	745530-4
.565			1.482	3	25	⑤ 745530-7	745530-3
.565	.902	.937	.934	2	15	⑤ 745530-6	745530-2
.565			.610	1	9	⑤ 745530-5	745530-1
C	B		A	SIZE	POSN	BULK PACKED KIT NO	INDIVIDUAL KIT NO

THIS DRAWING IS A CONTROLLED DOCUMENT.

DWN	J.GALLUCCI	BG	14 MAY 90
CHK	J.E.WESTMAN		9 JUL 95
APVD	J.ASSINI		16 JUL 90

TE Connectivity

NAME: KIT, BACK COVER, LOW PROFILE, SLIDE-ON, AMPLIMITE™ HDE-20

SIZE	A2	CAGE CODE	00779	DRAWING NO	C=745530	RESTRICTED TO	-
SCALE	4:1	SHEET	1 of 1	REV	F		

CUSTOMER DRAWING

X-ON Electronics

Largest Supplier of Electrical and Electronic Components

Click to view similar products for [D-Sub Backshells](#) category:

Click to view products by [TE Connectivity](#) manufacturer:

Other Similar products are found below :

[600X54009X](#) [M85049/6-38N](#) [M85049/86-12N03](#) [M85049/90-13P03](#) [70.350.0636.4](#) [70.350.2435.1](#) [72.350.1035.2](#) [72.352.2435.1](#)
[73.359.4035.3](#) [829472-1](#) [PCS-E20W](#) [970-015-040R011](#) [971-009-030R121](#) [971-009-040R011](#) [971-015-040R011](#) [DPH-B-003](#) [1437013-9](#)
[1484402-8](#) [156-3025-EX](#) [16-500800](#) [165X02659X](#) [165X03329A](#) [165X03399A](#) [165X10259X](#) [165X11759X](#) [165X11889X](#) [165X11899X](#)
[165X13019X](#) [165X13029X](#) [165X13169X](#) [165X13199X](#) [165X13239X](#) [165X13389X](#) [165X13489X](#) [165X14219X](#) [165X14429X](#)
[165X14449X](#) [165X17409X](#) [165X17439X](#) [165X17569X](#) [165X17599X](#) [165X17609X](#) [165X17889X](#) [165X17979X](#) [L171373](#) [971-025-](#)
[030R121](#) [300X10989X](#) [165X02609X](#) [165X02639X](#) [165X02689X](#)