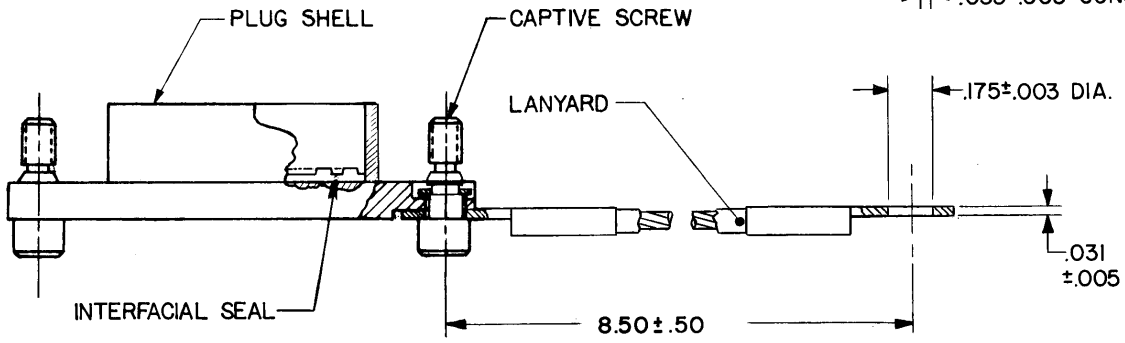
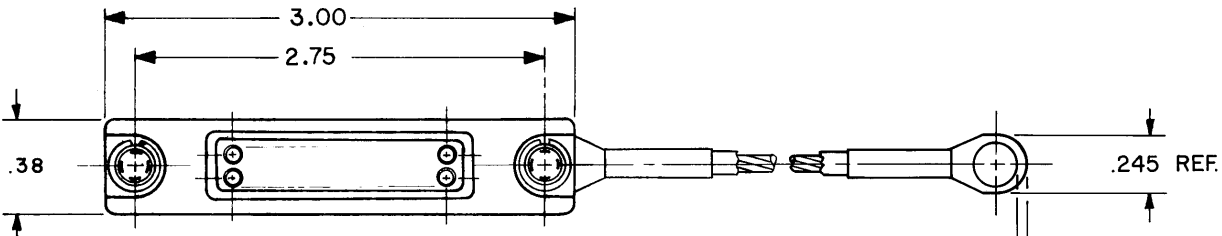
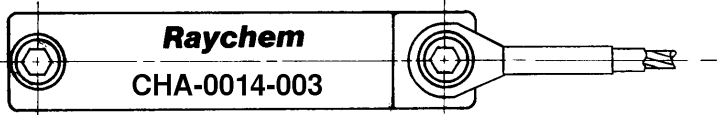


REVISIONS			
LTR	DESCRIPTION	DATE	APPROVED
N/C	INITIAL RELEASE PER DCR# T-30073	9/25/2001	M.HIGGY



NOTES:

- SEALING:
PROTECTIVE CAP DESIGNED TO ENVIRONMENTALLY SEAL THE MATING RECEPTACLE CONNECTOR, 2" MTC 100 SERIES WITH SOCKET CONTACTS.
- MATERIALS AND FINISHES:
PLUG SHELL: ALUMINUM ALLOY PER QQ-A-591
CADMIUM PLATED PER QQ-P-416
OVER NICKEL UNDERPLATE
INTERFACIAL SEAL:
SILICONE ELASTOMER PER MIL-R-25988
LANYARD: STAINLESS STEEL
CADMIUM PLATED PER-QQ-P-416
CAPTIVE SCREW: STAINLESS STEEL PER
QQ-S-763, 300 SERIES
CADMIUM PLATED PER-QQ-P-416



SPECIFICATION CONTROL DRAWING

UNLESS OTHERWISE SPECIFIED DIMENSIONS ARE IN INCHES AND TOLERANCES ARE: .XXX : ± .010 .XX : ± .015 — : ± .020	DRAWN	ZSOFIA O. 9/25/2001	TYCO/ELECTRONICS/RAYCHEM		WIRE AND HARNESSING PRODUCTS 307 CONSTITUTION DRIVE MENLO PARK, CALIFORNIA 94025	
	CHECKED		TITLE			
	APPROVED	M.HIGGY. 9/25/2001	PROTECTIVE CAP, PLUG WITH PIN INSERT, CADMIUM PLATED 2-INCH MTC 100 SERIES			
	MATERIAL	APPROVED		SIZE	CODE IDENT.	DWG. NO.
FINISH	APPROVED		B	NO. 06090	CHA-0014-003	
	CAD FILE:	T30073.tif	SCALE	WEIGHT	SHEET OF	
	RPN:	757110				

X-ON Electronics

Largest Supplier of Electrical and Electronic Components

Click to view similar products for [Headers & Wire Housings](#) category:

Click to view products by [TE Connectivity](#) manufacturer:

Other Similar products are found below :

[95000-104TRLF](#) [10135584-644402LF](#) [DF62W-EP2022PCA](#) [95000-106TRLF](#) [DF62W-2022SCA](#) [DF62W-EP2022PC](#) [2203348](#) [DF62W-2022SC](#) [1084018](#) [1029039](#) [1084017](#) [802-10-012-10-002000](#) [1112640](#) [1112639](#) [000-34000](#) [0009482033](#) [0009507031](#) [57102-S06-03LF](#) [57202-S52-04LF](#) [PCN6-15S-2.5E](#) [0039019024](#) [58102-G61-06LF](#) [582553-1](#) [0009485154](#) [0009508121](#) [0022285053](#) [0050291907](#) [018731A](#) [LY20-4P-DT1-P1E-BR](#) [02.125.8002.8](#) [60101931](#) [60598-1 \(Cut Strip\)](#) [M1625-3R/100](#) [61062-3](#) [61082-181009](#) [636-1427](#) [638009-1](#) [641938-9](#) [641991-4](#) [644168-1](#) [647662-1](#) [65039-019ELF](#) [65817-002LF](#) [65817-015LF](#) [65863-015LF](#) [66207-023LF](#) [67016-026LF](#) [67046-001LF](#) [67095-007LF](#) [67230-005LF](#)