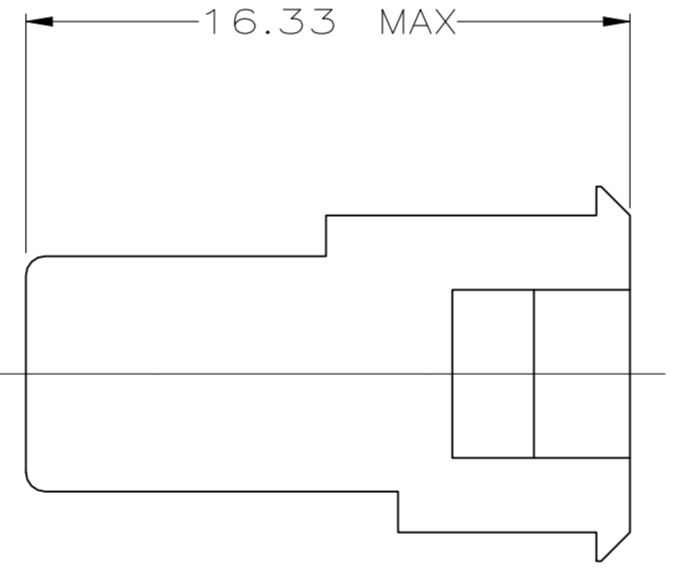
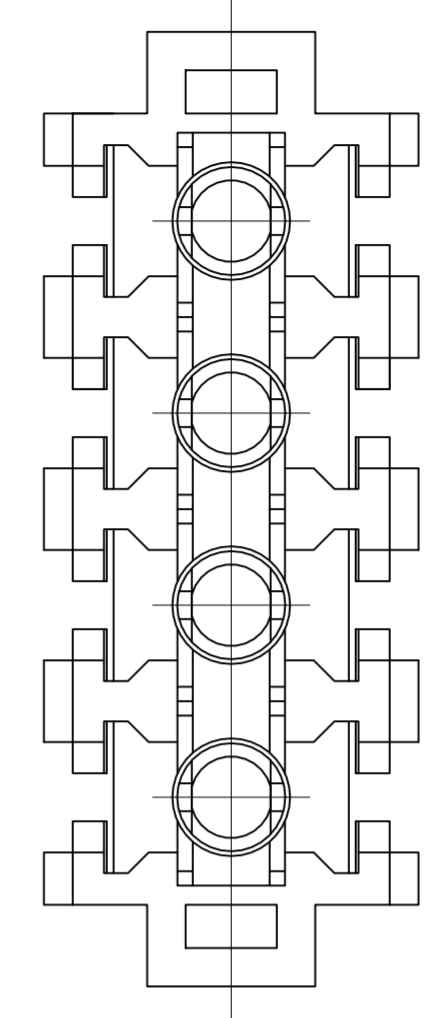
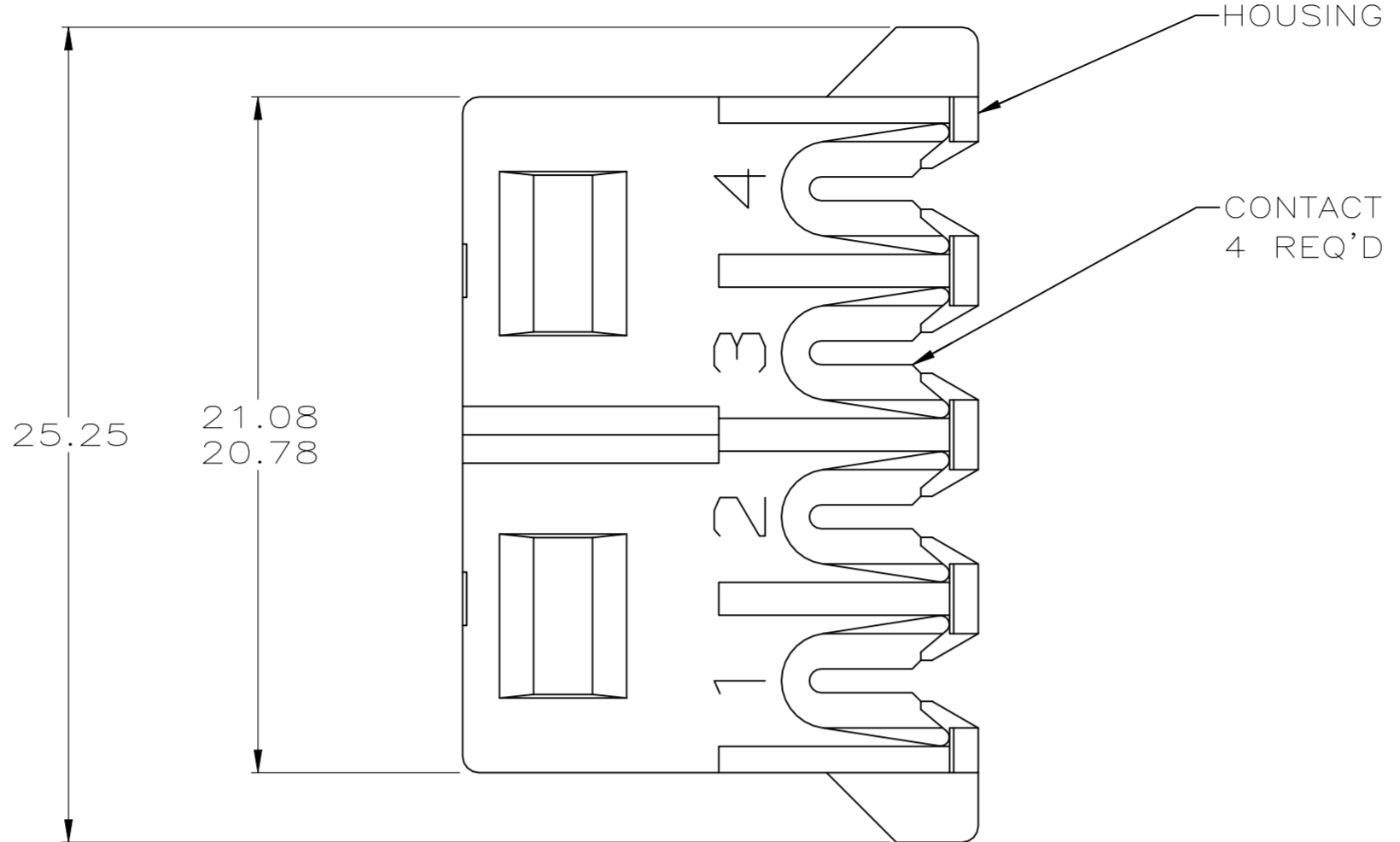
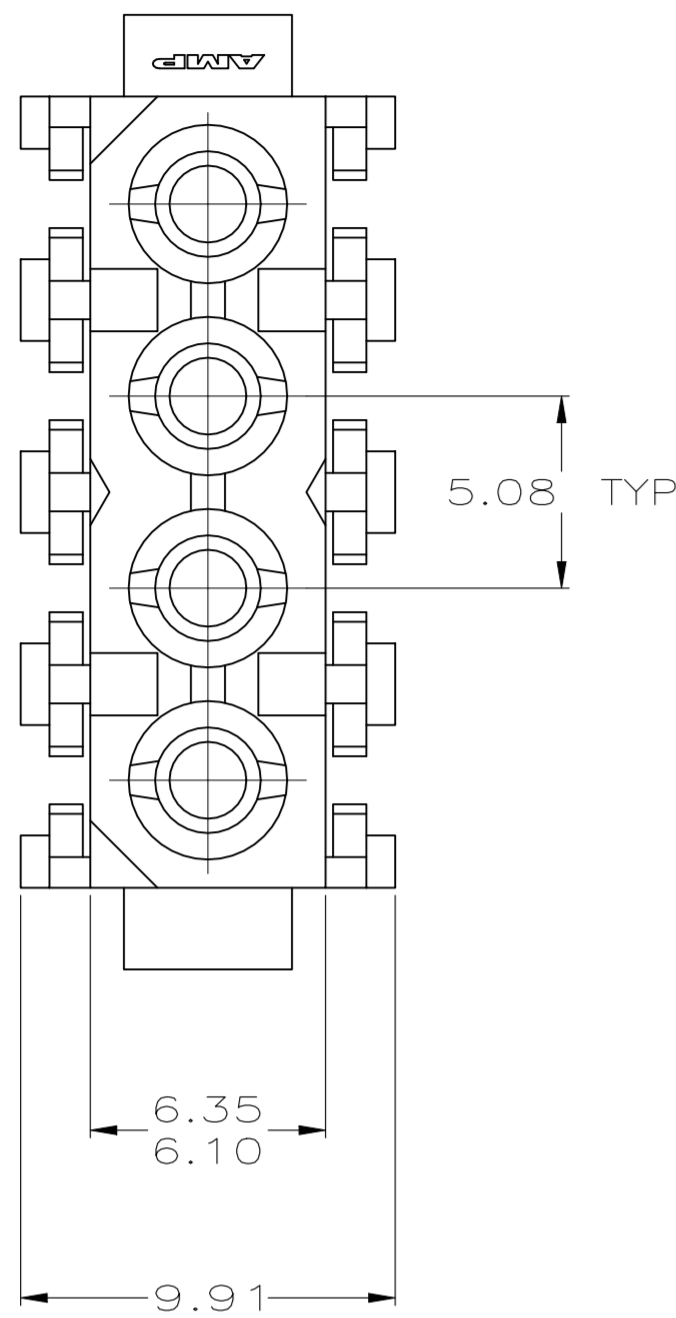


THIS DRAWING IS UNPUBLISHED. RELEASED FOR PUBLICATION
 © COPYRIGHT - By - ALL RIGHTS RESERVED.

| LOC | | DIST | | REVISIONS | | | |
|-----|-----|-------------|---------------------------|-----------|-----------|------|----|
| P | LTR | DESCRIPTION | | DATE | DWN | APVD | |
| CM | 0 | F2 | REVISED PER ECR-21-117185 | | 22OCT2021 | PJ | VS |

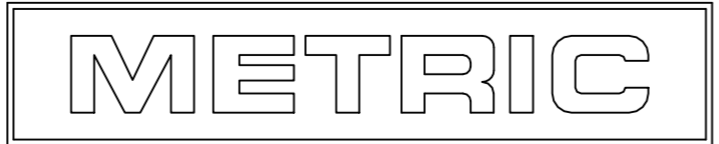


- NOTE DELETED.
- INSULATION DIAMETER 2.41[.095] MAX.
- DIMENSION SHOWN REPRESENT PRODUCT IN DRY CONDITION. ADDITIONAL 2% GROWTH DUE TO END USE LOCATION MOISTURE ABSORPTION MAY OCCUR AND SHOULD BE ACCOUNTED FOR.

| COLOR | WIRE SIZE | CONTACT MATERIAL AND FINISH | HOUSING MATERIAL | PART NO |
|--------|-------------------------------|-----------------------------|------------------|----------|
| BLUE | 1.25 mm ² (16 AWG) | PHOS BRONZE, TIN | NYLON,UL 94V-2 | 770156-5 |
| YELLOW | 0.5 mm ² (20 AWG) | PHOS BRONZE, TIN | NYLON,UL 94V-2 | 770156-4 |
| ORANGE | 0.8 mm ² (18 AWG) | PHOS BRONZE, TIN | NYLON,UL 94V-2 | 770156-3 |
| RED | 0.3 mm ² (22 AWG) | PHOS BRONZE, TIN | NYLON,UL 94V-2 | 770156-2 |

| MM | IN | MM | IN |
|------|------|-------|------|
| 9.91 | .390 | - | - |
| 6.35 | .250 | 25.25 | .994 |
| 6.10 | .240 | 21.08 | .830 |
| 5.08 | .200 | 20.78 | .818 |
| 0.13 | .005 | 16.33 | .643 |

CONVERSION TABLE



THIS DRAWING IS A CONTROLLED DOCUMENT.

| | | | |
|---------------------|--|---|--|
| DIMENSIONS: mm | TOLERANCES UNLESS OTHERWISE SPECIFIED: | DWN: K. WHITAKER 2-10-94 | |
| | 0 PLC ± - 1 PLC ± - 2 PLC ± 0.13 3 PLC ± - 4 PLC ± - ANGLES ± - | CHK: R. SWING 2-10-94 APVD: - PRODUCT SPEC: - APPLICATION SPEC: - WEIGHT: - | |
| MATERIAL: SEE TABLE | FINISH: SEE TABLE | NAME: PLUG ASSEMBLY, INSULATION DISPLACEMENT, COMMERCIAL MATE-N-LOK(TM) SIZE: A2 CAGE CODE: 00779 DRAWING NO: C-770156 RESTRICTED TO: - CUSTOMER DRAWING SCALE: 5:1 SHEET: 1 of 1 REV: F2 | |

X-ON Electronics

Largest Supplier of Electrical and Electronic Components

Click to view similar products for [Pin & Socket Connectors](#) category:

Click to view products by [TE Connectivity](#) manufacturer:

Other Similar products are found below :

[6450822-1](#) [770392-1](#) [794042-1](#) [796885-1](#) [8-794535-1](#) [PLR3455ACS-222](#) [R929991004](#) [R929993003](#) [1403611-1](#) [1-480349-5](#) [152302-5](#)
[153211-2](#) [1586092-1](#) [1586129-1](#) [1586681-4](#) [1586700-1](#) [1586368-1](#) [1586380-1](#) [1586616-1](#) [1586680-5](#) [16-06-0038](#) [164164-5](#) [1-6609930-1](#)
[172296-1](#) [19-09-2035](#) [200503-1](#) [200788-2](#) [2029090-4](#) [2029095-4](#) [925061-7](#) [293734-4](#) [293737-2](#) [1-765362-4](#) [1871534-1](#) [200833-4](#)
[2008625-2](#) [2029027-2](#) [2029096-4](#) [R929991000](#) [R929991002](#) [R929993000](#) [319-10-101-00-005000](#) [319-10-102-00-001000](#) [319-10-104-00-001000](#) [319-10-105-00-001000](#) [319-10-108-00-001000](#) [319-10-112-00-006000](#) [39-01-8019](#) [319-10-101-00-001000](#) [319-10-102-00-005000](#)