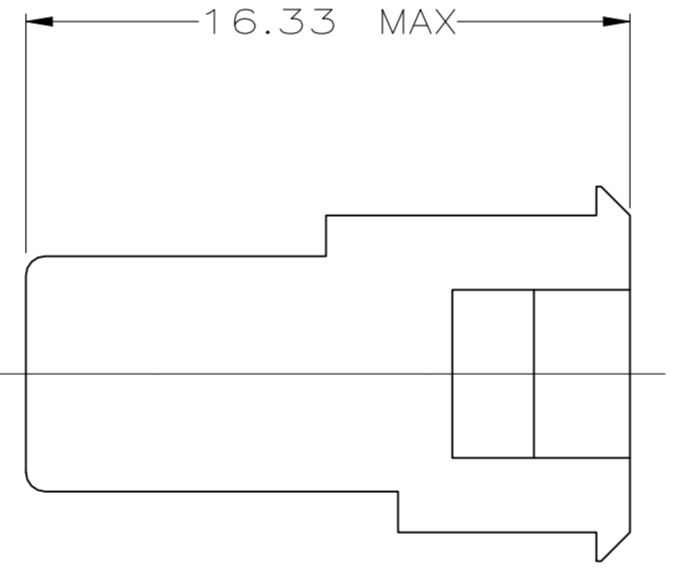
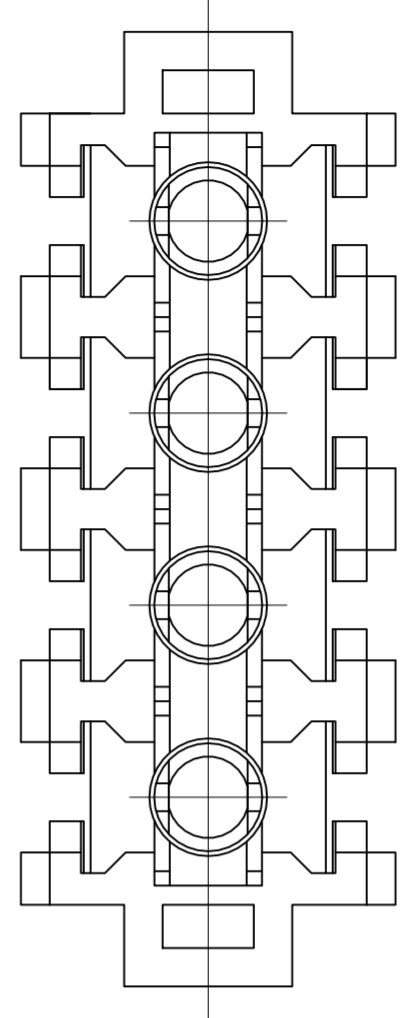
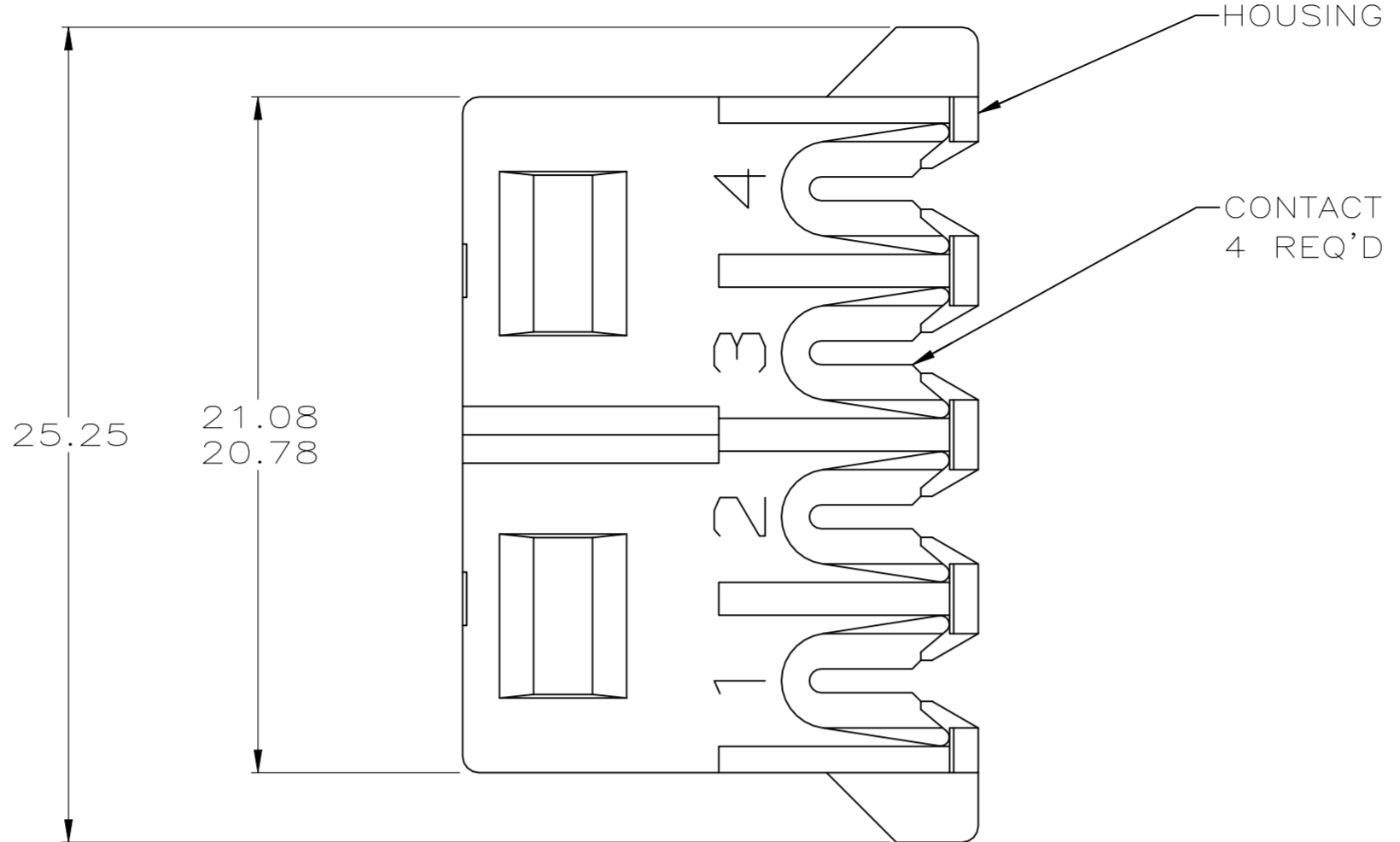
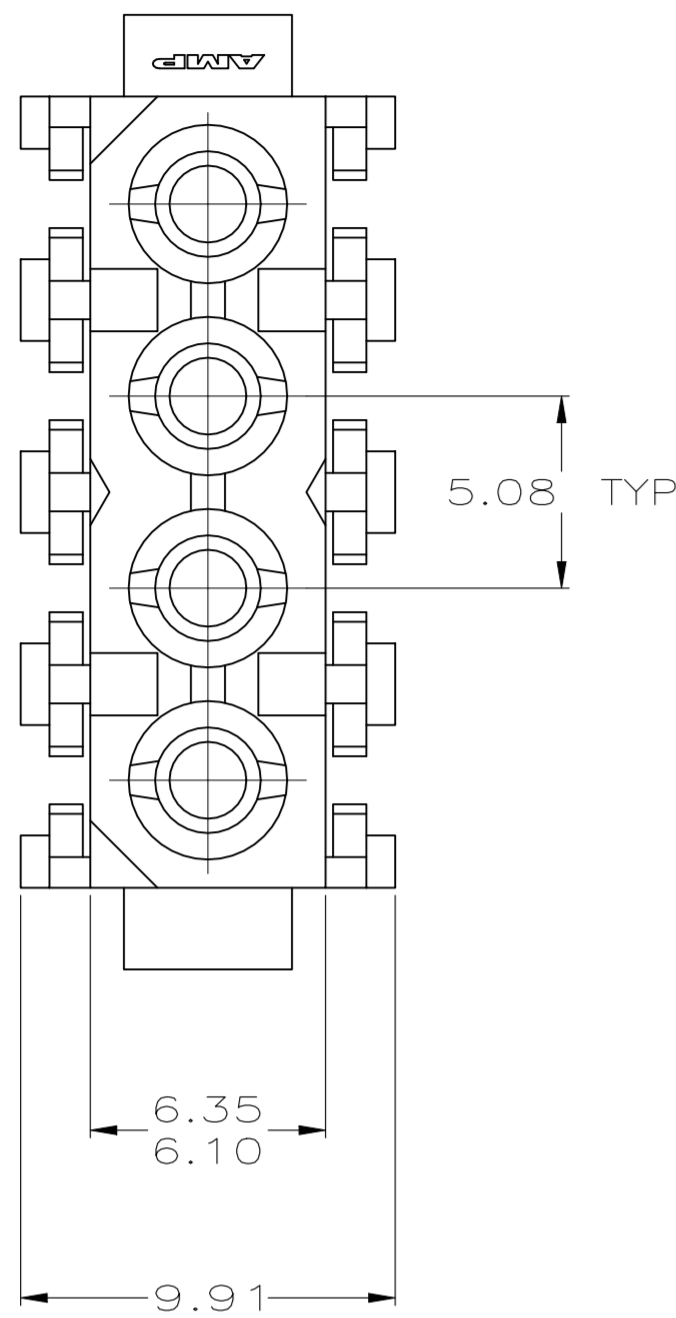


THIS DRAWING IS UNPUBLISHED. RELEASED FOR PUBLICATION
 © COPYRIGHT - By - ALL RIGHTS RESERVED.

LOC		DIST		REVISIONS			
P	LTR	DESCRIPTION		DATE	DWN	APVD	
CM	0	F2	REVISED PER ECR-21-117185		22OCT2021	PJ	VS

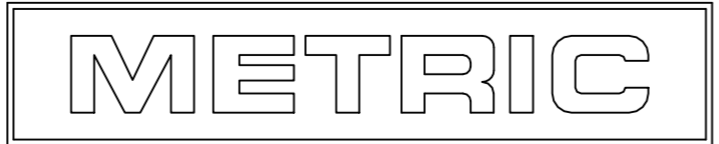


- ⚠ NOTE DELETED.
- 2. INSULATION DIAMETER 2.41[.095] MAX.
- 3. DIMENSION SHOWN REPRESENT PRODUCT IN DRY CONDITION. ADDITIONAL 2% GROWTH DUE TO END USE LOCATION MOISTURE ABSORPTION MAY OCCUR AND SHOULD BE ACCOUNTED FOR.

BLUE	1.25 mm ² (16 AWG)	PHOS BRONZE, TIN	NYLON,UL 94V-2	770156-5
YELLOW	0.5 mm ² (20 AWG)	PHOS BRONZE, TIN	NYLON,UL 94V-2	770156-4
ORANGE	0.8 mm ² (18 AWG)	PHOS BRONZE, TIN	NYLON,UL 94V-2	770156-3
RED	0.3 mm ² (22 AWG)	PHOS BRONZE, TIN	NYLON,UL 94V-2	770156-2
COLOR ⚠	WIRE SIZE	CONTACT MATERIAL AND FINISH	HOUSING MATERIAL	PART NO

MM	IN	MM	IN
9.91	.390	-	-
6.35	.250	25.25	.994
6.10	.240	21.08	.830
5.08	.200	20.78	.818
0.13	.005	16.33	.643

CONVERSION TABLE



THIS DRAWING IS A CONTROLLED DOCUMENT.

DIMENSIONS: mm	TOLERANCES UNLESS OTHERWISE SPECIFIED:	DWN: K. WHITAKER 2-10-94	
	0 PLC ± - 1 PLC ± - 2 PLC ± 0.13 3 PLC ± - 4 PLC ± - ANGLES ± -	CHK: R. SWING 2-10-94 APVD: - PRODUCT SPEC: - APPLICATION SPEC: - WEIGHT: -	
MATERIAL: SEE TABLE	FINISH: SEE TABLE	NAME: PLUG ASSEMBLY, INSULATION DISPLACEMENT, COMMERCIAL MATE-N-LOK(TM) SIZE: A2 CAGE CODE: 00779 DRAWING NO: C-770156 RESTRICTED TO: - CUSTOMER DRAWING SCALE: 5:1 SHEET: 1 of 1 REV: F2	

X-ON Electronics

Largest Supplier of Electrical and Electronic Components

Click to view similar products for [Pin & Socket Connectors](#) category:

Click to view products by [TE Connectivity](#) manufacturer:

Other Similar products are found below :

[6450822-1](#) [770392-1](#) [794042-1](#) [796885-1](#) [8-794535-1](#) [PLR3455ACS-222](#) [R929991004](#) [R929993003](#) [1403611-1](#) [1-480349-5](#) [152302-5](#)
[153211-2](#) [1586092-1](#) [1586129-1](#) [1586681-4](#) [1586700-1](#) [1586368-1](#) [1586380-1](#) [1586616-1](#) [1586680-5](#) [16-06-0038](#) [164164-5](#) [1-6609930-1](#)
[172296-1](#) [19-09-2035](#) [200503-1](#) [200788-2](#) [2029090-4](#) [2029095-4](#) [925061-7](#) [293734-4](#) [293737-2](#) [1-765362-4](#) [1871534-1](#) [200833-4](#)
[2008625-2](#) [2029027-2](#) [2029096-4](#) [R929991000](#) [R929991002](#) [R929993000](#) [319-10-101-00-005000](#) [319-10-102-00-001000](#) [319-10-104-00-001000](#) [319-10-105-00-001000](#) [319-10-108-00-001000](#) [319-10-112-00-006000](#) [39-01-8019](#) [319-10-101-00-001000](#) [319-10-102-00-005000](#)