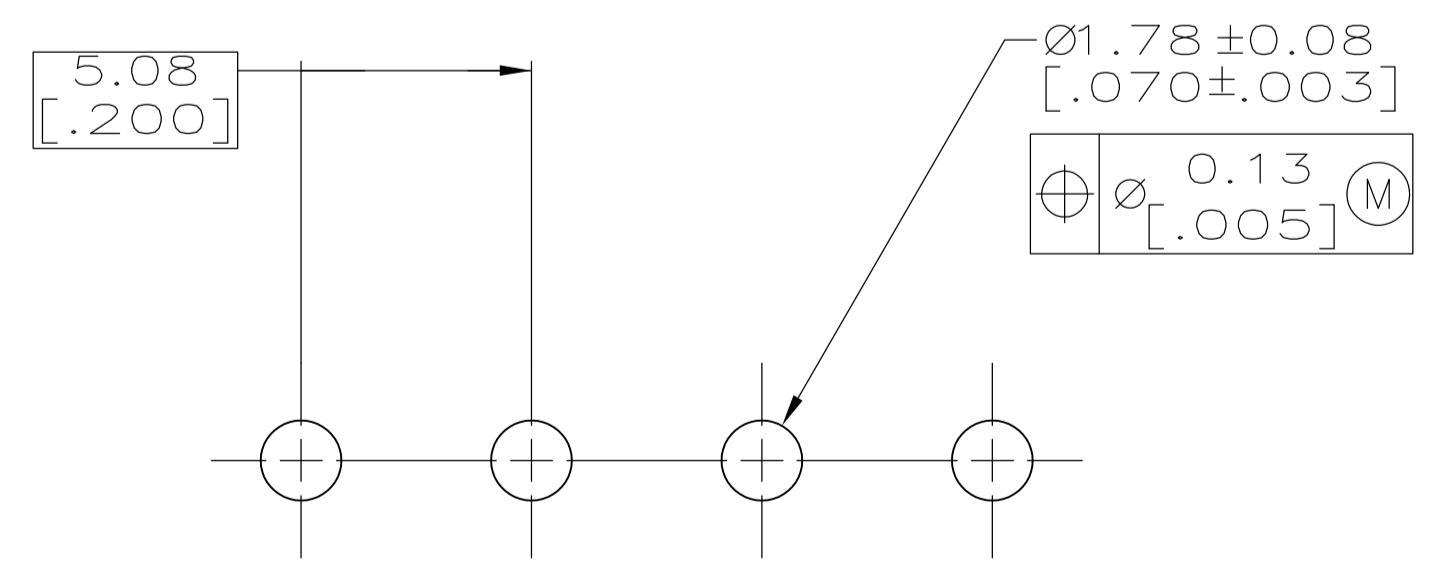
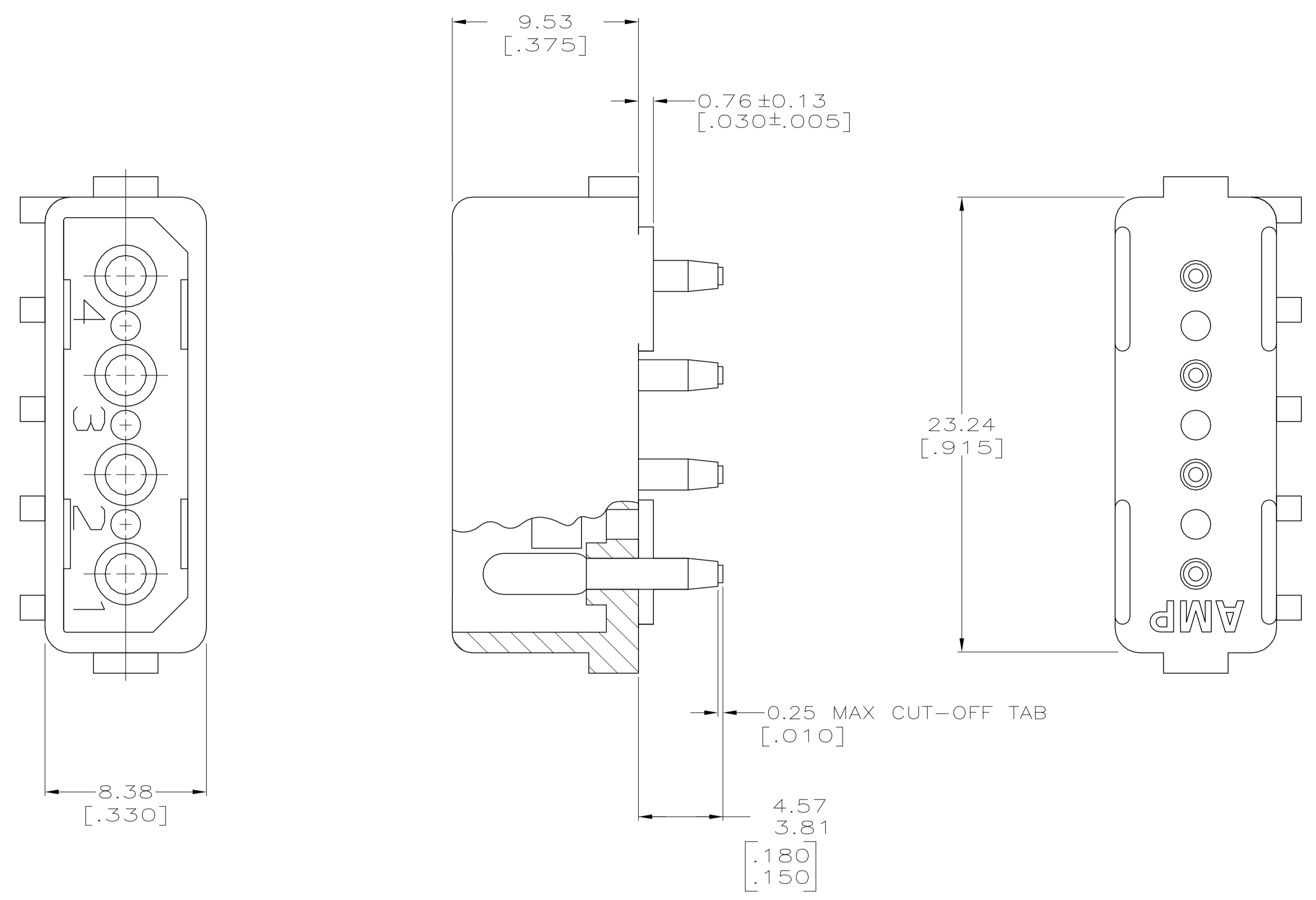


LOC	DIST	REVISIONS			
CM	53	REV	DESCRIPTION	DATE	BY
		G	REVISED PER ECO-08-006886	19MAR08	HMR CC

1 PARTS COMPLY WITH AMP SOLDERABILITY SPEC. 109-11-3.
 3 MATERIAL: HOUSING - NYLON,UL94V-2,NATURAL
 PIN - COPPER ALLOY,BRIGHT TIN-LEAD
 PLATED,0.0020 [.000080] MIN.THK.



RECOMMENDED MOUNTING HOLE PATTERN FOR 1.57 [.062] THICK P.C. BOARD

METRIC

4	770328-1
NO. OF POSITIONS	PART NUMBER
HEADER ASSEMBLY	

THIS DRAWING IS A CONTROLLED DOCUMENT.		DIN K. WHITAKER 7-7-89	Tyco Electronics Corporation Harrisburg, PA 17105-3608	
DIMENSIONS: mm [INCHES]		CHK R. SWING 7-10-89	NAME: HEADER ASSY, 4 CKT, COMMERCIAL MATE-N-LOK™	
TOLERANCES UNLESS OTHERWISE SPECIFIED:		APVD G. BROWN 7-11-89	RESTRICTED TO: ---	
0 PL C	± -	PRODUCT SPEC	SIZE: A1	
1 PL C	± -	APPLICATION SPEC	CAGE CODE: 00779	
2 PL C	± -	WEIGHT: ---	DRAWING NO: 770328	
3 PL C	± 0.38 [.015]	CUSTOMER DRAWING	SCALE: 6:1	
4 PL C	± -		SHEET 1 OF 1	
ANGLES	± -		REV G	

X-ON Electronics

Largest Supplier of Electrical and Electronic Components

Click to view similar products for [Pin & Socket Connectors](#) category:

Click to view products by [TE Connectivity](#) manufacturer:

Other Similar products are found below :

[6450822-1](#) [770392-1](#) [794042-1](#) [796885-1](#) [8-794535-1](#) [881459-2](#) [R929993003](#) [1-350779-3](#) [1403611-1](#) [1-480349-5](#) [1586092-1](#) [1586129-1](#)
[1586487-1](#) [1586681-4](#) [1586700-1](#) [1586065-1](#) [1586077-1](#) [1586368-1](#) [1586380-1](#) [1586680-5](#) [1586681-2](#) [1604996-1](#) [16-06-0038](#) [164164-5](#) [1-](#)
[6609930-1](#) [172296-1](#) [1-794714-6](#) [19-09-2035](#) [1969804-1](#) [200503-1](#) [200788-2](#) [201046-7](#) [202648-4](#) [2029076-2](#) [2029090-4](#) [2029095-4](#) [2-](#)
[66102-6](#) [925061-7](#) [926681-1](#) [293734-4](#) [293737-2](#) [1-765362-4](#) [1-794606-3](#) [1871534-1](#) [1969795-1](#) [1969798-1](#) [1969800-1](#) [200833-4](#)
[2008625-2](#) [2029027-2](#)