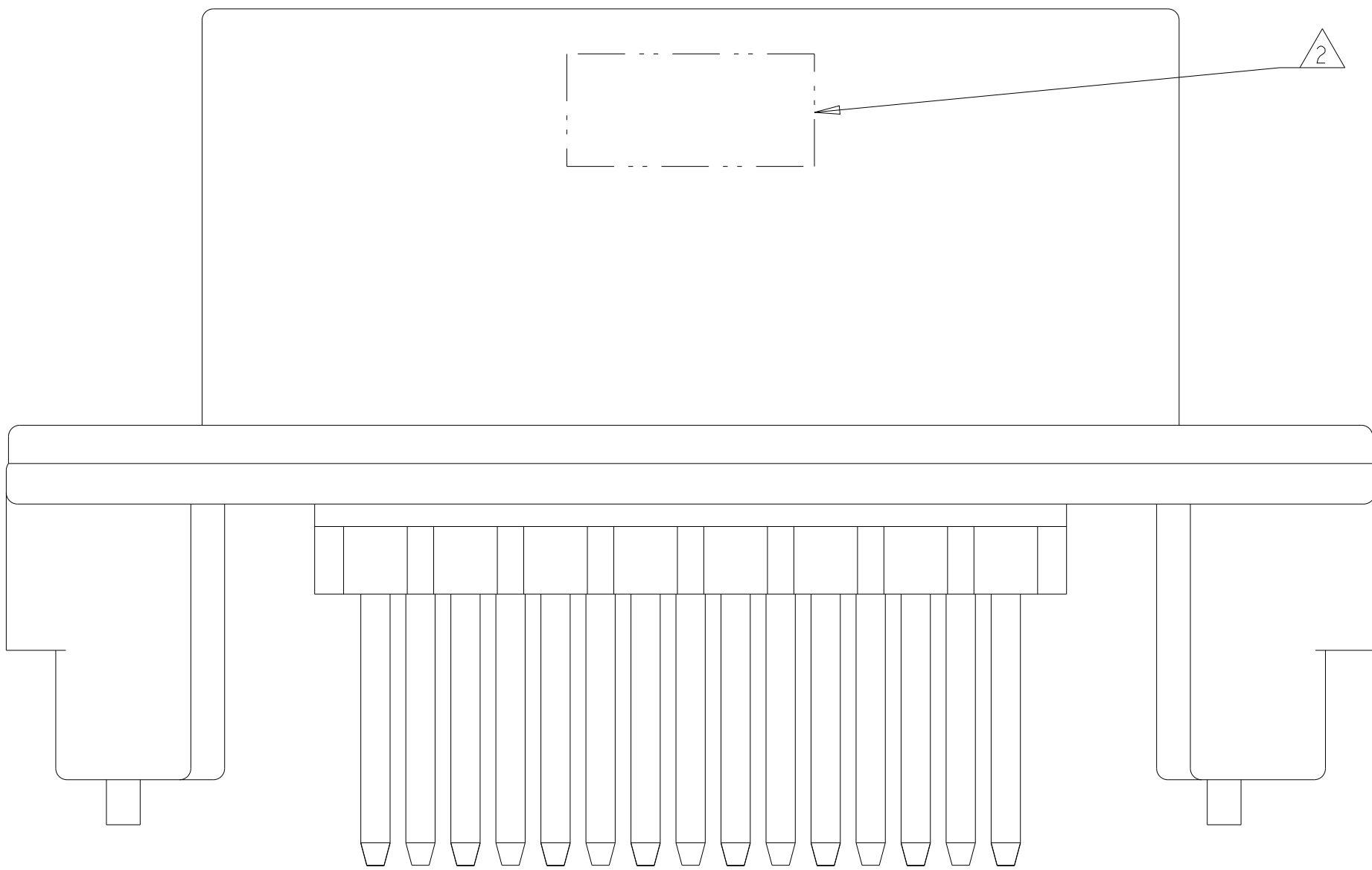
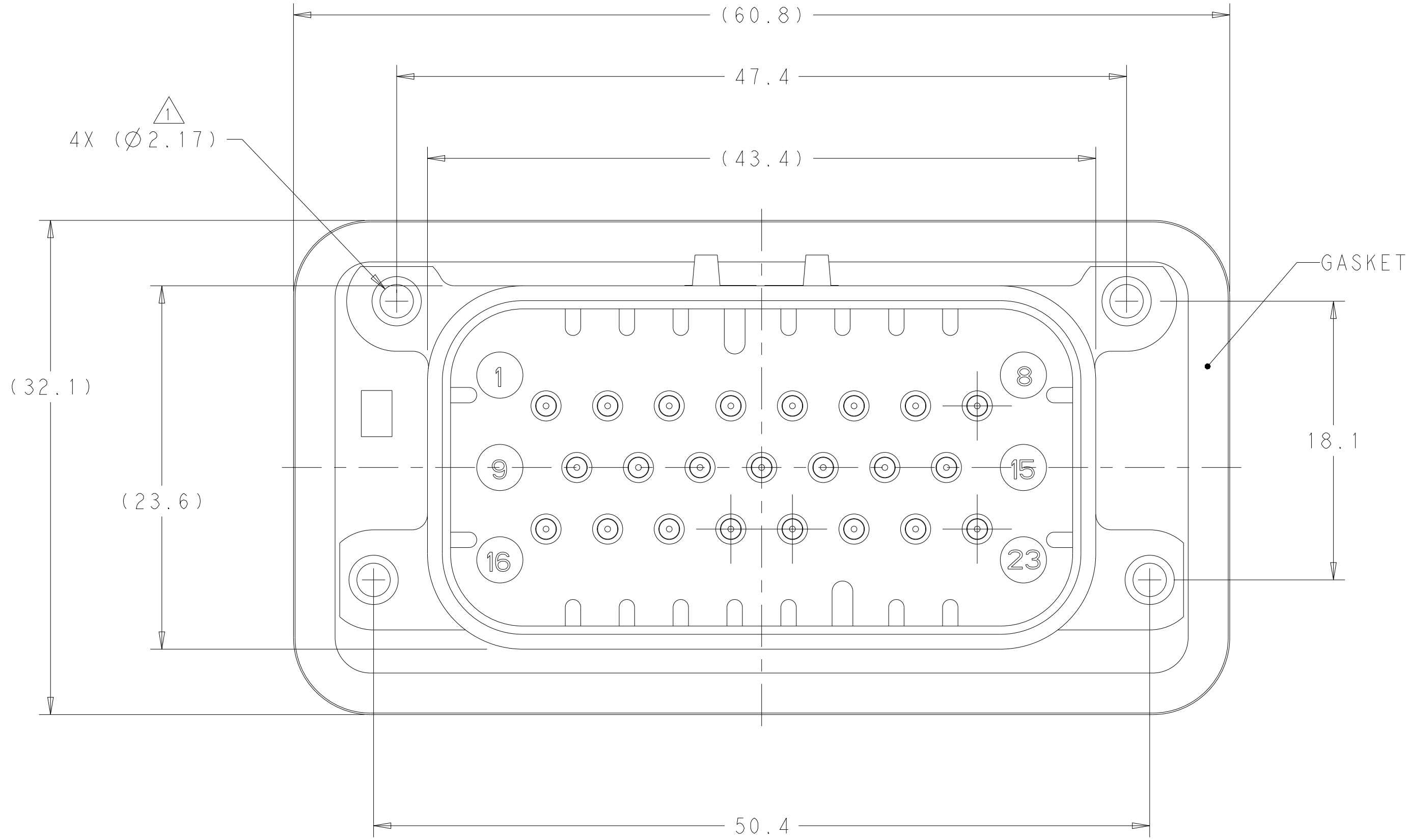
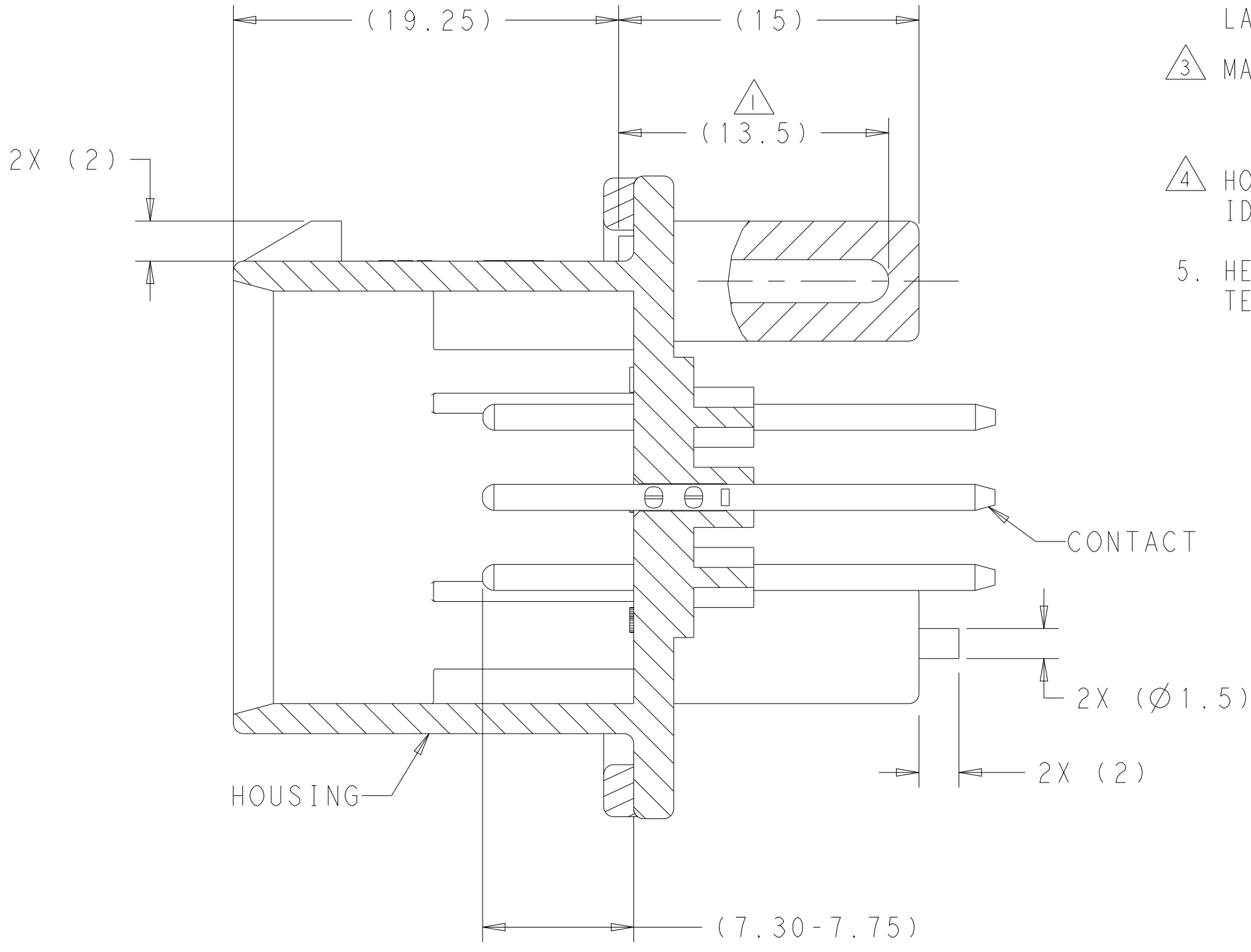


REVISIONS					
P	LTR	DESCRIPTION	DATE	DWN	APVD
C15		REVISED PER ECO-20-004256	25MAR2020	JM	DS
C16		REVISED PER PCN E-20-016603	20NOV2020	PN	DS
D		REVISED PER ECN-21-123056	08NOV2021	DK	CB

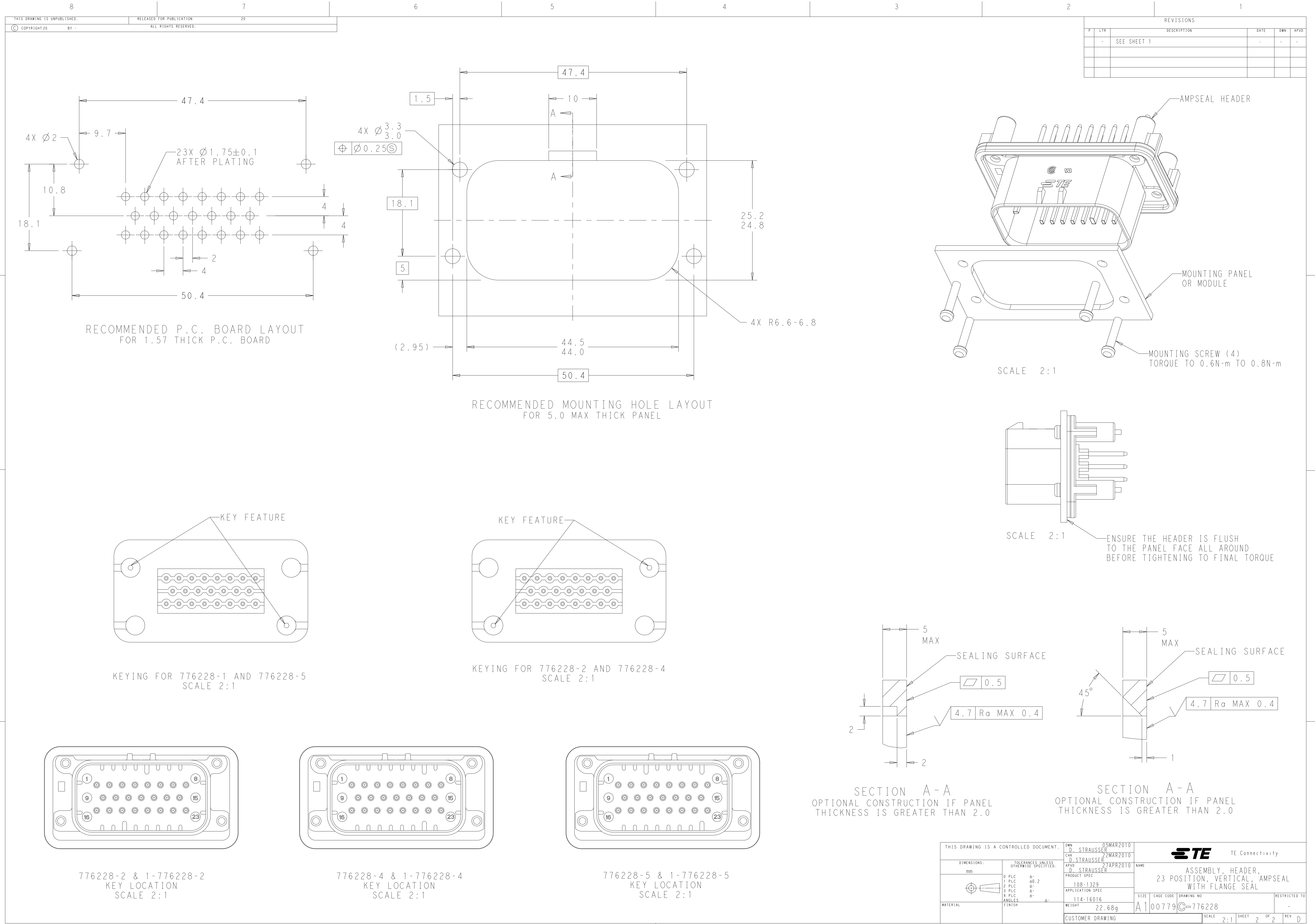
- ⚠ SUGGESTED MOUNTING SCREW SIZE IS Ø2.50-3.00mm
[Ø0.099 - 0.118 INCH] SELF TAPPING THREAD FORMING SCREW,
SUCH AS DELTA PT, TO BE DRIVEN AT 0.6-0.8 N-m
THE CUSTOMER SHOULD TEST THE SCREW SIZE AND TYPE IN ORDER
TO VERIFY THEIR SELECTION FOR THEIR APPLICATION
- ⚠ DATE CODE IN THIS LOCATION USING 5 DIGIT CODE
FIRST 2 DIGITS = YEAR, SECOND 2 DIGITS = WEEK,
LAST DIGIT = DAY
- ⚠ MATERIALS: HEADER HOUSING - GLASS FILLED PBT
PINS - TIN OR GOLD PLATED BRASS
GASKET - SILICONE
- ⚠ HOUSING COLORS ARE MECHANICALLY KEYED TO MATE ONLY WITH
IDENTICALLY COLORED PLUG ASSEMBLIES.
5. HEADER MATES TO PLUG ASSEMBLY 770680 WHICH USES REELED
TERMINAL 770520 OR LOOSE PIECE TERMINAL 770854



776228-1 & 1-776228-1 SHOWN

BLUE	GOLD	1-776228-5
GRAY	GOLD	1-776228-4
NATURAL	GOLD	1-776228-2
BLACK	GOLD	1-776228-1
BLUE	TIN	776228-5
GRAY	TIN	776228-4
NATURAL	TIN	776228-2
BLACK	TIN	776228-1
HEADER COLOR ⚠ 4	PLATING	PART NUMBER

THIS DRAWING IS A CONTROLLED DOCUMENT.			DWN D. STRAUSSER 05MAR2010	<div><div>TE Connectivity</div><div>ASSEMBLY, HEADER, 23 POSITION, VERTICAL, AMPSEAL WITH FLANGE SEAL</div></div>		
DIMENSIONS:			CHK D. STRAUSSER 22MAR2010			
mm			APVD D. STRAUSSER 27APR2010			
			PRODUCT SPEC			
TOLERANCES UNLESS OTHERWISE SPECIFIED:			108-1329	NAME		
0 PLC ±.2			APPLICATION SPEC	SIZE		RESTRICTED TO
1 PLC ±.			114-16016	CAGE CODE		DRAWING NO
2 PLC ±.			WEIGHT	A1		00779
3 PLC ±.			22.68g	C=776228		-
4 PLC ±.			CUSTOMER DRAWING	SCALE		4:1
ANGLES ±.				SHEET		1 OF 2
FINISH ⚠ 3				REV		D



X-ON Electronics

Largest Supplier of Electrical and Electronic Components

Click to view similar products for [Automotive Connectors](#) category:

Click to view products by [TE Connectivity](#) manufacturer:

Other Similar products are found below :

[003-018-000](#) [60403001](#) [60993906-B](#) [M902-2131](#) [M902-2161](#) [M902-2344](#) [72.330.1035.1](#) [73.353.4028.0](#) [F119300-B](#) [F166900](#) [F258300-B](#)
[F358300-B](#) [F407400](#) [F444110](#) [F487000](#) [F509500B-B](#) [827153-1](#) [8N1515-32-24P](#) [9-1326729-8](#) [925474-1](#) [928905-1](#) [964562-4](#) [968782-1](#)
[GT17SA-8DS-HU](#) [98891-1012](#) [98947-1016](#) [12004147](#) [12004475-L](#) [12010290](#) [12010309-B](#) [12015454](#) [12020219-B](#) [12041318-B](#) [12052225-](#)
[L](#) [12052466](#) [12064869](#) [12004327-B](#) [12015308](#) [12015384](#) [12015909](#) [1-21030-1](#) [12041254](#) [12041318](#) [12047946-B](#) [12047957](#) [12047957-L](#)
[12059473](#) [12066261](#) [12110546](#) [12110546-B](#)