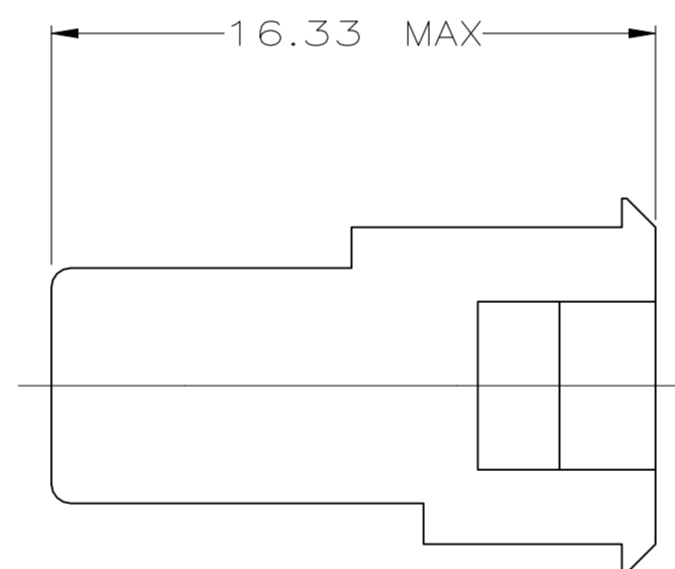
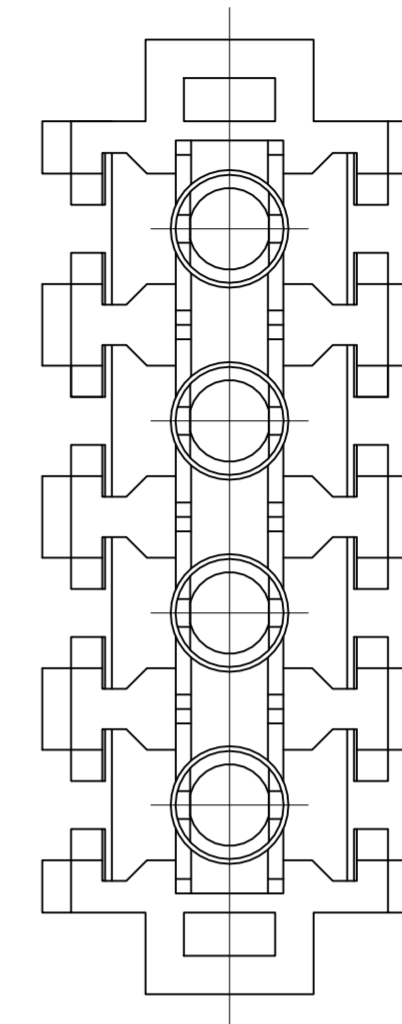
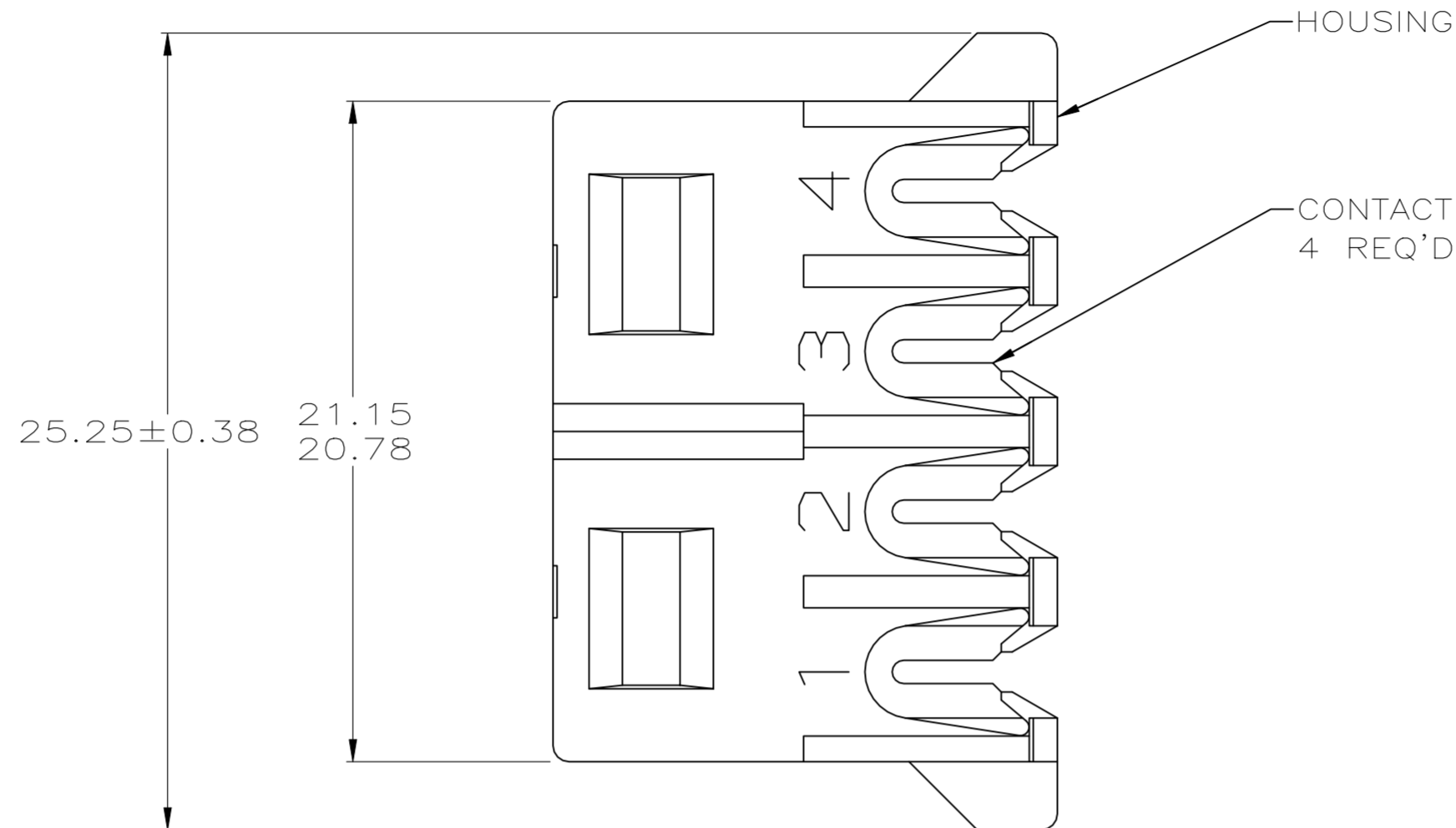
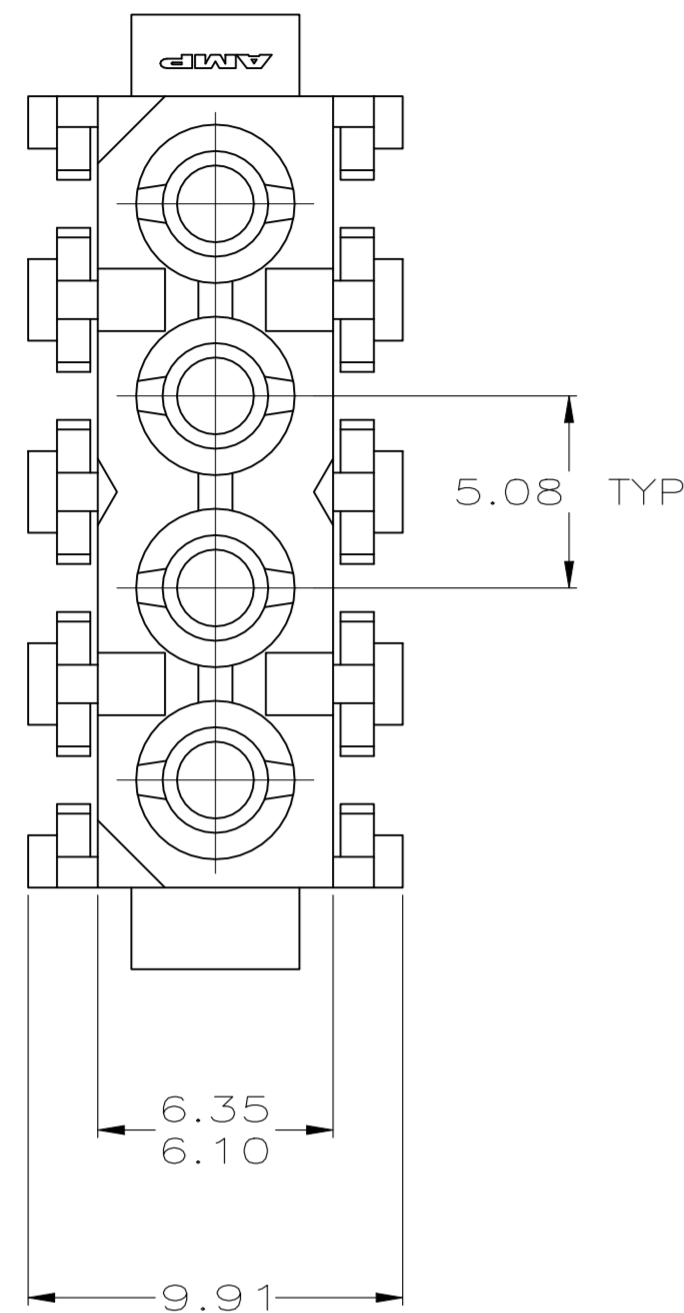


THIS DRAWING IS UNPUBLISHED. RELEASED FOR PUBLICATION  
 © COPYRIGHT - TE Connectivity Ltd. ALL RIGHTS RESERVED.

| REVISIONS |     |                           |           |       |
|-----------|-----|---------------------------|-----------|-------|
| P         | LTR | DESCRIPTION               | DATE      | APVD  |
| C2        |     | REVISED PER ECR-21-117185 | 22OCT2021 | PJ VS |



- 1. NOTE DELETED.
- 2. DIMENSION SHOWN REPRESENT PRODUCT IN DRY CONDITION. ADDITIONAL 2% GROWTH DUE TO END USE LOCATION MOISTURE ABSORPTION MAY OCCUR AND SHOULD BE ACCOUNTED FOR.

| COLOR  | WIRE SIZE                     | CONTACT MATERIAL AND FINISH | HOUSING MATERIAL | PART NO  |
|--------|-------------------------------|-----------------------------|------------------|----------|
| BLUE   | 1.25 mm <sup>2</sup> (16 AWG) | PHOS BRONZE, TIN            | NYLON,UL 94V-0   | 794036-4 |
| RED    | 0.4 mm <sup>2</sup> (22 AWG)  | PHOS BRONZE, TIN            | NYLON,UL 94V-0   | 794036-3 |
| YELLOW | 0.5 mm <sup>2</sup> (20 AWG)  | PHOS BRONZE, TIN            | NYLON,UL 94V-0   | 794036-2 |
| ORANGE | 0.8 mm <sup>2</sup> (18 AWG)  | PHOS BRONZE, TIN            | NYLON,UL 94V-0   | 794036-1 |

| MM   | IN   | MM    | IN   |
|------|------|-------|------|
| 9.91 | .390 | -     | -    |
| 6.35 | .250 | 25.25 | .994 |
| 6.10 | .240 | 21.15 | .833 |
| 5.08 | .200 | 20.78 | .818 |
| 0.13 | .005 | 16.33 | .643 |

CONVERSION TABLE

THIS DRAWING IS A CONTROLLED DOCUMENT.

|                              |   |
|------------------------------|---|
| DWN<br>K. WHITAKER<br>2-4-94 | TE Connectivity   |
| CHK<br>R. SWING<br>2-4-94    |   |
| APVD<br>-                    | NAME  |
| PRODUCT SPEC<br>-            | PLUG ASSEMBLY,<br>INSULATION DISPLACEMENT,<br>COMMERCIAL MATE-N-LOK(TM) |
| APPLICATION SPEC<br>-        | SIZE<br>A2  |
| MATERIAL<br>SEE TABLE        | CAGE CODE<br>00779  |
| FINISH<br>SEE TABLE          | DRAWING NO<br>C=794036  |
| WEIGHT<br>0.000000           | RESTRICTED TO<br>-  |
| CUSTOMER DRAWING             | SCALE<br>5:1  |
|                              | SHEET<br>1 OF 1   |
|                              | REV<br>C2   |

## X-ON Electronics

Largest Supplier of Electrical and Electronic Components

*Click to view similar products for [Pin & Socket Connectors](#) category:*

*Click to view products by [TE Connectivity](#) manufacturer:*

Other Similar products are found below :

[6450822-1](#) [770392-1](#) [794042-1](#) [796885-1](#) [8-794535-1](#) [PLR3455ACS-222](#) [R929991004](#) [R929993003](#) [1403611-1](#) [1-480349-5](#) [152302-5](#)  
[153211-2](#) [1586092-1](#) [1586129-1](#) [1586681-4](#) [1586700-1](#) [1586368-1](#) [1586380-1](#) [1586616-1](#) [1586680-5](#) [16-06-0038](#) [164164-5](#) [1-6609930-1](#)  
[172296-1](#) [19-09-2035](#) [200503-1](#) [200788-2](#) [2029090-4](#) [2029095-4](#) [925061-7](#) [293734-4](#) [293737-2](#) [1-765362-4](#) [1871534-1](#) [200833-4](#)  
[2008625-2](#) [2029027-2](#) [2029096-4](#) [R929991000](#) [R929991002](#) [R929993000](#) [319-10-101-00-005000](#) [319-10-102-00-001000](#) [319-10-104-00-001000](#) [319-10-105-00-001000](#) [319-10-108-00-001000](#) [319-10-112-00-006000](#) [39-01-8019](#) [319-10-101-00-001000](#) [319-10-102-00-005000](#)