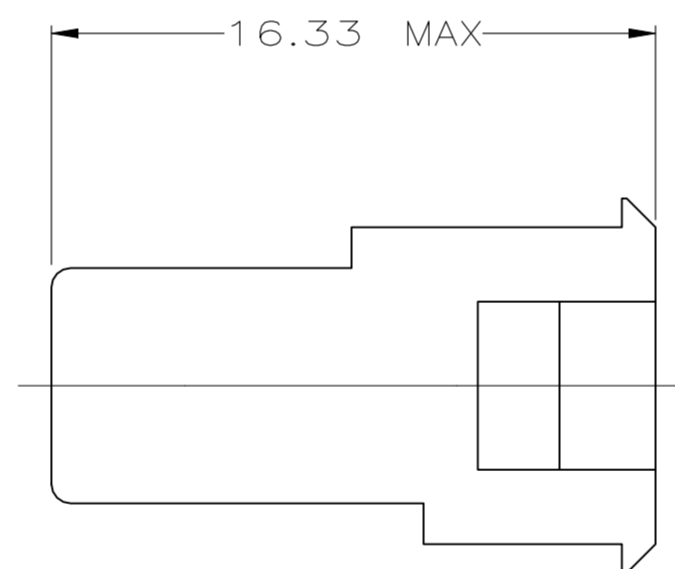
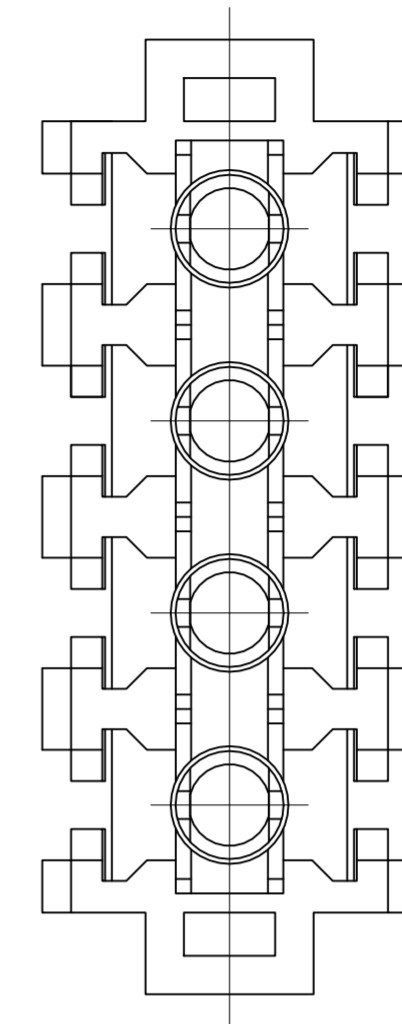
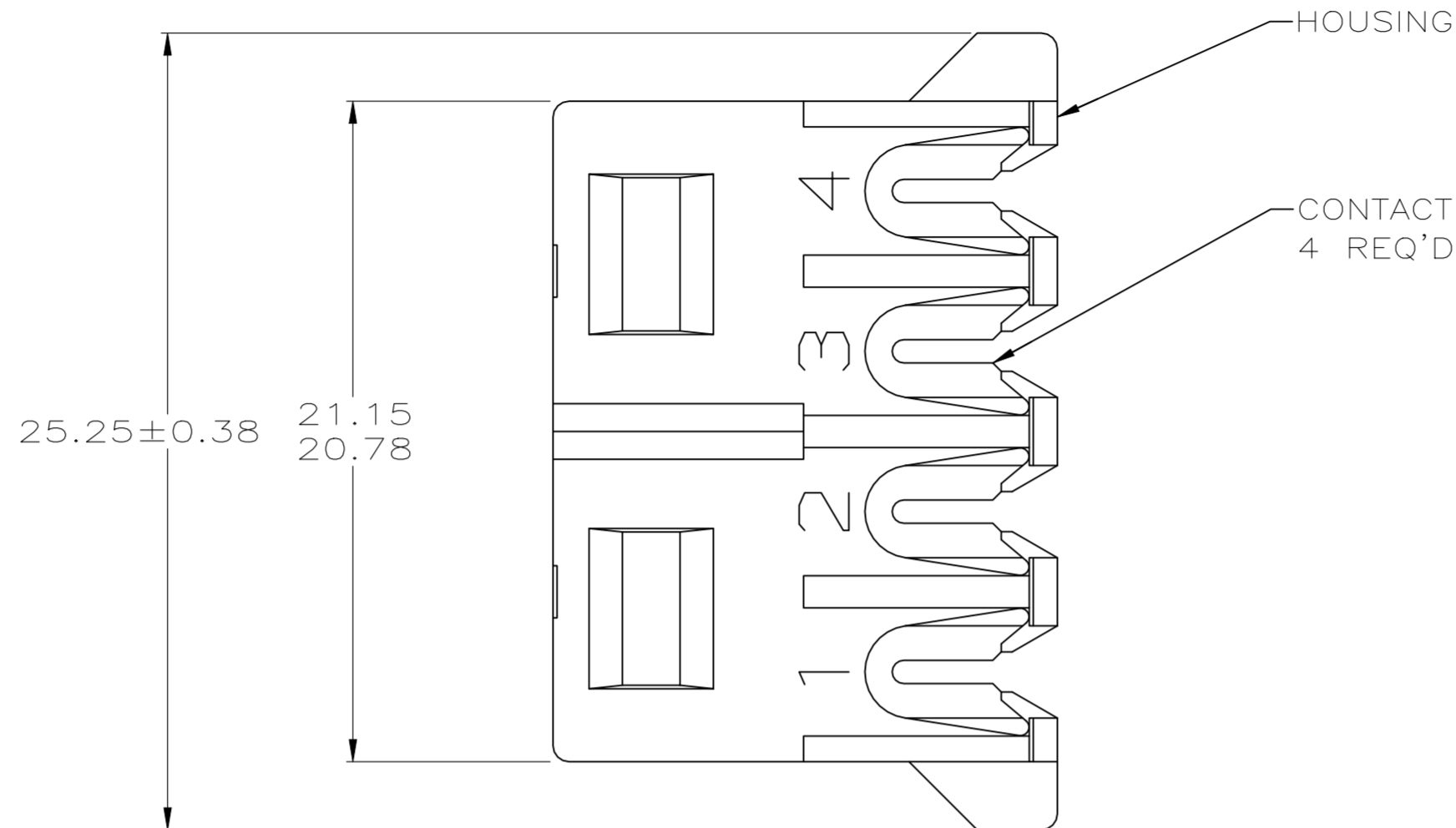
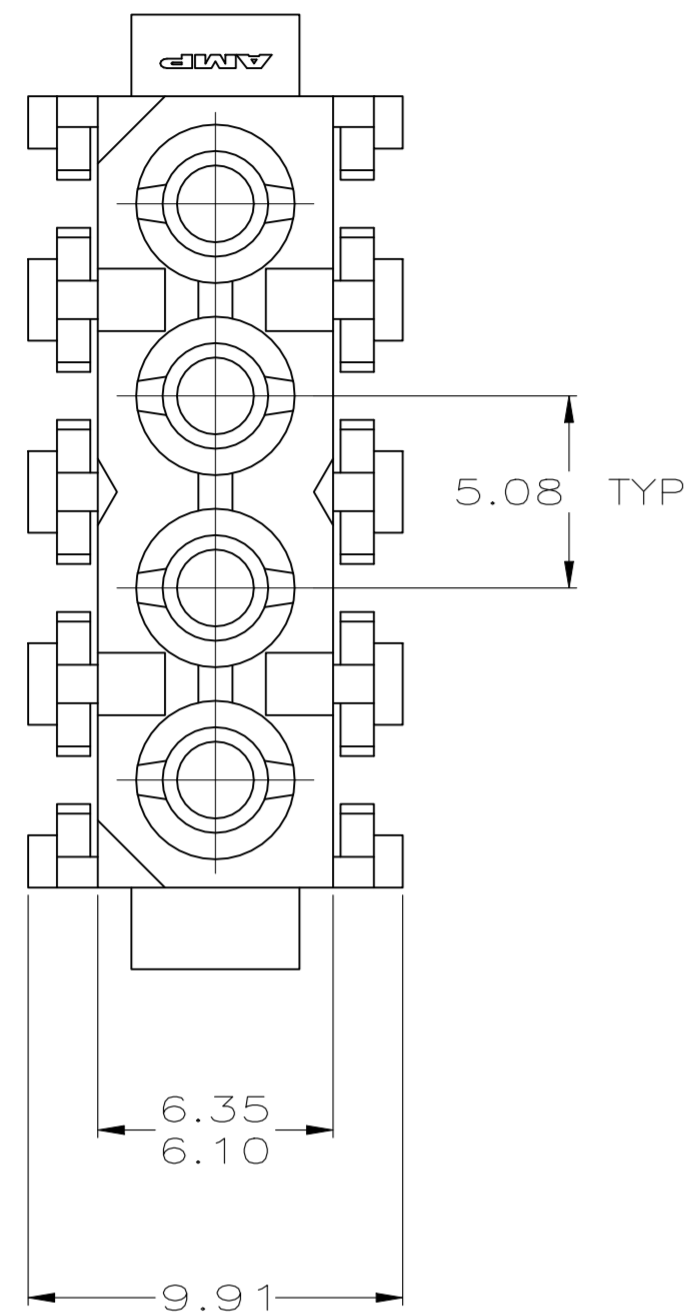


THIS DRAWING IS UNPUBLISHED. RELEASED FOR PUBLICATION
 © COPYRIGHT - TE Connectivity Ltd. ALL RIGHTS RESERVED.

REVISIONS					
P	LTR	DESCRIPTION	DATE	DWN	APVD
C2		REVISED PER ECR-21-117185	22OCT2021	PJ	VS



- 1. NOTE DELETED.
- 2. DIMENSION SHOWN REPRESENT PRODUCT IN DRY CONDITION. ADDITIONAL 2% GROWTH DUE TO END USE LOCATION MOISTURE ABSORPTION MAY OCCUR AND SHOULD BE ACCOUNTED FOR.

COLOR	WIRE SIZE	CONTACT MATERIAL AND FINISH	HOUSING MATERIAL	PART NO
BLUE	1.25 mm ² (16 AWG)	PHOS BRONZE, TIN	NYLON,UL 94V-0	794036-4
RED	0.4 mm ² (22 AWG)	PHOS BRONZE, TIN	NYLON,UL 94V-0	794036-3
YELLOW	0.5 mm ² (20 AWG)	PHOS BRONZE, TIN	NYLON,UL 94V-0	794036-2
ORANGE	0.8 mm ² (18 AWG)	PHOS BRONZE, TIN	NYLON,UL 94V-0	794036-1

MM	IN	MM	IN
9.91	.390	-	-
6.35	.250	25.25	.994
6.10	.240	21.15	.833
5.08	.200	20.78	.818
0.13	.005	16.33	.643

CONVERSION TABLE

THIS DRAWING IS A CONTROLLED DOCUMENT.

DWN K. WHITAKER 2-4-94	TE Connectivity
CHK R. SWING 2-4-94	
APVD -	NAME
PRODUCT SPEC -	PLUG ASSEMBLY, INSULATION DISPLACEMENT, COMMERCIAL MATE-N-LOK(TM)
APPLICATION SPEC -	SIZE A2
MATERIAL SEE TABLE	CAGE CODE 00779
FINISH SEE TABLE	DRAWING NO C=794036
WEIGHT 0.000000	RESTRICTED TO -
CUSTOMER DRAWING	SCALE 5:1
	SHEET 1 OF 1
	REV C2

X-ON Electronics

Largest Supplier of Electrical and Electronic Components

Click to view similar products for [Pin & Socket Connectors](#) category:

Click to view products by [TE Connectivity](#) manufacturer:

Other Similar products are found below :

[6450822-1](#) [770392-1](#) [794042-1](#) [796885-1](#) [8-794535-1](#) [PLR3455ACS-222](#) [R929991004](#) [R929993003](#) [1403611-1](#) [1-480349-5](#) [152302-5](#)
[153211-2](#) [1586092-1](#) [1586129-1](#) [1586681-4](#) [1586700-1](#) [1586368-1](#) [1586380-1](#) [1586616-1](#) [1586680-5](#) [16-06-0038](#) [164164-5](#) [1-6609930-1](#)
[172296-1](#) [19-09-2035](#) [200503-1](#) [200788-2](#) [2029090-4](#) [2029095-4](#) [925061-7](#) [293734-4](#) [293737-2](#) [1-765362-4](#) [1871534-1](#) [200833-4](#)
[2008625-2](#) [2029027-2](#) [2029096-4](#) [R929991000](#) [R929991002](#) [R929993000](#) [319-10-101-00-005000](#) [319-10-102-00-001000](#) [319-10-104-00-001000](#) [319-10-105-00-001000](#) [319-10-108-00-001000](#) [319-10-112-00-006000](#) [39-01-8019](#) [319-10-101-00-001000](#) [319-10-102-00-005000](#)