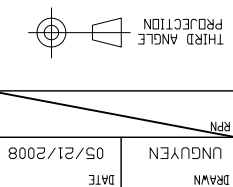


UNLESS OTHERWISE SPECIFIED
DIMENSIONS ARE IN
MILLIMETERS
METRIC DIMENSIONS ARE IN
BRACKETS.

DECIMAL TOLERANCES
.XXX ± 0.005
.XX ± 0.01
.X ± 0.1
mm

ANGLE TOLERANCE
X ± 1 DEG.



DATE 05/21/2008
DRAWN UNGUYEN

DD NOT SCALE THIS DRAWING
SHEET 1 OF 2

SIZE B
CODE IDENT. NO. 06090
DWG. NO. 202A111thru196

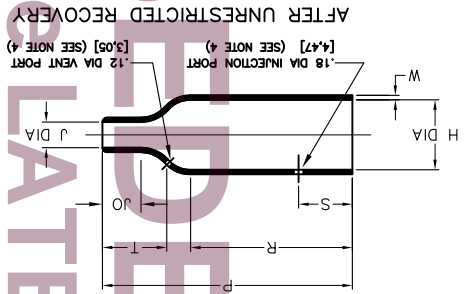
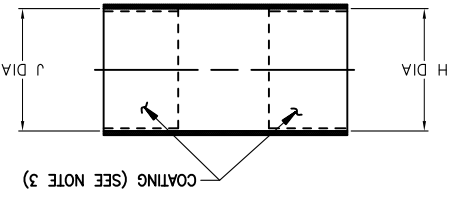
TITLE
BOOT, STRAIGHT,
OVEREXPANDED

TE Connectivity

CUSTOMER DRAWING
Raychem Molded Parts

PART NUMBER	H			J		
	Min	Max	Min	Max	Min	Max
202A111	.65	.65	.31	.47	.15	1.00
202A121	[24.6]	[22.6]	[23.4]	[9.9]	[24.6]	[17.8]
202A132	1.12	1.03	1.05	.56	1.12	.80
202A142	1.22	1.22	1.22	.70	1.22	1.00
202A153	[36.0]	[36.0]	[36.0]	[21.9]	[36.0]	[36.0]
202A163	1.68	1.68	1.68	1.08	1.68	1.07
202A174	2.04	1.90	2.04	1.39	2.04	1.90
202A185	[66.0]	[66.0]	[66.0]	[43.7]	[66.0]	[66.0]
202A196	3.40	3.40	3.40	2.25	3.40	2.81

TABLE OF DIMENSIONS



- NOTES
1. ALL DIMENSIONS ARE IN MILLIMETERS
 2. DIMENSIONS APPEARING IN TABLE ARE AS FOLLOWS:
a - AS SUPPLIED
b - AFTER UNRESTRICTED RECOVERY
 3. COATING (ADHESIVE) IS OPTIONAL
IN TABLE FOR UNCOATED PARTS.
WHEN COATING IS ADDED, ENTRY
DIAMETERS WILL BE REDUCED BY .06 MAX.
 4. MOLDING PORTS ARE OPTIONAL.
WHEN -00 MODIFICATION NUMBER IS
SPECIFIED MOLDING PORTS WILL BE
LOCATED AS SHOWN.

REVISIONS	DATE	DESCRIPTION	Y
	07/01/15	REVISED PER ECD-15-010088	

REVISION

COMPATIBILITY CHART

MATERIAL DASH NO.	MATERIAL DESCRIPTION	RT SPEC	COATING SLASH NO.	COATING SPEC	COATING DESCRIPTION
-3	POLYOLEFIN, SEMI-RIGID	RT-301	/42; /86	S-1017; S-1048	ADHESIVE
-4	POLYOLEFIN, FLEXIBLE	RT-1304	/164; /86; /180	S-1017; S-1048; S-1030	ADHESIVE
-5	ELASTOMER, FLEXIBLE	RT-501	/42;	S-1017	ADHESIVE
-6	SILICONE	RT-602	N/A		
-12	FLUOROELASTOMER	RT-1312	N/A		
-25	ELASTOMER, FLUID RESISTANT	RW-2070	/42; /86; /225	S-1017; S-1048; S-1206	ADHESIVE
-100	POLYOLEFIN, SEMI-FLEXIBLE	RT-1323	/180; /184; /86	S-1030; S-1048	ADHESIVE
	ZEROHAL				

ORDERING INFORMATION

BASE PART NUMBER _____ 202A1XX
 MATERIAL DASH NUMBER _____ -XXX
 MODIFICATION NUMBER _____ -XX
 ADHESIVE SLASH NUMBER _____ /XX

(SEE COMPATIBILITY CHART)
 (IF NECESSARY, SEE COMPATIBILITY CHART)

CUSTOMER DRAWING

SIZE	DWG. NO.	REV.	DWG. NO.	REV.
B	06090	Y	06090	Y

DD NOT SCALE THIS DRAWING

202A111thru196

SHEET 2 OF 2

X-ON Electronics

Largest Supplier of Electrical and Electronic Components

Click to view similar products for [Heat Shrink Cable Boots & End Caps](#) category:

Click to view products by [TE Connectivity](#) manufacturer:

Other Similar products are found below :

[577159N001](#) [007758-000](#) [610368N003](#) [645494-000](#) [M85049/141-02HU](#) [M85049/141-03HU](#) [M85049/141-04HU](#) [687025-000](#) [705331-000](#)
[718446-000](#) [725666N001](#) [729257-000](#) [F21914-000](#) [F27131-000](#) [F85868-000](#) [770-006A103R](#) [770-006A304W1](#) [770-006A305W1](#) [770-](#)
[006A308W1](#) [770-011T303W1](#) [770-011T304W1](#) [770-020S702W1](#) [770-020S704W1](#) [806138-000](#) [806542N001](#) [807507-000](#) [808059-000](#)
[808296-000](#) [808362-000](#) [808828-000](#) [809125-000](#) [809130-000](#) [809218-000](#) [811218-000](#) [811288-000](#) [812014-000](#) [812047-000](#) [813166-000](#)
[813767N002](#) [814417-000](#) [819115N001](#) [819117N001](#) [823026-000](#) [823070-000](#) [825002-000](#) [841189N001](#) [861471-000](#) [866647-000](#) [937577-](#)
[000](#) [950764-000](#)