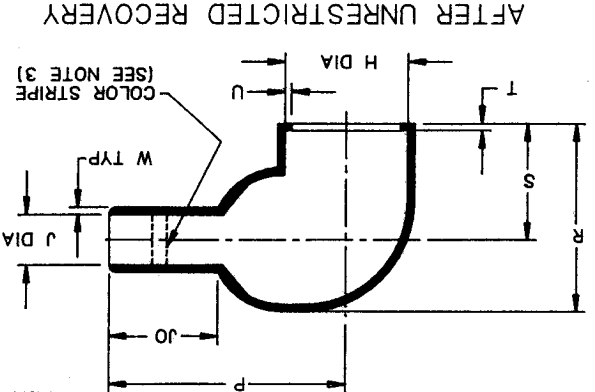


REVISIONS		LTR	DESCRIPTION	DATE	APPROVED



AS SUPPLIED

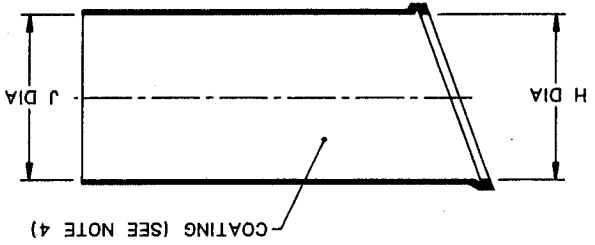
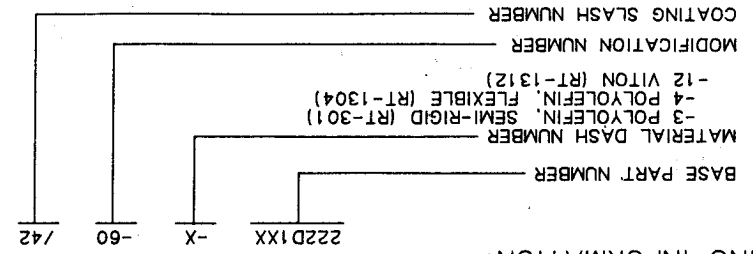


TABLE OF DIMENSIONS

PART NUMBER	-3, -4, -12		-3, -4		-12		J	P	R	S	T	U	JO	W
	MIN	MAX	MIN	MAX	MIN	MAX								
222D121-X-60	.92	.41	.92	.49	.22	.84	.89	.65	.12	.040	.23	.05		
222D132-X-60	1.12	.56	1.12	.58	.26	1.33	1.07	.76	.12	.040	.65	.06		
222D142-X-60	1.22	.70	1.22	.63	.28	1.44	1.22	.83	.12	.040	.50	.07		
222D152-X-60	1.42	.88	1.42	.73	.33	1.72	1.38	.90	.12	.040	.57	.07		
222D163-X-60	1.68	1.11	1.68	.87	.39	2.11	1.73	1.14	.12	.065	.69	.08		
222D174-X-60	2.04	1.36	2.04	1.39	.62	3.07	2.08	1.32	.12	.065	1.32	.13		
222D185-X-60	2.60	1.75	2.60	1.80	.80	3.84	2.60	1.64	.12	.080	1.58	.15		
222D196-X-60	3.22	2.38	3.22	2.25	1.00	4.64	3.30	2.03	.12	.080	1.50	.16		

ORDERING INFORMATION:



SPECIFICATION CONTROL DRAWING (LIMITED DISTRIBUTION)

1. ALL DIMENSIONS ARE IN INCHES
2. DIMENSIONS APPEARING IN TABLE ARE AS FOLLOWS:  
 a - AS SUPPLIED  
 b - AFTER UNRESTRICTED RECOVERY
3. PARTS SHALL HAVE COLOR STRIPE .12 WIDE X 360° AROUND OUTSIDE SURFACE APPROX. AS SHOWN AND COLORS SHALL BE AS FOLLOWS:  
 DASH NO.      COLOR  
 -3              WHITE  
 -4              RED  
 -12             YELLOW
4. COATING IS OPTIONAL FOR -3 AND -4 MATERIALS ONLY, AS SUPPLIED DIMENSIONS APPEARING IN TABLE ARE FOR UNCOATED PARTS. WHEN COATING IS ADDED, ENTRY DIAMETERS WILL BE REDUCED BY .06 MAX. PARTS WILL BE COATED WITH S-1017 ADHESIVE WHEN SPECIFIED AS: 222D1XX-X-60/42

THIS DRAWING AND THE INFORMATION SET FORTH HEREON ARE THE PROPERTY OF RAYCHEM CORPORATION AND ARE TO BE HELD IN TRUST AND CONFIDENCE. PUBLICATION, DUPLICATION, DISCLOSURE OR USE FOR ANY PURPOSE NOT EXPRESSLY AUTHORIZED IN WRITING BY RAYCHEM CORPORATION IS PROHIBITED.		DO NOT SCALE THIS DRAWING
DRAWN	SEAN MCGARRY	CHECKED
DESIGN APPROVED	S.D.	DATE
APPROVED BY	S.D.	DATE
MANUFACTURING	11/13/16	DATE
QUALITY CONTROL	11/13/16	DATE
SPECIFICATION	11/13/16	DATE
TECHNICAL SERVICES	11/13/16	DATE
PRODUCT MANAGEMENT	11/13/16	DATE
RAYCHEM CORPORATION 300 CONSTITUTION DRIVE MSNLO PARK, CALIFORNIA 9025		TITLE
RAYchem		BOOT, 90° WITH LIP
DWG NO.	222D121-X-60	FSCM CODE NO.
DATE	222D196-X-60	SIZE B
SHEET	1	OF

## X-ON Electronics

Largest Supplier of Electrical and Electronic Components

*Click to view similar products for [Heat Shrink Cable Boots & End Caps](#) category:*

*Click to view products by [TE Connectivity](#) manufacturer:*

Other Similar products are found below :

[577159N001](#) [007758-000](#) [610368N003](#) [645494-000](#) [M85049/141-02HU](#) [M85049/141-03HU](#) [M85049/141-04HU](#) [687025-000](#) [705331-000](#)  
[718446-000](#) [725666N001](#) [729257-000](#) [F21914-000](#) [F27131-000](#) [F85868-000](#) [770-006A103R](#) [770-006A304W1](#) [770-006A305W1](#) [770-](#)  
[006A308W1](#) [770-011T303W1](#) [770-011T304W1](#) [770-020S702W1](#) [770-020S704W1](#) [806138-000](#) [806542N001](#) [807507-000](#) [808059-000](#)  
[808296-000](#) [808362-000](#) [808828-000](#) [809125-000](#) [809130-000](#) [809218-000](#) [811218-000](#) [811288-000](#) [812014-000](#) [812047-000](#) [813166-000](#)  
[813767N002](#) [814417-000](#) [819115N001](#) [819117N001](#) [823026-000](#) [823070-000](#) [825002-000](#) [841189N001](#) [861471-000](#) [866647-000](#) [937577-](#)  
[000](#) [950764-000](#)