

4

3

2

1

D

D

C

C

B

B

A

A

800 SERIES

8 XX

POSITIONS

- 08
- 14
- 16
- 18
- 20
- 22
- 24 (.600 t)
- 28
- 32
- 36
- 40
- 42
- 48
- 64

24 (.300 t)

24 (.400 t)

AX

AG = INSULATOR W/OUT RAILS

AR = Insulator with Rails

XXX

X

ESX

ES CONTACT - 30 MICRO GOLD 4 BEAM STAMPED

ESL CONTACT - 10 MICRO GOLD 4 BEAM STAMPED

SM= SURFACE MOUNT

LSG STYLE & TAIL CONFIGURATION

10 = gold/gold

11 = gold/tin-lead

12 = tin-lead/tin-lead

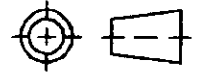
1 OBSOLETE PARTS: OBSOLETE CIS STREAMLINING PER D.RENAUD/D.SINISI
 1437538-9,2-1437537-8,4-1437537-5,4-1437537-9,7-1437537-1
 8-1437537-4

REV	O	O1	THIRD ANGLE PROJECTION	UNLESS OTHERWISE SPECIFIED DIMENSIONS ARE IN INCHES DO NOT SCALE PRINT		ORIGINAL DATE OF DRAWING: 8-31-87		TYCO ELECTRONICS			
	REVISIONS			OG3C-0413-02	TOLERANCES (EXCEPT AS NOTED) ANGULAR = ±1/2° DECIMAL .XX = ±.01 DECIMAL .XXX = ±.002 DECIMAL .XXXX = ±.0005	FILE NAME: BSMSERS1	DIRECTORY: PNCODEAS	DRAWN: J.P.PACHECO	DATE: 8-31-87	TITLE: ASSEMBLY, SOCKET SURFACE MOUNT	
				KW / 25FEB03		MATERIAL: NONE		CHECKED:	DATE:	DWG. NO. 8-1437533-1	
				ECO-09-026495		FINISH: NONE		APPROVED: A.J.C.	DATE: 6-2-92	REV. 01	PRODUCT CODE: 25/157
HMR / 08FEB10			CODE IDENT. NO. 91506	DWG. SIZE B	SCALE: NONE		SHEET 1 OF 3				

(AG) INSULATORS
(NO RAILS)

SEE SHEET #6

POS.	INSULATOR ITEM 1	QTY.	FIGURE	DIM. "A"	DIM. "B"	DIM. "C"	TUBE #	TUBE QTY.	QTY OF	
									CONTACT ASS'Y	125 P.C. TAIL PAGE 6 ITEM 2
8		1	1	.400 MAX	.400 MAX	.295/.305				
14		1	2	.700 MAX	.400 MAX	.295/.305				
16		1	2	.800 MAX	.400 MAX	.295/.305				
18		1	2	.900 MAX	.400 MAX	.295/.305				
20		1	2	1.000 MAX	.400 MAX	.295/.305				
22		1	2	1.100 MAX	.500 MAX	.395/.405				
24		1	2	1.200 MAX	.700 MAX	.595/.605				
24		1	2	1.200 MAX	.500 MAX	.395/.405				
24		1	2	1.200 MAX	.400 MAX	.295/.305				
28		1	3	1.400 MAX	.700 MAX	.595/.605				
32		1	3	1.600 MAX	.700 MAX	.595/.605				
36		1	3	1.800 MAX	.700 MAX	.595/.605				
40		1	3	2.000 MAX	.700 MAX	.595/.605				
42		1	3	2.100 MAX	.700 MAX	.595/.605				
48		1	3	2.400 MAX	.700 MAX	.595/.605				
64		1	3	3.200 MAX	1.000 MAX	.895/.905				

REV	SEE SHEET #1	 THIRD ANGLE PROJECTION	UNLESS OTHERWISE SPECIFIED DIMENSIONS ARE IN INCHES DO NOT SCALE PRINT		ORIGINAL DATE OF DRAWING: 8-31-87	TYCO ELECTRONICS		
			TOLERANCES (EXCEPT AS NOTED) ANGULAR = ±1/2° DECIMAL .XX = ±.01 DECIMAL .XXX = ±.002 DECIMAL .XXXX = ±.0005	FILE NAME: 8SMSERSS	DIRECTORY: PNCODEAS		DRAWN: J.P.PACHECO	DATE: 8-31-87
				MATERIAL: NONE		CHECKED:	DATE:	DWG. NO. 8-1437533-1
				FINISH: NONE		APPROVED: A.J.C.	DATE: 6-2-92	REV. 01
				CODE IDENT. NO. 91506	DWG. SIZE B	PRODUCT CODE: 25/157		
				NEXT ASSY:		SCALE: NONE SHEET 2 OF 3		

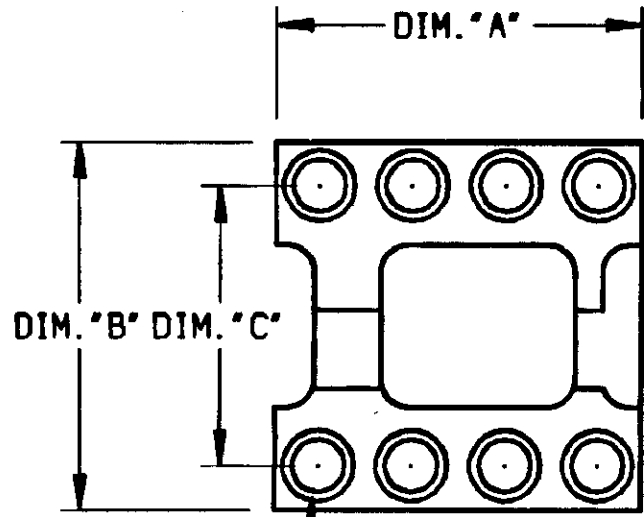


FIG. 1

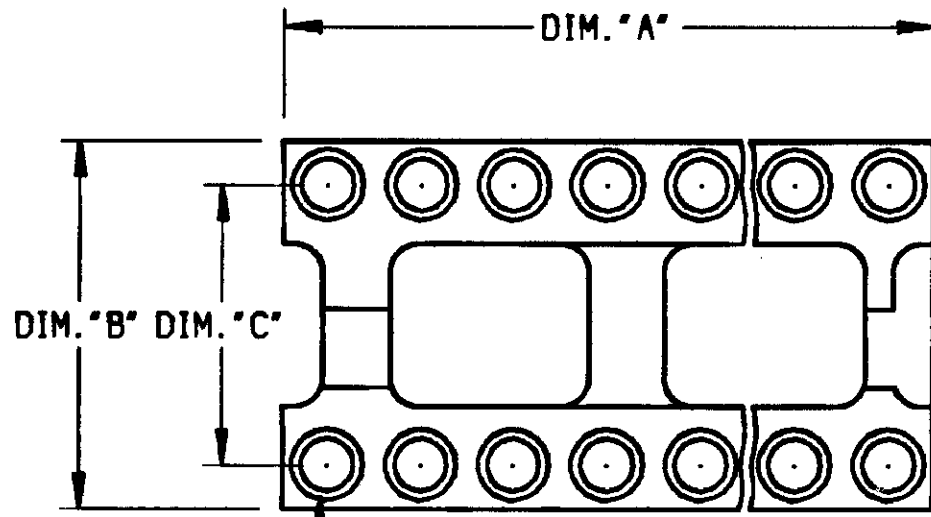


FIG. 2

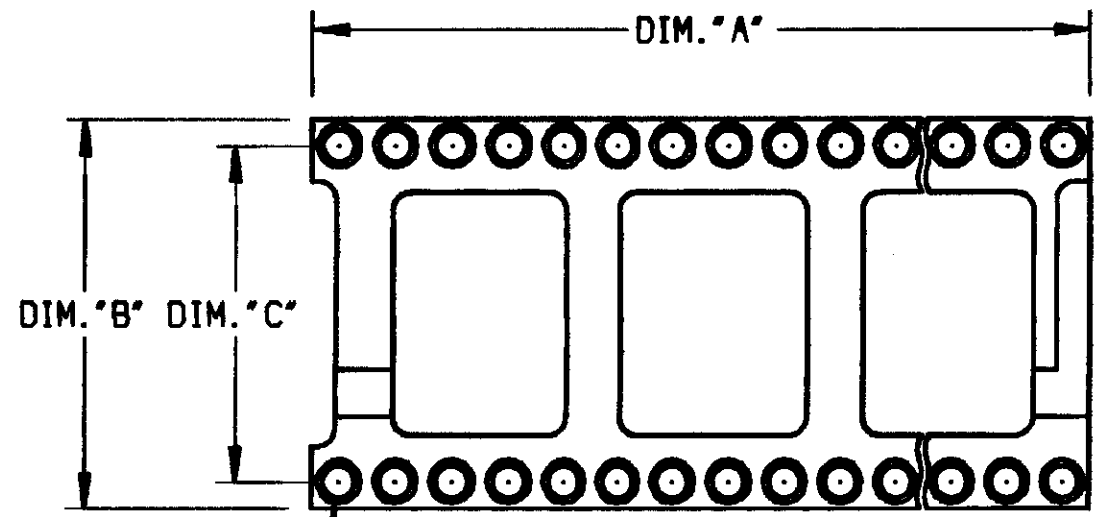
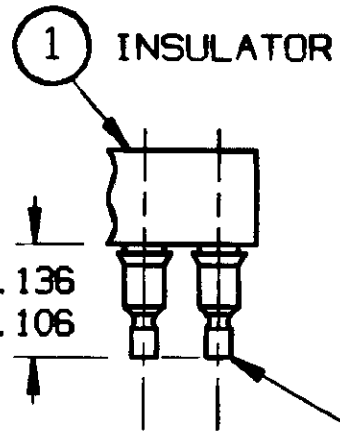


FIG. 3



② CONTACT ASS'Y

"X" SURFACES =
QTY. OF CONTACT ASS'Y.
VIEW D-D

ITEMS:

MATERIAL & FINISH:

1. INSULATOR - THERMOPLASTIC POLYESTER (BLACK) P E T
RATED 94V-0. (SEE FIGURE COLUMN ABOVE).

REV	SEE SHEET #1
REVISIONS	

<p>THIRD ANGLE PROJECTION</p>	
<p>TOLERANCES (EXCEPT AS NOTED)</p> <p>ANGULAR = ±1/2°</p> <p>DECIMAL .XX = ±.01</p> <p>DECIMAL .XXX = ±.002</p> <p>DECIMAL .XXXX = ±.0005</p>	

UNLESS OTHERWISE SPECIFIED DIMENSIONS ARE IN INCHES DO NOT SCALE PRINT	
FILE NAME: BSMSERS6	DIRECTORY: PNCODEAS
MATERIAL: NONE	
FINISH: NONE	

ORIGINAL DATE OF DRAWING: 8-31-87	
DRAWN: J. P. PACHECO	DATE: 8-31-87
CHECKED:	DATE:
APPROVED: A. J. C.	DATE: 6-2-92
CODE IDENT. NO. 91506	DWG. SIZE B
NEXT ASSY:	

TYCO ELECTRONICS	
TITLE: ASSEMBLY, SOCKET SURFACE MOUNT	
DWG. NO. 8-1437533-1	REV. 01
PRODUCT CODE: 25/157	
SCALE: NONE	SHEET 3 OF 3

X-ON Electronics

Largest Supplier of Electrical and Electronic Components

Click to view similar products for IC & Component Sockets category:

Click to view products by TE Connectivity manufacturer:

Other Similar products are found below :

[714-43-102-31-012000](#) [0066-3-17-15-30-14-02-0](#) [0134-0-15-15-32-27-04-0](#) [614-DG5](#) [6527-0-00-15-00-00-03-0](#) [670](#) [672](#) [673](#) [712-93-120-41-001000](#) [714-93-104-31-018000](#) [8059-4G1-LF](#) [807-22-001-10-001101](#) [807-22-001-10-003101](#) [807-22-001-10-004101](#) [807-22-001-10-006101](#) [807-22-001-30-011101](#) [807-22-001-30-012101](#) [807-22-001-30-013101](#) [807-22-001-30-014101](#) [8-1437531-4](#) [8150-6P10](#) [833-93-034-10-001000](#) [835-43-014-10-001000](#) [851-41-006-10-001000](#) [851-43-008-20-001000](#) [851-43-014-20-001000](#) [851-93-006-20-001000](#) [851-93-010-20-001000](#) [853-43-020-10-001000](#) [86.010.0053.0](#) [116-43-306-41-003000](#) [116-43-308-41-007000](#) [116-87-308-41-007101](#) [PX-68LCC](#) [PX-84LCC](#) [121-13-318-41-001000](#) [121-13-320-41-001000](#) [121-13-308-41-001000](#) [123-43-314-41-801000](#) [123-43-420-41-001000](#) [123-43-636-41-001000](#) [123-87-320-41-001101](#) [122-13-316-41-001000](#) [123-13-624-41-001000](#) [123-43-306-41-001000](#) [123-43-322-41-801000](#) [123-43-428-41-001000](#) [123-43-624-41-001000](#) [12-3513-11](#) [123-91-320-41-001000](#)