

REVISIONS		LTR	DESCRIPTION	DATE	APPROVED

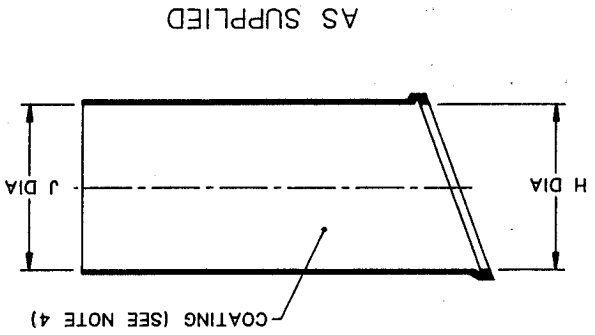
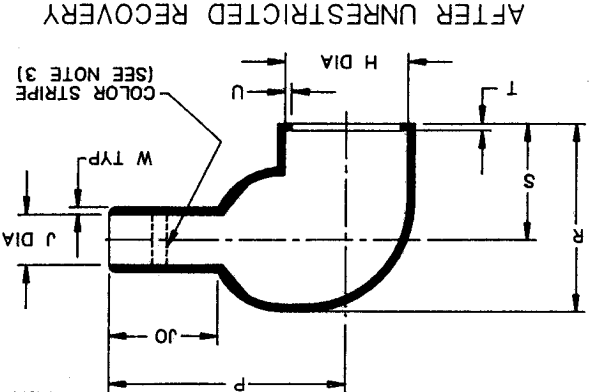


TABLE OF DIMENSIONS

PART NUMBER	-3, -4, -12		-3, -4		-12		J	P	R	S	T	U	JO	W
	MIN	MAX	MIN	MAX	MIN	MAX								
222D121-X-60	.92	.41	.92	.49	.22	.84	.89	.65	.12	.040	.23	.05		
222D132-X-60	1.12	.56	1.12	.58	.26	1.33	1.07	.76	.12	.040	.65	.06		
222D142-X-60	1.22	.70	1.22	.63	.28	1.44	1.22	.83	.12	.040	.50	.07		
222D152-X-60	1.42	.88	1.42	.73	.33	1.72	1.38	.90	.12	.040	.57	.07		
222D163-X-60	1.68	1.11	1.68	.87	.39	2.11	1.73	1.14	.12	.065	.69	.08		
222D174-X-60	2.04	1.36	2.04	1.39	.62	3.07	2.08	1.32	.12	.065	1.32	.13		
222D185-X-60	2.60	1.75	2.60	1.80	.80	3.84	2.60	1.64	.12	.080	1.58	.15		
222D196-X-60	3.22	2.38	3.22	2.25	1.00	4.64	3.30	2.03	.12	.080	1.50	.16		

1. ALL DIMENSIONS ARE IN INCHES

2. DIMENSIONS APPEARING IN TABLE ARE AS FOLLOWS:  
 a - AS SUPPLIED  
 b - AFTER UNRESTRICTED RECOVERY

3. PARTS SHALL HAVE COLOR STRIPE .12 WIDE X 360° AROUND OUTSIDE SURFACE APPROX. AS SHOWN AND COLORS SHALL BE AS FOLLOWS:  
 DASH NO.      COLOR  
 -3              WHITE  
 -4              RED  
 -12             YELLOW

4. COATING IS OPTIONAL FOR -3 AND -4 MATERIALS ONLY, AS SUPPLIED DIMENSIONS APPEARING IN TABLE ARE FOR UNCOATED PARTS. WHEN COATING IS ADDED, ENTRY DIAMETERS WILL BE REDUCED BY .06 MAX. PARTS WILL BE COATED WITH S-1017 ADHESIVE WHEN SPECIFIED AS: 222D1XX-X-60/42

SPECIFICATION CONTROL DRAWING (LIMITED DISTRIBUTION)

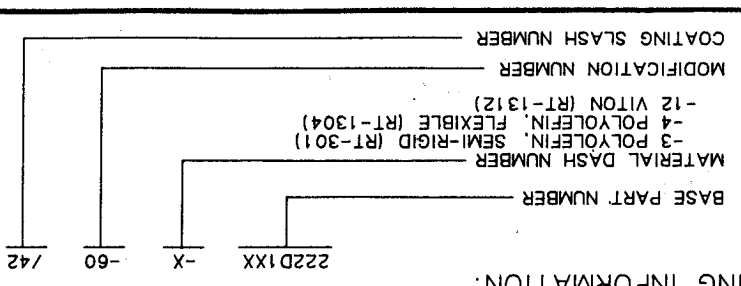
NOTES:

THIS DRAWING AND THE INFORMATION SET FORTH HEREON ARE THE PROPERTY OF RAYCHEM CORPORATION AND ARE TO BE HELD IN TRUST AND CONFIDENCE. PUBLICATION, DUPLICATION, DISCLOSURE OR USE FOR ANY PURPOSE NOT EXPRESSLY AUTHORIZED IN WRITING BY RAYCHEM CORPORATION IS PROHIBITED.		DO NOT SCALE THIS DRAWING	
DRAWN	SEAN MCGARRY	CHECKED	S.D.
DESIGN APPROVED	S. S. 11-13-87	APPROVED BY	
MANUFACTURING	11/13/87	QUALITY CONTROL	11/13/87
SPECIFICATION	11/13/87	TECHNICAL SERVICES	11/13/87
PRODUCT MANAGEMENT	11/13/87		
DWG NO.	222D121-X-60	FSCM CODE NO.	06090
DATE		SIZE B	
SHEET OF			

**Raychem**  
 RAYCHEM CORPORATION  
 300 CONSTITUTION DRIVE  
 MENLO PARK, CALIFORNIA 94025

BOOT, 90° WITH LIP  
 THINWALL

222D121-X-60  
 THRU 222D196-X-60



ORDERING INFORMATION:

## X-ON Electronics

Largest Supplier of Electrical and Electronic Components

*Click to view similar products for [Heat Shrink Cable Boots & End Caps](#) category:*

*Click to view products by [TE Connectivity](#) manufacturer:*

Other Similar products are found below :

[577159N001](#) [007758-000](#) [610368N003](#) [645494-000](#) [M85049/141-02HU](#) [M85049/141-03HU](#) [M85049/141-04HU](#) [687025-000](#) [705331-000](#)  
[718446-000](#) [725666N001](#) [729257-000](#) [F21914-000](#) [F27131-000](#) [F85868-000](#) [770-006A103R](#) [770-006A304W1](#) [770-006A305W1](#) [770-](#)  
[006A308W1](#) [770-011T303W1](#) [770-011T304W1](#) [770-020S702W1](#) [770-020S704W1](#) [806138-000](#) [806542N001](#) [807507-000](#) [808059-000](#)  
[808296-000](#) [808362-000](#) [808828-000](#) [809125-000](#) [809130-000](#) [809218-000](#) [811218-000](#) [811288-000](#) [812014-000](#) [812047-000](#) [813166-000](#)  
[813767N002](#) [814417-000](#) [819115N001](#) [819117N001](#) [823026-000](#) [823070-000](#) [825002-000](#) [841189N001](#) [861471-000](#) [866647-000](#) [937577-](#)  
[000](#) [950764-000](#)