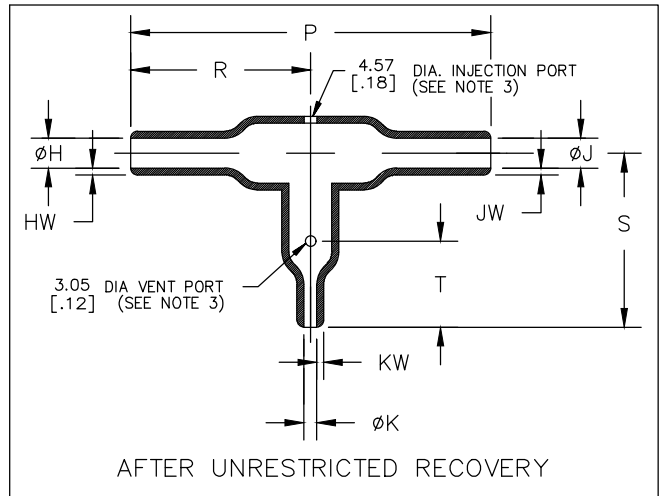
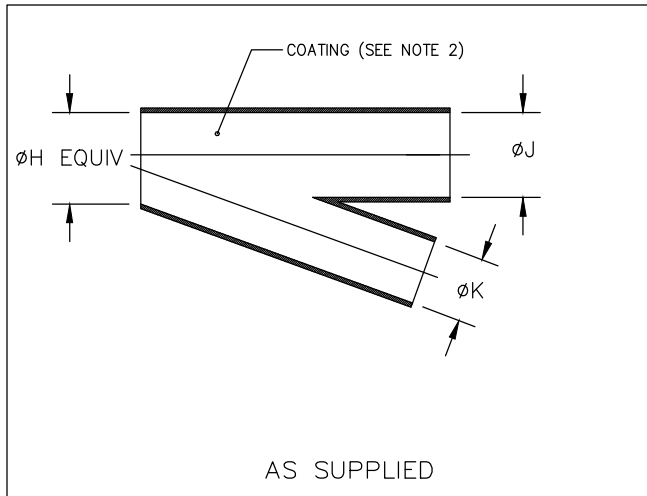


| REVISIONS | | | | | |
|-----------|-----|------------------|-----------|-----|------|
| P | LTR | DESCRIPTION | DATE | DWN | APVD |
| | T | PRODUCTION ISSUE | 29JAN2019 | PNT | MT |



| PART NUMBER | H & J | | K | | P | R | S | T | HW & JW | KW |
|-------------|----------------|----------------|----------------|---------------|-----------------|-----------------|----------------|----------------|---------------|---------------|
| | Min | Max | Min | Max | $\pm 10\%$ | $\pm 10\%$ | $\pm 10\%$ | $\pm 10\%$ | $\pm 20\%$ | $\pm 20\%$ |
| | a | b | a | b | b | b | b | b | b | b |
| 322A112 | 13.2 [.52] | 5.8 [.23] | 6.6 [.26] | 3.0 [.12] | 52.3 [2.06] | 26.2 [1.03] | 19.3 [.76] | N/A | 1.52 [.06] | 1.02 [.04] |
| 322A123 | 26.9 [1.06] | 12.4 [.49] | 6.6 [.26] | 3.0 [.12] | 83.3 [3.28] | 41.7 [1.64] | 27.2 [1.07] | 10.7 [.42] | 2.54 [.10] | 1.02 [.04] |
| 322A134 | 26.9 [1.06] | 12.7 [.50] | 13.2 [.52] | 5.8 [.23] | 107.7 [4.24] | 53.8 [2.12] | 38.6 [1.52] | 20.3 [.80] | 2.54 [.10] | 1.52 [.06] |
| 322A148 | 55.6 [2.19] | 25.4 [1.00] | 13.2 [.52] | 5.8 [.23] | 180.6 [7.11] | 90.4 [3.56] | 57.4 [2.26] | 25.4 [1.00] | 4.57 [.18] | 1.52 [.06] |
| 322A158 | 55.6 [2.19] | 25.4 [1.00] | 26.9 [1.06] | 12.4 [.49] | 222.3 [8.75] | 111.3 [4.38] | 77.7 [3.06] | 38.1 [1.50] | 4.57 [.18] | 2.54 [.10] |

RELEASED FOR PUBLICATION

ALL RIGHTS RESERVED.

© COPYRIGHT - TE Connectivity Ltd.

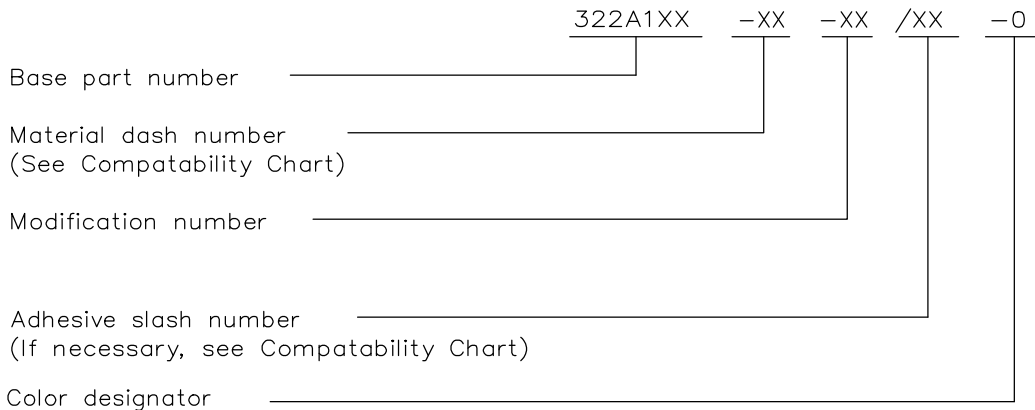
THIS DRAWING IS UNPUBLISHED.

| | | | | | | |
|--|------------------|-----------------------------------|----------------------|---------------|--------|--------------|
| DIMENSIONS: mm [INCHES] | DWN | 29JAN2019 | MATERIAL | SEE SHEET 2 | FINISH | - |
| | CHK | 29JAN2019 | TE Connectivity Ltd. | | | |
| TOLERANCES UNLESS OTHERWISE SPECIFIED: | APVD | 29JAN2019 | | | | |
| 0 PLC $\pm -$ | PRODUCT SPEC | - | | | | |
| 1 PLC $\pm -$ | APPLICATION SPEC | - | | | | |
| 2 PLC $\pm -$ | NAME | TRANSITION, 90 DEG. SIDE BREAKOUT | | | | |
| 3 PLC $\pm -$ | SIZE | CAGE CODE | DRAWING NO | RESTRICTED TO | | |
| 4 PLC $\pm -$ | WEIGHT | A4 | 00779 | - | | |
| ANGLES $\pm -$ | CUSTOMER DRAWING | | | SCALE | DNS | SHEET 1 OF 2 |
| | | © 322A112-XX-0THRU158-XX-0 | | | REV | T |

| REVISIONS | | | | | |
|-----------|-----|-------------|------|-----|------|
| P | LTR | DESCRIPTION | DATE | DWN | APVD |
| | - | SEE SHEET 1 | - | - | - |

| COMPATABILITY CHART | | | | |
|---------------------|--------------------------------------|---------|-------------------|-------------------|
| MATERIAL DASH NO. | MATERIAL DESCRIPTION | RT SPEC | COATING SLASH NO. | COATING S NO. |
| -3 | Polyolefin, Semi-rigid | RT-301 | /42;/86;/180 | S1017;S1048;S1030 |
| -4 | Polyolefin, Flexible | RT-1304 | /42;/86;/180 | S1017;S1048;S1030 |
| -12 | Fluoroelastomer, Flexible | RT-1312 | N/A | N/A |
| -25 | Elastomer, Fluid Resistant | RW-2070 | /42;/86;/225 | S1017;S1048;S1206 |
| -100 | Polyolefin, Simi-Flexible ZEROHAL | RW-2082 | /86;/180 | S1048;S1030 |

ORDERING INFORMATION



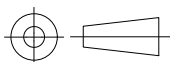
NOTES

- Dimensions appearing in table are as follows:
 - a - As Supplied
 - b - After Unrestricted Recovery
- Coating is optional. As supplied dimensions appearing in table are for uncoated parts. When coating is added, entry diameters will be reduced by 1.5mm[.06] max.
- Molding ports are optional. When -00 modification number is specified molding ports will be located as shown. On size 322A112 the vent port will be eliminated.

THIS DRAWING IS UNPUBLISHED. ALL RIGHTS RESERVED.

COPYRIGHT - TE Connectivity Ltd.

| | | | | | |
|--|---------------------------------|----------------------|-------------|---|---------------|
| DIMENSIONS: mm [INCHES] | DWN PRAVEEN N T 29JAN2019 | MATERIAL - | FINISH - | | |
| | CHK N NAGAR 29JAN2019 | TE Connectivity Ltd. | | | |
| TOLERANCES UNLESS OTHERWISE SPECIFIED: | APVD M TAYLOR 29JAN2019 | | | NAME TRANSITION, 90 DEG. SIDE BREAKOUT | |
| 0 PLC ± - | PRODUCT SPEC | SIZE | CAGE CODE | DRAWING NO | RESTRICTED TO |
| 1 PLC ± - | - | A4 | 00779 | C-322A112-XX-0THRU158-XX-0 | - |
| 2 PLC ± - | APPLICATION SPEC | CUSTOMER DRAWING | | | |
| 3 PLC ± - | - | SCALE | DNS | | SHEET 2 OF 2 |
| 4 PLC ± - | WEIGHT | REV | | T | |
| ANGLES ± - | | | | | |



X-ON Electronics

Largest Supplier of Electrical and Electronic Components

Click to view similar products for [Heat Shrink Cable Boots & End Caps](#) category:

Click to view products by [TE Connectivity](#) manufacturer:

Other Similar products are found below :

[577159N001](#) [645494-000](#) [CX4132-000](#) [687025-000](#) [705331-000](#) [718446-000](#) [725666N001](#) [729257-000](#) [F27131-000](#) [F85868-000](#) [770-003S106W2](#) [770-013210W1](#) [770-013311](#) [770-013312](#) [806542N001](#) [807507-000](#) [808059-000](#) [808362-000](#) [808618-000](#) [809125-000](#) [809130-000](#) [809218-000](#) [812014-000](#) [812047-000](#) [813166-000](#) [813767N002](#) [814741-000](#) [819117N001](#) [823026-000](#) [823070-000](#) [825002-000](#) [841189N001](#) [861471-000](#) [866647-000](#) [879515-000](#) [937577-000](#) [957073-000](#) [982033-2](#) [A77813-000](#) [R280576000](#) [D96192-000](#) [163549-000](#) [MTPSRBCL-C](#) [1954015-1](#) [200W531-3-0](#) [202A163-4-0-CS5067](#) [202A343-3-00-0](#) [202B221-13-0](#) [202B231-13-0](#) [202B563-25-07-0](#)