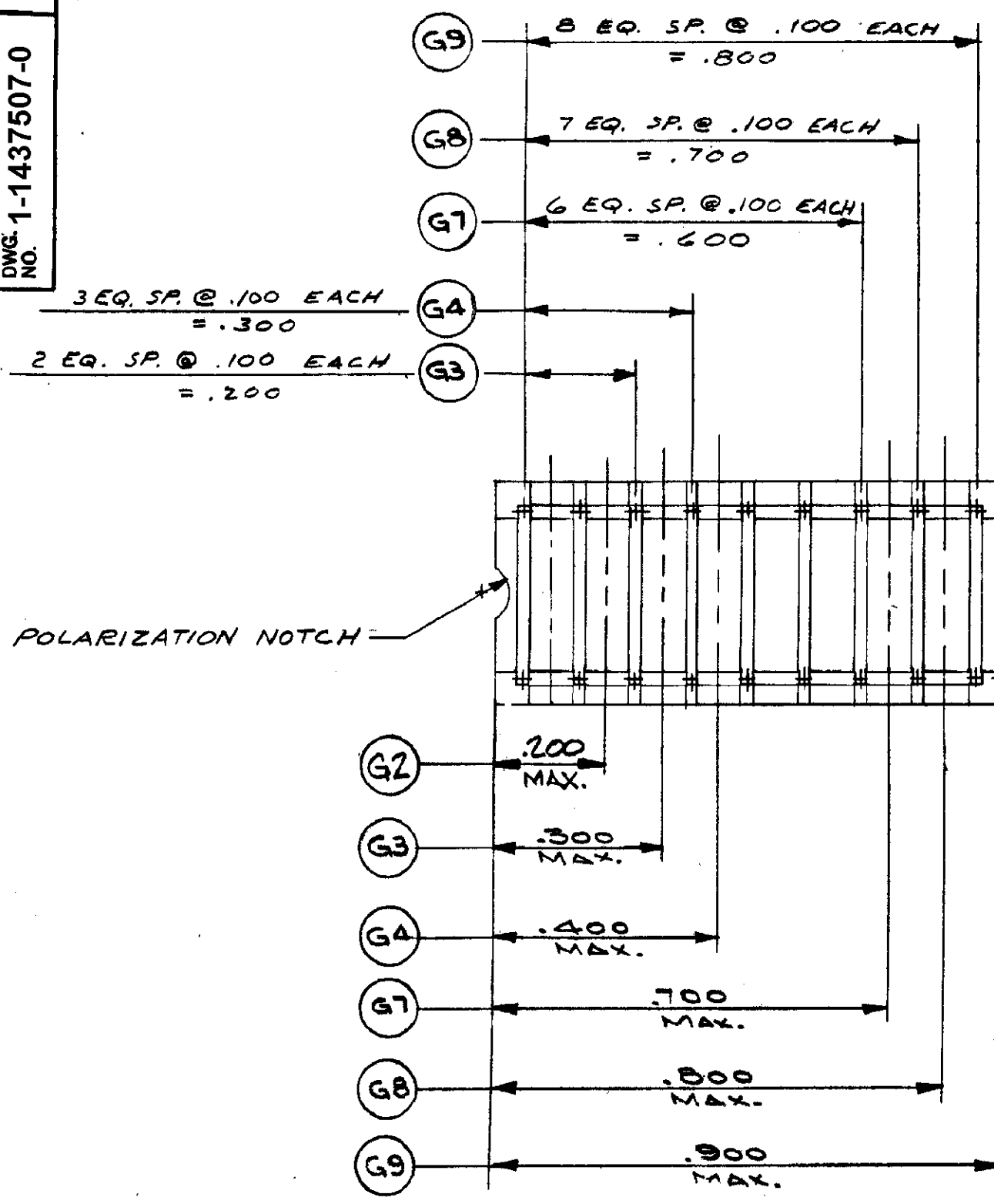
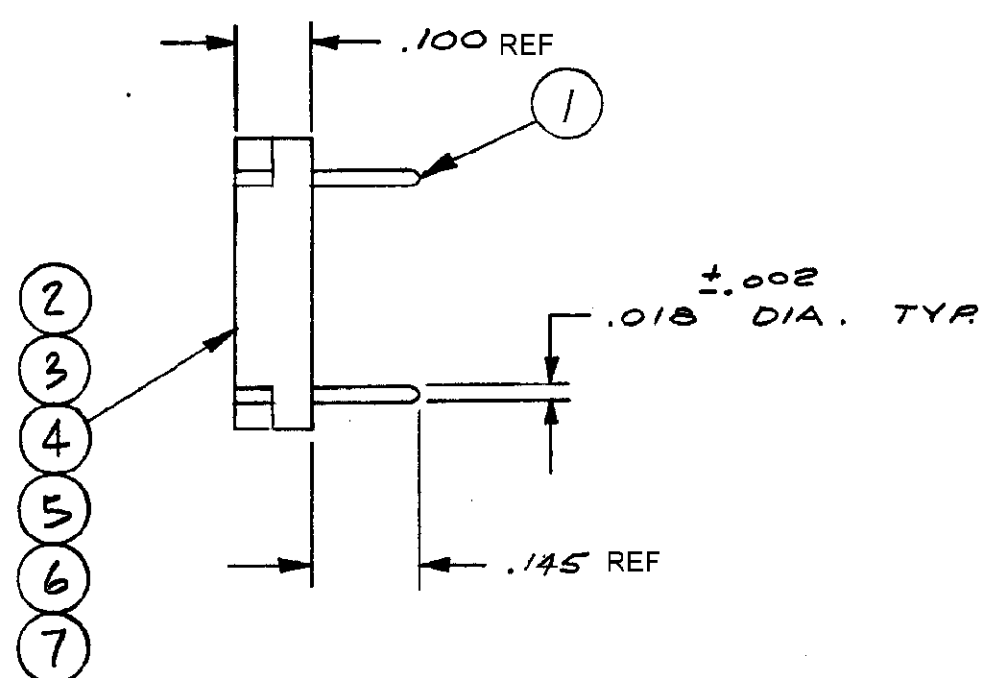


REV. NO. 1-1437507-0



- NOTES:
- 1. MATERIAL AND FINISH:
INSULATOR — THERMOPLASTIC POLYESTER UL RATED 90 V-0; COLOR-BLACK
(G) CONTACT — PHOSPHOR BRONZE, GOLD OVER NICKEL PLATE
(GT) CONTACT — PHOSPHOR BRONZE, TIN PLATE.
 - 2. OBSOLETE PARTS: OBSOLETE CIS STREAMLINING PER D.RENAUD/D.SINISI



QTY	1-1437507-2	1-1437507-1	N/A	3-1437506-2	2-1437507-0	1-1437507-8	1-1437507-6	1-1437507-4	1-1437507-0	2-1437507-1	1-1437507-9	1-1437507-7	1-1437507-5	1-1437507-3	PART NOS
	1														

QTY	9	8	7	6	5	4	3	2	1	DESCRIPTION	ITEM NO.				
										SHORTING PIN	1				
				2	1					SHORTING PIN	1				
				1				1		INSULATOR	7				
1					1					INSULATOR	6				
						1				INSULATOR	5				
							1			INSULATOR	4				
								1		INSULATOR	3				
									1	INSULATOR	2				
								2	9	8	7	4	3	SHORTING PIN	1

G25	G24	G23	G22	G21	G20	G19	G18	G17	G16	G15	G14	G13	G12	G11	G10	G9	G8	G7	G6	G5	G4	G3	QUANTITY	DESCRIPTION
-----	-----	-----	-----	-----	-----	-----	-----	-----	-----	-----	-----	-----	-----	-----	-----	----	----	----	----	----	----	----	----------	-------------

UNLESS OTHERWISE SPECIFIED DIMENSIONS ARE IN INCHES TOLERANCES ON FRACTIONS DECIMALS ANGLES REF	ORIGINAL DATE OF DRAWING: 4-4-73	TE Connectivity	
	DRAWN: RJS DATE: 4-4-74	TITLE: PROGRAMMING PLUG	
MATERIAL: — 67 —	CHECKED: K.J.H. DATE: 4-5-74	DWG. NO. 1-1437507-0	REV. A1
FINISH: — 67 —	APPROVED: R.J.H. DATE: 4-5-74	CODE IDENT. NO. 91506	DWG. SIZE C
	NEXT ASSY.	SCALE: 4X1	SHEET 1 OF 1

A1	REVISED PER ECO-11-005140	RK	HMR	SMART
LTR	(REVISION RECORD)	DR	CHK	DATE

CUSTOMER DWG.

X-ON Electronics

Largest Supplier of Electrical and Electronic Components

Click to view similar products for [Modular Connectors / Ethernet Connectors](#) category:

Click to view products by [TE Connectivity](#) manufacturer:

Other Similar products are found below :

[RJE231881317T](#) [MP1010RX-1000](#) [MP44RX-1000](#) [GAX-3-66](#) [GAX-8-62](#) [93606-0253](#) [GD-A-44](#) [GDCX-PA-66-50](#) [GDCX-PN-64](#) [GDCX-PN-66](#) [GDCX-PN-66-50](#) [GDLX-A-66](#) [GDLX-A-88](#) [GDLX-N-66](#) [GDLX-S-66](#) [GDLX-S-88K](#) [GDTX-S-88-50](#) [GDX-PA-1010](#) [GLX-N-1010M-BLK](#) [GLX-S-88M-BLK](#) [GMX-N-1010](#) [GMX-S-1010](#) [GMX-S-66](#) [GMX-SMT2-N-1010](#) [GMX-SMT2-N-64-50](#) [GMX-SMT2-N-88](#) [GMX-SMT2-S6-88](#) [GMX-SMT4-N-88](#) [GPX-2-64](#) [GRT1-BT1-5](#) [GSGX-N-2-88](#) [GSX-NS2-88-3.05](#) [GSX-NS2-88-3.05-50](#) [GSX-NS-88-3.05-30](#) [GSX-NS-88-3.05-50](#) [GSX-NS-88-3.68](#) [1-1775629-2](#) [GWLX-S-88-GR](#) [GWLX-S9-88-YG](#) [1300500326](#) [1300500227](#) [1300530003](#) [1300570002](#) [1324640-4](#) [RJ11FTVC2G](#) [RJ11FTVC2N](#) [RJFTVX2SA1G](#) [132764-001](#) [1400000](#) [1413235](#)