

# IACM-15A ✓ ACTIVE

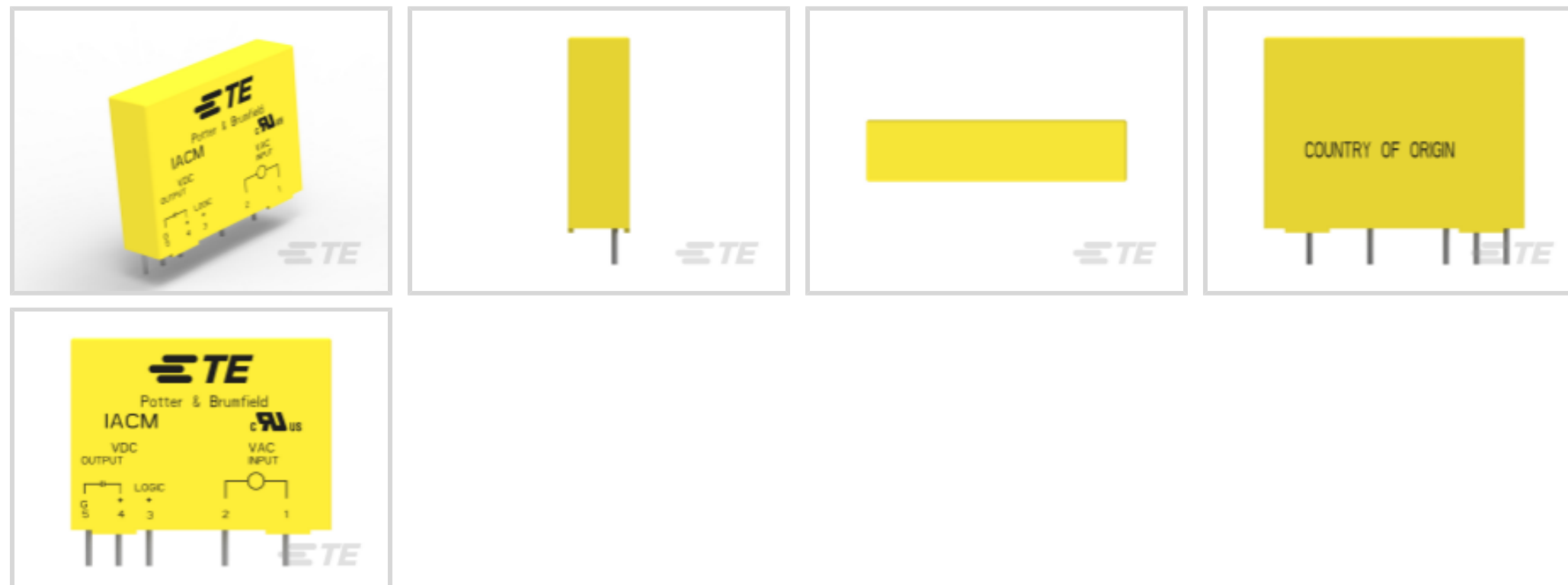
TE Internal #: 8-1393028-8

Power Relays, Solid State, 1 Form A (SPST-NO), Printed Circuit Board

[View on TE.com >](#)



Relays, Contactors & Switches > Relays > Power Relays



Power Relay Type: **Solid State**

Contact Arrangement: **1 Form A (SPST-NO)**

Contact Current Rating (Max): **.05 A**

Relay Mounting Type: **Printed Circuit Board**

## Features

### Product Type Features

Output Type	DC
Power Relay Type	Solid State

### Configuration Features

Output Switching	Zero
------------------	------

### Electrical Characteristics

Output Current Rating	.05 A
Output Voltage (Max)	30 V
Input Voltage Typical	240 VAC
Output Voltage Rating (DC Relays)	30 VDC
Input Voltage	180 – 280 VAC
Logic Voltage	15 VDC
Insulation Initial Dielectric Between Contacts & Coil	4000 Vrms

### Body Features

Product Weight	22.1 g [.87 oz]
Case Color	Yellow

### Contact Features



Switch Arrangement	1 Form A (SPST-NO)
Contact Arrangement	1 Form A (SPST-NO)
Contact Current Rating (Max)	.05 A

#### Termination Features

Relay Termination Type	Printed Circuit Terminals
------------------------	---------------------------

#### Mechanical Attachment

Coupling	Optical
Relay Mounting Type	Printed Circuit Board

#### Housing Features

Relay Housing Style	Slimline
---------------------	----------

#### Dimensions

Dimensions (L x W x H) (Approximate)	43.6 x 10.3 x 25.5 mm[1.717 x .406 x 1.004 in]
--------------------------------------	--

#### Usage Conditions

Operating Temperature Range	-30 – 80 °C
-----------------------------	-------------

#### Operation/Application

R-Switch & slimSSR Relays	Yes
---------------------------	-----

### Product Compliance

[For compliance documentation, visit the product page on TE.com>](#)

EU RoHS Directive 2011/65/EU	Compliant
EU ELV Directive 2000/53/EC	Compliant
China RoHS 2 Directive MIIT Order No 32, 2016	No Restricted Materials Above Threshold
EU REACH Regulation (EC) No. 1907/2006	Current ECHA Candidate List: JUL 2021 (219) Candidate List Declared Against: JAN 2021 (211) SVHC > Threshold: Not Yet Reviewed
Halogen Content	Not Yet Reviewed for halogen content
Solder Process Capability	Not reviewed for solder process capability

#### Product Compliance Disclaimer

This information is provided based on reasonable inquiry of our suppliers and represents our current actual knowledge based on the information they provided. This information is subject to change. The part numbers that TE has identified as EU RoHS compliant have a maximum concentration of 0.1% by weight in homogenous materials for lead, hexavalent

chromium, mercury, PBB, PBDE, DBP, BBP, DEHP, DIBP, and 0.01% for cadmium, or qualify for an exemption to these limits as defined in the Annexes of Directive 2011/65/EU (RoHS2). Finished electrical and electronic equipment products will be CE marked as required by Directive 2011/65/EU. Components may not be CE marked. Additionally, the part numbers that TE has identified as EU ELV compliant have a maximum concentration of 0.1% by weight in homogenous materials for lead, hexavalent chromium, and mercury, and 0.01% for cadmium, or qualify for an exemption to these limits as defined in the Annexes of Directive 2000/53/EC (ELV). Regarding the REACH Regulation, the information TE provides on SVHC in articles for this part number is based on the latest European Chemicals Agency (ECHA) 'Guidance on requirements for substances in articles' posted at this URL: <https://echa.europa.eu/guidance-documents/guidance-on-reach>

## Compatible Parts



TE Part # 8-1393028-4  
SLIM INPUT AC MOD,24V DC LOGIC-240VAC IP

## Customers Also Bought



TE Part #DTT-20-03  
CRIMP TOOL



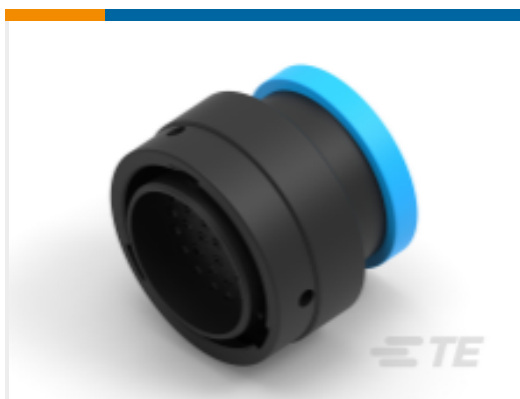
TE Part #K1007153  
Toggle Switch 08-1-1-13



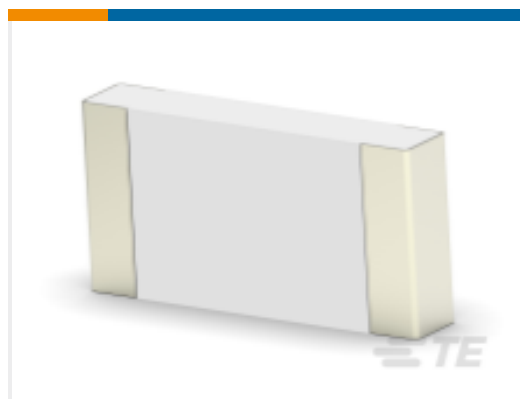
TE Part #K1060489  
Relay 29-113-12



TE Part #DRC16-70SBE-P013UK  
PLG, 70P, BLK, E, SEAL BOND, B



TE Part #YHDP26-24-35PEL017  
PLG, 35P, BLK, E, RNG, 16/20, P



TE Part #2-2176245-2  
CRGS1206 5% 56R



TE Part #K1002956  
Toggle Switch 08-4-1-13



TE Part #K1008699  
Relay 26-60-05



TE Part #HDP24-24-16SE-L015  
REC, 16P, BLK, E, THD, 12, S



TE Part #SRK-PC-080-25-601  
PIN, SOLID, SIZE M8, 25mm2, AG

## Documents



### CAD Files

#### 3D PDF

3D

#### Customer View Model

[ENG\\_CVM\\_CVM\\_8-1393028-8\\_C.2d\\_dxf.zip](#)

English

#### Customer View Model

[ENG\\_CVM\\_CVM\\_8-1393028-8\\_C.3d\\_igs.zip](#)

English

#### Customer View Model

[ENG\\_CVM\\_CVM\\_8-1393028-8\\_C.3d\\_stp.zip](#)

English

By downloading the CAD file I accept and agree to the [Terms and Conditions](#) of use.

### Datasheets & Catalog Pages

[IACM Slim Line AC Input Module Data Sheet](#)

English

## X-ON Electronics

Largest Supplier of Electrical and Electronic Components

*Click to view similar products for [I/O Modules](#) category:*

*Click to view products by [TE Connectivity](#) manufacturer:*

Other Similar products are found below :

[70L-IDC5S](#) [70L-OAC-L](#) [70Z3289-4](#) [G21960000700](#) [G21960002700](#) [G34960002700](#) [OACU](#) [C4SWOUT](#) [PB16H](#) [G34960001700](#) [G3TA-OA101SZ-1](#) [DC24](#) [G77-S](#) [5607189](#) [DA5](#) [ODC-24A](#) [IDC5P](#) [FC6A-N16B1](#) [6421](#) [FC6A-N32B3](#) [70MRCQ32-HL](#) [G3TAOD201SDC24](#) [C200H-LK201-V1](#) [G3TA-OA202SZ-US](#) [DC12](#) [GT1-OD16](#) [GT1-AD04CST](#) [B7AM-6BS](#) [70GRCQ24-HS](#) [6422](#) [84110410](#) [GT1-OD16MX](#) [G7VC-OC16-B7](#) [70MRCK24-DIN](#) [6202](#) [6402](#) [FC6A-J2C1](#) [FC6A-KC1C](#) [FC6A-R081](#) [FC6A-J8CU1](#) [GP32900003700](#) [641-480-5022](#) [PB16H](#) [84145010](#) [84110210](#) [FRUSB1601](#) [PCL-720+-BE](#) [FRRJ451601](#) [AP24MX3DB25F](#) [ADAM-5053S-AE](#) [WISE-S614-A](#) [ADAM-5051S-AE](#)