

**SAFETY ORGANIZATIONS**

THIS FILTER HAS BEEN FORMALLY RECOGNIZED, CERTIFIED OR APPROVED BY THE LISTED AGENCY. THEREFORE, ALL TEST/REQUIREMENTS SPECIFIED IN THE LATEST REVISION OF THE FOLLOWING AGENCY STANDARDS HAVE BEEN MET:  
 UL RECOGNIZED: UL 1283  
 UL LISTED: UL 935  
 CSA CERTIFIED: CSA C22.2 No. 8  
 VDE APPROVED: EN 60939-2

**OPERATING SPECIFICATIONS**

LINE CURRENT/VOLTAGE: 2.0 AMP/50°C, 277 VAC 50-60Hz (UL&CSA)  
 2.0 AMP/50°C, 277 VDC (UL&CSA)  
 2.0 AMP/50°C, 250 VAC 50-60Hz (VDE)  
 2.0 AMP/50°C, 250 VDC (VDE)

MAXIMUM LEAKAGE CURRENT, EACH LINE TO GROUND:  
 0.28 mA @ 277V 60Hz  
 0.21 mA @ 250V 50Hz

OPERATING AMBIENT TEMP. RANGE: -10°C TO +50°C @ RATED CURRENT, I<sub>r</sub>.

IN AN AMBIENT, T<sub>a</sub>, HIGHER THAN 50°C, THE MAXIMUM OPERATING CURRENT, I<sub>o</sub>, IS AS FOLLOWS:  

$$I_o = I_r \sqrt{\frac{85 - T_a}{35}}$$

**RELIABILITY SPECIFICATIONS:**

STORAGE TEMPERATURE: -40°C TO +85°C  
 HUMIDITY: 21 DAYS @ 40°C 95% RH.  
 CURRENT OVERLOAD TEST: 6 TIMES I<sub>r</sub> FOR 8 SECONDS

**TEST SPECIFICATIONS:**

INDUCTANCE: 0.89 mH NOMINAL (WHITE)  
 1.04 mH NOMINAL (BLACK)  
 CAPACITANCE: (MEASURED @ 1 kHz, 0.250VAC MAX., 25°C±1°C)  
 LINE TO GROUND: 0.0044µF ± 20 %  
 LINE TO LINE: 0.33µF ± 20 %  
 DISCHARGE RESISTOR: 1 MEGOHM  
 L/G AND L/L I.R.  
 NO DISCHARGE RESISTOR: 6000MEG OHM (MIN.) 100VDC 20°C AND 50% RH

**RECOMMENDED RECEIVING INSPECTION HIPOT:**

LINE TO GROUND: 2300 VDC FOR 1 MINUTE  
 LINE TO LINE: 1853 VDC FOR 1 MINUTE

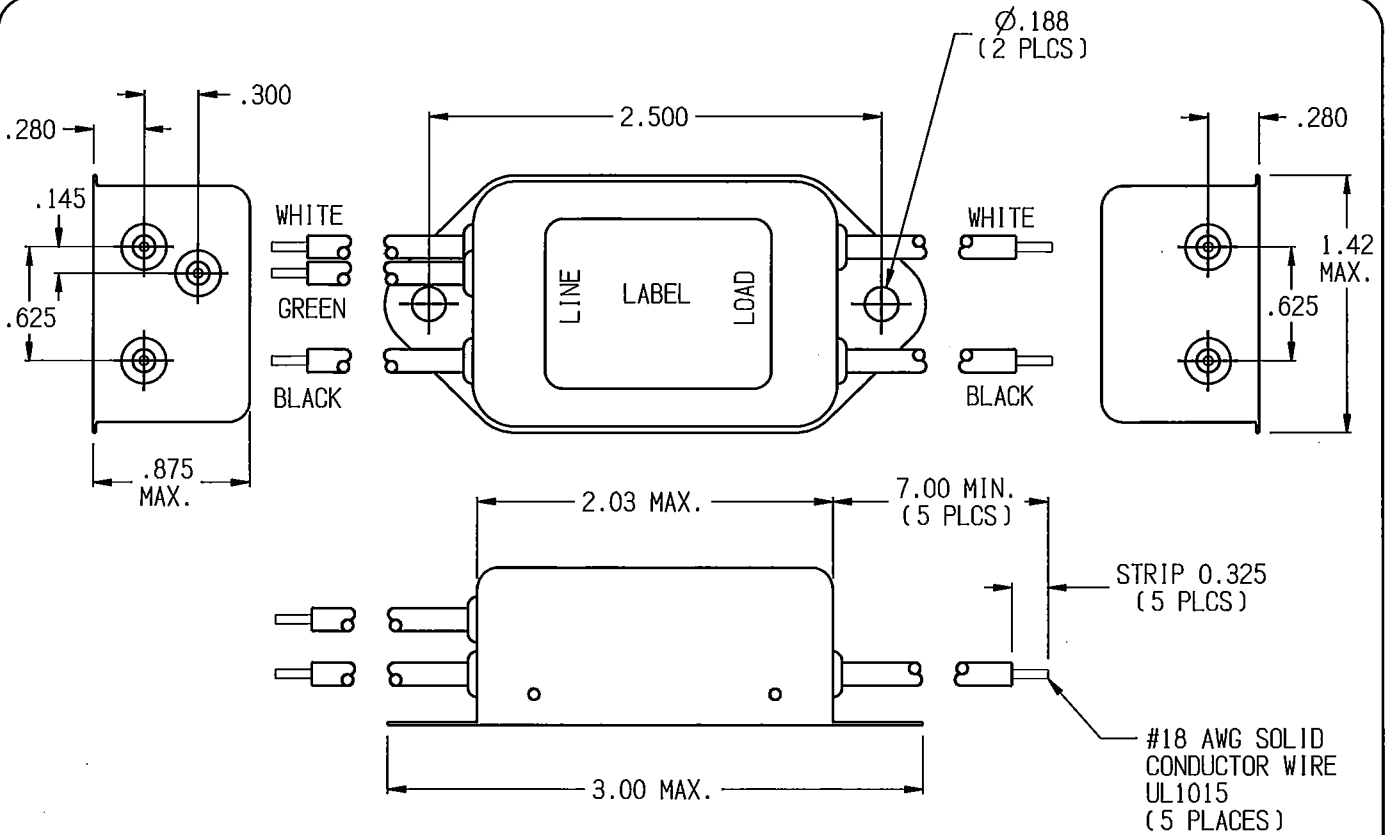
**FILTER APPROVAL:**

THE BEST WAY TO SELECT AND QUALIFY A FILTER IS FOR YOUR ENGINEERING TO TEST THE UNIT IN YOUR EQUIPMENT.

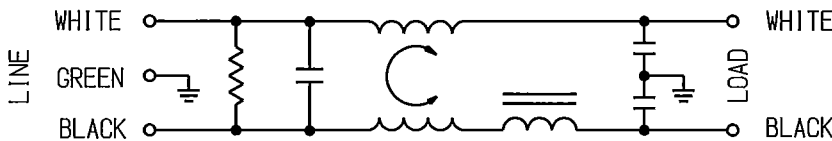
**CUSTOMER DRAWING**

CATALOG # 2FB3

ECN#	APPRVD	DATE
/	PJO	28FEB12



**ELECTRICAL SCHEMATIC**



**50Ω - 50Ω (MINIMUM) INSERTION LOSS**

FREQUENCY MHz	.03	.05	.1	.15	.5	1.0	2.0	5.0	10	20	30	/
COMMON dB	3	7	13	16	28	34	42	45	44	41	41	/
DIFF. dB	6	11	20	25	43	51	56	51	44	40	39	/

**PARTS SHALL COMPLY WITH TYCO ELECTRONICS 138-702 SPECIFICATION FOR HAZARDOUS SUBSTANCES**

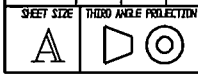
UNLESS OTHERWISE SPECIFIED TOLERANCE TO BE ±0.025 MATERIAL & FINISH: AS SUPPLIED

NOTES:

**TE** TE Connectivity

**RFI FILTER**

TYCO ELECTRONICS PART NO. 8-160905-9



THIS INFORMATION IS CONFIDENTIAL AND PROPRIETARY TO TYCO ELECTRONICS CORPORATION AND ITS WORLDWIDE SUBSIDIARIES AND AFFILIATES. IT MAY NOT BE DISCLOSED TO ANYONE OTHER THAN TYCO ELECTRONICS PERSONNEL, WITHOUT WRITTEN AUTHORIZATION FROM TYCO ELECTRONICS CORPORATION, WARRENSBURG, PENNSYLVANIA USA.

SCALE: 1:1	DATE: 24MAY11	DRAWING NUMBER: 2FB3	REV. 3
DRW. BY: LJD	DRG: PJO		

## X-ON Electronics

Largest Supplier of Electrical and Electronic Components

*Click to view similar products for [Power Line Filters](#) category:*

*Click to view products by [TE Connectivity](#) manufacturer:*

Other Similar products are found below :

[6609019-3](#) [6609026-5](#) [6609030-6](#) [6609973-2](#) [D30A](#) [7-1609090-5](#) [F2810](#) [F4456A](#) [F7382Z](#) [F7863Z](#) [FAHAV3100ZC000](#) [806276](#) [FN2020B-1-06](#) [FN2080B-10-06](#) [FN2410H-32-33](#) [FN2410H-80-34](#) [FP144](#) [FS4153-20-06](#) [FS4353-500-99](#) [12-MMB-030-11-D](#) [DB4-393](#) [15811T200](#) [20B1](#) [LC630](#) [2B1](#) [1609080-2](#) [1609993-8](#) [1-6609070-1](#) [F1100AA02](#) [F1150CC10](#) [F1500CA10](#) [F1500CA15](#) [F4041Z](#) [F7585E](#) [1B1](#) [FN2070A-16-06](#) [FN2090A-20-06](#) [FN2090B-12-06](#) [FN2090Z-1-06](#) [FN2410H-25-33](#) [FN2410H-60-34](#) [FN2410H-8-44](#) [FN2412H-8-44](#) [FN323B-6-01](#) [FN3258H-130-35](#) [FN610R-3-06](#) [20EHQ7](#) [20EHZ7](#) [20K1](#) [30B6](#)