

REV. B
DCO 300825

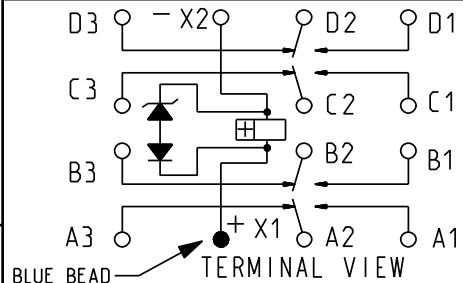
TOLERANCES $\pm .010$ " - UNLESS OTHERWISE SPECIFIED

COIL: @ 25°C
 RESISTANCE _____ 400 OHMS $\pm 10\%$
 NOMINAL VOLTAGE _____ 28 VDC
 MUST OPERATE _____ 13.5 VDC MAX.
 _____ TRANSIENT SUPPRESSION - 42 VDC MAX.
 MUST RELEASE _____ 5.5 VDC MAX., 2.3 VDC MIN.

ENVIRONMENT:
 VIBRATION _____ 70 _____ Hz TO _____ 3000 _____ Hz @ _____ 30 _____ g's
 SHOCK _____ 200 _____ g's _____ 6 _____ MS. DURATION
 TEMPERATURE _____ -70 _____ °C TO _____ +125 _____ °C

NOTES: OPERATE, RELEASE 6 MS MAX.
 CONTACT STABILIZATION 2.5 MS MAX.
 CONTACT BOUNCE 1 MS MAX.
 CONTACT BREAK BOUNCE 0.1 MS MAX.

CUSTOMER DATA SHEET



CONTACT RATING: _____ LOW LEVEL
 5 AMPS 28 VDC, 115 VAC 400 Hz RESISTIVE
 100,000 OPERATIONS

DR. B.D. 25APR2008 | CK. 5/9/08 J.M.B.

Tyco Electronics ©COPYRIGHT 2005
 TYCO ELECTRONICS CORPORATION
 ALL INTERNATIONAL RIGHTS RESERVED

CUST. _____ M83536/6-022L
 CUST. NO. _____ REV. ---

TE NUMBER
 8-1617760-2

CII PART NUMBER
 FCB-405-0622L

X-ON Electronics

Largest Supplier of Electrical and Electronic Components

Click to view similar products for [Industrial Relays](#) category:

Click to view products by [TE Connectivity](#) manufacturer:

Other Similar products are found below :

[6-1617801-8](#) [6-1618107-9](#) [7-1618273-3](#) [EV250-4A-02](#) [EV250-6A-01](#) [FCA-125-CX8](#) [FCA-325-159](#) [FCA-410-138](#) [8000-S3121](#) [8-1618273-6](#)
[8-1618393-1](#) [GCA63A220VAC60HZ](#) [GCA63A277VAC60HZ](#) [GCA63A600VAC60HZ](#) [1-1672275-3](#) [1-1833005-4](#) [H-16/S1](#) [A711Z](#) [H-8C](#)
[H-8/S11](#) [H-8/S68](#) [ACC530U20](#) [ACC730U30](#) [RF303ZM4-12](#) [DH18DA](#) [1423675-8](#) [AR4-15F13-C01](#) [AR7-41F11](#) [AVR907](#) [15732A200](#)
[B07B032AC1-0329](#) [B329](#) [B490A](#) [1618279-1](#) [BHR124Y](#) [1810DDB-SX](#) [N417](#) [P30C42A12D1-120](#) [2-1617748-6](#) [2-1618375-1](#) [2-1618396-6](#)
[2-1618398-1](#) [JMAPD-5XL](#) [JMGACD-5M](#) [JMGSC-5LW](#) [JMGSCD-5L](#) [PBO-18A1218](#) [PBO-40A3040](#) [K8DSPH1200480VAC](#) [KA-3C-12A](#)