

FIG. 1

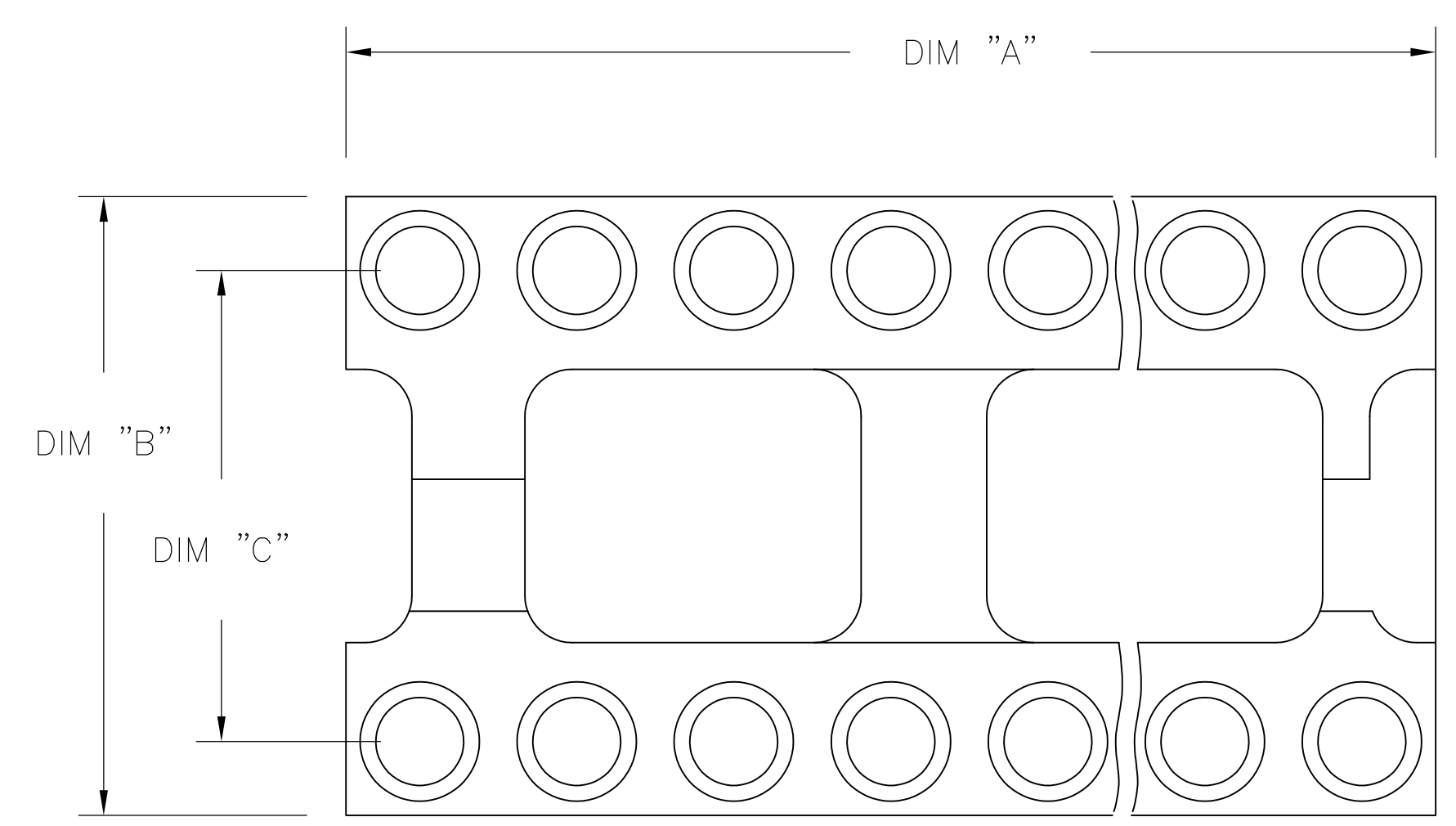


FIG. 2

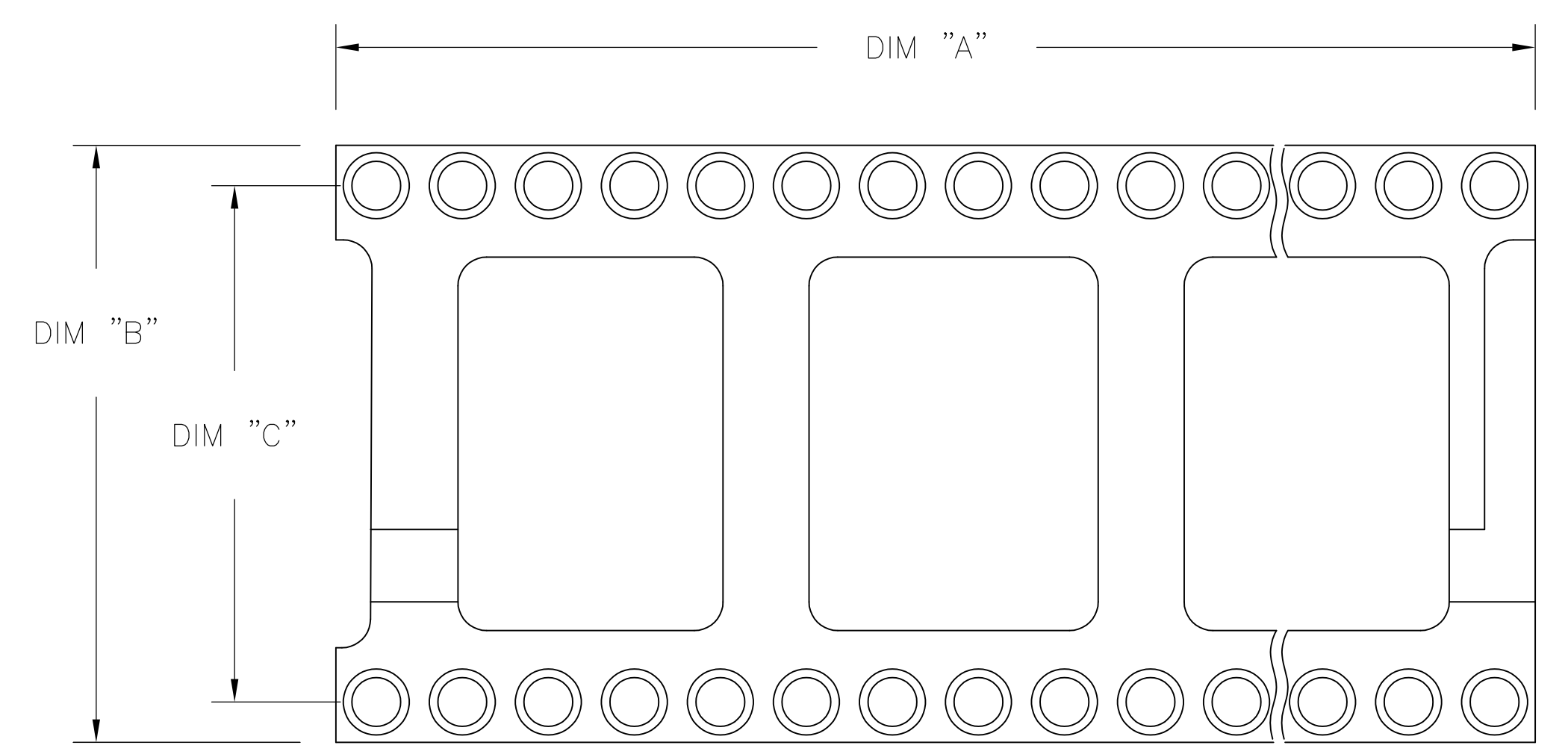
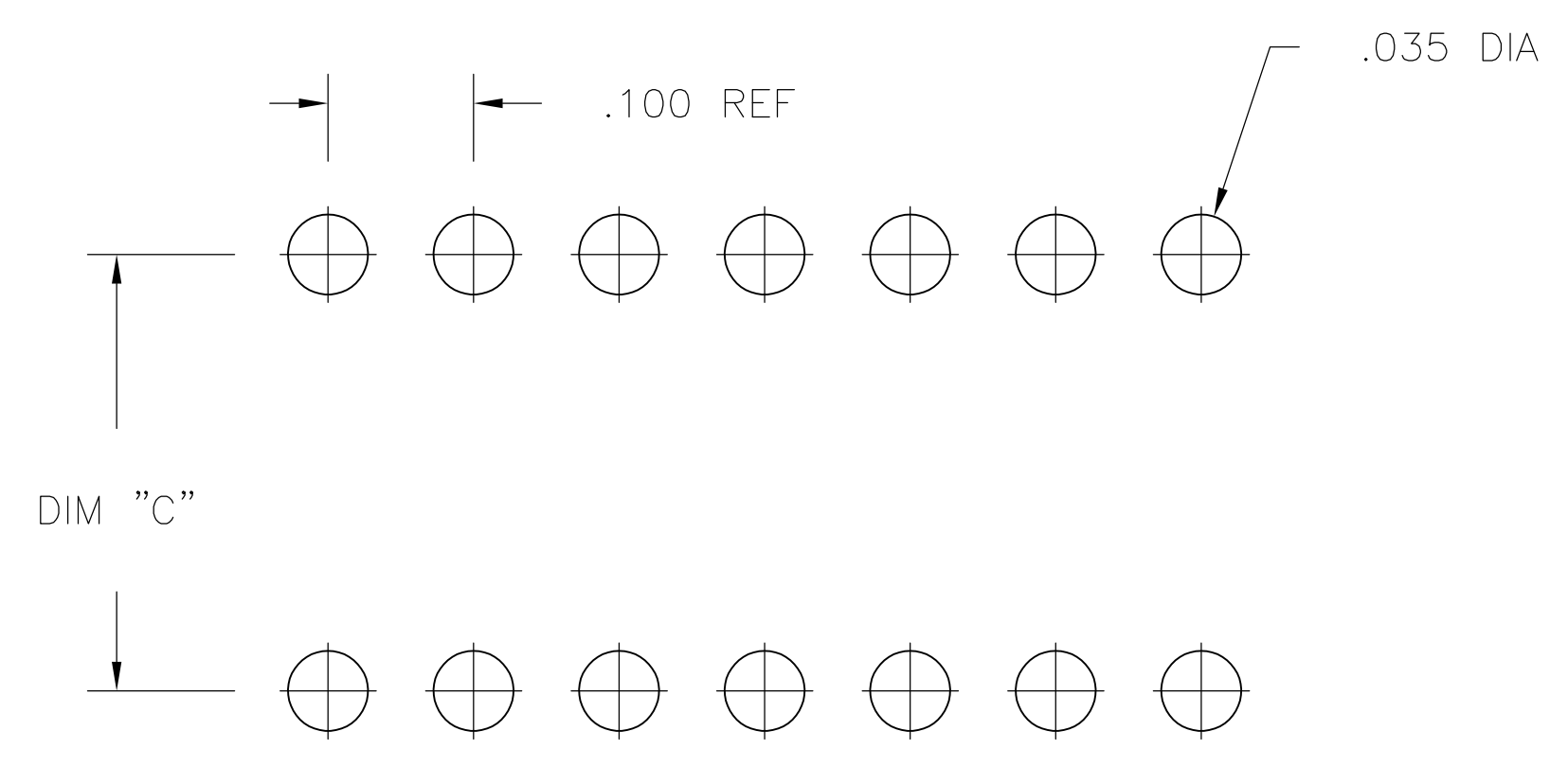
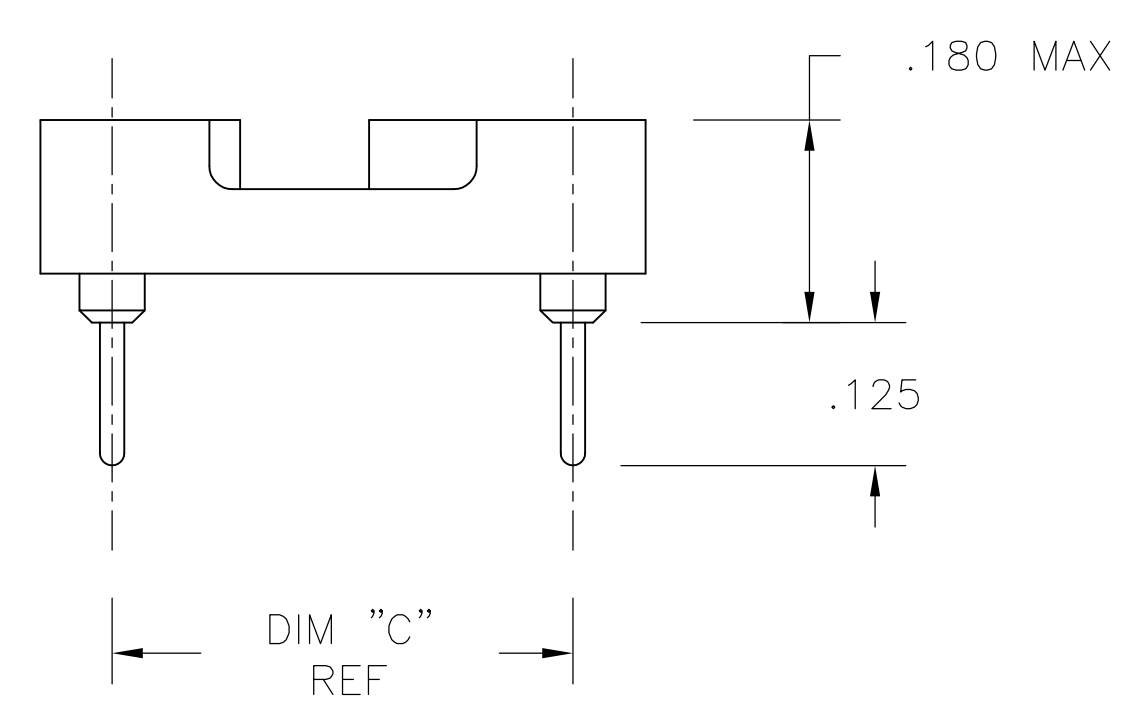
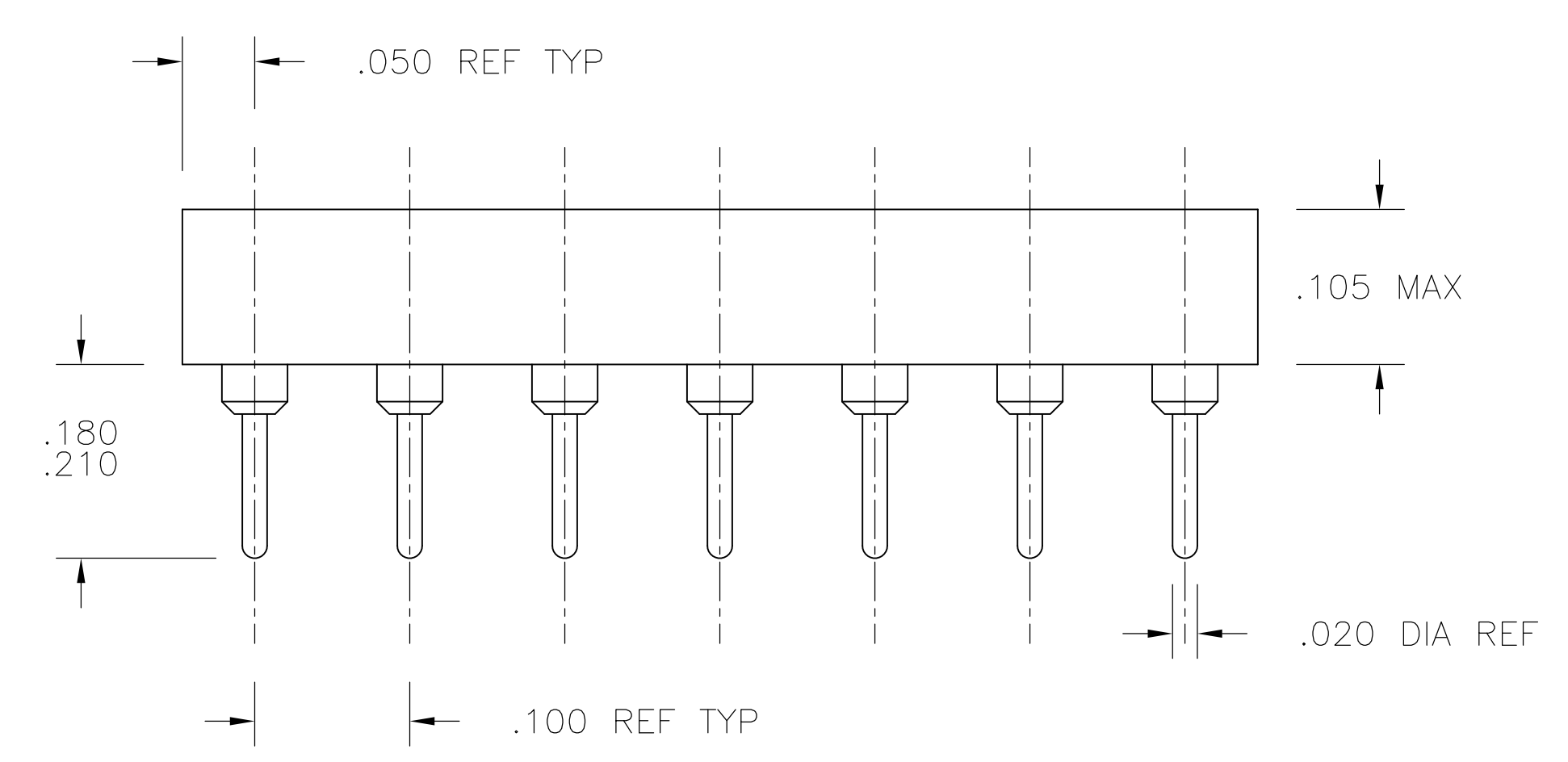


FIG. 3



1. INSULATOR MATERIAL - THERMOPLASTIC POLYESTER, PCT, BLACK, UL94 V-0
2. STAMPED CONTACT - BECU, PLATED WITH 80-200μ" TIN (LEAD FREE) OVER 75-100μ" COPPER.
3. SLEEVE - COPPER, PLATED WITH 180-340μ" THK TIN (LEAD FREE) OVER 75-125μ" MIN NICKEL.
5. STAMPED CONTACT-BECU, PLATED WITH GOLD FLASH OVER 50-100μ" NICKEL
6. STAMPED CONTACT-BECU, PLATED WITH 20μ" MIN GOLD OVER 30-100μ" NICKEL.
7. ELECTRICAL:
  - CONTACT RESISTANCE: 10 MILLIOHMS MAX
  - CONTACT RATING: 3 AMPS
  - CAPACITANCE: 1.0 pF PER MIL-STD-202, METHOD 305
  - INSULATION RESISTANCE: 5000 OHMS MIN @ 500 VDC PER MIL-STD-1344, METHOD 3003.1
  - DIELECTRIC WITHSTANDING VOLTAGE: 1000 VOLTS (RMS) PER MIL-STD-1344, METHOD 3001.1
8. MECHANICAL:
  - INSERTION FORCE: 179 GRAMS AVG
  - WITHDRAWAL FORCE: 63 GRAMS AVG
  - "ACCEPTS IC PIN - .009"X.015" THROUGH .011"X.020", OR .016" TO .021" DIAMETER, .150/.105 LONG"
9. ENVIRONMENTAL:
  - OPERATING TEMPERATURE: -55°C TO +105°C
10. OBSOLETE PARTS: OBSOLETE CIS STREAMLINING PER D.RENAUD/D.SINISI

P.C.B. HOLE LAYOUT  
TOLERANCE ±.003

THIS DRAWING IS A CONTROLLED DOCUMENT.		DIN	BSV	27JUL04	TE Connectivity	
DIMENSIONS: INCHES		TOLERANCES UNLESS OTHERWISE SPECIFIED:	0. PLC ± -	1. PLC ± -	2. PLC ± -	3. PLC ± .005
MATERIAL: SEE NOTES		FINISH: SEE NOTES	4. PLC ANGLES ± -	5. PLC ± -	6. PLC ± -	7. PLC ± -
APVD: K. WRIGHT		NAME: OPEN FRAME DIP, ECONOMY (STAMPED CONTACT) (REF AUGAT 800 SERIES)	APVD: K. WRIGHT	PRODUCT SPEC: -	APPLICATION SPEC: -	SIZE: A1
CUSTOMER DRAWING		SCALE: 4:1	WEIGHT: -	CAGE CODE: 1571552	DRAWING NO: 1571552	RESTRICTED TO: -
		SHEET: 1 OF 2	REV: E4			

△3△6△10	OBSOLETE	GOLD / TIN	.400±.005	.500	1.200	2	24	5-1571552-7
△3△6	GOLD / TIN	.300±.005	.400	1.200	2	24	5-1571552-6	
△3△6	GOLD / TIN	.900±.005	1.000	3.200	3	64	5-1571552-5	
△3△6	GOLD / TIN	.600±.005	.700	2.400	3	48	5-1571552-4	
△3△6	GOLD / TIN	.600±.005	.700	2.100	3	42	5-1571552-3	
△3△6	GOLD / TIN	.600±.005	.700	2.000	3	40	5-1571552-2	
△3△6	GOLD / TIN	.600±.005	.700	1.800	3	36	5-1571552-1	
△3△6	GOLD / TIN	.600±.005	.700	1.600	3	32	5-1571552-0	
△3△6	GOLD / TIN	.600±.005	.700	1.400	2	28	4-1571552-9	
△3△6	GOLD / TIN	.600±.005	.700	1.200	2	24	4-1571552-8	
△3△6	GOLD / TIN	.400±.005	.500	1.100	2	22	4-1571552-7	
△3△6	GOLD / TIN	.300±.005	.400	1.000	2	20	4-1571552-6	
△3△6	GOLD / TIN	.300±.005	.400	.900	2	18	4-1571552-5	
△3△6	GOLD / TIN	.300±.005	.400	.800	2	16	4-1571552-4	
△3△6	GOLD / TIN	.300±.005	.400	.400	1	8	4-1571552-3	
△3△6	GOLD / TIN	.300±.005	.400	.700	2	14	4-1571552-2	
△3△5△10	OBSOLETE	G F / TIN	.400±.005	.500	1.200	2	24	3-1571552-7
△3△5	G F / TIN	.300±.005	.400	1.200	2	24	3-1571552-6	
△3△5	G F / TIN	.900±.005	1.000	3.200	3	64	3-1571552-5	
△3△5	G F / TIN	.600±.005	.700	2.400	3	48	3-1571552-4	
△3△5	G F / TIN	.600±.005	.700	2.100	3	42	3-1571552-3	
△3△5	G F / TIN	.600±.005	.700	2.000	3	40	3-1571552-2	
△3△5	G F / TIN	.600±.005	.700	1.800	3	36	3-1571552-1	
△3△5	G F / TIN	.600±.005	.700	1.600	3	32	3-1571552-0	
△3△5	G F / TIN	.600±.005	.700	1.400	2	28	2-1571552-9	
△3△5	G F / TIN	.600±.005	.700	1.200	2	24	2-1571552-8	
△3△5	G F / TIN	.400±.005	.500	1.100	2	22	2-1571552-7	
△3△5	G F / TIN	.300±.005	.400	1.000	2	20	2-1571552-6	
△3△5	G F / TIN	.300±.005	.400	.900	2	18	2-1571552-5	
△3△5	G F / TIN	.300±.005	.400	.800	2	16	2-1571552-4	
△3△5	G F / TIN	.300±.005	.400	.700	2	14	2-1571552-3	
△3△5	G F / TIN	.300±.005	.400	.400	1	8	2-1571552-2	
△3△2	TIN / TIN	.400±.005	.500	1.200	2	24	1-1571552-7	
△3△2	TIN / TIN	.300±.005	.400	1.200	2	24	1-1571552-6	
△3△2△10	OBSOLETE	TIN / TIN	.900±.005	1.000	3.200	3	64	1-1571552-5
△3△2△10	OBSOLETE	TIN / TIN	.600±.005	.700	2.400	3	48	1-1571552-4
△3△2△10	OBSOLETE	TIN / TIN	.600±.005	.700	2.100	3	42	1-1571552-3
△3△2	TIN / TIN	.600±.005	.700	2.000	3	40	1-1571552-2	
△3△2△10	OBSOLETE	TIN / TIN	.600±.005	.700	1.800	3	36	1-1571552-1
△3△2	TIN / TIN	.600±.005	.700	1.600	3	32	1-1571552-0	
△3△2	TIN / TIN	.600±.005	.700	1.400	2	28	1571552-9	
△3△2	TIN / TIN	.600±.005	.700	1.200	2	24	1571552-8	
△3△2△10	OBSOLETE	TIN / TIN	.400±.005	.500	1.100	2	22	1571552-7
△3△2	TIN / TIN	.300±.005	.400	1.000	2	20	1571552-6	
△3△2	TIN / TIN	.300±.005	.400	.900	2	18	1571552-5	
△3△2	TIN / TIN	.300±.005	.400	.800	2	16	1571552-4	
△3△2	TIN / TIN	.300±.005	.400	.700	2	14	1571552-3	
△3△2	TIN / TIN	.300±.005	.400	.400	1	8	1571552-2	

FINISH CONTACT/ SLEEVE	"C" MAX	"B" MAX	"A" MAX	FIG	NO. OF POSN	PART NO.
---------------------------	------------	------------	------------	-----	-------------------	----------

THIS DRAWING IS A CONTROLLED DOCUMENT. DWN: BSV 27JUL04  
 DIMENSIONS: INCHES TOLERANCES UNLESS OTHERWISE SPECIFIED:  
 0. PLC ± -  
 1. PLC ± -  
 2. PLC ± -  
 3. PLC ± .005  
 4. PLC ± -  
 ANGLES ± -  
 FINISH SEE SHEET 1

APPROVED: K. WRIGHT  
 PRODUCT SPEC: -  
 APPLICATION SPEC: -  
 WEIGHT: -

NAME: OPEN FRAME DIP, ECONOMY (STAMPED CONTACT)  
 (REF AUGAT 800 SERIES)

SIZE: A1 CAGE CODE: 00779 DRAWING NO: 1571552  
 CUSTOMER DRAWING SCALE: 1:1 SHEET 2 OF 2 REV E4

TE Connectivity

## X-ON Electronics

Largest Supplier of Electrical and Electronic Components

*Click to view similar products for IC & Component Sockets category:*

*Click to view products by TE Connectivity manufacturer:*

Other Similar products are found below :

[0066-3-17-15-30-14-02-0](#) [670](#) [672](#) [673](#) [694-13-640-00-672-000](#) [712-93-120-41-001000](#) [714-93-104-31-018000](#) [8059-4G1-LF](#) [807-22-001-10-001101](#) [807-22-001-10-006101](#) [807-22-001-30-011101](#) [807-22-001-30-012101](#) [807-22-001-30-013101](#) [807-22-001-30-014101](#) [8-1437531-4](#) [8150-6P10](#) [833-93-034-10-001000](#) [851-41-006-10-001000](#) [851-43-008-20-001000](#) [851-43-014-20-001000](#) [851-93-006-20-001000](#) [851-93-010-20-001000](#) [853-43-020-10-001000](#) [86.010.0053.0](#) [116-43-308-41-007000](#) [PX-68LCC](#) [121-13-318-41-001000](#) [121-13-320-41-001000](#) [121-13-308-41-001000](#) [123-43-314-41-801000](#) [123-43-420-41-001000](#) [122-13-316-41-001000](#) [123-13-624-41-001000](#) [123-43-306-41-001000](#) [12-3513-11](#) [123-91-320-41-001000](#) [126-43-310-41-002000](#) [AKSUN 37V-T](#) [1437503-9](#) [1437504-1](#) [146-44-308-41-013000](#) [146-43-308-41-012000](#) [160-10-308-00-001000](#) [160-40-320-00-001000](#) [214-99-306-01-670800](#) [232-1270-02-0602](#) [2-382761-4](#) [2-5331677-4](#) [2-640360-3](#) [2801-2-00-50-00-00-07-0](#)