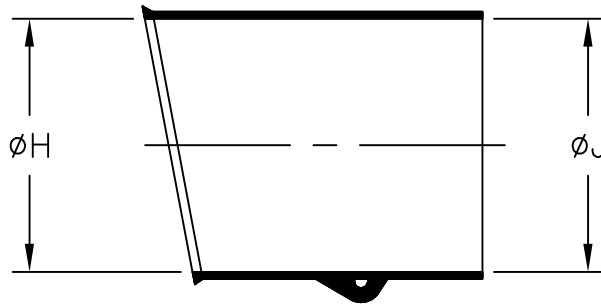


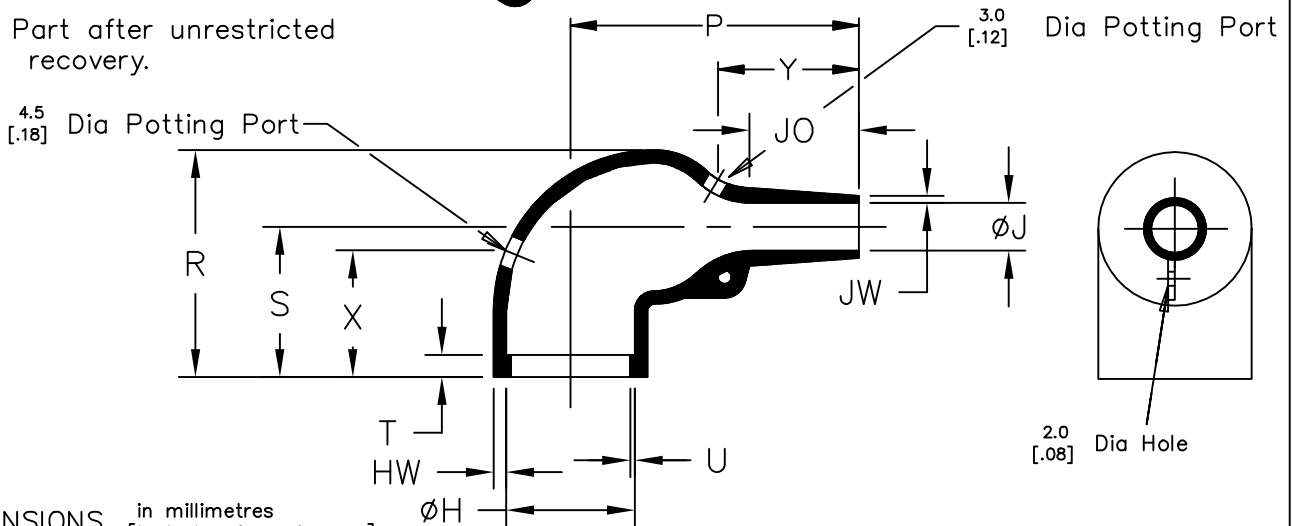
REVISIONS

| P | LTR | DESCRIPTION | DATE | DWN | APVD |
|---|-----|------------------|-----------|-----|------|
| | 13 | PRODUCTION ISSUE | 31JAN2019 | PNT | MT |

a) Part as supplied.



b) Part after unrestricted recovery.



DIMENSIONS in millimetres
[in inches, for reference]

| Part No. | H | | J | | P | R | S | T | U | JO | HW | JW | X | Y |
|----------|--------------|----------------|--------------|---------------|---------------|--------------|--------------|--------------|--------------|----------------|--------------|--------------|--------------|--------------|
| | Min a | Max b | Min a | Max b | ±10% b | ±10% b | ±10% b | ±10% b | ±10% b | ±10% b | ±20% b | ±20% b | ±20% b | ±20% b |
| 222K121 | 24 [.94] | 10.4 [.41] | 24 [.94] | 5.6 [.22] | 25 [.98] | 25 [.98] | 19 [.75] | 3.0 [.12] | 1.0 [.04] | 8.5 [.33] | 1.3 [.05] | 0.5 [.02] | 18 [.71] | 16 [.63] |
| 222K132 | 30 [1.18] | 14.2 [.56] | 30 [1.18] | 5.9 [.23] | 32 [1.26] | 27 [1.06] | 20 [.79] | 3.0 [.12] | 1.0 [.04] | 8.5 [.33] | 1.5 [.06] | 0.8 [.03] | 18 [.71] | 20 [.79] |
| 222K142 | 31 [1.22] | 18.0 [.71] | 31 [1.22] | 7.1 [.28] | 39 [1.54] | 31 [1.22] | 21 [.83] | 3.0 [.12] | 1.0 [.04] | 15.0 [.59] | 1.8 [.07] | 1.0 [.04] | 18 [.71] | 20 [.79] |
| 222K152 | 36 [1.42] | 22.4 [.88] | 36 [1.42] | 8.4 [.33] | 46 [1.81] | 38 [1.50] | 26 [1.02] | 3.0 [.12] | 1.0 [.04] | 16.0 [.63] | 1.8 [.07] | 1.0 [.04] | 25 [.98] | 25 [.98] |
| 222K163 | 43 [1.69] | 28.2 [1.11] | 43 [1.69] | 9.9 [.39] | 55 [2.17] | 45 [1.77] | 30 [1.18] | 3.0 [.12] | 1.7 [.07] | 17.5 [.69] | 2.0 [.08] | 1.0 [.04] | 25 [.98] | 30 [1.18] |
| 222K174 | 60 [2.36] | 35.1 [1.38] | 60 [2.36] | 15.7 [.62] | 80 [3.15] | 54 [2.13] | 35 [1.38] | 3.0 [.12] | 1.7 [.07] | 32.0 [1.26] | 3.3 [.13] | 1.5 [.06] | 25 [.98] | 45 [1.77] |
| 222K185 | 66 [2.60] | 44.5 [1.75] | 66 [2.60] | 16.8 [.66] | 108 [4.25] | 68 [2.68] | 42 [1.65] | 3.0 [.12] | 2.0 [.08] | 48.0 [1.89] | 3.8 [.15] | 2.0 [.08] | 35 [1.38] | 70 [2.76] |

THIS DRAWING IS UNPUBLISHED. ALL RIGHTS RESERVED. © COPYRIGHT - TE Connectivity Ltd.

| | | | | | | | | |
|--|------------------|------------------|-----------|----------------------|-----------------|-----------|---------------|--------|
| DIMENSIONS: mm [INCHES] | DWN | PRAVEEN N T | 31JAN2019 | MATERIAL | SEE SHEET 2 | FINISH | - | |
| | CHK | N NAGAR | 31JAN2019 | TE Connectivity Ltd. | | | | |
| TOLERANCES UNLESS OTHERWISE SPECIFIED: | APVD | M TAYLOR | 31JAN2019 | | | | | |
| 0 PLC ± - | PRODUCT SPEC | - | | | | | | NAME |
| 1 PLC ± - | APPLICATION SPEC | - | | SIZE | A4 | CAGE CODE | 00779 | |
| 2 PLC ± - | WEIGHT | - | | DRAWING NO | C= 222K1XX-XX-0 | | RESTRICTED TO | - |
| 3 PLC ± - | | CUSTOMER DRAWING | | | SCALE | DNS | SHEET | 1 OF 2 |
| 4 PLC ± - | | | | | REV | 13 | | |

REVISIONS

| P | LTR | DESCRIPTION | DATE | DWN | APVD |
|---|-----|-------------|------|-----|------|
| - | - | SEE SHEET 1 | - | - | - |

COMPATIBILITY CHART

| Material Dash Number | Material Description | RT Spec | Coating Slash No. | Coating S No. |
|----------------------|----------------------------|---------|-------------------|---------------------|
| -3 | POLYOLEFIN, SEMI-RIGID | RT-301 | /42, /86, /180 | S1017; S1048; S1030 |
| -4 | POLYOLEFIN, FLEXIBLE | RT-1304 | /42, /86, /180 | S1017; S1048; S1030 |
| -25 | ELASTOMER, FLUID RESISTANT | RW-2070 | /42, /86, /225 | S1017; S1048; S1206 |
| | | | | |

Ordering Information

222K1XX-XX/XX-0

- Color designator
- Adhesive Slash Number (if required see compatibility chart)
- Material Dash Number (see compatibility chart)
- Base Part Number

NOTES

- 1) If eyelet clip (000W212) is required with part then add CS-1858 to description (i.e. 222K132-3-CS-1858-0).
- 2) As supplied dimensions are for uncoated parts, when coating is added entry diameters will reduce by 1.5mm[.06] Max.
- 3) Potting ports are optional, when specified by suffix :- -00 they will be located as shown.
- 4) For -12 SCD see 222K1XX-12.
- 5) For -100 SCD see 222K1XX-100

THIS DRAWING IS UNPUBLISHED. ALL RIGHTS RESERVED. © COPYRIGHT - TE Connectivity Ltd.

| | | | | | |
|---|---------------------------|------------------------------|--------------------|----------------------------|--------------------|
| DIMENSIONS: mm [INCHES] | DWN PRAVEEN N T 31JAN2019 | MATERIAL | - | FINISH | - |
| | CHK N NAGAR 31JAN2019 | TE Connectivity Ltd. | | | |
| TOLERANCES UNLESS OTHERWISE SPECIFIED: 0 PLC ± - 1 PLC ± - 2 PLC ± - 3 PLC ± - 4 PLC ± - ANGLES ± - | APVD M TAYLOR 31JAN2019 | | | | |
| PRODUCT SPEC - | | NAME BOOT 90 DEG WITH LIP | | | |
| APPLICATION SPEC - | | SIZE A4 | CAGE CODE 00779 | DRAWING NO 222K1XX-XX-0 | RESTRICTED TO - |
| WEIGHT | | CUSTOMER DRAWING | | | |
| | | | SCALE DNS | SHEET 2 OF 2 | REV 13 |

X-ON Electronics

Largest Supplier of Electrical and Electronic Components

Click to view similar products for [Heat Shrink Cable Boots & End Caps](#) category:

Click to view products by [TE Connectivity](#) manufacturer:

Other Similar products are found below :

[577159N001](#) [645494-000](#) [CX4132-000](#) [687025-000](#) [705331-000](#) [718446-000](#) [725666N001](#) [729257-000](#) [F27131-000](#) [F85868-000](#) [770-003S106W2](#) [770-013210W1](#) [770-013311](#) [770-013312](#) [806542N001](#) [807507-000](#) [808362-000](#) [808618-000](#) [809125-000](#) [809130-000](#) [809218-000](#) [812014-000](#) [812047-000](#) [813166-000](#) [813767N002](#) [814741-000](#) [819117N001](#) [823026-000](#) [823070-000](#) [841189N001](#) [861471-000](#) [866647-000](#) [879515-000](#) [937577-000](#) [957073-000](#) [982033-2](#) [A77813-000](#) [R280576000](#) [D96192-000](#) [163549-000](#) [EN3BOOTLKIT](#) [MTPSRBCL-C](#) [1954015-1](#) [200W531-3-0](#) [202A163-4-0-CS5067](#) [202A343-3-00-0](#) [202B221-13-0](#) [202B231-13-0](#) [202B563-25-07-0](#) [202C241-13-0](#)