

**NOTES**

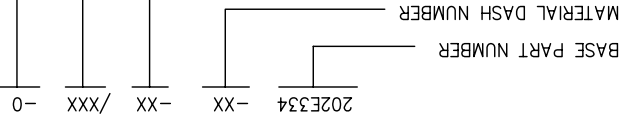
1. ALL DIMENSIONS ARE IN INCHES [MILLIMETERS]

2. DIMENSIONS APPEARING IN TABLE ARE AS FOLLOWS:  
 a - AS SUPPLIED  
 b - AFTER UNRESTRICTED RECOVERY

COATING (ADHESIVE): IS OPTIONAL  
 AS SUPPLIED DIMENSIONS APPEARING IN TABLE ARE FOR UNCOATED PARTS.

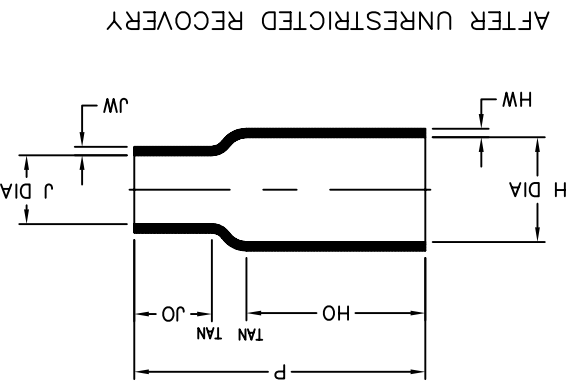
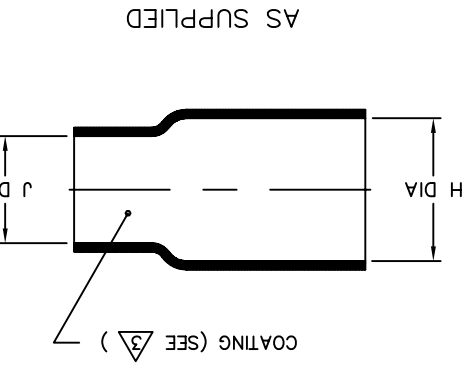
DIAMETER WILL BE REDUCED BY .06 MAX. WHEN COATING IS ADDED, ENTRY

4. ORDERING INFORMATION:



**COMPATIBILITY CHART**

MATERIAL DASH NO.	ADHESIVE (COATING) SLASH NO.	ADHESIVE (COATING) S NO.
-50	N/A	N/A
-51	/86; /164; /180	S-1048; S-1124; S-1030
-71	/42; /86; /180	S-1017; S-1048; S-1030
-770	N/A	N/A
-780	N/A	N/A



**TABLE OF DIMENSIONS**

PART DESCRIPTION	H		J		P	HO	JO	HW	JW
	MIN	MAX	MIN	MAX					
202E334	.50	.42	.11	.28	1.62	±10%	±10%	.62	.06
202E336	.82	.42	.81	.21	2.50	±10%	±10%	1.62	.06
202E344	.87	.74	.44	.11	2.10	±10%	±10%	1.10	.06
202E346	.87	.74	.81	.21	2.10	±10%	±10%	1.10	.06

**CUSTOMER DRAWING**

UNLESS OTHERWISE SPECIFIED DIMENSIONS ARE IN INCHES. METRIC DIMENSIONS ARE IN BRACKETS.

DEGMAL TOLERANCES  
 .XXX ± .005  
 .XX ± .01  
 .X ± .01  
 .X ± .01  
 .X ± .01  
 .X ± .01

ANGLE TOLERANCE  
 ° ± 1 DEG.  
 ° ± .01  
 ° ± .01  
 ° ± .01

TYCO ELECTRONICS RESERVES THE RIGHT TO PRODUCT FOR THEIR APPLICATION. THIS DRAWING AT THE DISCRETION OF THE USER SHOULD EVALUATE THE SUITABILITY OF THE PRODUCT FOR THEIR APPLICATION.

THIRD ANGLE PROJECTION

APPROVED  
 YUNGUYEN

DRAWN  
 YUNGUYEN

ROYCHEM MOLDED PARTS  
 305 CONSTITUTION DR  
 MENLO PARK, CA 94025

**Tyco Electronics**

SIZE B  
 CODE IDENT. NO. 06090  
 DWG. NO. 202E334trru346

DO NOT SCALE THIS DRAWING.  
 SHEET 1 OF 1

## X-ON Electronics

Largest Supplier of Electrical and Electronic Components

*Click to view similar products for [Heat Shrink Cable Boots & End Caps](#) category:*

*Click to view products by [TE Connectivity](#) manufacturer:*

Other Similar products are found below :

[577159N001](#) [007758-000](#) [610368N003](#) [645494-000](#) [M85049/141-02HU](#) [M85049/141-03HU](#) [M85049/141-04HU](#) [687025-000](#) [705331-000](#)  
[718446-000](#) [725666N001](#) [729257-000](#) [F21914-000](#) [F27131-000](#) [F85868-000](#) [770-006A103R](#) [770-006A304W1](#) [770-006A305W1](#) [770-](#)  
[006A308W1](#) [770-011T303W1](#) [770-011T304W1](#) [770-020S702W1](#) [770-020S704W1](#) [806138-000](#) [806542N001](#) [807507-000](#) [808059-000](#)  
[808296-000](#) [808362-000](#) [808828-000](#) [809125-000](#) [809130-000](#) [809218-000](#) [811218-000](#) [811288-000](#) [812014-000](#) [812047-000](#) [813166-000](#)  
[813767N002](#) [814417-000](#) [819115N001](#) [819117N001](#) [823026-000](#) [823070-000](#) [825002-000](#) [841189N001](#) [861471-000](#) [866647-000](#) [937577-](#)  
[000](#) [950764-000](#)