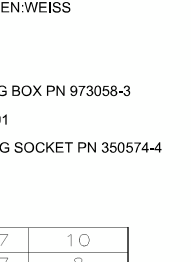
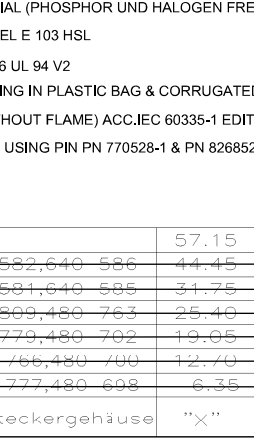
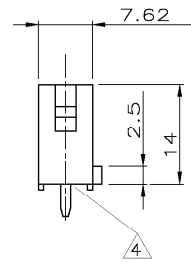
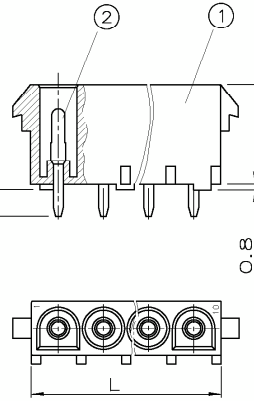
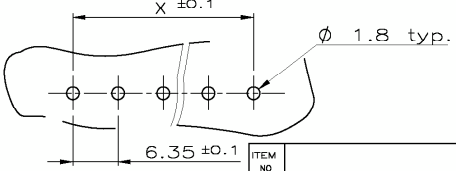
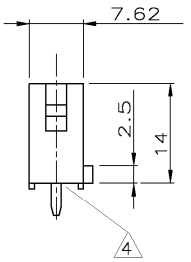
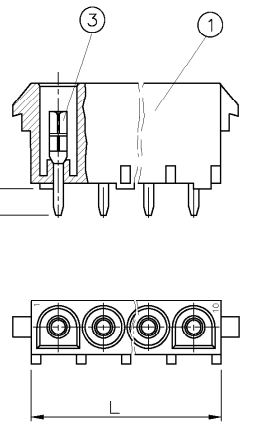


Leiterplatten-LAYOUT

Bestellbeispiel:

2-826839-3 besteht aus:
 -2-pol. UMNL PC HEADER HSG. (NATURAL)
 -UMNL Stiftkontakt (selectiv vergoldet)

- 3 Nur erste und letzte Kontaktkammer bezeichnet
- 4 Kontaktausdrückkraft größer 20N pro Kontakt



- △ NEUES MATERIAL (PHOSPHOR UND HALOGEN FREI) AUSSEHEN:WEISS
- △ MATERIAL ZYTEL E 103 HSL
- △ MATERIAL PA 6 UL 94 V2
- ⊗ BULK PACKAGING IN PLASTIC BAG & CORRUGATED SHIPPING BOX PN 973058-3
- △ GWT 750° (WITHOUT FLAME) ACC.IEC 60335-1 EDITION 06/2001
- △ PN 826845-3 IS USING PIN PN 770528-1 & PN 826852-3 IS USING SOCKET PN 350574-4

-4 SUPERSEDED BY -3

-4 SUPERSEDED BY -3

-4 SUPERSEDED BY -3

-4 SUPERSEDED BY -3

-4 SUPERSEDED BY -3

-4 SUPERSEDED BY -3

-4 SUPERSEDED BY -3

-4 SUPERSEDED BY -3

-4 SUPERSEDED BY -3

-4 SUPERSEDED BY -3

-4 SUPERSEDED BY -3

ITEM NO.	CONTACT		TYP	UMNL PIN		UMNL SOCKET	
				MAT	CuSn nachverzinkt über Ni select Gold	CuSn nachverzinkt über Ni select Gold	
HOUSING	TYP	PN	COLOR	DWG SIZE	PN	PN	PN
2 WAY UMNL PC.HEADER	2	926310	-1 Natural -2 Black -3 Natural -4 White -5 Orange -6 Black -7 Natural	D	1	1	1
					2	2	2
					3	3	3
					4	4	4
					5	5	5
					6	6	6
					7	7	7
3 WAY UMNL PC.HEADER	3	926311	-1 Natural -2 Black -3 Natural -4 White -5 Orange -6 Black -7 Natural	D	1	1	1
					2	2	2
					3	3	3
					4	4	4
					5	5	5
					6	6	6
					7	7	7
4 WAY UMNL PC.HEADER	4	926312	-1 Natural -2 Black -3 Natural -4 White -5 Orange -6 Black -7 Natural	D	1	1	1
					2	2	2
					3	3	3
					4	4	4
					5	5	5
					6	6	6
					7	7	7
5 WAY UMNL PC.HEADER	5	926313	-1 Natural -2 Black -3 Natural -4 White -5 Orange -6 Black -7 Natural	D	1	1	1
					2	2	2
					3	3	3
					4	4	4
					5	5	5
					6	6	6
					7	7	7
6 WAY UMNL PC.HEADER	6	926314	-1 Natural -2 Black -3 Natural -4 White -5 Orange -6 Black -7 Natural	D	1	1	1
					2	2	2
					3	3	3
					4	4	4
					5	5	5
					6	6	6
					7	7	7
8 WAY UMNL PC.HEADER	8	926315	-1 Natural -2 Black -3 Natural -4 White -5 Orange -6 Black -7 Natural	D	1	1	1
					2	2	2
					3	3	3
					4	4	4
					5	5	5
					6	6	6
					7	7	7
10 WAY UMNL PC.HEADER	10	926316	-1 Natural -2 Black -3 Natural -4 White -5 Orange -6 Black -7 Natural	D	1	1	1
					2	2	2
					3	3	3
					4	4	4
					5	5	5
					6	6	6
					7	7	7

926 302	57.15	64.77	10
926 301,640 582,640 586	44.45	52.07	8
936 300,640 581,640 585	31.75	39.37	6
926 299,350 809,480 763	25.40	33.02	5
926 298,350 779,480 702	19.05	26.67	4
350 766,480 700	12.70	20.32	3
350 777,480 698	6.35	13.97	2
Passend zu Steckergehäuse	"X"	"L"	Polzahl

ZEICHNUNG GÜLTIG AB 01./96.				
STE TE Connectivity				
BENENNUNG UMNL IN-LINE PC.HEADER ASSY				
K				
BESTELL-NR.	POS.	STÜCK	BENENNUNG EINZELTEIL	WERKSTOFF
OBERFLÄCHE		NICHT TOLERIERTE MASSE		
FARBE		FORMAT		
-		A2		
-		ZEICHNUNGS-NR.		
-		C-826839		
MAGSTAB		BLATT		
2:1(5:1)		1 VON 1		
-		REV.		
-		N		

X-ON Electronics

Largest Supplier of Electrical and Electronic Components

Click to view similar products for Pin & Socket Connectors category:

Click to view products by TE Connectivity manufacturer:

Other Similar products are found below :

- [6450822-1](#) [770392-1](#) [794042-1](#) [796885-1](#) [8-794535-1](#) [PLR3455ACS-222](#) [R929991004](#) [R929993003](#) [1403611-1](#) [1-480349-5](#) [152302-5](#)
- [153211-2](#) [1586092-1](#) [1586129-1](#) [1586681-4](#) [1586700-1](#) [1586368-1](#) [1586380-1](#) [1586616-1](#) [1586680-5](#) [16-06-0038](#) [164164-5](#) [1-6609930-1](#)
- [172296-1](#) [19-09-2035](#) [200503-1](#) [200788-2](#) [2029090-4](#) [2029095-4](#) [925061-7](#) [293734-4](#) [293737-2](#) [1-765362-4](#) [1871534-1](#) [200833-4](#)
- [2008625-2](#) [2029027-2](#) [2029096-4](#) [R929991000](#) [R929991002](#) [R929993000](#) [319-10-101-00-005000](#) [319-10-102-00-001000](#) [319-10-104-00-001000](#) [319-10-105-00-001000](#) [319-10-108-00-001000](#) [319-10-112-00-006000](#) [39-01-8019](#) [319-10-101-00-001000](#) [319-10-102-00-005000](#)