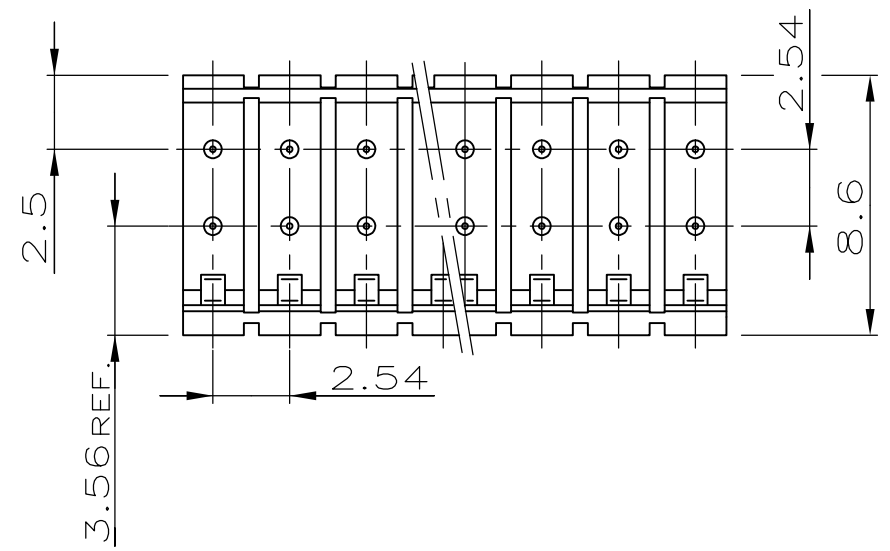
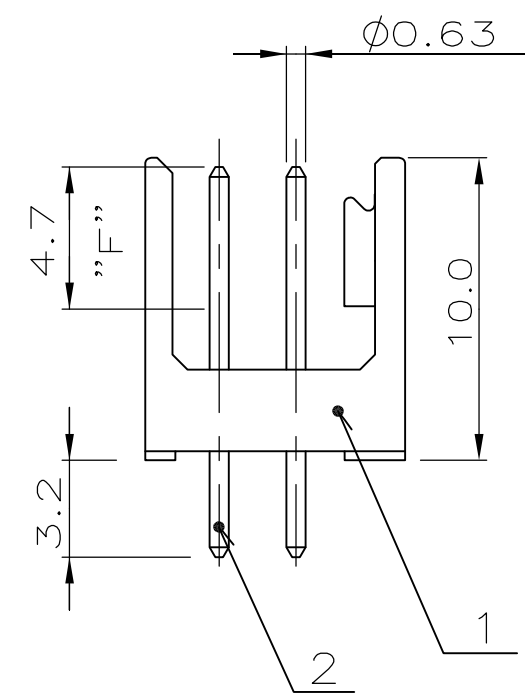
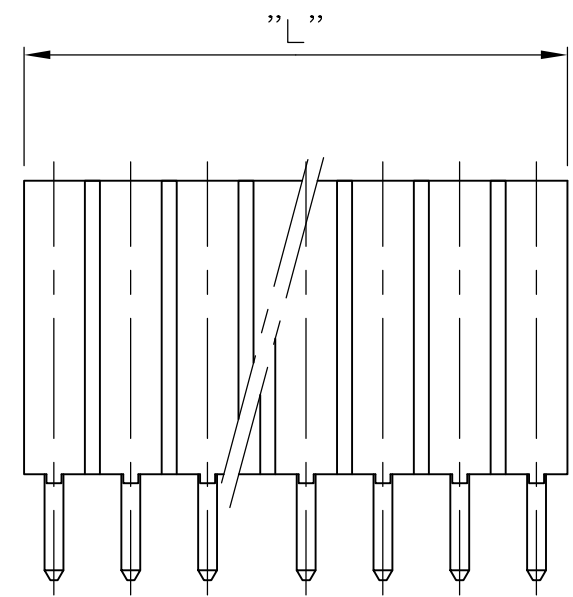


THIS DRAWING IS UNPUBLISHED. RELEASED FOR PUBLICATION
 © COPYRIGHT - By - ALL RIGHTS RESERVED.

LOC	DIST	REVISIONS					
		P	LTR	DESCRIPTION	DATE	DWN	APVD
-	-	F		PLATING CHANGE TO PdNi + Au FLASH AT AREA F	19MAY2014	KJK	JK

POS. PER ROW "n"	L±0.4	PART NO.
2	4.58	829 538 -2
3	7.12	829 538 -3
4	9.66	829 538 -4
5	12.20	829 538 -5
6	14.74	829 538 -6
7	17.28	829 538 -7
8	19.82	829 538 -8
15	37.60	1- 829 538 -5



NOTES:

- 1 MATING SIDE AT AREA "F"
 MIN. 0.7µm PdNi + 0.1µm GOLD FLASH
 OVER 1.27µm NICKEL
- SOLDER SIDE: MIN. 3.0µm TIN OVER 1.27µm NICKEL

2	CONTACT PIN KONTAKTSTIFT	CuZn	1
1	PIN HOUSING STIFTGEHÄUSE	PA 4/6	BLACK SCHWARZ
POS.	BENENNUNG EINZELTEIL	WERKSTOFF	OBERFLÄCHE
[ITEM NO.]	[DESCRIPTION]	[MATERIAL]	FARBE
			[FINISH]

THIS DRAWING IS A CONTROLLED DOCUMENT.

DIMENSIONS:	TOLERANCES UNLESS OTHERWISE SPECIFIED:
mm	±0.2mm
	0 PLC ± -
	1 PLC ± -
	2 PLC ± -
	3 PLC ± -
	4 PLC ± -
	ANGLES ± -
MATERIAL	FINISH
SEE TABLE	SEE TABLE

DWN	MULLER	09.02.90	STE TE Connectivity
CHK	SCHAARSCHMIDT	12.02.90	
APVD	-	-	NAME
PRODUCT SPEC	AMPMODU II PIN HEADER, DUAL ROW		
APPLICATION SPEC	108-18012		
WEIGHT	-	-	RESTRICTED TO
CUSTOMER DRAWING		SCALE	4:1
SIZE	A3	CAGE CODE	00779
DRAWING NO	C-829538		SHEET
1 OF 1		REV	F

X-ON Electronics

Largest Supplier of Electrical and Electronic Components

Click to view similar products for [Headers & Wire Housings](#) category:

Click to view products by [TE Connectivity](#) manufacturer:

Other Similar products are found below :

[95000-104TRLF](#) [10135584-644402LF](#) [DF62W-EP2022PCA](#) [95000-106TRLF](#) [DF62W-2022SCA](#) [DF62W-EP2022PC](#) [2203348](#) [DF62W-2022SC](#) [1084018](#) [1029039](#) [1084017](#) [802-10-012-10-002000](#) [1112640](#) [1112639](#) [891-007-9SS-BST1T](#) [000-34000](#) [0008550134](#) [0009482033](#) [0009507031](#) [57102-F02-18ULF](#) [57102-S06-03LF](#) [57202-S52-04LF](#) [PCN6-15S-2.5E](#) [0039019024](#) [58102-G61-06LF](#) [582553-1](#) [0009485154](#) [0009508121](#) [009176003701906](#) [0022285053](#) [0050291907](#) [018731A](#) [LY20-4P-DT1-P1E-BR](#) [02.125.8002.8](#) [60101931](#) [60598-1 \(Cut Strip\)](#) [M1625-3R/100](#) [61062-3](#) [61082-181009](#) [CSU011177004](#) [636-1427](#) [638009-1](#) [641938-9](#) [641991-4](#) [644168-1](#) [644827-2](#) [647662-1](#) [65039-019ELF](#) [65692-001LF](#) [65781-018](#)