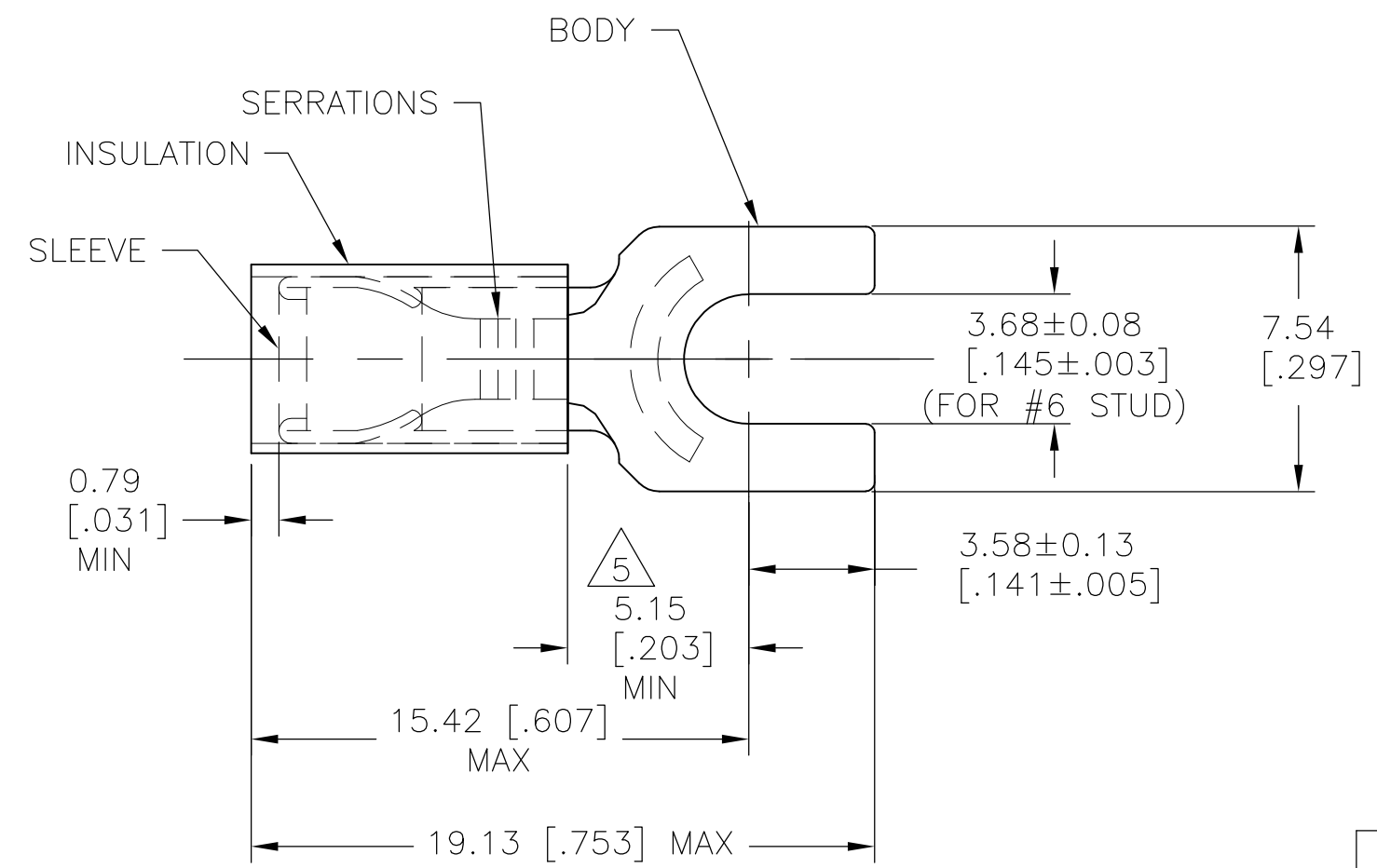


THIS DRAWING IS UNPUBLISHED. RELEASED FOR PUBLICATION  
 © COPYRIGHT - By - ALL RIGHTS RESERVED.

| LOC | DIST | REVISIONS |     |                           |         |     |      |
|-----|------|-----------|-----|---------------------------|---------|-----|------|
|     |      | P         | LTR | DESCRIPTION               | DATE    | DWN | APVD |
| G   | 14   |           | J2  | REVISED PER ECO-11-004917 | 11MAR11 | RK  | HMR  |

- 1 WIRE INSULATION DIA = 2.92 [.115] - 4.32 [.170]
- 2 TONGUE MATERIAL THK = 0.79±0.05 [.031±.002]
- 3 0.00254 [.000100] MIN THK. TIN PLATE (ASTM-B545)
- 4 MATERIAL:  
INSULATION: NYLON - BLUE  
BODY & SLEEVE: COPPER (ASTM-B152)
- 5 APPLIES FROM THE METAL EDGE OF BARREL TO THE CENTERLINE OF STUD



| OBSOLETE | QTY  | DESCRIPTION        | PART NO   |
|----------|------|--------------------|-----------|
|          | 50   | LOOSE PC, BAG      | 8-35559-5 |
|          | 100  | LOOSE PC, BOX      | 8-35559-1 |
| OBSOLETE | 100  | ON TAPE, SMALL BOX | 2-35559-3 |
| OBSOLETE | 1000 | ON TAPE, LARGE BOX | 2-35559-2 |
|          | 5000 | ON TAPE, REEL      | 2-35559-1 |
|          | -    | LOOSE PIECE        | 35559     |

|  |  |   |  |  |  |                 |        |               |
|--|--|---|--|--|--|-----------------|--------|---------------|
| CUSTOMER SERVICE SYSTEMS   |  | MAX RECOMMENDED OPERATING TEMPERATURE:<br>105°C [221° F]  | THIS DRAWING IS A CONTROLLED DOCUMENT. |  | DWN RAGHAVENDRA 03JUN09                    | TE Connectivity |        |               |
| FOR ADDITIONAL PRODUCT INFORMATION OR COPIES OF DRAWINGS AND TECHNICAL DOCUMENTS | PRODUCT INFORMATION CENTER<br>1-800-522-6752 | VOLTAGE RATING:<br>300V MAX   | DIMENSIONS:<br>mm [INCHES]             | TOLERANCES UNLESS OTHERWISE SPECIFIED:   | CHK JEFF RUTH 03JUN09                      |                 |        |               |
| FOR APPLICATION TOOLING INFORMATION  | TOOLING ASSISTANCE CENTER<br>1-800-722-1111  | CIRCULAR MIL AREA:<br>1.04-2.62mm² [2,050-5,180] SOLID OR STRANDED  |  | 0 PLC ± -<br>1 PLC ± -<br>2 PLC ± -<br>3 PLC ± 0.20 [.008]<br>4 PLC ± -<br>ANGLES ± 0° 30' | APVD TOM MICHIELUTTI 03JUN09               | PRODUCT SPEC    |        |               |
| FOR ORDER ENTRY  | 1-800-526-5142                               | THIS DRAWING IS A CONTROLLED DOCUMENT FOR AMP INCORPORATED. IT IS SUBJECT TO CHANGE AND THE CONTROLLING ENGINEERING ORGANIZATION SHOULD BE CONTACTED FOR THE LATEST REVISION. | MATERIAL                               | FINISH   | APPLICATION SPEC                           |                 |        | RESTRICTED TO |
|  |  |   |  | BODY   | SIZE A3 CAGE CODE 00779 DRAWING NO C-35559 |                 |        |               |
|  |  |   |  | CUSTOMER DRAWING   | SCALE 5:1                                  | SHEET 1 OF 1    | REV J2 |               |

## X-ON Electronics

Largest Supplier of Electrical and Electronic Components

*Click to view similar products for [Terminals](#) category:*

*Click to view products by [TE Connectivity](#) manufacturer:*

Other Similar products are found below :

[00-054007-01074-6](#) [00-054007-70206-1](#) [00-054007-70210-8](#) [00-054007-70217-7](#) [00-054007-70226-9](#) [00-054007-70228-3](#) [00-054007-70248-1](#) [00-054007-70256-6](#) [00-054007-70301-3](#) [00-054007-70316-7](#) [00-054007-49560-4](#) [00-054007-70209-2](#) [00-054007-70225-2](#) [00-054007-70227-6](#) [00-054007-70231-3](#) [00-054007-70241-2](#) [00-054007-70242-9](#) [00-054007-70244-3](#) [00-054007-70246-7](#) [00-054007-70263-4](#) [00-054007-70288-7](#) [00-054007-70290-0](#) [00-054007-70300-6](#) [00-054007-70304-4](#) [01-2065-1-0216](#) [01-2900-1-04412](#) [00581P0075](#) [600TS-10](#) [60205-1](#) [604200-1](#) [605601-1](#) [60598-1-CUT-TAPE](#) [61314-6-C](#) [61810-3](#) [61-S](#) [61-SN](#) [626-0194](#) [62-NBM-A](#) [62-SN](#) [62-SP](#) [63-S](#) [640179-1](#) [M55155/059I03](#) [M55155/079C01](#) [M55155/099H02](#) [M55155/109H01](#) [M55155/109H02](#) [M55155/12XH05](#) [M55155/16XH02](#) [M55155/29-5S](#)