

THIS DRAWING IS UNPUBLISHED.

RELEASED FOR PUBLICATION

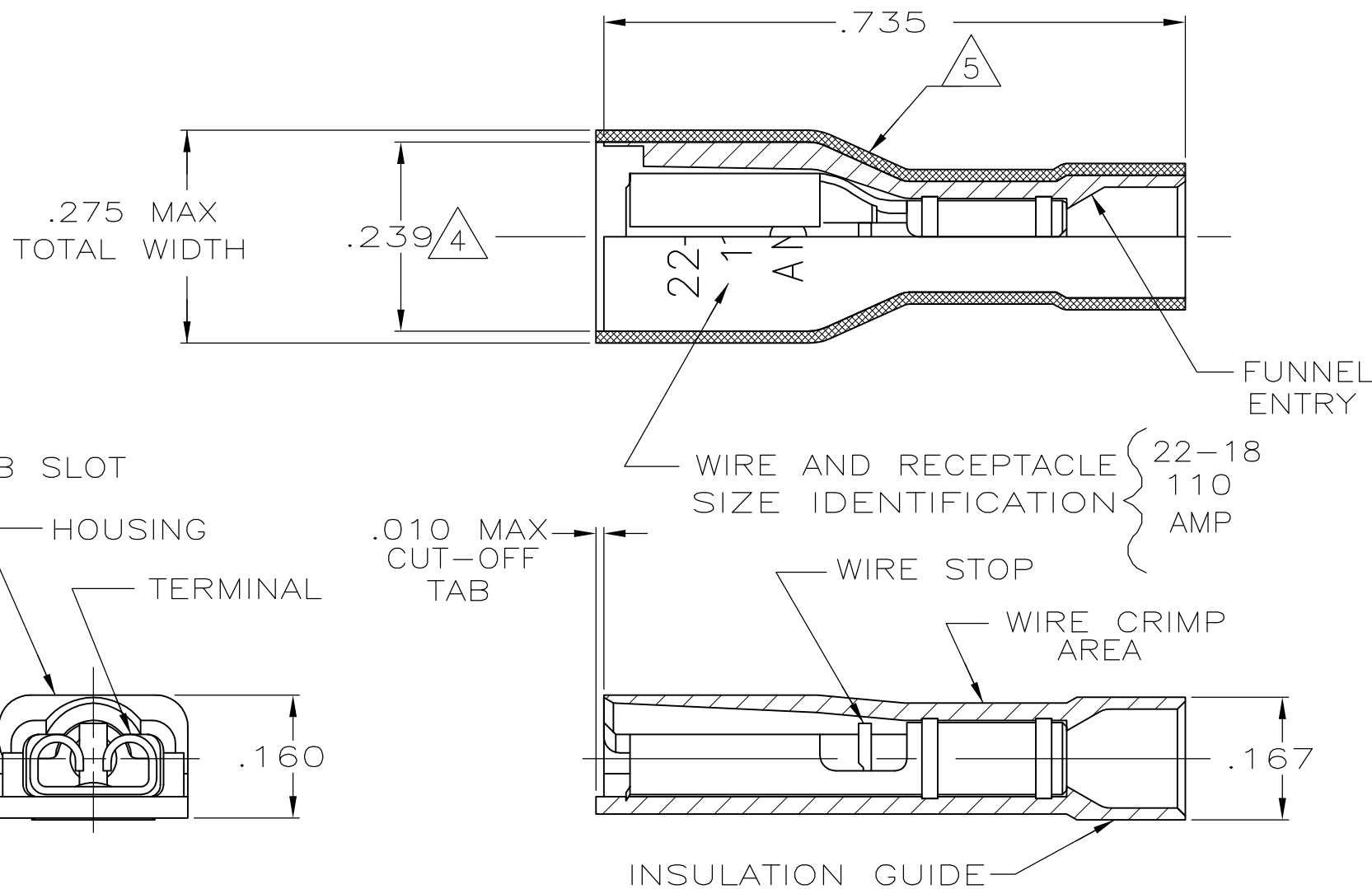
ALL RIGHTS RESERVED.

© COPYRIGHT - By -

LOC AF DIST 50

REVISIONS

| P | LTR | DESCRIPTION               | DATE    | DWN | APVD |
|---|-----|---------------------------|---------|-----|------|
| P |     | REVISED PER ECR-13-004343 | 30JUL13 | KH  | KR   |



- 1 MATES WITH .020±.001X.110 OR .125 TAB
- 2 WIRE STRIP LENGTH .281
- 3 INSULATION SIZE .120 MAX DIA
- 4 DIMENSION DOES NOT INCLUDE TRIM BURR
- 5 .015 MAX CARRIER TRIM BURR PER SIDE IS ALLOWABLE IN THE SHADED AREA

|                                       |            |
|---------------------------------------|------------|
| HOUSING: NYLON, COLOR-RED TRANSLUCENT | 2-520084-2 |
| RECEPTACLE: BRASS<br>TIN              |            |
| MATERIAL & FINISH                     | PART NO    |

|  |                  |                          |   |              |       |
|--|------------------|--------------------------|---|--------------|-------|
| THIS DRAWING IS A CONTROLLED DOCUMENT. |                  | DWN P FORTNEY 11/9/88    | <b>STE</b> TE Connectivity  |              |       |
| DIMENSIONS: INCHES                     |                  | CHK MS FEHER 11/9/88     |   |              |       |
| TOLERANCES UNLESS OTHERWISE SPECIFIED: |                  | APVD K RANDOLPH 11/11/88 | NAME  |              |       |
| 0 PLC ± -                              |                  | PRODUCT SPEC             | RECEPTACLE ASSY, ULTRA-FAST, LOOSE PIECE, .110/.125 SERIES, 22-18 AWG |              |       |
| 1 PLC ± -                              |                  | 108-2043                 | SIZE  |              |       |
| 2 PLC ± -                              |                  | APPLICATION SPEC         | CAGE CODE   |              |       |
| 3 PLC ± .015                           |                  | 114-2123                 | DRAWING NO  |              |       |
| 4 PLC ± -                              |                  | WEIGHT -                 | RESTRICTED TO   |              |       |
| ANGLES ± -                             |                  | CUSTOMER DRAWING         | A3 00779 C-520084   |              |       |
| MATERIAL SEE TABLE                     | FINISH SEE TABLE | SCALE 5:1                |   | SHEET 1 OF 1 | REV P |

## X-ON Electronics

Largest Supplier of Electrical and Electronic Components

*Click to view similar products for [Terminals](#) category:*

*Click to view products by [TE Connectivity](#) manufacturer:*

Other Similar products are found below :

[HT-13-10](#) [71M-250-32-NB](#) [01-2065-1-0216](#) [00581P0075](#) [M10-10RX](#) [M10BCK](#) [60205-1](#) [604200-1](#) [60598-1-CUT-TAPE](#) [60617-1-C](#) [60873-1](#) [M14-516R/SK](#) [M14-6RSX](#) [M18-8FBX](#) [M18-8R/LX](#) [M18BCK](#) [61314-6-C](#) [61-S](#) [61-SN-A](#) [62-NBM-A](#) [63-S](#) [640179-1](#) [640917-2-CUT-TAPE](#) [6501550002](#) [66107-2-C](#) [696683-1](#) [696834-1](#) [696861-1](#) [696931-1](#) [696999-1](#) [M8-516RK](#) [M86700006](#) [MA250DMFMX-A](#) [701-2007](#) [701-2307](#) [701-7761-03](#) [70F-110-32-PB](#) [718-N-A](#) [71M-187-20-NBL](#) [71M-250-32-NBL](#) [72F-187-20-NBL](#) [72M-250-32-NBL](#) [7310](#) [73F-250-32](#) [73F-250-32-NL](#) [F14-10C](#) [F-1M](#) [751-250](#) [76650-5002](#) [76828-149](#)