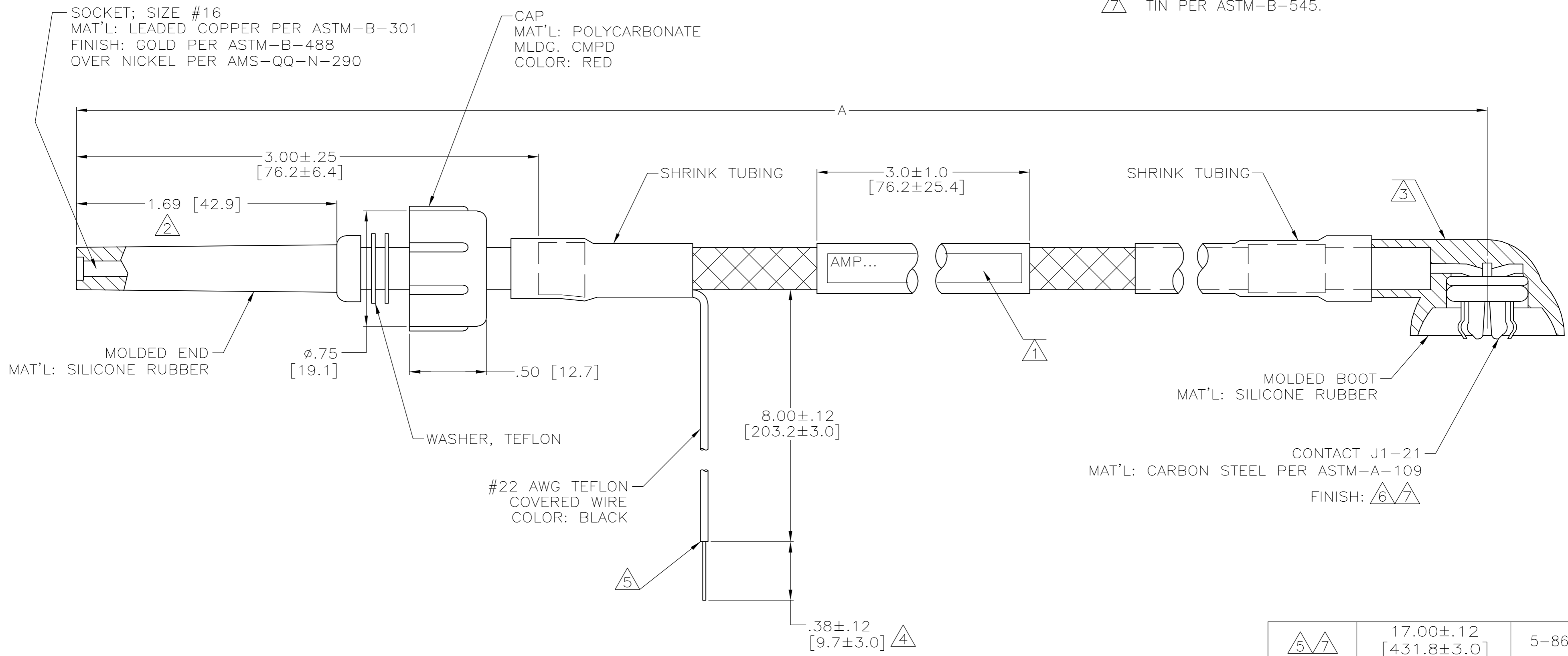


THIS DRAWING IS UNPUBLISHED. RELEASED FOR PUBLICATION - N/A .
 © COPYRIGHT N/A BY TYCO ELECTRONICS CORPORATION. ALL RIGHTS RESERVED.

LOC	DIST	REVISIONS					
DF	S0	P	LTR	DESCRIPTION	DATE	DWN	APVD
		F		REV PER ECO-05-005459	08-05	AA	DE

- ① MARKED PER MIL-STD-130.
- ② TO MATE WITH ANY AMP LGH-1L RECEPTACLE WITH A 1.69 [43.0] BARREL DEPTH.
- ③ TO MATE WITH J1-21 C.R. TUBE CAP.
- ④ PIGTAIL IS SOLDER DIPPED. (861084-1 & -2 ONLY)
- ⑤ INSULATION CUT, BUT NOT REMOVED. (5-861084-2 ONLY)
- ⑥ TIN-LEAD 93/7 OR TIN PER ASTM-B-545.
- ⑦ TIN PER ASTM-B-545.



⑤ ⑦	17.00 ± .12 [431.8 ± 3.0]	5-861084-2
④ ⑥	17.00 ± .12 [431.8 ± 3.0]	861084-2
④ ⑥	12.00 ± .12 [304.8 ± 3.0]	861084-1
REMARKS	DIM A	PART NO.

THIS DRAWING IS A CONTROLLED DOCUMENT.		DWN C.C.THOMAS 12-AUG-92	Tyco Electronics Corporation Harrisburg, Pa 17105-3608	
DIMENSIONS: INCHES [mm]	TOLERANCES UNLESS OTHERWISE SPECIFIED:	CHK S.GLATFELTER 25-AUG-92	NAME S.GLATFELTER	
	0 PLC ± -	APVD S.GLATFELTER 25-AUG-92	PRODUCT SPEC	
	1 PLC ± -	APPLICATION SPEC	-	
MATERIAL SEE CALLOUTS	FINISH SEE CALLOUTS	WEIGHT -	SIZE A2	CAGE CODE 00779
CUSTOMER DRAWING		SCALE 2:1	DRAWING NO C=861084	RESTRICTED TO -
		SHEET 1	OF 1	REV F

X-ON Electronics

Largest Supplier of Electrical and Electronic Components

Click to view similar products for [Specialised Cables category](#):

Click to view products by [TE Connectivity manufacturer](#):

Other Similar products are found below :

[GP-IE515546DS-002](#) [96CB-L2020PIB2](#) [1200740161](#) [R88ACAKA0015SRE](#) [R88ACAWL005SDE](#) [1300660042](#) [1300660201](#) [1971465-2](#)
[22733-8](#) [2R7004A20F060](#) [SSL009PC2DC012N](#) [FC2A-KC6C](#) [CCSFCBF2](#) [XS2WM12PUR4SA10M](#) [XS2WM12PVC4SA10M](#) [05AU05](#)
[UCABLE](#) [10114734-2010LF](#) [XW2Z010H3](#) [XW2Z010H1](#) [5-1589827-8](#) [5-1589827-4](#) [861084-1](#) [XW2Z200JB24](#) [5-1589956-8](#)
[CR4000A76M020](#) [1201140211](#) [1300140039](#) [CR4000A76M005](#) [CR4006A76M005](#) [10077488-N0550FDLF](#) [XW2ZRY150C](#) [0243 009 05](#)
[0243 009 20](#) [0243 009 36](#) [0243 009 26](#) [0243 009 33](#) [0243 009 23](#) [0243 009 01](#) [0243 009 30](#) [0243 008 05](#) [0243 008 36](#) [0243 008 23](#) [0243 008](#)
[01](#) [0243 008 29](#) [0243 011 05](#) [0243 011 20](#) [0243 011 36](#) [0243 011 26](#) [0243 011 23](#)