

4

3

2

1

THIS DRAWING IS UNPUBLISHED.

RELEASED FOR PUBLICATION

---

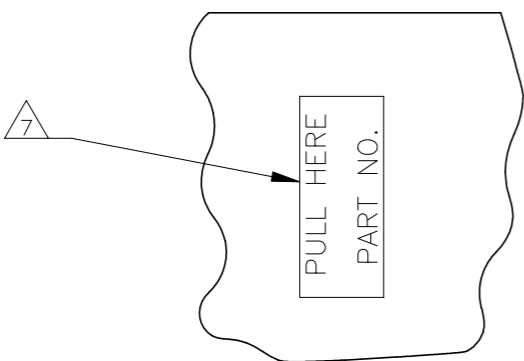
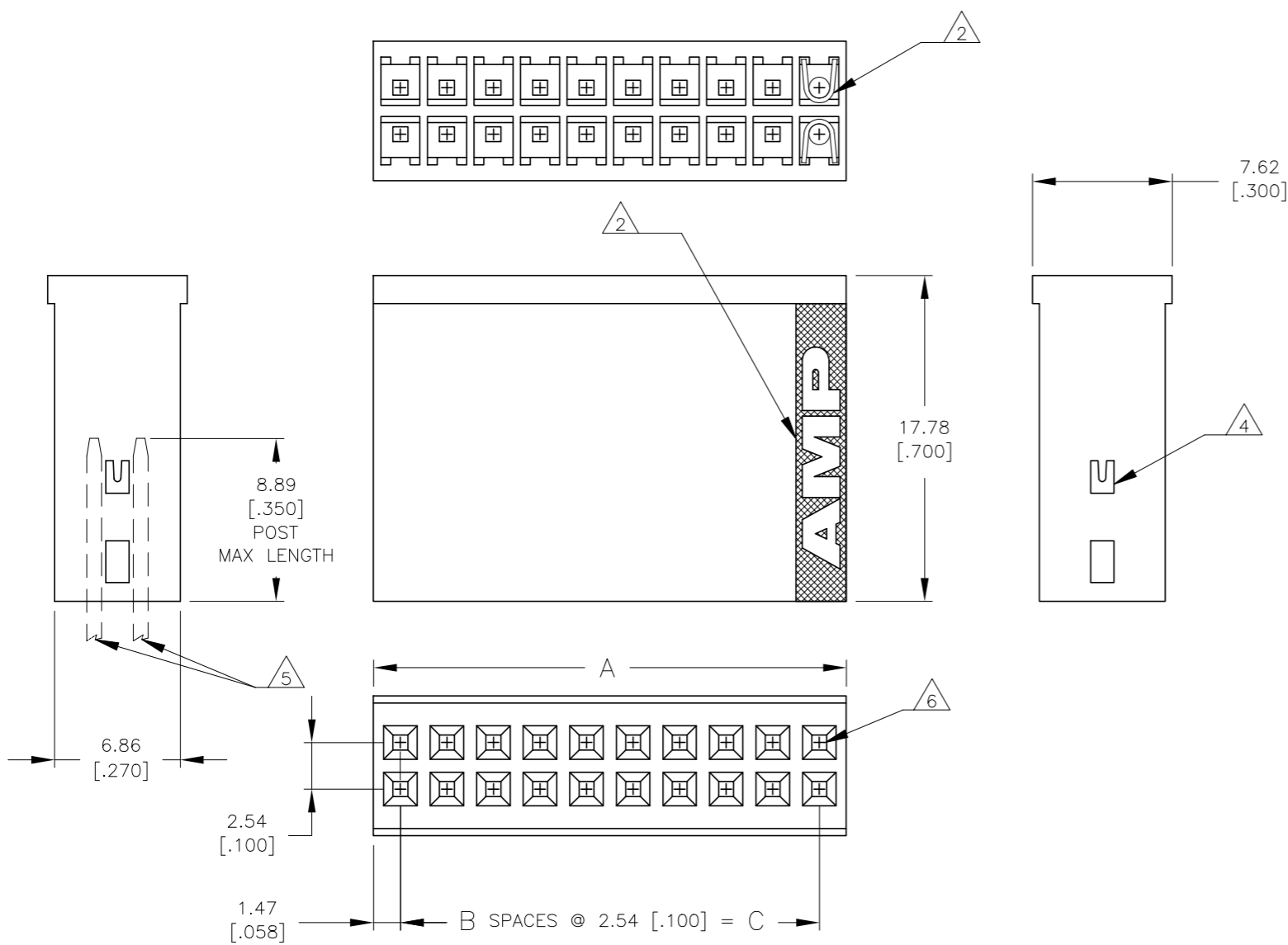
© COPYRIGHT - By -

ALL RIGHTS RESERVED.

REVISIONS

P	LTR	DESCRIPTION	DATE	DWN	APVD
	P4	REVISED PER ECO-16-009321	23JUN2016	NK	JO
	R	REVISED PER ECO-18-000976	17MAY2018	RS	JO
	R1	REVISED PER ECO-19-016615	05NOV2019	RS	JO

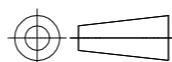
- 1 PULL ON HOUSING TO REMOVE FROM POSTS. DO NOT CONFINE THE CONDUCTORS OR PULL ON THE CONDUCTORS DURING REMOVAL ACTION.
- 2 ACCEPTS CONTACT P/N 87124.
- 4 EXTRACTION SLOT MAY BE PARTIALLY FLASHED OVER ONE END ONLY.
- 5 0.62 [.025] SQUARE POST SHOWN FOR REFERENCE ONLY.
- 6 CAVITY ACCEPTS 0.62 [.025] SQUARE POST (TYPICAL).
- 7 MARKED AS SHOWN IN APPROXIMATE CENTER OF HOUSING. 'PULL HERE' AND 'PART NO.' WILL APPEAR ON HOUSINGS 6 POSITIONS AND LARGER.
- 8 AMP LOGO MOLDED IN TEXTURED AREA, AREA RAISED .0003 - .0007 HIGH AND MAY BE ON EITHER SIDE OF THE PART.



7						
7	STAMPED	20.32 [.800]	8	23.27 [.916]	18	1-87133-6
7	UNSTAMPED	20.32 [.800]	8	23.27 [.916]	18	1-87133-5
7	STAMPED	17.78 [.700]	7	20.73 [.816]	16	1-87133-4
7	UNSTAMPED	17.78 [.700]	7	20.73 [.816]	16	1-87133-3
7	STAMPED	12.70 [.500]	5	15.65 [.616]	12	1-87133-2
7	UNSTAMPED	12.70 [.500]	5	15.65 [.616]	12	1-87133-1
7	STAMPED	7.62 [.300]	3	10.57 [.416]	8	1-87133-0
7	UNSTAMPED	7.62 [.300]	3	10.57 [.416]	8	87133-9
7	STAMPED	5.08 [.200]	2	8.03 [.316]	6	87133-8
7	UNSTAMPED	5.08 [.200]	2	8.03 [.316]	6	87133-7
7	STAMPED	22.86 [.900]	9	25.81 [1.016]	20	87133-6
7	STAMPED	10.16 [.400]	4	13.11 [.516]	10	87133-5
7	STAMPED	2.54 [.100]	1	5.49 [.216]	4	87133-4
	UNSTAMPED	22.86 [.900]	9	25.81 [1.016]	20	87133-3
	UNSTAMPED	10.16 [.400]	4	13.11 [.516]	10	87133-2
	UNSTAMPED	2.54 [.100]	1	5.49 [.216]	4	87133-1
	REMARKS	C	B	A	NO. OF POSITIONS	PART NUMBER

THIS DRAWING IS A CONTROLLED DOCUMENT.

DIMENSIONS:  
mm [INCHES]



TOLERANCES UNLESS OTHERWISE SPECIFIED:

0 PLC	± -
1 PLC	± -
2 PLC	± 0.13 [.005]
3 PLC	± -
4 PLC	± -
ANGLES	± -

MATERIAL  
GLASS FILLED POLYESTER  
COLOR: DARK BROWN OR BLACK

FINISH  
-

DWN R BROWN 27OCT2006

CHK M MILLER 27OCT2006

APVD M MILLER 27OCT2006

PRODUCT SPEC

APPLICATION SPEC

WEIGHT -

CUSTOMER DRAWING

**STE** TE Connectivity Ltd.

NAME

HOUSING, LOCKING CLIP,  
.64[.025] SQUARE POST, 2.54[.100] CL  
CLOSED END

SIZE CAGE CODE DRAWING NO RESTRICTED TO

A3 00779 C=87133

SCALE 3:1 SHEET 1 OF 1 REV R1

## X-ON Electronics

Largest Supplier of Electrical and Electronic Components

*Click to view similar products for [Headers & Wire Housings](#) category:*

*Click to view products by [TE Connectivity](#) manufacturer:*

Other Similar products are found below :

[892-18-020-10-001101](#) [58102-G61-06LF](#) [582553-1](#) [0009485154](#) [009176003701906](#) [0050291907](#) [LY20-4P-DT1-P1E-BR](#) [02.125.8002.8](#)  
[609-3404](#) [61062-3](#) [61082-181009](#) [622-3653LF](#) [63453-116](#) [636-1030](#) [636-1427](#) [636-3427](#) [636-4007](#) [641938-9](#) [641991-4](#) [644827-2](#) [65817-](#)  
[010LF](#) [65817-015LF](#) [65863-015LF](#) [66207-023LF](#) [67095-007LF](#) [67601157](#) [68645-018](#) [68648-049](#) [70.362.1628.0](#) [70-4210](#) [70-4226B](#) [70-](#)  
[4853B](#) [707-5020](#) [707-5028](#) [71.350.2428.0](#) [71918-208LF](#) [71961-016LF](#) [733-134](#) [733-162](#) [754199-000](#) [760-3052](#) [787-8014-00](#) [79531-3000](#)  
[FCN-360C032-B](#) [FCN-367T-T012/H](#) [FCN-723D010/2](#) [80.063.4001.1](#) [800-90-001-10-001000](#) [800-90-010-10-002000](#) [801-43-002-10-013000](#)