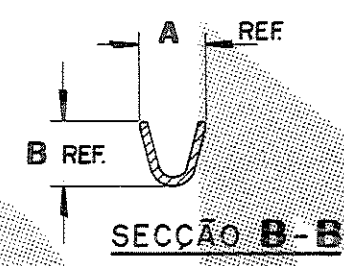
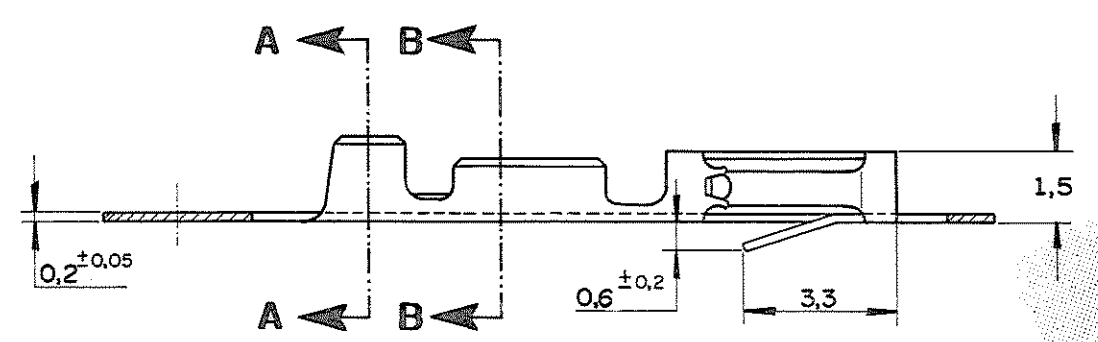
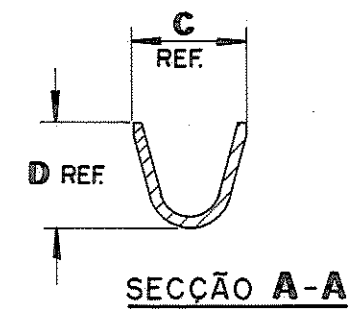
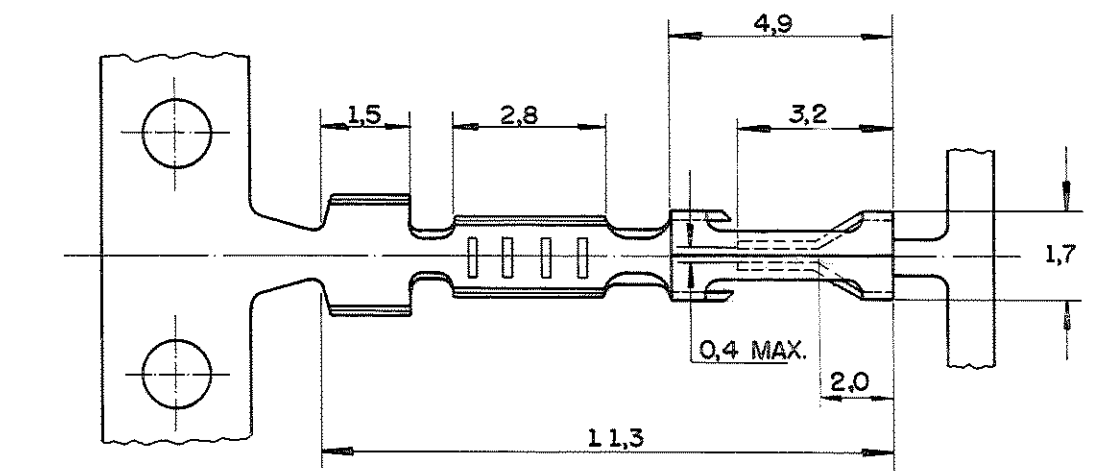


1 of 1  
C 626 271  
C 880 061

DO NOT SCALE  
DIMENSIONS IN mm

**METRIC**



**NOTAS:**

- 1 - BOBINA C/ 10.000 Pcs P/ MINI APLICADOR E PRENSA MANUAL
- 2 - BOBINA C/ 5.000 Pcs P/ MINI APLICADOR E PRENSA MANUAL
- 3 - BOBINA C/ 10.000 Pcs P/ STRIPPER CRIMPER
- 4 - BOBINA C/ 5.000 Pcs P/ STRIPPER CRIMPER
- 5 - 0,38 µm OURO SELETIVO NA AREA DE CONTATO, ESTANHO NA ÁREA DE CRIMPAGEM SOBREBANHO TOTAL 0,76 µm NIQUEL.
- 6 - 0,76 µm OURO SELETIVO NA AREA DE CONTATO, ESTANHO NA ÁREA DE CRIMPAGEM SOBREBANHO TOTAL 0,76 µm NIQUEL
- 7 - 2,5 µm ESTANHO SOBRE 0,76 µm NIQUEL
- 8 - DIÂMETRO SOBRE O ISOLANTE PARA CONTATO Nº 626 271 1,65 MAX.  
Nº 880 061 1,40 MAX.
- 9 - BITOLA DO CONDUTOR PARA CONTATO Nº 626 271 # 20~24 AWG (0,5-0,2mm<sup>2</sup>)  
Nº 880 061 # 24~28 AWG (0,2-0,08mm<sup>2</sup>)
- 10 - FLASH DE OURO NA ÁREA DE CONTATO, ESTANHO NA ÁREA DE CRIMPAGEM, SOBREBANHO TOTAL 0,76 µm NIQUEL.
- 11 OBSOLETE PARTS: OBSOLETE CIS STREAMLINING PER D.RENAUD/D.SINISI

**OBSOLETE**  
11

1.7	2.5	1.5	1.8		10	880 167 - 6	3-880 061 - 6	1-880 061 - 6	2-880 061 - 6	880 061 - 6
2.0	2.5	1.7	2.0		10	880 166 - 6	3-626 271 - 6	1-626 271 - 6	2-626 271 - 6	626 271 - 6
↑	↑	↑	↑		7	880 167 - 5	3-880 061 - 5	1-880 061 - 5	2-880 061 - 5	880 061 - 5
↑	↑	↑	↑		6	880 167 - 2	3-880 061 - 2	1-880 061 - 2	2-880 061 - 2	880 061 - 2
1.7	2.5	1.5	1.8	BRONZE FOSFOROSO	5	880 167 - 1	3-880 061 - 1	1-880 061 - 1	2-880 061 - 1	880 061 - 1
↑	↑	↑	↑		7	880 166 - 5	3-626 271 - 5	<del>1-626 271 - 5</del>	2-626 271 - 5	626 271 - 5
↑	↑	↑	↑		6	880 166 - 2	3-626 271 - 2	<del>1-626 271 - 2</del>	2-626 271 - 2	626 271 - 2
2.0	2.5	1.7	2.0	BRONZE FOSFOROSO	5	880 166 - 1	3-626 271 - 1	<del>1-626 271 - 1</del>	2-626 271 - 1	626 271 - 1
<b>D</b>	<b>C</b>	<b>B</b>	<b>A</b>	<b>MATERIAL E ACABAMENTO</b>		<b>PART Nº PEÇA SOLTA</b>	<b>PART Nº</b>	<b>PART Nº</b>	<b>PART Nº</b>	<b>PART Nº</b>

**CUSTOMER DWG**  
for REFERENCE ONLY

THIS DRAWING IS UNPUBLISHED RELEASED FOR PUBLICATION  
 © COPYRIGHT 19 BY AMP DO BRASIL LTDA S.P. ALL INTERNATIONAL RIGHTS RESERVED AMP PRODUCTS MAY BE COVERED BY U.S. AND FOREIGN PATENTS AND/OR PATENTS PENDING.  
 TOLERANCES UNLESS OTHERWISE STATED  
 DEC. ± 0,5  
 ANGLES ± 1°

**AMP** AMP do BRASIL LTDA.  
São Paulo, Brasil

ISS	REVISION	RECORD	DR	CHK	DATE	ISS	REVISION	RECORD	DR	CHK	DATE

DESCRIPTION  
**AMP MODU MOD IV CONTACT**

DWG NO **626 271**  
**880 061**

SHEET 1 of 1

## X-ON Electronics

Largest Supplier of Electrical and Electronic Components

*Click to view similar products for [Headers & Wire Housings](#) category:*

*Click to view products by [TE Connectivity](#) manufacturer:*

Other Similar products are found below :

[95000-104TRLF](#) [10135584-644402LF](#) [DF62W-EP2022PCA](#) [95000-106TRLF](#) [DF62W-2022SCA](#) [DF62W-EP2022PC](#) [2203348](#) [DF62W-2022SC](#) [1084018](#) [1029039](#) [1084017](#) [802-10-012-10-002000](#) [1112640](#) [1112639](#) [891-007-9SS-BST1T](#) [000-34000](#) [0008550134](#) [0009482033](#) [0009507031](#) [57102-F02-18ULF](#) [57102-S06-03LF](#) [57202-S52-04LF](#) [PCN6-15S-2.5E](#) [0039019024](#) [58102-G61-06LF](#) [582553-1](#) [0009485154](#) [0009508121](#) [0022285053](#) [0050291907](#) [018731A](#) [LY20-4P-DT1-P1E-BR](#) [02.125.8002.8](#) [60101931](#) [60598-1 \(Cut Strip\)](#) [M1625-3R/100](#) [61062-3](#) [61082-181009](#) [CSU011177004](#) [636-1427](#) [638009-1](#) [641938-9](#) [641991-4](#) [644168-1](#) [644827-2](#) [647662-1](#) [65039-019ELF](#) [65692-001LF](#) [65781-018](#) [65781-047](#)