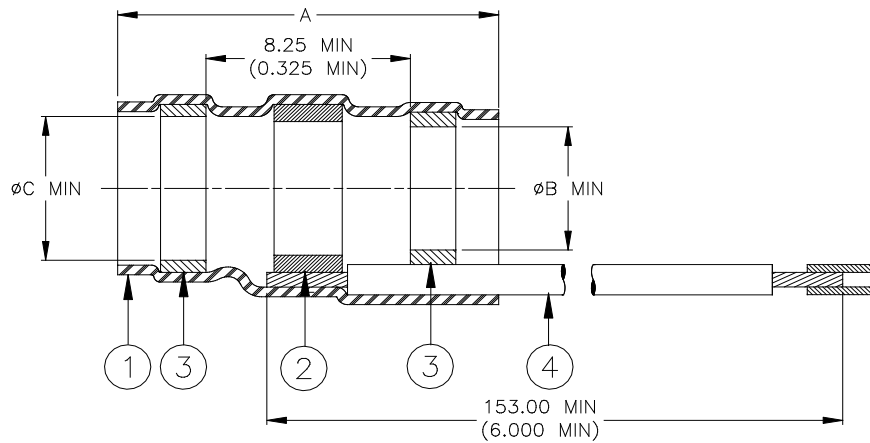


CUSTOMER DRAWING




Product Name	Mark	Product Dimensions		
		A±1.75 [A±0.070]	øB min	øC min
SO63-1-9036-22	SO631R	16.50 [0.650]	1.90 [0.075]	2.65 [0.105]
SO63-1-9036-20				
SO63-1-9036-18				
SO63-2-9036-22	SO632R	16.50 [0.650]	2.65 [0.105]	3.55 [0.145]
SO63-2-9036-20				
SO63-2-9036-18				
SO63-3-9036-22	SO633R	16.50 [0.650]	4.30 [0.170]	5.00 [0.200]
SO63-3-9036-20				
SO63-3-9036-18				
SO63-4-9036-22	SO634R	19.10 [0.750]	5.95 [0.235]	6.50 [0.255]
SO63-4-9036-20				
SO63-4-9036-18				
SO63-5-9036-22	SO635R	19.10 [0.750]	7.00 [0.275]	7.60 [0.300]
SO63-5-9036-20				
SO63-5-9036-18				

MATERIALS

- INSULATION SLEEVE: Heat-shrinkable, transparent blue, radiation cross-linked modified polyvinylidene fluoride. Marked per table.
- SOLDER PREFORM WITH FLUX AND THERMAL INDICATOR RING:
 SOLDER: TYPE Sn63 per ANSI / J-STD-006.
 FLUX: TYPE ROL1 per ANSI / J STD-004.
 THERMAL INDICATOR RING: Fusible alloy with melt point of 221°C.
- MELTABLE RINGS: Environment resistant fluorocarbon-based thermoplastic
- PRE-INSTALLED LEAD: Raychem 55PC6121-GA. "GA"=size (AWG) of lead, color: white with 2 black stripes.

APPLICATION

- These parts are designed to provide an environment resistant shield termination on cables, rated for 125°C min. having tin or silver-plated shields, and jackets compatible with the insert material. See M83519/2 or consult TE Connectivity.
- When properly installed, these parts will meet the performance requirements of Raychem RT-1404 and SAE-AS-83519/2.
- Part selection: Measure cable jacket diameter at its maximum point. Select the smallest terminator that has a "B" diameter larger than the cable diameter.
- Cable is to be stripped to expose 6.0 -7.5mm [0.235-0.295] of shield.
- Part may be installed using any Raychem approved convection or infra-red heating tool. Tools must be equipped with a suitable reflector. For detailed assembly instruction see Raychem RCPS-100-70.

		Raychem Devices	TITLE: SOLDERSLEEVE DEVICE WITH PRE-INSTALLED LEAD, IMMERSION RESISTANT			
Unless otherwise specified dimensions are in millimeters. [Inches dimensions are shown in brackets]			DOCUMENT NO.: SO63-X-9036-GA			
TOLERANCES: 0.00 N/A 0.0 N/A 0 N/A	ANGLES: N/A ROUGHNESS IN MICRON	Tyco Electronics reserves the right to amend this drawing at any time. Users should evaluate the suitability of the product for their application.	REV.:	DATE:		
			B	17-Feb-2017		
PREPARED BY: mforonda	ECO NUMBER: ECO-17-002137	REPLACES: D060206	CAGE CODE: 06090	SCALE: ---	SIZE: A	SHEET: 1 of 1

© 2005-2017 TE Connectivity Corporation. All rights reserved. SolderSleeve is a trademark of Tyco Electronics Corporation

If this document is printed it becomes uncontrolled. Check for the latest revision.

X-ON Electronics

Largest Supplier of Electrical and Electronic Components

Click to view similar products for te connectivity manufacturer:

Other Similar products are found below :

[570416-000](#) [CLTEQ-M81CE-SSRELAY-4-20V](#) [D38999/24FJ4AN](#) [358838-000](#) [4-1195131-0](#) [650069-000](#) [SMD100-2](#) [CB-1022B-78](#)
[RM707012](#) [RP410012](#) [MMS42](#) [1-640426-8](#) [2EDL4CM](#) [DTS20W19-11PD-3028-LC](#) [RM202615](#) [NC6-P104-06](#) [TXR64AB90-3616AI](#)
[MSPS103B](#) [DTS26F21-41AE](#) [DTS26F21-41PE-LC](#) [DTS26F21-11SE-3028-LC](#) [1932144-1](#) [293545-4](#) [LVR125S](#) [MS27466T25F4PB](#) [CKB-](#)
[38-78010](#) [1206SFF150F/63-2](#) [5-2027513-8](#) [D38999/20JB35HA](#) [D38999/24WJ20PA](#) [1754138-1](#) [TE1500A2R2J](#) [DTS24F25-29PC-3028-LC](#)
[164-8033-08](#) [D38999/24WG11HA](#) [D38999/24WG11HN](#) [MS27467T21F11H](#) [DJT16E21-11HA](#) [1206SFH150F/24-2](#) [1-532955-3](#) [DTS24F19-](#)
[11SC-3028-LC](#) [DTS24F21-41HN-LC](#) [DTS24F21-41AN](#) [DTS24F21-41PN-LC](#) [DBAS 70-7-0 SN 090-1A SCC](#) [MS27467T21F35J](#)
[MS27467T21F11J](#) [MS27467T21F16H-LC](#) [MS27467T21F35H](#) [MS27467T21F41H-LC](#)