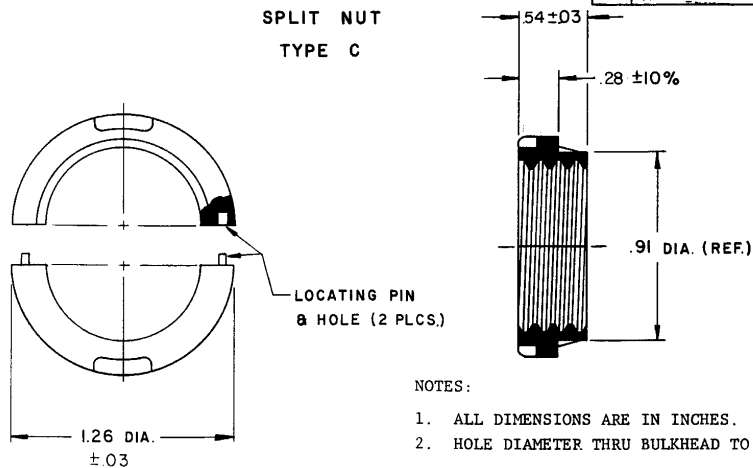


REVISIONS			
LTR	DESCRIPTION	DATE	APPROVED
B		5-18-83	ON REC. BULK SAS 2/1
C	CHANGED -13 NYLON, 30% GLASS FILLED WAS -13 NYLON, 35% GLASS FILLED	12/13/83	93 SAS

SPLIT NUT
TYPE C



NOTES:

1. ALL DIMENSIONS ARE IN INCHES.
2. HOLE DIAMETER THRU BULKHEAD TO BE $.94 \pm .02$

ORDERING INFORMATION:

BASE PART NUMBER 207A412 -13
 FEEDTHROUGH MATERIAL -13 NYLON, 30% GLASS FILLED

SPECIFICATION CONTROL DRAWING (LIMITED DISTRIBUTION)

THIS DRAWING AND THE INFORMATION SET FORTH HEREON ARE THE PROPERTY OF RAYCHEM CORPORATION, AND ARE TO BE HELD IN TRUST AND CONFIDENCE. PUBLICATION, DUPLICATION, DISCLOSURE, OR USE FOR ANY PURPOSE NOT EXPRESSLY AUTHORIZED IN WRITING BY RAYCHEM CORPORATION IS PROHIBITED.	DRAWN	C. WARREN 11/2/82	Raychem RAYCHEM CORPORATION 300 CONSTITUTION DRIVE MENLO PARK, CALIFORNIA 94025	
	CHECKED	S. P. WOOD 11-2-82		
	DESIGN APPD		TITLE	SPLIT NUT - TYPE C
	MFG APPD	R. B. 11/16/82	CODE IDENT.	DWG. NO. 207A412-13
	QC APPD	D. HAY 11-8-82	NO. 08080	
MKTG APPD	J. HOFFMAN 11/16/82			
TECH SER	RELIANCE 11/8/82			
DO NOT SCALE THIS DRAWING	PROJECT	SIZE B	SCALE	SHEET OF

X-ON Electronics

Largest Supplier of Electrical and Electronic Components

Click to view similar products for [Screws & Fasteners](#) category:

Click to view products by [TE Connectivity](#) manufacturer:

Other Similar products are found below :

[5721-1440-1/4-SS](#) [593503FX](#) [0098.0094](#) [0098.9206](#) [0098.9219](#) [0098.9221](#) [0098.9262](#) [596-2114-013](#) [59781-4](#) [59781-6](#) [0098.0026](#)
[0098.9210](#) [0098.9212](#) [60227-01](#) [60227-04](#) [60227-08](#) [60228-09](#) [618-00001](#) [62153-03](#) [62153-11](#) [M316-KSSTMCZ100](#) [M3440-SS](#) [M3442-SS](#) [M3448-SS](#) [6291A](#) [6292-1](#) [6-306105-9](#) [6-306131-4](#) [690432-1](#) [699161-000](#) [700989](#) [7-18023-1](#) [7-21002-8](#) [7230-3](#) [7235-3](#) [7248-1](#) [7248-2](#)
[73542-02](#) [CAPTIVE SHORT THUMBSCREW](#) [745564-1](#) [748174-2](#) [F03-02](#) [SUS316](#) [F1209](#) [751-00001](#) [80011](#) [809704-1](#) [8700](#) [8860220](#)
[9047](#) [95000002B](#) [9885-2](#)