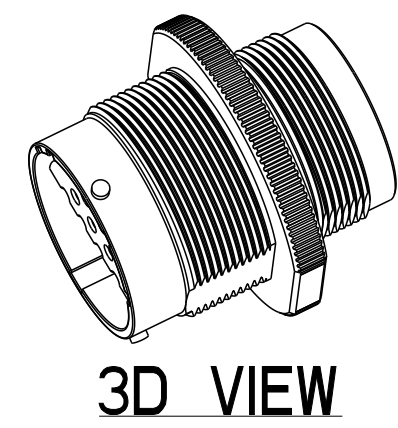
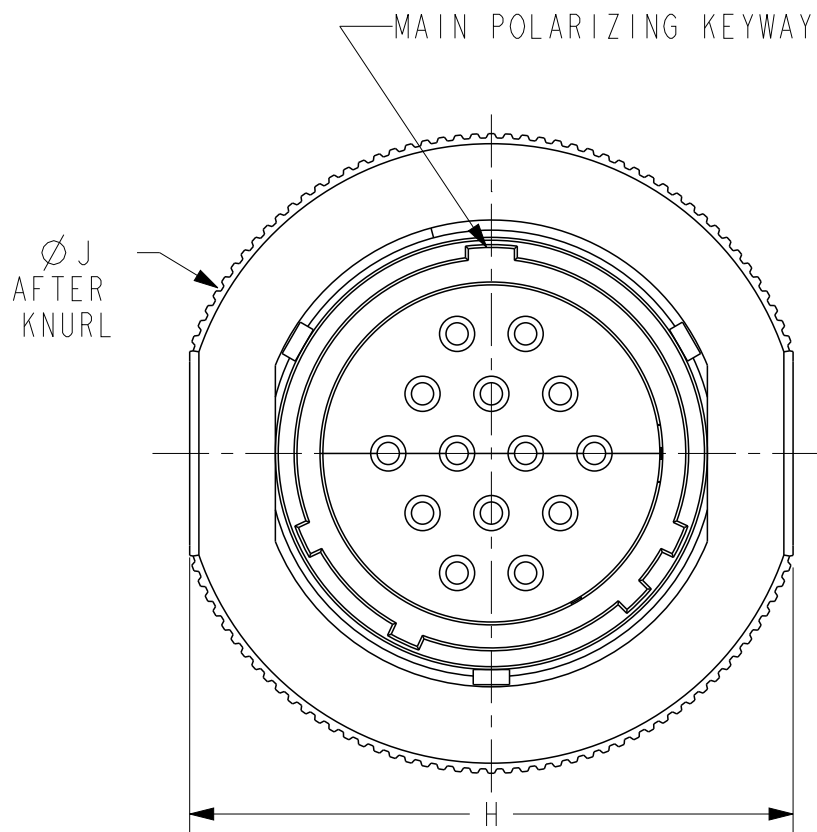
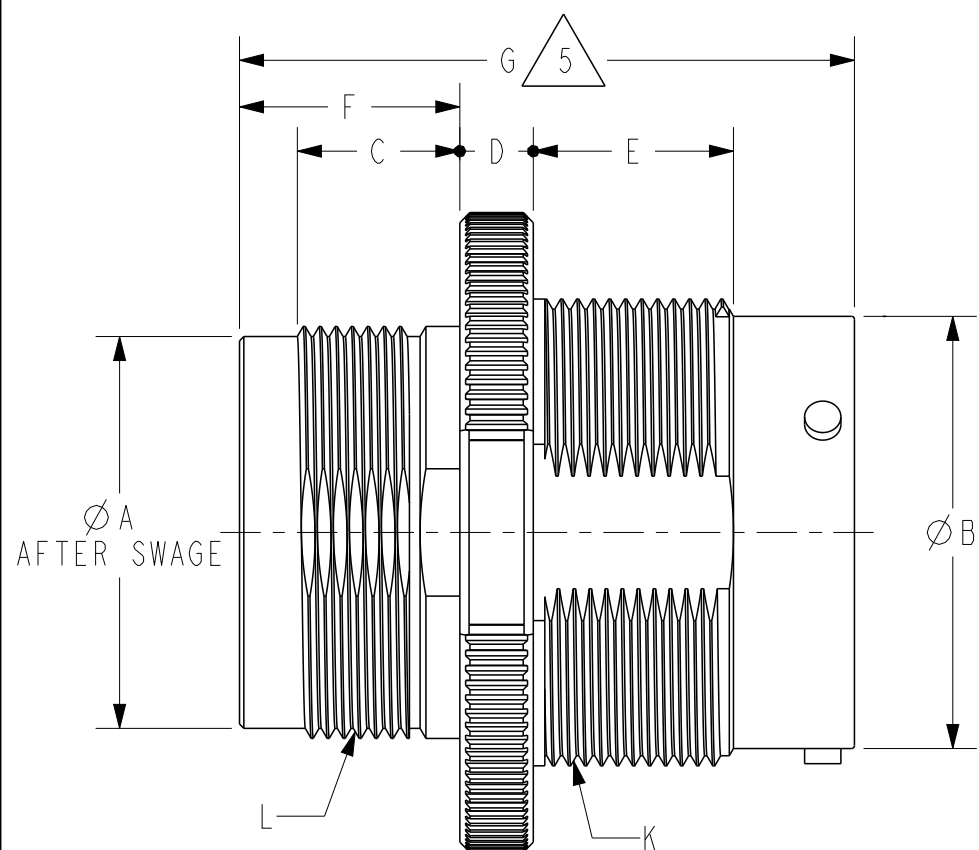


REVISIONS

P	LTR	DESCRIPTION	DATE	DWN	APVD
C		REVISED PER E.O P20543	7/14/10	I.G	RDR
D		REVISED PER PCN E-18-018867	12/04/18	J.A	D.M
D1		REVISED PER PCN E-19-007592	01/09/20	CO	IG
D2		REVISED PER PCN E-20-002582	02/21/2020	CO	IG



PART NUMBER	SIZE	Ø A [mm]	Ø B REF [mm]	C [mm]	D [mm]	E [mm]	F [mm]	G REF [mm]	H [mm]	Ø J [mm]	K THREAD	L THREAD
8NXXXX-24-XXP/S	24	Ø 1.368 [34.75]	Ø 1.500 [38.10]	.565 [14.35]	.255 [6.48]	.695 [17.65]	.765 [19.43]	2.248 [57.10]	2.095 [53.21]	2.220 [56.39]	1.625-18UNEF-2A MODIFIED	1.4375-18UNEF-2A MODIFIED
8NXXXX-32-XXP/S	32	Ø 1.925 [48.90]	Ø 2.110 [53.59]	.520 [13.21]	.300 [7.62]	.695 [17.65]	.720 [18.29]	2.348 [59.64]	2.925 [74.30]	3.200 [81.28]	2.250-16UN-2A	2.000-18UNS-2A MODIFIED

9. SEE SHEET 2 FOR CONTINUED NOTES

8. PLATING: CLEAR TRIVALENT CHROMATE CONVERSION COATING (ROHS COMPLIANT)

7. MATERIAL: RECEPTACLE HOUSING:AL 6000 SERIES; GROMMET:VMQ (RED-ORANGE); RETAINING RING: PA66 GF10

6. PART NUMBER INFO: XXXX = CATERPILLAR PART NO. 24/32 = RECEPTACLE SHELL SIZE; XX = ARRANGEMENT NO.

5. TOTAL DIMENSION WITH WIRE SEAL.

4. FOR CONTACTS AND WIRES PERFORMANCE AND APPLICATION CHARACTERISTICS SEE CUSTOMER DRAWING 4025-001-0000.

3. FOR ARRANGEMENT OF CONTACT LOCATION SEE CUSTOMER DRAWING 4025-006-0000.

2. RECEPTACLE IS SUPPLIED WITH DUST CAP PN 6VI830 (SIZE 24), AND 6VI827 (SIZE 32) (NOT SHOWN).

1. CONSULT THE FACTORY FOR ELECTRICAL AND MATERIAL SPECIFICATIONS.

NOTES:

CONTACT SIZE	MIN. INSUL O.D.	MAX. INSUL O.D.	WIRE RANGE [mm <sup>2</sup> ] REF ONLY
4	.280 [7.11]	.420 [10.67]	4 AWG [21.0]
8	.190 [4.83]	.240 [6.10]	8-10 AWG [8.0-5.0]
12	.134 [3.40]	.170 [4.32]	10-14 AWG [5.0-2.0]
16	.100 [2.54]	.134 [3.40]	14-20 AWG [2.0-0.5]

THIS DRAWING IS A CONTROLLED DOCUMENT.

DWN I. GRANTCHAROVA 3/24/08  
 CHK R. MILLIGAN 7/14/10  
 APVD S. BEARD 7/14/10

**STE** TE Connectivity

NAME RECEPTACLE CONNECTOR SHELL SIZE 24 & 32 C.E. SERIES

PRODUCT SPEC - APPLICATION SPEC - WEIGHT -

SIZE A3 CAGE CODE 00779 DRAWING NO. 8NXXXX-24/32-XXP/S RESTRICTED TO -

CUSTOMER DRAWING SCALE 1:1 SHEET 1 OF 2 REV D2

DIMENSIONS: in [mm]	TOLERANCES UNLESS OTHERWISE SPECIFIED:
	0 PLC ±
	1 PLC ±
	2 PLC ±
	3 PLC ±.025 [.64]
	4 PLC ±
MATERIAL	FINISH

4

3

2

1

THIS DRAWING IS UNPUBLISHED

RELEASED FOR PUBLICATION

2018

© COPYRIGHT 2010

BY - TE CONNECTIVITY

ALL RIGHTS RESERVED.

REVISIONS

P	LTR	DESCRIPTION	DATE	DWN	APVD
-	-	SEE SHEET 1	-	-	-

**SIZE 24**  
**RECOMMENDED PANEL CUTOUT**

**SIZE 32**  
**RECOMMENDED PANEL CUTOUT**

Diagram of Size 24 recommended panel cutout showing dimensions: diameter  $\varnothing 1.64$  [41,7] and width 1.53 [38,7].

Diagram of Size 32 recommended panel cutout showing dimensions: diameter  $\varnothing 2.26$  [57,4] and width 2.18 [55,3].

TE INTERNAL PN	DEUTSCH PN	REV	ARRANGEMENT	CONTACT SIZE	QTY	CONTACT TYPE
8N1513-32-37P	8N1513-32-37P	K	32-37	16	37	PIN
8N1515-32-24P	8N1515-32-24P	K	32-24	16	24	PIN
8N1517-32-25P	8N1517-32-25P	K	32-25	4	2	PIN
				8	3	
				12	4	
8N1519-32-12P	8N1519-32-12P	K	32-12	4	1	PIN
				8	3	
				12	8	
8N1534-24-20P	8N1534-24-20P	K	24-20	16	20	PIN
8N1526-24-15P	8N1526-24-15P	K	24-15	8	1	PIN
				12	3	
				16	11	
8N1528-24-14P	8N1528-24-14P	K	24-14	16	14	PIN
8N1530-24-12P	8N1530-24-12P	K	24-12	4	1	PIN
				16	11	
8N1532-24-7P	8N1532-24-7P	K	24-7	4	1	PIN
				8	2	
				12	3	
				16	1	

11. ENDBELL MOUNTING TORQUE:  
 - SIZE 24  
 $124 \pm 17.7$  in-lbf [14  $\pm$  2 Nm]  
 - SIZE 32  
 $159.31 \pm 35.4$  in-lbf [18  $\pm$  4 Nm]

10. PANEL NUT MOUNTING TORQUE:  
 - SIZE 24  
 $361 \pm 60.2$  in-lbf [40.8  $\pm$  6.8 Nm]  
 - SIZE 32  
 $1625 \pm 120.4$  in-lbf [183.6  $\pm$  13.6 Nm]

NOTES: (CONTINUED)

THIS DRAWING IS A CONTROLLED DOCUMENT.		DWN I. GRANTCHAROVA 3/24/08														
DIMENSIONS: in [mm]		CHK R. MILLIGAN 7/14/10														
TOLERANCES UNLESS OTHERWISE SPECIFIED:		APVD S. BEARD 7/14/10	NAME RECEPTACLE CONNECTOR SHELL SIZE 24 & 32 C.E. SERIES													
<table border="0"> <tr> <td>0 PLC</td> <td><math>\pm</math></td> </tr> <tr> <td>1 PLC</td> <td><math>\pm</math></td> </tr> <tr> <td>2 PLC</td> <td><math>\pm</math></td> </tr> <tr> <td>3 PLC</td> <td><math>\pm .025</math> [.64]</td> </tr> <tr> <td>4 PLC</td> <td><math>\pm</math></td> </tr> <tr> <td>ANGLES</td> <td><math>\pm</math></td> </tr> </table>		0 PLC	$\pm$	1 PLC	$\pm$	2 PLC	$\pm$	3 PLC	$\pm .025$ [.64]	4 PLC	$\pm$	ANGLES	$\pm$	PRODUCT SPEC -	RESTRICTED TO -	
0 PLC	$\pm$															
1 PLC	$\pm$															
2 PLC	$\pm$															
3 PLC	$\pm .025$ [.64]															
4 PLC	$\pm$															
ANGLES	$\pm$															
MATERIAL 7		APPLICATION SPEC -	SIZE A3	CAGE CODE 00779	DRAWING NO C-8NXXXX-24/32-XXP/S											
FINISH 8		WEIGHT -	SCALE 1:1		SHEET 2 OF 2											
		CUSTOMER DRAWING	REV D2													

1470-19 (3/13)

## X-ON Electronics

Largest Supplier of Electrical and Electronic Components

*Click to view similar products for [Automotive Connectors](#) category:*

*Click to view products by [TE Connectivity](#) manufacturer:*

Other Similar products are found below :

[003-018-000](#) [60403001](#) [60993906-B](#) [M902-2131](#) [M902-2161](#) [M902-2344](#) [72.330.1035.1](#) [73.353.4028.0](#) [F119300-B](#) [F166900](#) [F258300-B](#)  
[F358300-B](#) [F407400](#) [F444110](#) [F487000](#) [F509500B-B](#) [827153-1](#) [8N1515-32-24P](#) [9-1326729-8](#) [925474-1](#) [928905-1](#) [964562-4](#) [968782-1](#)  
[GT17SA-8DS-HU](#) [98891-1012](#) [98947-1016](#) [12004147](#) [12004475-L](#) [12010290](#) [12010309-B](#) [12015454](#) [12020219-B](#) [12041318-B](#) [12052225-](#)  
[L](#) [12052466](#) [12064869](#) [12004327-B](#) [12015308](#) [12015384](#) [12015909](#) [1-21030-1](#) [12041254](#) [12041318](#) [12047946-B](#) [12047957](#) [12047957-L](#)  
[12059473](#) [12066261](#) [12110546](#) [12110546-B](#)