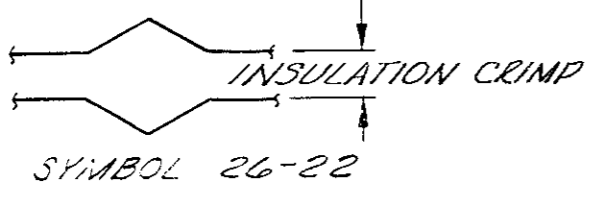
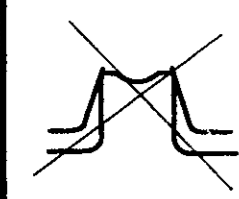
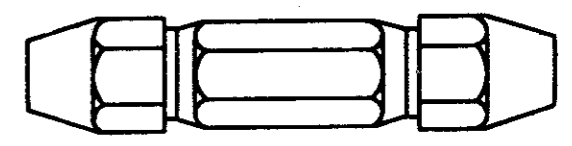
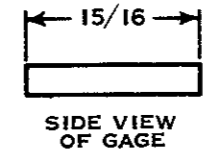
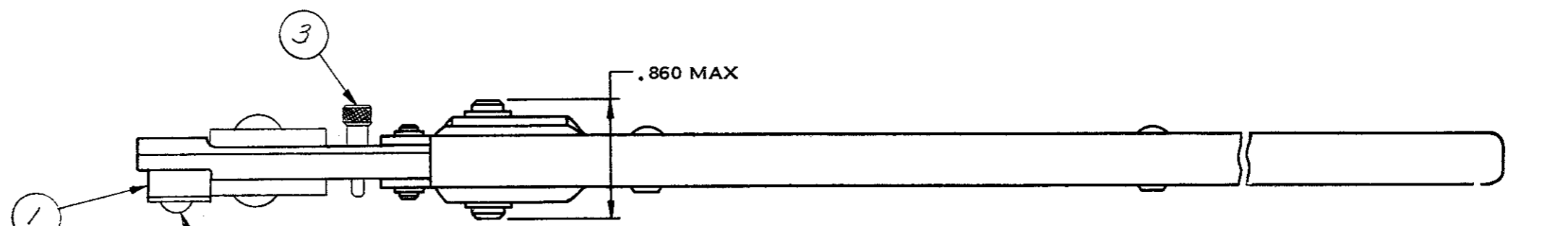


WIRE CRIMP				TERMINAL CRIMP HEIGHT
CRIMP SYMBOL	DIM	GO	NO GO	
26-22	C	.063	.069	

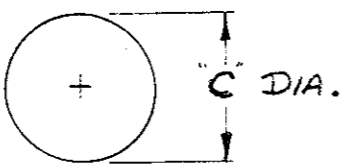
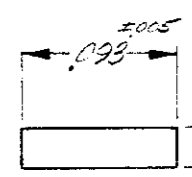


INSULATION CRIMP				TERMINAL CRIMP HEIGHT
CRIMP SYMBOL	DIM	GO	NO GO	
26-22	G	.035	.055	

AT #1 POSITION



SUGGESTED DOUBLE END HANDLE A.G.D. STD.



INSULATION CRIMP WIRE CRIMP
ENLARGED END VIEW OF GAGES

SUGGESTED GAGE DESIGN

- CRIMP GAGE DIMENSIONS APPLY WHEN TOOL IS CLOSED OR BOTTOMED BUT NOT UNDER PRESSURE.
- FOR REPLACEMENT OF PARTS SUCH AS PINS AND SNAP RINGS, ORDER REPAIR KIT NO. 12 218-4.
- FOR REPLACEMENT OF PARTS OTHER THAN PINS AND SNAP RINGS, TOOL IS TO BE RETURNED TO AMP INC. HARRISBURG, PENNA. TO INSURE PROPER CERTI-CRIMP ADJUSTMENT.
- FOR TOOL USAGE, SEE INSTRUCTION SHEET NO. 1538.
- HAND TOOL CAN BE CHECKED BY MEASURING TERMINAL CRIMP HEIGHT.

NO.	DESCRIPTION	BY	CHK	DATE	NUMBER
G-1	Loc M was R	PP	PL	11/17/57	46222
G	REV & REDESIGN	BL	DD	12/2/57	
LTR	REVISION RECORD	DR	CHK	DATE	

1	39364	SPRING-HANDLE	4
2	39207	PIN-ADJUSTMENT	3
1	3-21016-7	SCREW (#8-32 x 3/8 LSTH.)	2
1	125461-1	LOCATOR	1
NO. REQD	NUMBER	NAME	ITEM NO.

©1957 BY AMP INCORPORATED. ALL RIGHTS RESERVED. AMP PRODUCTS COVERED BY PATENTS AND/OR PATENTS PENDING.

CUSTOMER COPY REFERENCE ONLY

DR: T.R. Williams 11/19/57
 CHK: T. Keliagher 12/2/57
 DE: E.J. FINK 12-5-57
 APP: E.J. FINK 12-5-57

MATERIAL-STEEL
 FINISH-BLACK OXIDE
 WEIGHT-1 LBS. 3 OZ.

WIRE - RANGE - INSULATION
 TOLERANCE EXCEPT AS NOTED
 SCALE

CLASS: — II —
 TYPE: SHORT HANDLE TOOL

LOC: M
 NO: 46222
 REV: G-1

DOUBLE ACTION HAND TOOL

CUSTOMER DRAWING

DIMENSIONS IN INCHES DO NOT SCALE PRINT

X-ON Electronics

Largest Supplier of Electrical and Electronic Components

Click to view similar products for [Other Tools](#) category:

Click to view products by [TE Connectivity](#) manufacturer:

Other Similar products are found below :

[CR-0AFL4--332K](#) [568681-1](#) [5800-0090](#) [58061-1](#) [59065-5](#) [59085](#) [00-8273-RDPP](#) [00-8729-WHPP](#) [593033](#) [593072](#) [593564100](#) [593575](#)
[593593](#) [011349-000](#) [CRCW08052740FRT1](#) [LUC-012S070DSM](#) [LUC-018S070DSP](#) [LUC-024S105DSP](#) [599-2021-3-NME](#) [599-JJ-2021-03](#)
[00-5080-YWPP](#) [00-9089-RDPP](#) [00-9300-RDPP](#) [CRCW2010331JR02](#) [601-JJ-06](#) [601-SPB](#) [601YSY](#) [602-JJ-03](#) [602SPB](#) [603-JJ-07-FP](#) [603-](#)
[JJY-04](#) [M15570-25](#) [CRTN1013](#) [CS16](#) [6-1579014-0](#) [CSB3](#) [6203](#) [62200-5709](#) [6240-1](#) [M43435](#) [TY 2](#) [SZ 3](#) [FIN B](#) [BLK](#) [M-5Z](#) [M6816](#) [M7298](#)
[M7456](#) [M7976](#) [660-29ABT1](#) [662508-1](#) [CVHD-950X-93.333](#) [CW104-01X](#) [671-GP-04-KT39-73207](#)