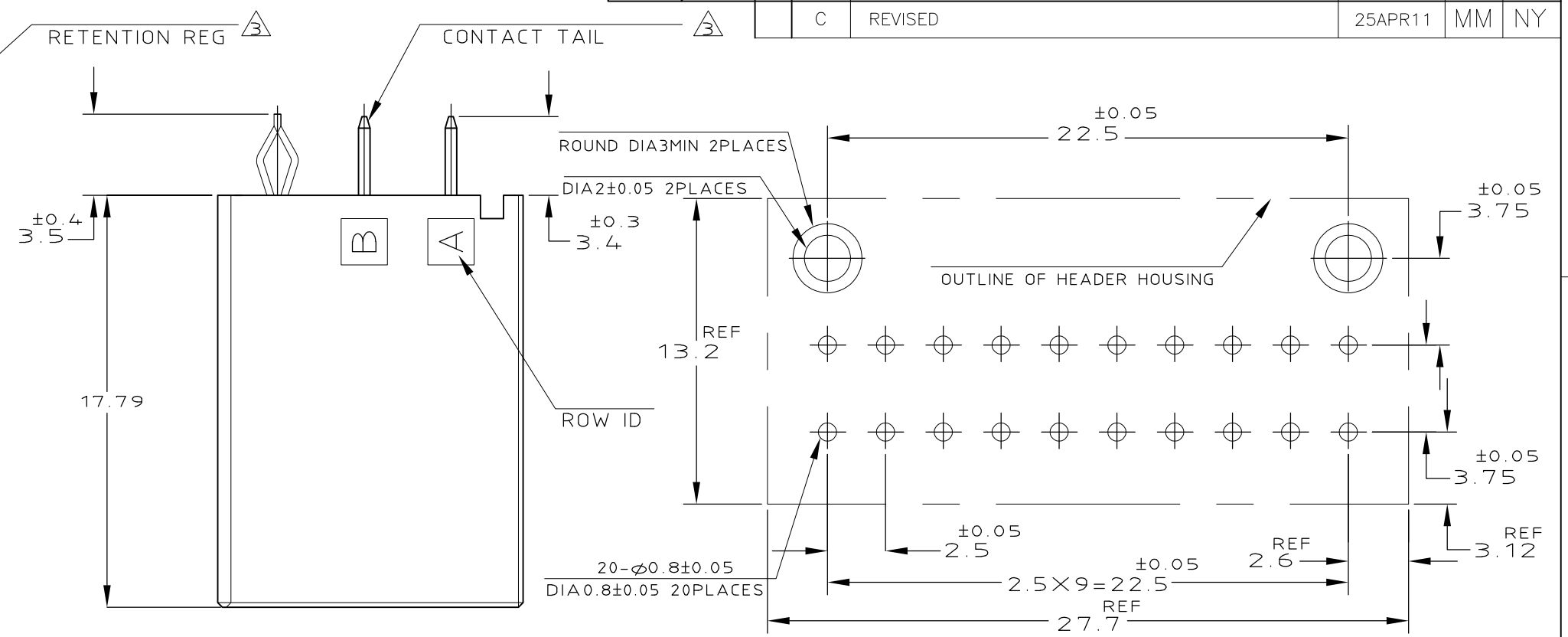
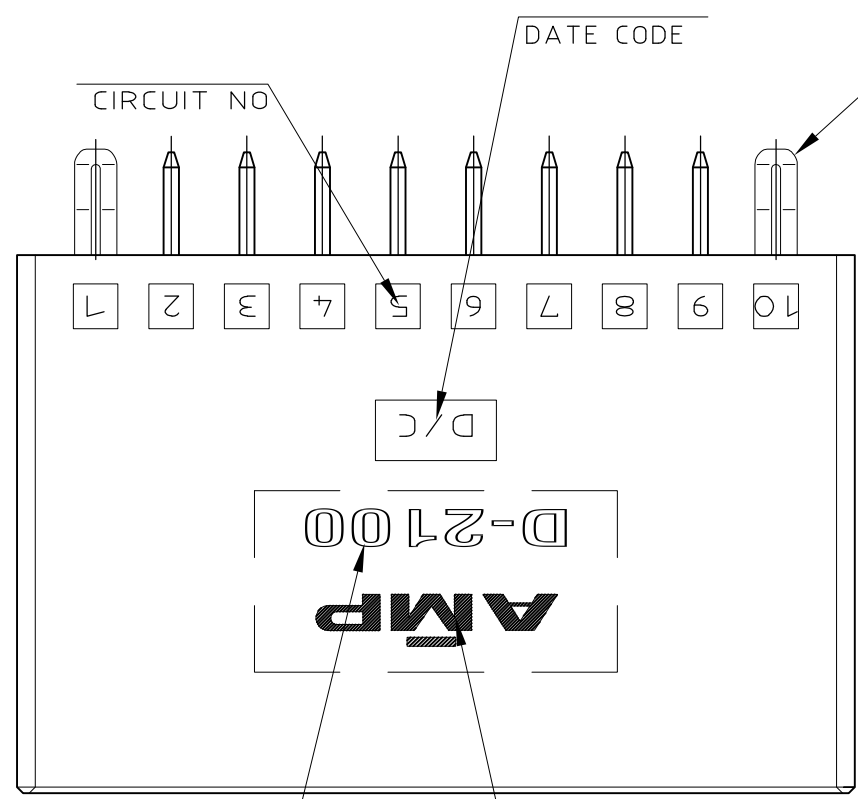
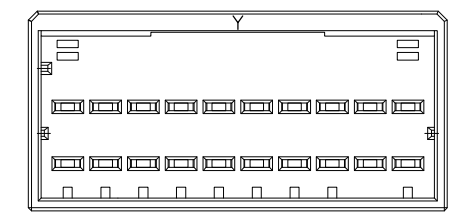


LOC	DIST	REVISIONS					
J		P	LTR	DESCRIPTION	DATE	DWN	APVD
			C	REVISED	25APR11	MM	NY



RECOMENDED PC BOARD HOLE PATTERN (TOL: ±0.05)
 PC BOARD THICKNESS: 1.6 ± 0.3
 (CONNECTOR MOUNT SIDE)

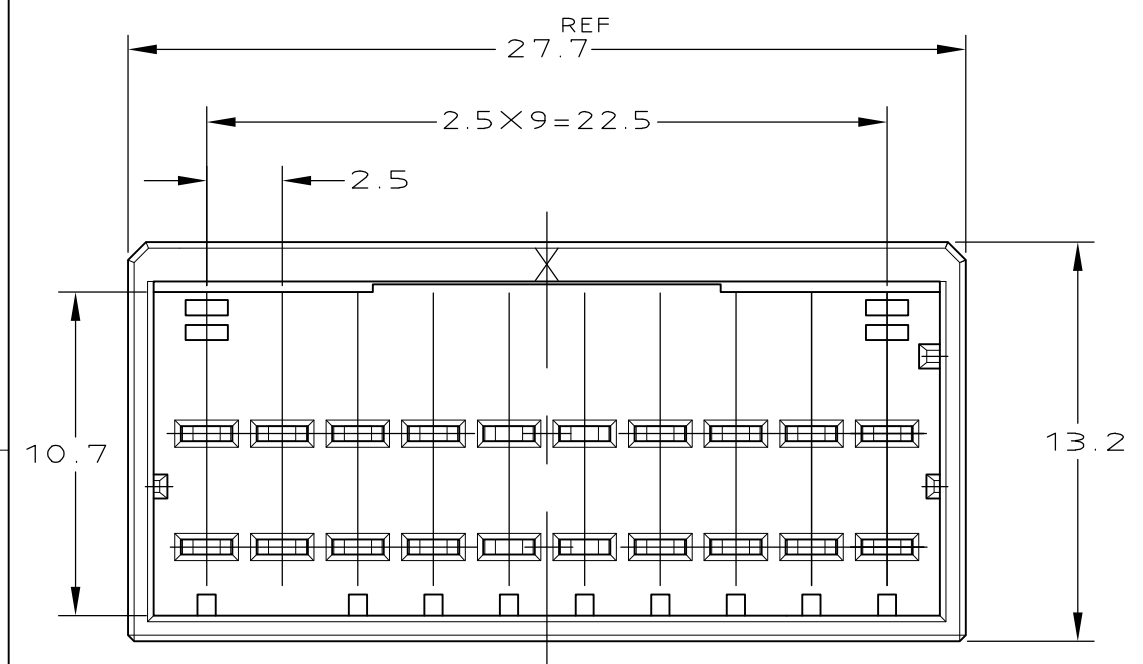


1318127-2
 9-1318127-2
 (KEYING Y)
 SCALE: 2-1

NOTES

- MATERIAL: HOUSING: GLASS FILED THERMO PLASTIC, POLYESTER (94V-0), COLOR: 1318127-1/-2 : BLACK, 9-1318127-2 : NATURAL
 TAB CONTACT: COPPER ALLOY
 RETENTION LEG: BRASS
- FINISH (CONTACT AREA): 0.38 μm MIN GOLD PLATING OVER Ni PLATING
- FINISH (RETENTION LEG): TIN PLATED (CONTACT TAIL) OVER NICKEL

Y	NATURAL	9-1318127-2
Y	BLACK	1318127-2
X	BLACK	1318127-1
KEY	COLOR	PART NO



1318127-1
 (KEYING X)

THIS DRAWING IS A CONTROLLED DOCUMENT.		DWN K.IKEDA 07DEC98	TE Connectivity	
DIMENSIONS: mm		CHK N.MATSUBARA 07DEC98		
TOLERANCES UNLESS OTHERWISE SPECIFIED:		APVD I.HASEGAWA 07DEC98	NAME DOUBLE ROW HEADER ASS'Y 20P ("V" TYPE) <DYNAMIC D-2100D>	
0 PLC ± -		PRODUCT SPEC 108-5619	SIZE	
1 PLC ± 0.3		APPLICATION SPEC 114-5218	CAGE CODE	DRAWING NO
2 PLC ± 0.35		WEIGHT	A3	00779
3 PLC ± 0.4		CUSTOMER DRAWING		
4 PLC ± -		SCALE 1:1		
ANGLES ± 3'		SHEET 1 OF 1		
FINISH SEE NOTES		REV C		

X-ON Electronics

Largest Supplier of Electrical and Electronic Components

Click to view similar products for [Headers & Wire Housings](#) category:

Click to view products by [TE Connectivity](#) manufacturer:

Other Similar products are found below :

[95000-104TRLF](#) [10135584-644402LF](#) [DF62W-EP2022PCA](#) [95000-106TRLF](#) [DF62W-2022SCA](#) [DF62W-EP2022PC](#) [2203348](#) [DF62W-2022SC](#) [1084018](#) [1029039](#) [1084017](#) [802-10-012-10-002000](#) [1112640](#) [1112639](#) [000-34000](#) [0009482033](#) [0009507031](#) [57102-S06-03LF](#) [57202-S52-04LF](#) [PCN6-15S-2.5E](#) [0039019024](#) [58102-G61-06LF](#) [582553-1](#) [0009508121](#) [0050291907](#) [018731A](#) [LY20-4P-DT1-P1E-BR](#) [02.125.8002.8](#) [60101931](#) [60598-1 \(Cut Strip\)](#) [M1625-3R/100](#) [61062-3](#) [61082-181009](#) [636-1427](#) [638009-1](#) [641938-9](#) [641991-4](#) [644168-1](#) [647662-1](#) [65039-019ELF](#) [65817-002LF](#) [65817-015LF](#) [65863-015LF](#) [66207-023LF](#) [67016-026LF](#) [67046-001LF](#) [67095-007LF](#) [68002-116](#) [68016-236H](#) [68648-049](#)