



Application Tooling > Connector Seating Machines



Tooling Type: **Seating**

### Features

#### Other

Tooling Type	Seating
--------------	---------

### Product Compliance

[For compliance documentation, visit the product page on TE.com>](#)

EU RoHS Directive 2011/65/EU	Compliant
EU ELV Directive 2000/53/EC	Out of Scope
China RoHS 2 Directive MIIT Order No 32, 2016	No Restricted Materials Above Threshold
EU REACH Regulation (EC) No. 1907/2006	Current ECHA Candidate List: JAN 2021 (211) Candidate List Declared Against: JAN 2021 (211) Does not contain REACH SVHC
Halogen Content	Low Halogen - Br, Cl, F, I < 900 ppm per homogenous material. Also BFR/CFR/PVC Free
Solder Process Capability	Not applicable for solder process capability

#### Product Compliance Disclaimer

This information is provided based on reasonable inquiry of our suppliers and represents our current actual knowledge based on the information they provided. This information is subject to change. The part numbers that TE has identified as EU RoHS compliant have a maximum concentration of 0.1% by weight in homogenous materials for lead, hexavalent chromium, mercury, PBB, PBDE, DBP, BBP, DEHP, DIBP, and 0.01% for cadmium, or qualify for an exemption to these limits as defined in the Annexes of Directive 2011/65/EU (RoHS2). Finished electrical and electronic equipment products will be CE marked as required by Directive 2011/65/EU. Components may not be CE marked. Additionally, the part

numbers that TE has identified as EU ELV compliant have a maximum concentration of 0.1% by weight in homogenous materials for lead, hexavalent chromium, and mercury, and 0.01% for cadmium, or qualify for an exemption to these limits as defined in the Annexes of Directive 2000/53/EC (ELV). Regarding the REACH Regulation, the information TE provides on SVHC in articles for this part number is based on the latest European Chemicals Agency (ECHA) 'Guidance on requirements for substances in articles' posted at this URL: <https://echa.europa.eu/guidance-documents/guidance-on-reach>

## Compatible Parts



TE Part # 1469081-1  
HMZD 3PR, RECEPTACLE ASSEMBLY



TE Part # CAT-CAP-6T  
CONNECTOR PRESS FIT MACHINE



TE Part # CAT-CAP-6T  
CONNECTOR PRESS FIT MACHINE



TE Part # CAT-CBP-5T  
CBP-5T MKII Benchtop Press - Servo Electric



TE Part # CAT-CMP-10TMKII  
CONNECTOR PRESS FIT MACHINE



TE Part # CAT-CMP-5TMKII  
CONNECTOR PRESS FIT MACHINE

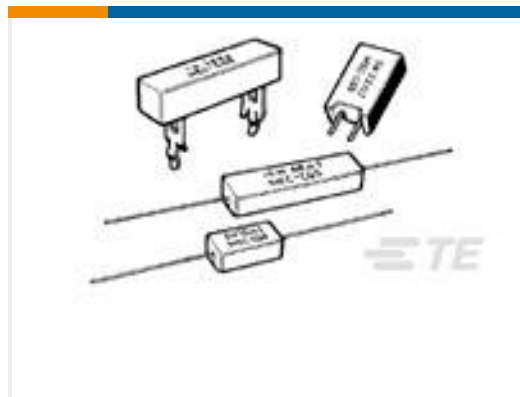


TE Part # CAT-CSP-5T  
CSP-5T MKII Shuttle Electric Press Machine

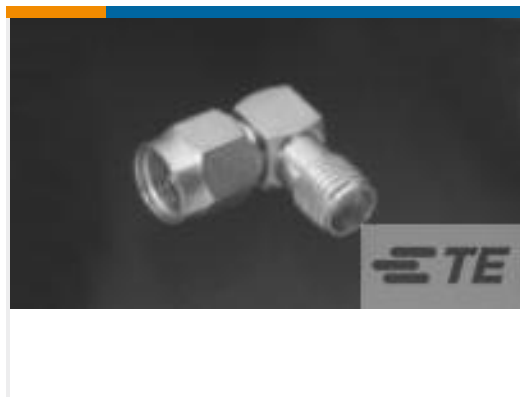
## Customers Also Bought



TE Part #1-6609031-2  
SER7M=F7188 S0



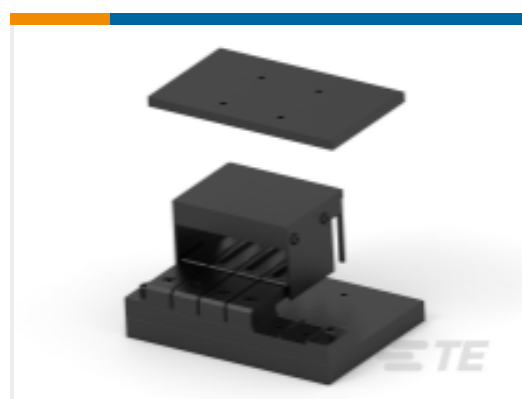
TE Part #1-1623781-0  
SQM2 10K 5% (METAL FILM)



TE Part #1055064-1  
2088 0000 00



TE Part #YDTS20F13-35HNV001  
RECP ASSY



TE Part #1-2215056-4  
ASSY, EXTRACT TL, QSFP28 1X4



TE Part #2-2170747-1  
CAGE ASSY, 1X4, QSFP28, SPRING, HS, LP



TE Part #1-1879337-3  
CPF 0603 3K32 1% 50PPM 1K RL



TE Part #1-1618002-6  
EV200H2ANA=RELAY, SPST-NO W /AUX



## Documents

### Datasheets & Catalog Pages

[TE Press-Fit Machines](#)

English

---

### Instruction Sheets

[CONNECTOR SEATING MACHINES DOCUMENTATION REQUEST](#)

English

## X-ON Electronics

Largest Supplier of Electrical and Electronic Components

*Click to view similar products for [Hand Tools](#) category:*

*Click to view products by [TE Connectivity](#) manufacturer:*

Other Similar products are found below :

[58284-1](#) [662908-1](#) [68764-0001](#) [690619-6](#) [7-354778-7](#) [768531-1](#) [821903-5](#) [822253-1](#) [854183-1](#) [854358-1](#) [992258-1](#) [1-21046-3](#) [1-22278-0](#)  
[1-22278-2](#) [1-24954-2](#) [125529-5](#) [126513-1](#) [1320846-1](#) [1338618-1](#) [1338968-2](#) [1-354779-0](#) [1-354779-2](#) [1-354779-4](#) [1424443-1](#) [1424289-1](#)  
[1424444-1](#) [MS24256A16](#) [1-525442-0](#) [1532195-2](#) [1538773-2](#) [1-59681-8](#) [1-59907-5](#) [1-692134-3](#) [1725760-1](#) [HT-920A-124-HTELE-RPL-KIT](#)  
[1976923-1](#) [1976969-1](#) [2063794-1](#) [2063795-1](#) [2-21002-1](#) [2-21002-3](#) [2-21002-4](#) [2-21002-7](#) [2-21002-9](#) [2-21004-0](#) [229399-2](#) [229707-1](#)  
[911737-2](#) [2598-5027-54](#) [91348-2](#)