

THIS DRAWING IS A CONTROLLED DOCUMENT. DRAW NO 1583003

TOOL NUMBER	WIRE SIZE mm ² [AWG]	INSULATION DIAMETER mm [in.]	INSUL. ADJ.	FLIP LOCATOR	STRIP LENGTH mm [in.]	CRIMP HEIGHT mm [in.]	CONTACT PART NUMBERS Δ		CONTACT DESCRIPTION	APPLIC. SPECIF.
							LOOSE PIECE	STRIP FORM		
91516-1 91516-3	0.05 - 0.15 [30-26]	1.22 MAX [.048 MAX]	YES	NO	3.96 ± 0.38 [.156 ± .015]	0.686 ± 0.051 [.027 ± .0020]	86015-[] Δ 87045-[]	85967-[] Δ 86491-[]	AMPMODU MOD IV Rec. Contacts	114-25003
	0.2 - 0.6 [24-20]	1.75 MAX [.069 MAX]			4.34 ± 0.38 [.171 ± .015]	0.775 ± 0.051 [.0305 ± .0020]	86016-[] 87309-[]	85969-[] 87309-[]		
91517-1 91517-3	0.12 - 0.24 [26-24]	1.02-1.52 [.040-.060]	YES	YES	3.56 ± 0.38 [.140 ± .015]	0.76 ± 0.05 [.030 ± .002]	87667-[] 102548-[] 87756-[] 103171-[]	87666-[] 102095-[] 166678-[]	AMPMODU MOD IV AND V CONTACTS	114-25016 114-25003
	0.32 - 0.38 [22]					0.86 ± 0.05 [.034 ± .002]	102107-[] 166679-[] 102128-[]			
91518-1 91518-3	0.03 - 0.09 [32-28]	0.64-1.52 [.025-.060]	YES	YES	3.18-3.96 [.125-.156]	0.58 ± 0.05 [.023 ± .002]	104481-6 104481-8 104481-7	104481-1 104481-3 104481-2 104481-4	AMPMODU Short Point Contacts	114-25038
	0.12 - 0.38 [26-22]	0.64-1.52 [.025-.060]			3.18-3.96 [.125-.156]	0.79 ± 0.05 [.031 ± .002]	104480-7 104480-9 104480-8	104480-1 104480-3 104480-2 104480-4		
91533-1 91533-3	0.12 - 0.35 [26-22]	0.97-1.57 [.038-.062]	YES	YES	3.81 ± 0.13 [.150 ± .005]	0.76 ± 0.05 [.030 ± .002]	87165-[]	87124-[]	LOCKING CLIP Contacts	114-25006
91541-1 91541-3	0.03-0.06 [32-30]	0.51-1.02 [.020-.040]	YES	NO	2.77-4.37 [.109-.172]	0.56 ± 0.05 [.022 ± .002]	102098-[] 102316-[] 102917-[] 102918-[] 102920-[] 103455-[]		AMPMODU MOD IV AND V CONTACTS	114-25003
	0.08-0.10 [28-27]					0.56 ± 0.05 [.022 ± .002]				
91551-1 91551-3	0.20-0.56 [24-20]	0.64-1.52 [.025-.060]	YES	NO	3.18-3.96 [.125-.156]	0.74 ± 0.05 [.029 ± .002]	104479-5 104479-6 104479-7	104479-2 104479-3 104479-4	AMPMODU Short Point Contacts	114-25038
91601-1 91601-3	0.20 [24]	0.64-1.52 [.025-.060]	YES	NO	3.18-3.96 [.125-.156]	0.74 ± 0.05 [.029 ± .002]	104479-5 104479-6 104479-7	104479-2 104479-3 104479-4	AMPMODU Short Point Contacts	114-25038
	0.30-0.60 [22-20]									
2217081-1	0.03 - 0.09 [32-28]	1.02 MAX (.040 MAX)	YES	YES	4.37-2.77 [.172-.109]	0.56 ± 0.05 [.022 ± .002]	166310-2	167021-2	AMPMODU MOD IV AND V CONTACTS	114-25003
	0.20 - 0.56 [24-20]	SEE 114-25003			4.78-3.58 [.188-.141]	0.78 ± 0.05 [.030 ± .002]				
	0.12 - 0.14 [26]	1.22 MAX (.048 MAX)			4.37-2.77 [.172-.109]	0.69 ± 0.05 [.027 ± .002]				
2844540-1	0.05 - 0.15 [30-26]	1.22 MAX [.048 MAX]	YES	YES	3.96 ± 0.38 [.156 ± .015]	0.686 ± 0.051 [.027 ± .0020]	86015-[] Δ 87045-[]	85967-[] Δ 86491-[]	AMPMODU MOD IV Rec. Contacts	114-25003
	0.2 - 0.6 [24-20]	1.75 MAX [.069 MAX]			4.34 ± 0.38 [.171 ± .015]	0.775 ± 0.051 [.0305 ± .0020]	86016-[] 87309-[]	85969-[] 87309-[]		

Δ LIST OF APPLIED CONTACT PART NUMBERS MAY NOT BE COMPLETE AND IS SUBJECT TO CHANGE. FOR CURRENT INFORMATION, CONTACT THE TOOLING ASSISTANCE CENTER: 1-800-722-1111.

2. AMP, AMPMODU, and CERTI-CRIMP are trademarks.

Δ -1 IS A CERTICRIMP II HAND TOOL ASSEMBLY.
-3 IS A CERTICRIMP II HEAD SUB-ASSEMBLY.

Δ PLACE WIRE IN THE BOTTOM OF THE WIRE BARREL FOR PROPER TERMINATIONS. SEE IS408-7497 FOR ADDITIONAL INFORMATION.

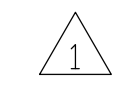
5. THE HAND TOOL INSTRUCTION SHEET, ALSO KNOWN AS AN "IS", FOR MOST CERTI-CRIMP II TOOLS USE IS 408-8547. IF THE TOOL HAS A FLIP LOCATOR USE IS 408-10414.

CERTI-CRIMP II DATA SHEET

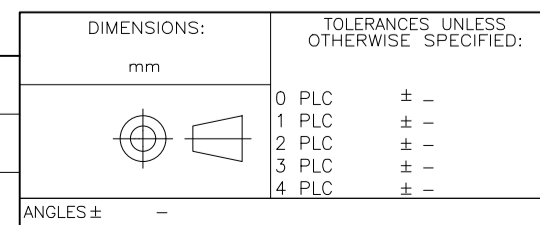
DIMENSIONS: mm		TOLERANCES UNLESS OTHERWISE SPECIFIED:		DRAWN: M. YOUNGER 21FEB2012		MATERIAL: -		HEAT TREAT: -	
0 PLC ± -		1 PLC ± -		CHK: B.A.WOLFE 22FEB2012		APVD: B.A.WOLFE 22FEB2012		TE Connectivity	
2 PLC ± -		3 PLC ± -		NAME: B.A. WOLFE		SCALE: -		SIZE: A1	
4 PLC ± -		ANGLES: -		SURFACE TEXTURE: $\sqrt{\text{ }}$		DRAWING NO: 1583003		SHEET 1 of 2	
P LTR		REVISION RECORD		DATE: 08/2020		DWN: AW		SS	

THIS DRAWING IS A CONTROLLED DOCUMENT.

THIS INFORMATION IS CONFIDENTIAL AND PROPRIETARY TO TFCO AND ELECTRONICS CORPORATION AND ITS WORLDWIDE SUBSIDIARIES. IT IS TO BE KEPT CONFIDENTIAL AND NOT TO BE DISCLOSED TO ANY OTHER PERSONNEL WITHOUT AUTHORIZATION FROM TFCO.

TOOL NUMBER	WIRE SIZE mm ² [AWG]	INSULATION DIAMETER mm [in.]	INSUL. ADJ.	FLIP LOCATOR	STRIP LENGTH mm [in.]	CRIMP HEIGHT mm [in.]	CONTACT PART NUMBERS 		CONTACT DESCRIPTION	APPLIC. SPECIF.
							LOOSE PIECE	STRIP FORM		
2326267-1	0.08 [28]	1.0 MAX [.039 MAX]	YES	YES	2.75 ± 0.25 [.025 ± .010]	0.64 ± 0.05 [.027 ± .002]	2-2316113-3 3-2316113-4 4-2316113-5 5-2316113-6	AMPMODU 2mm RECEPTACLE, CABLE TO BOARD	114-32173	
	0.13 [26]					0.69 ± 0.05 [.027 ± .002]				
	0.20 [24]					0.74 ± 0.05 [.029 ± .002]				
2326270-1	0.05 [30]	0.5 - 1.0 MAX [.020 - .039 MAX]	YES	YES	2.75 ± 0.25 [.025 ± .010]	0.53 ± 0.05 [.021 ± .002]	2-2316114-3 3-2316114-4 4-2316114-5 5-2316114-6	AMPMODU 2mm RECEPTACLE, CABLE TO BOARD	114-32173	
	0.08 [28]					0.55 ± 0.05 [.022 ± .002]				

DIMENSIONS: mm		TOLERANCES UNLESS OTHERWISE SPECIFIED:		DIN 21FEB2012		MATERIAL -		HEAT TREAT -	
0 PLC ± -		1 PLC ± -		DWN M. YOUNGER		22FEB2012		-	
2 PLC ± -		3 PLC ± -		CHK B.A. WOLFE		22FEB2012		-	
4 PLC ± -		5 PLC ± -		APVD B.A. WOLFE		22FEB2012		-	
6 PLC ± -		7 PLC ± -		NAME B.A. WOLFE		22FEB2012		-	
8 PLC ± -		9 PLC ± -		CERTI-CRIMP II TOOL DATA SHEET		AMPMODU CONTACT FAMILY		-	
10 PLC ± -		11 PLC ± -		SCALE -		SIZE A1		DRAWING NO 1583003	
12 PLC ± -		13 PLC ± -		P LTR		REVISION RECORD		DATE	
14 PLC ± -		15 PLC ± -		DWN		APVD		SHEET 2 of 2	
16 PLC ± -		17 PLC ± -		DATE		DWN		REV B7	
18 PLC ± -		19 PLC ± -		DATE		APVD		REV	
20 PLC ± -		21 PLC ± -		DATE		APVD		REV	



ANGLES ± -
SURFACE TEXTURE -√-

X-ON Electronics

Largest Supplier of Electrical and Electronic Components

Click to view similar products for [Crimpers / Crimping Tools](#) category:

Click to view products by [TE Connectivity](#) manufacturer:

Other Similar products are found below :

[010-0096](#) [M225201-06](#) [M225202-37](#) [6-1579015-5](#) [622-6441LF](#) [M322](#) [6-304052-1](#) [63456-0054](#) [63484-3701](#) [63800-8355](#) [63819-1875](#)
[63819-2875](#) [63819-4475](#) [63823-3475](#) [63827-5375](#) [64001-0975](#) [64001-4175](#) [64005-0175](#) [662903-2](#) [690602-6](#) [7-1579001-9](#) [7-23471-1](#)
[762637-1](#) [808714-1](#) [811242-5](#) [999-50-020083](#) [1-21002-3](#) [1-21002-7](#) [12085270](#) [1-21002-6](#) [1-21113-6](#) [1-22548-4](#) [125442-1](#)
[DCE.91.073.BVC](#) [DCE.91.090.3MVM](#) [DCE.91.130.5MVU](#) [DCE.91.202.BVCM](#) [1338300-1](#) [1-354003-0](#) [1338301-1](#) [DF62/RE-MD](#) [142321](#)
[1456088-1](#) [1490794-1](#) [1-45804-6](#) [1490357-2](#) [1490357-3](#) [AX100749](#) [1-59619-7](#) [1596970-1](#)