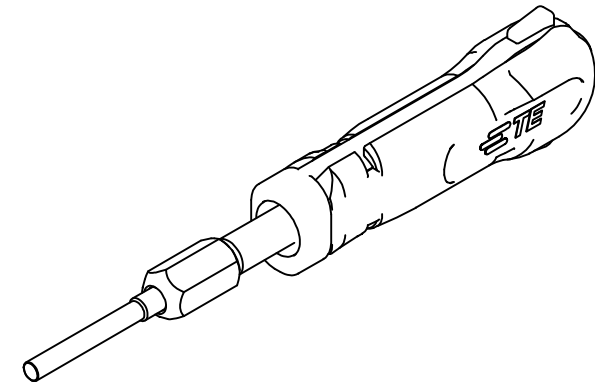
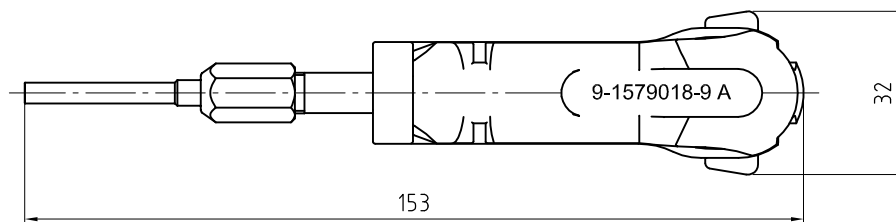
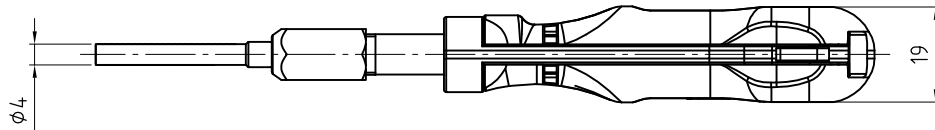
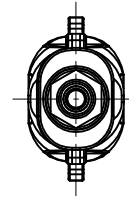
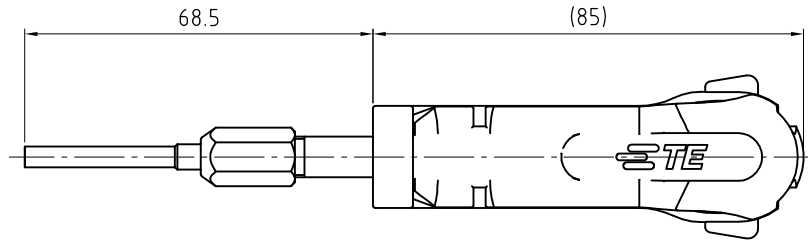


THIS DRAWING IS UNPUBLISHED.

RELEASED FOR PUBLICATION

© COPYRIGHT - BY TYCO ELECTRONICS CORPORATION. ALL INTERNATIONAL RIGHTS RESERVED.

LDC		DIST		REVISIONS			
P	LTR	DESCRIPTION		DATE	DWN	APVD	
	A	INITIAL REVISION		03JUL12	KS	GS	



APPLICATION RANG / Anwendungsbereich

CONTACT

Slim line: 1987281-1; 1987280-1
Standard: 1987281-3; 1987280-4

HOUSING

Slim line: 1-1987559-1; 1-1987559-2; 1-1987558-1; 1-1987558-2
Standard: 1394462-3; 1394462-4; 1394461-3; 1394461-4

DIMENSIONS:		TOLERANCES UNLESS OTHERWISE SPECIFIED:		DWN		CHK		APVD		NAME	
mm				K. Simpson		G. Stegmayer		G. Stegmayer		EXTRACTION TOOL	
		0 PLC	± -	03JUL12		03JUL12		03JUL12		ENTRIEGELUNGSWERKZEUG	
		1 PLC	± -								
		2 PLC	± -								
		3 PLC	± -								
		4 PLC	± -								
		ANGLES	± -								
MATERIAL		FINISH		WEIGHT		kg		SIZE		RESTRICTED TO	
								A3		-	
								CAGE CODE		DRAWING NO	
								00779		9-1579018-9	
								SCALE		SHEET	
								1:1		1 OF 1	
										REV	
										A	

X-ON Electronics

Largest Supplier of Electrical and Electronic Components

Click to view similar products for [Extraction, Removal & Insertion Tools](#) category:

Click to view products by [TE Connectivity](#) manufacturer:

Other Similar products are found below :

[M8196914-08](#) [768211-2](#) [809-131](#) [844751-2](#) [8-59558-2](#) [91018-1](#) [12014013](#) [12093647](#) [1-21048-0](#) [R282867020](#) [12093078](#) [1-21048-6](#)
[12121897](#) [DCF.91.405.5LT](#) [1322](#) [15314260](#) [15350698](#) [15350707](#) [15430130](#) [1579018-4](#) [1643916-1](#) [1-679532-0](#) [1976593-3](#) [OUTEXT-0321](#)
[2-1579008-3](#) [2-1579008-4](#) [229694-7](#) [231106-1](#) [241469](#) [91040-3](#) [91040-7](#) [965004-000](#) [965069-000](#) [1738219-1](#) [ET-JL05-16](#) [FG 0300 146](#)
[3000](#) [FIT-6](#) [210S048](#) [2-1579007-9](#) [231879-1](#) [312138-3](#) [RJ11FODE](#) [356-162](#) [M8196914-10](#) [4-1579018-0](#) [430395-001](#) [483249-1](#) [5-](#)
[1579007-2](#) [5-1579007-9](#) [BPR10](#)