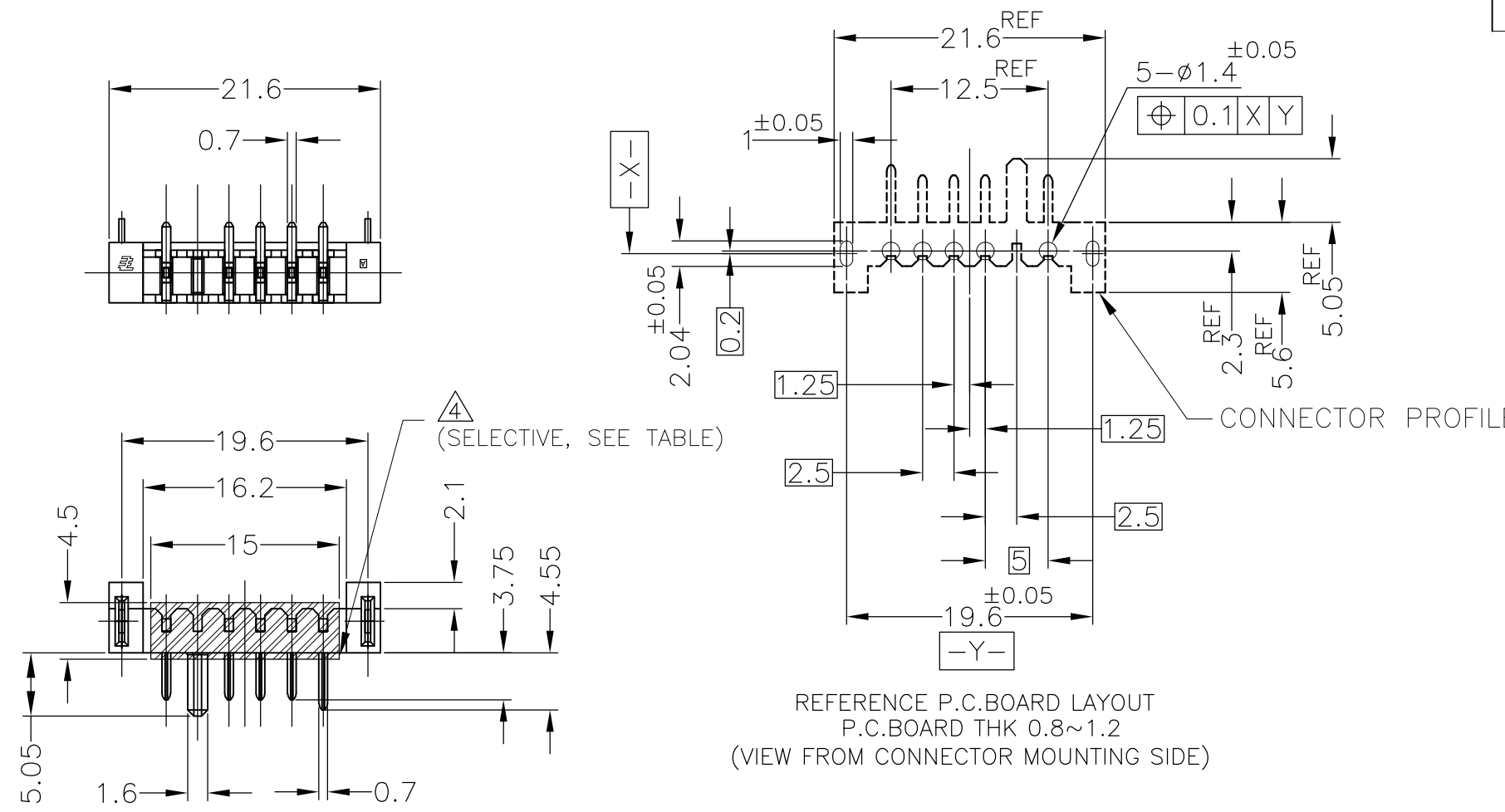
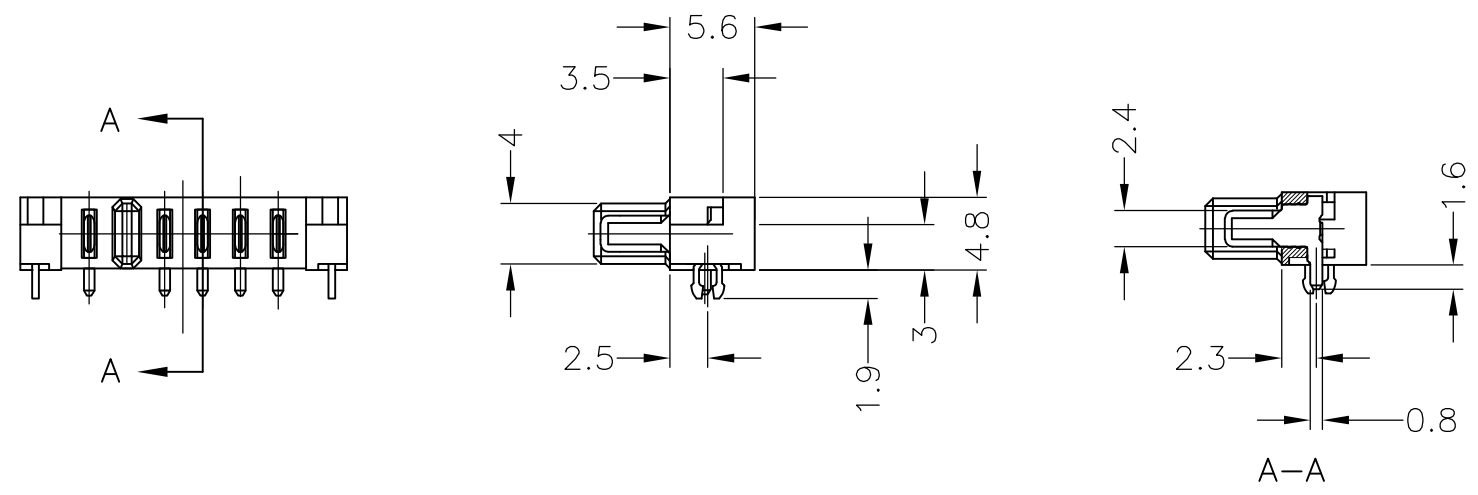


THIS DRAWING IS UNPUBLISHED. RELEASED FOR PUBLICATION JUL ,2002.
 © COPYRIGHT 2002 BY TYCO ELECTRONICS CORPORATION. ALL RIGHTS RESERVED.

LOC	DIST	REVISIONS			
P	LTR	DESCRIPTION	DATE	DWN	APVD
ES	/	E	REVISED PER ECR-13-000366	10JAN2013	E.L S.Y



- ① MATERIAL HOUSING : THERMOPLASTIC RESIN, UL94V-0
COLOR ; BLACK
CONTACT : COPPER ALLOY
RETENTION LEG : COPPER ALLOY
- ② FINISH CONTACT : Ni ALL OVER UNDER PL.
GOLD PL. AT CONTACT AREA
TIN-LEAD PL. AT LEAD AREA
RETENTION LEG : Ni ALL OVER UNDER PL.
TIN-LEAD PL.
- ③ FINISH CONTACT : Ni ALL OVER UNDER PL.
GOLD PL. AT CONTACT AREA
GOLD FLASH PL. AT LEAD AREA
RETENTION LEG : Ni ALL OVER UNDER PL.
TIN PL.
- ④ POLYIMIDE FILM: JUST FOR CHIP MOUNTER WORK



W/ POLYIMIDE FILM	③	9-1612503-2
W/O POLYIMIDE FILM	③	9-1612503-1
W/O POLYIMIDE FILM	②	1612503-1
OBSOLETE		
REMARK	FINISH	PART NO.

THIS DRAWING IS A CONTROLLED DOCUMENT.		DWN T.KATANO 22JUL02	Tyco Electronics Corporation Shanghai PRC	
DIMENSIONS: mm		CHK K.IKEGAMI 22JUL02	NAME PLUG ASSEMBLY 2.5mm PITCH BATTERY CONNECTOR 5POS.	
TOLERANCES UNLESS OTHERWISE SPECIFIED: 0-PLC \pm 0.3 1-PLC \pm 0.3 2-PLC \pm 0.3 3-PLC \pm 0.3 4-PLC \pm 0.3 ANGLES \pm 3'		APVD K.KODAIRA 22JUL02	PRODUCT SPEC 108-5783	
MATERIAL ①		FINISH SEE TABLE	APPLICATION SPEC CUSTOMER DRAWING	RESTRICTED TO -
		WEIGHT	SIZE A3	CAGE CODE 00779
			DRAWING NO G-1612503	SCALE 4:1
			SHEET 1 OF 1	REV E

X-ON Electronics

Largest Supplier of Electrical and Electronic Components

Click to view similar products for [Power to the Board](#) category:

Click to view products by [TE Connectivity](#) manufacturer:

Other Similar products are found below :

[6450171-4](#) [6450552-7](#) [6600323-8](#) [6643429-1](#) [6646040-2](#) [6651939-1](#) [6766604-1](#) [120959-1](#) [1393557-2](#) [1393532-2](#) [1393532-3](#) [1393532-4](#)
[1393557-1](#) [1600812-5](#) [1-6450861-2](#) [1744132-7](#) [1761122-1](#) [1766250-1](#) [1892109-1](#) [2-6450860-5](#) [2-6450870-0](#) [1-6450161-4](#) [1-6450850-6](#) [1-6450869-6](#) [1645526-2](#) [1-6600130-0](#) [2005243-2](#) [377-0020-11130](#) [TE34-12-16P-F0](#) [5-6450830-6](#) [5646956-4](#) [377-0080-11131A](#) [4-6450830-9](#)
[4-6600333-3](#) [10125416-4050LF](#) [6600320-3](#) [3-6450860-5](#) [1888123-2](#) [6450166-1](#) [6643978-1](#) [6766605-1](#) [701-15-02109](#) [N11444](#) [6651938-1](#)
[6450810-7](#) [46437-1112](#) [1-1589677-8](#) [5646956-5](#) [6450813-2](#) [6450129-4](#)