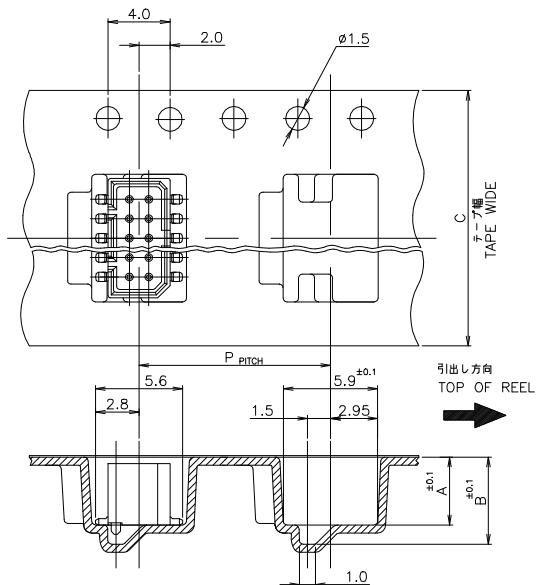
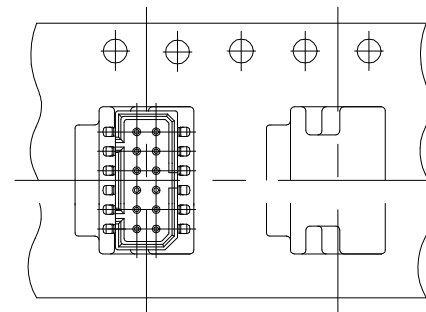


REVISIONS

P	LTR	DESCRIPTION	DATE	DWN	APVD
H1		REVISE AS PER ECR-19-018622	29NOV2019	AL	HL



6 Pos. (P/N: 3-176890-6)



12 Pos. (P/N: 7-176890-2)

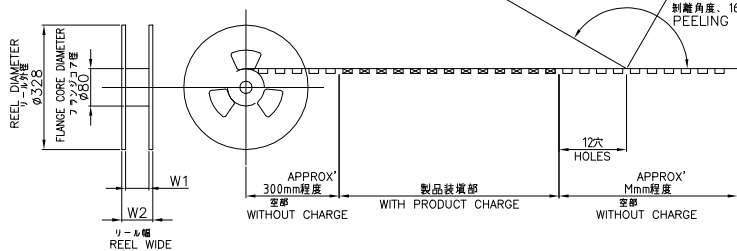
注記

1. 包装規格 : 107-5123-5

NOTE

1. PACKAGING SEPC:107-5123-5

EXCEPT 6 Pos. AND 12 Pos.



330	80	29	26	300	12	7.45	6.25	24	750	16	7-174821-6	7-176890-6
330	100	22.4	16.4	300	12	7.45	6.25	24	750	12	7-174821-2	7-176890-2
330	80	29	26	300	12	5.45	4.25	24	1000	24	5-174821-4	5-176890-4
330	80	29	26	300	12	5.45	4.25	24	1000	22	5-174821-2	5-176890-2
330	80	29	26	300	12	5.45	4.25	24	1000	20	5-174821-0	5-176890-0
330	80	29	26	300	12	5.45	4.25	24	1000	18	4-174821-8	4-176890-8
330	80	29	26	300	12	5.45	4.25	24	1000	16	4-174821-6	4-176890-6
330	100	22.4	16.4	300	12	5.45	4.25	16	1000	14	4-174821-4	4-176890-4
330	80	21	18	300	12	5.45	4.25	16	1000	12	4-174821-2	4-176890-2
330	80	21	18	300	12	5.45	4.25	16	1000	10	4-174821-0	4-176890-0
330	80	21	18	300	12	5.45	4.25	16	1000	6	3-174821-6	3-176890-6
330	80	29	26	300	12	6.95	5.75	24	750	16	1-174821-6	1-176890-6
D 2	D 1	W 2	W 1	M	P	B	A	C	QTY/ REEL	Pos	CONNECTOR P/N	TAPING P/N

WITHOUT POLYAMIDE TAPE

THIS DRAWING IS A CONTROLLED DOCUMENT.

DWN S.KANEKI 22JUN90
CHK J.TANIGAWA 22JUN90
APVD S.KUBOUCHI 22JUN90

TE Connectivity

NAME: 1.25 FP CONNECTOR (B-TO-B) ON TAPING (EMBOSS) DOUBLE ROW POST HDR ASS'Y SMT TYPE

PRODUCT SPEC: 108-5246

APPLICATION SPEC

SIZE: A3 CAGE CODE: 00779 C=176890

RESTRICTED TO: -

MATERIAL: FINISH: ANGLES: ±

WEIGHT: -

CUSTOMER DRAWING

SCALE: SHEET 1 OF 2 REV H1

THIS DRAWING IS UNPUBLISHED.

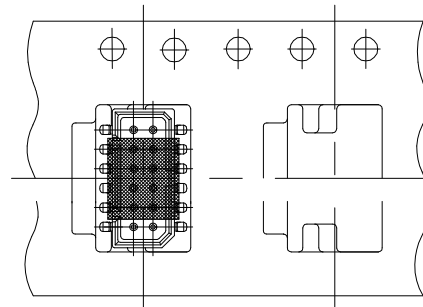
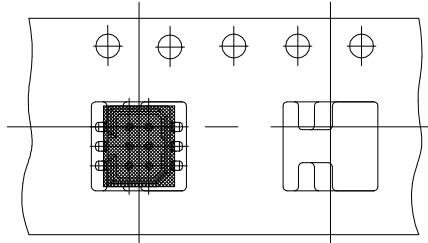
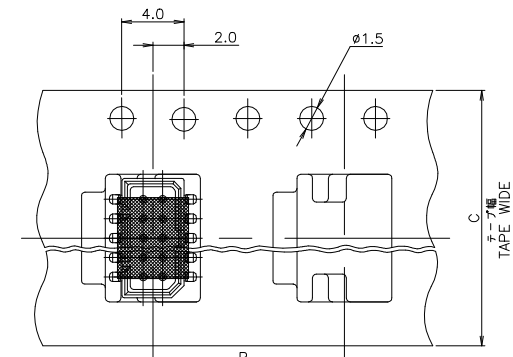
RELEASED FOR PUBLICATION

ALL RIGHTS RESERVED.

© COPYRIGHT By -

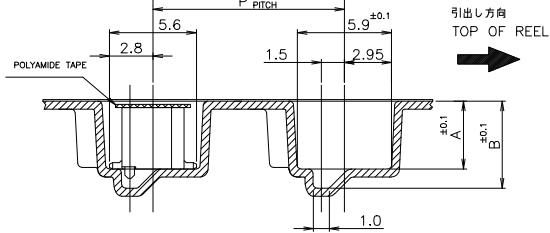
REVISIONS

P	LTR	DESCRIPTION	DATE	DWN	APVD
-	-	SEE SHEET 1	-	-	-

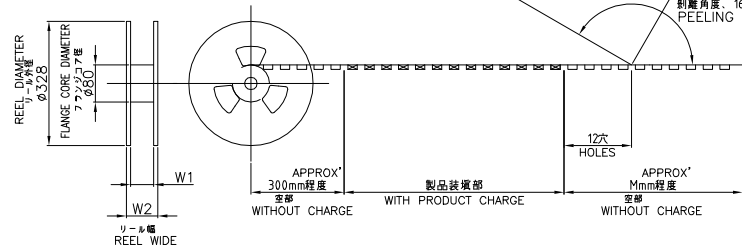


6 Pos. (P/N: 3-176890-6)

12 Pos. (P/N: 7-176890-2)



EXCEPT 6 Pos. AND 12 Pos.



WITH POLYAMIDE TAPE

330	100	30.4	24.4	300	12	6.95	5.75	24	700	14	1-174821-4	176890-4
330	80	29	26	300	12	7.45	6.25	24	750	16	7-174821-6	9-176890-6
330	100	22.4	16.4	300	12	7.45	6.25	24	700	12	7-174821-2	9-176890-2
330	80	29	26	300	12	5.45	4.25	24	1000	24	5-174821-4	8-176890-4
330	80	29	26	300	12	5.45	4.25	24	1000	22	5-174821-2	8-176890-2
330	80	29	26	300	12	5.45	4.25	24	1000	20	5-174821-0	8-176890-0
330	80	29	26	300	12	5.45	4.25	24	1000	18	4-174821-8	6-176890-8
330	80	29	26	300	12	5.45	4.25	24	1000	16	4-174821-6	6-176890-6
330	100	22.4	16.4	300	12	5.45	4.25	24	1000	14	4-174821-4	6-176890-4
330	80	21	18	300	12	5.45	4.25	16	1000	12	4-174821-2	6-176890-2
330	80	21	18	300	12	5.45	4.25	16	1000	10	4-174821-0	6-176890-0
330	80	21	18	300	12	5.45	4.25	16	1000	6	3-174821-6	2-176890-6
330	80	29	26	300	12	6.95	5.75	24	750	16	1-174821-6	176890-6
D2	D1	W2	W1	M	P	B	A	C	QTY/REEL	Pos	CONNECTOR P/N	TAPING P/N

THIS DRAWING IS A CONTROLLED DOCUMENT.

DWN S.KANEKI 22JUN90
CHK J.TANIGAWA 22JUN90
APVD S.KUBOUCHI 22JUN90
PRODUCT SPEC 108-5246
APPLICATION SPEC

TE Connectivity

NAME: 1.25 FP CONNECTOR (B-TO-B) ON TAPING (EMBOSS) DOUBLE ROW POST HDR ASS'Y SMT TYPE

SIZE: A3 CAGE CODE: 00779 C=176890 DRAWING NO: RESTRICTED TO: -

WEIGHT: CUSTOMER DRAWING SCALE: SHEET 2 of 2 REV H1

X-ON Electronics

Largest Supplier of Electrical and Electronic Components

Click to view similar products for [Headers & Wire Housings](#) category:

Click to view products by [TE Connectivity](#) manufacturer:

Other Similar products are found below :

[892-18-020-10-001101](#) [58102-G61-06LF](#) [582553-1](#) [0009485154](#) [009176003701906](#) [0050291907](#) [LY20-4P-DT1-P1E-BR](#) [02.125.8002.8](#)
[609-3404](#) [61062-3](#) [61082-181009](#) [622-3653LF](#) [63453-116](#) [636-1030](#) [636-1427](#) [636-3427](#) [636-4007](#) [641938-9](#) [641991-4](#) [644827-2](#) [65817-010LF](#) [65817-015LF](#) [65863-015LF](#) [66207-023LF](#) [67095-007LF](#) [67601157](#) [68645-018](#) [68648-049](#) [70.362.1628.0](#) [70-4210](#) [70-4226B](#) [70-4853B](#) [707-5020](#) [707-5028](#) [71.350.2428.0](#) [71918-208LF](#) [71961-016LF](#) [733-134](#) [733-162](#) [754199-000](#) [760-3052](#) [787-8014-00](#) [79531-3000](#)
[FCN-360C032-B](#) [FCN-367T-T012/H](#) [FCN-723D010/2](#) [80.063.4001.1](#) [800-90-001-10-001000](#) [800-90-010-10-002000](#) [801-43-002-10-013000](#)