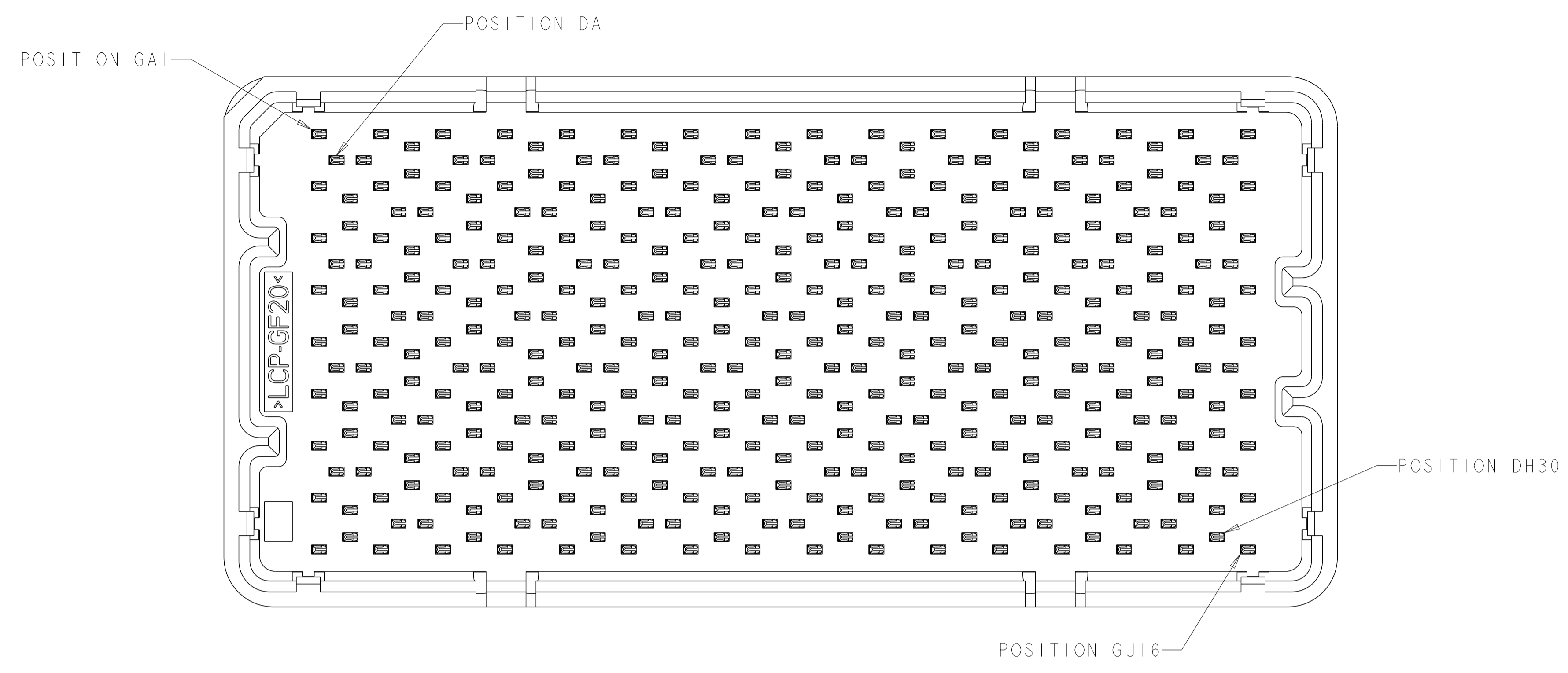
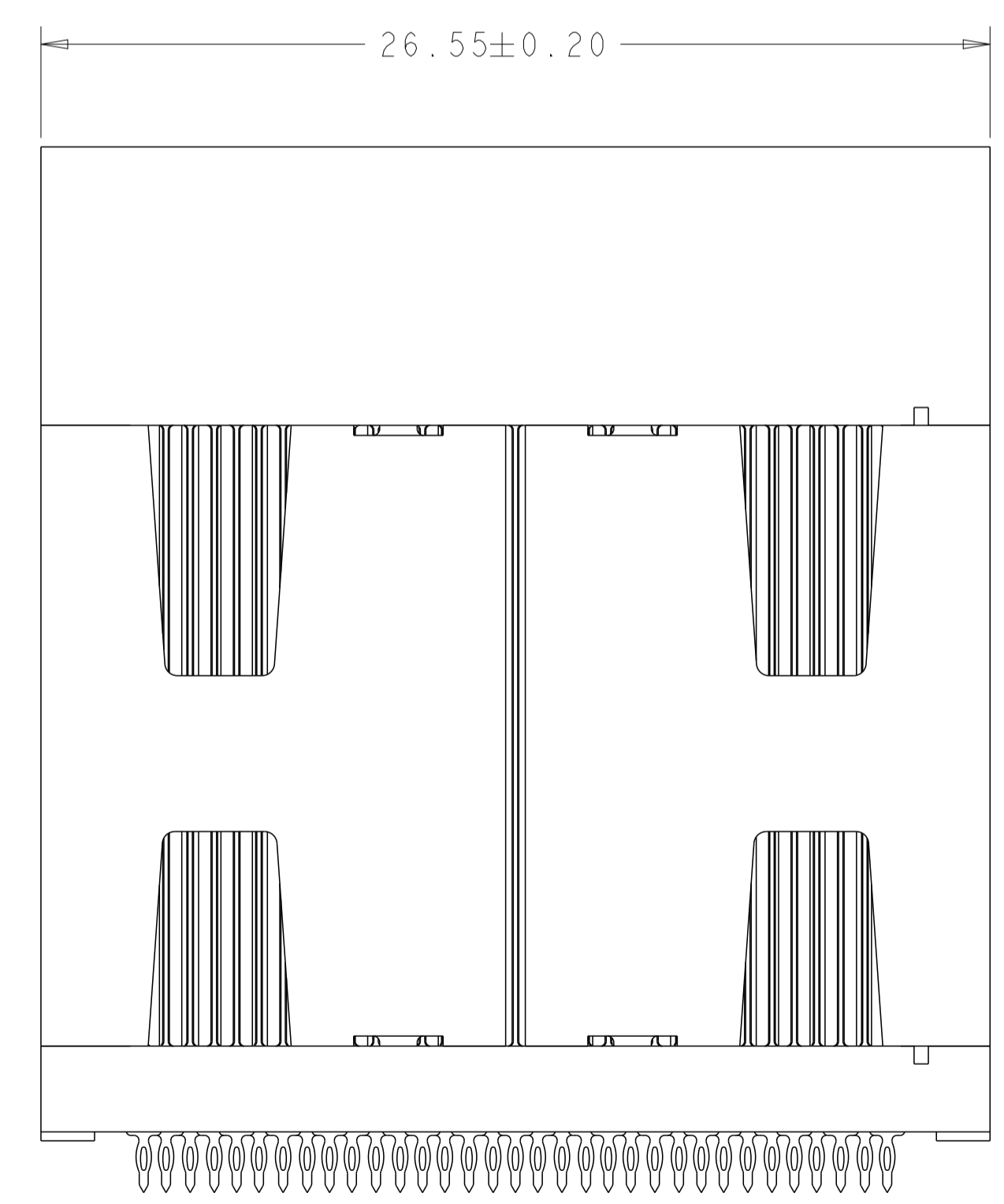
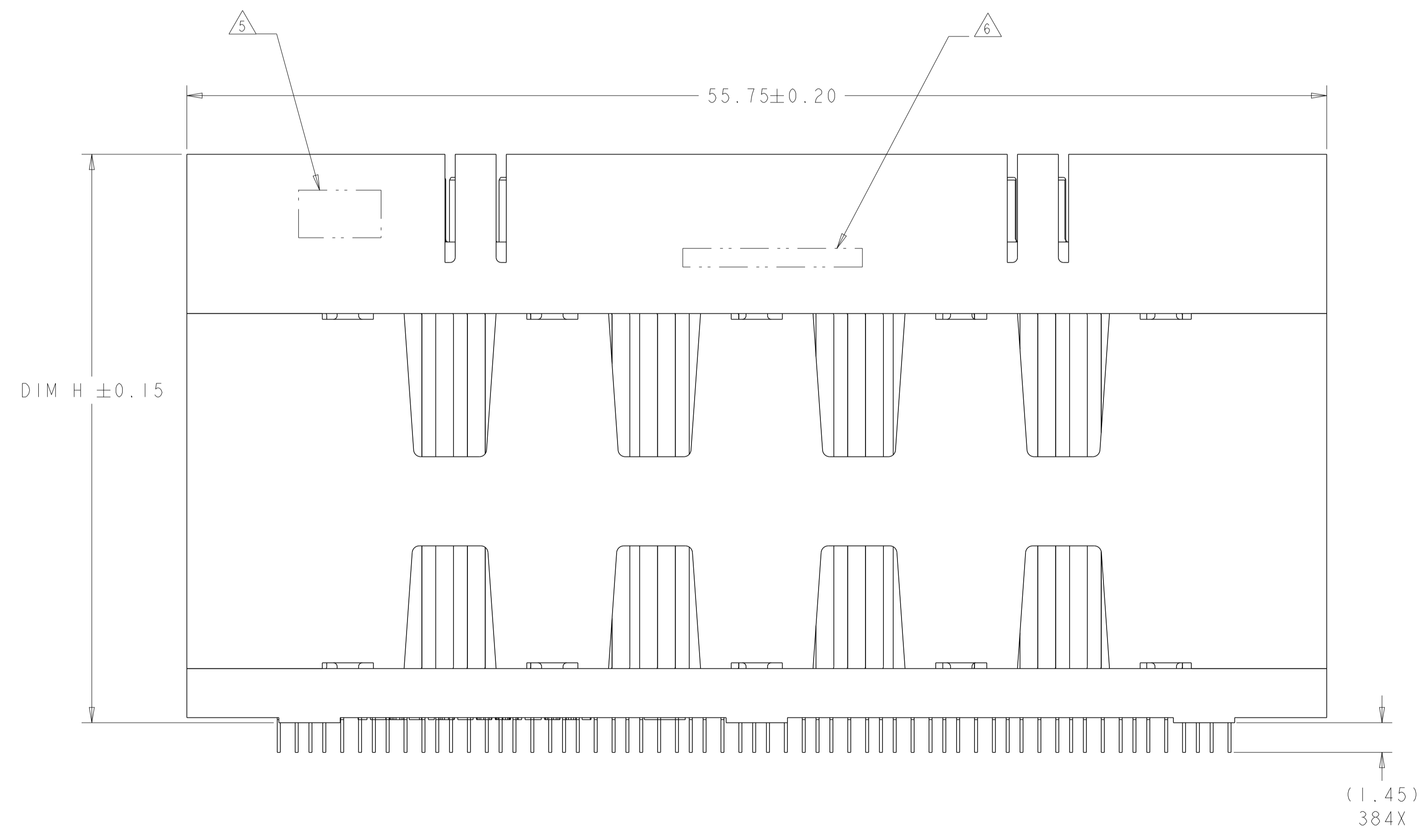


LOC	DIST	REVISIONS					
GP	00	P	LTN	DESCRIPTION	DATE	DWN	APVD
		A		REVISED PER ECO-12-018201	17OCT2012	KH	MH



- △ MATERIAL:
BASE HOUSING, UPPER HOUSING, ORGANIZER,
AND SPACER: THERMOPLASTIC, FLAMMABILITY
RATING UL94-V0
CONTACT: COPPER ALLOY
- 2. CONFORMS TO THE REQUIREMENTS OF TE PRODUCT
SPECIFICATION, 108-2375; BASED ON TELCORDIA
GR-1217-CORE FOR SYSTEM QUALITY LEVEL III,
APPLICATIONS IN CONTROLLED ENVIRONMENTS
(CENTRAL OFFICE).
SEE TE PRODUCT SPECIFICATION 108-2375 FOR
TEST SEQUENCES.
- △ ROWS GA THRU GJ (SHOWN DARKENED) ARE TYPICALLY
USED AS GROUNDS.
- △ SPECIFIED POSITIONAL TOLERANCE DEFINES HOLE TO
HOLE LOCATION WITHIN HOLE PATTERN. POSITIONAL
TOLERANCE OF HOLE PATTERN TO FIDUCIAL MARKS
OR PCB DATUMS SHALL BE DEFINED BY CUSTOMER.
- △ AREA RESERVED FOR TE CONNECTIVITY LOGO.
- △ AREA RESERVED FOR PART NUMBER (X-XXXXXXX-X)
AND DATE CODE (YYWW).
- △ USE CENTERLINES INDICATED ON PCB HOLE PATTERN
TO ESTABLISH ALIGNMENT BETWEEN HEADER AND
RECEPTACLE BOARDS.
- △ PLATED THROUGH HOLE REQUIREMENTS:
HOLE SIZE PRIOR TO PLATING = $\varnothing 0.420 \pm 0.013$
COPPER PLATING THICKNESS = 0.038 ± 0.013
CALCULATED FINISHED HOLE SIZE = $\varnothing 0.344 \pm 0.039$
THESE DIMENSIONS APPLY TO THE TOP 1.25mm OF
THE PCB THICKNESS FROM THE CONNECTOR MOUNTING
SIDE.
- △ CONTACT SALES FOR AVAILABILITY OF THIS STACK
HEIGHT.

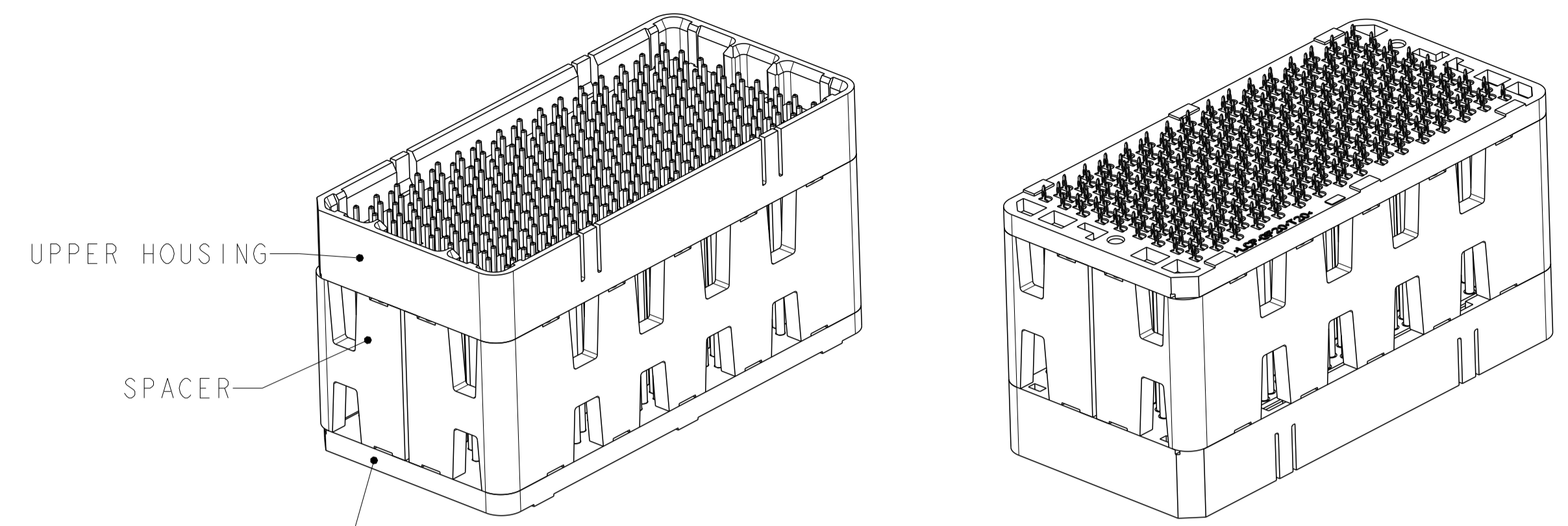


SIZE 3 HOUSING *
120 DIFFERENTIAL PAIRS
384 TOTAL SIGNAL CONTACTS

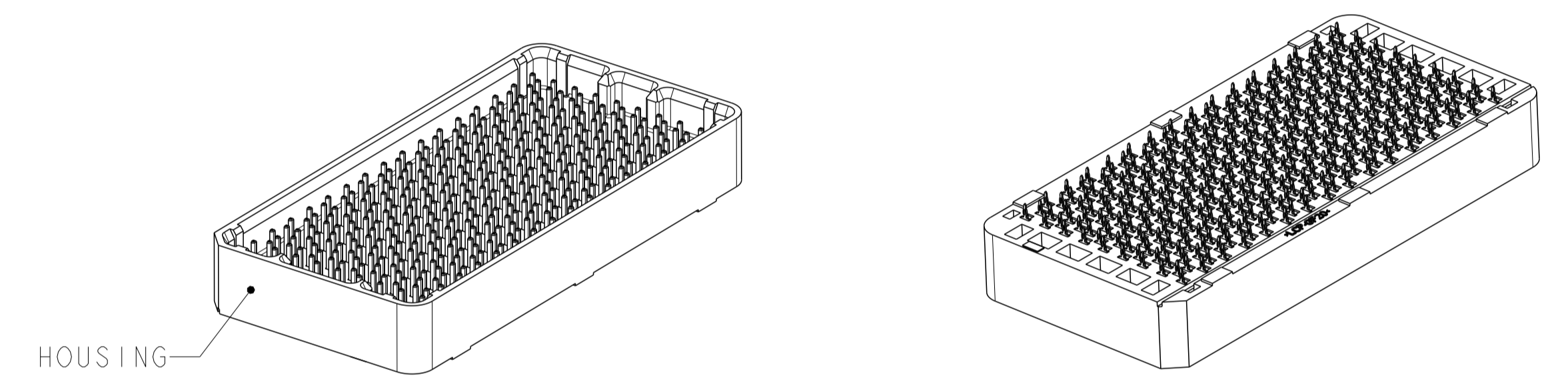
* SIZE 1 AND SIZE 2 ARE ALSO AVAILABLE

THIS DRAWING IS A CONTROLLED DOCUMENT.		DWN D. RINGLER 26FEB2009	TE Connectivity	
DIMENSIONS:		CHK D. TROUT 26FEB2009		
mm	TOLERANCES UNLESS OTHERWISE SPECIFIED:	APVD J. FEEDER 26FEB2009	NAME HEADER ASSEMBLY 120/384 SIGNAL STRADA MESA MEZZANINE CONNECTOR	
0 PLC ±	1 PLC ±0.13	PRODUCT SPEC 108-2375	SIZE CAGE CODE DRAWING NO RESTRICTED TO	
2 PLC ±0.013	3 PLC ±0.013	APPLICATION SPEC 114-13249	A100779C=2110400	
4 PLC ±	ANGLES ±1	WEIGHT	SCALE 6:1 SHEET 1 OF 4 REV A	
MATERIAL	FINISH	CUSTOMER DRAWING		

LOC	DIST	REVISIONS					
GP	00	P	LYN	DESCRIPTION	DATE	OWN	APVD
		-		SEE SHEET 1			



ISOMETRIC VIEW
 TYPICAL CONFIGURATION FOR 14mm THRU 42mm
 28mm SHOWN
 SCALE 2:1



ISOMETRIC VIEW
 TYPICAL CONFIGURATION FOR 8mm THRU 13mm
 8mm SHOWN
 SCALE 2:1

△	41.8	42mm	MATTE Sn	9-2110400-2
△	40.8	41mm	MATTE Sn	9-2110400-1
YES	39.8	40mm	MATTE Sn	9-2110400-0
△	38.8	39mm	MATTE Sn	8-2110400-9
△	37.8	38mm	MATTE Sn	8-2110400-8
△	36.8	37mm	MATTE Sn	8-2110400-7
△	35.8	36mm	MATTE Sn	8-2110400-6
△	34.8	35mm	MATTE Sn	8-2110400-5
△	33.8	34mm	MATTE Sn	8-2110400-4
△	32.8	33mm	MATTE Sn	8-2110400-3
△	31.8	32mm	MATTE Sn	8-2110400-2
△	30.8	31mm	MATTE Sn	8-2110400-1
△	29.8	30mm	MATTE Sn	8-2110400-0
△	28.8	29mm	MATTE Sn	7-2110400-9
YES	27.8	28mm	MATTE Sn	7-2110400-8
△	26.8	27mm	MATTE Sn	7-2110400-7
△	25.8	26mm	MATTE Sn	7-2110400-6
△	24.8	25mm	MATTE Sn	7-2110400-5
△	23.8	24mm	MATTE Sn	7-2110400-4
YES	22.8	23mm	MATTE Sn	7-2110400-3
△	21.8	22mm	MATTE Sn	7-2110400-2
△	20.8	21mm	MATTE Sn	7-2110400-1
△	19.8	20mm	MATTE Sn	7-2110400-0
△	18.8	19mm	MATTE Sn	6-2110400-9
△	17.8	18mm	MATTE Sn	6-2110400-8
△	16.8	17mm	MATTE Sn	6-2110400-7
△	15.8	16mm	MATTE Sn	6-2110400-6
△	14.8	15mm	MATTE Sn	6-2110400-5
△	13.8	14mm	MATTE Sn	6-2110400-4
△	12.8	13mm	MATTE Sn	6-2110400-3
△	11.8	12mm	MATTE Sn	6-2110400-2
△	10.8	11mm	MATTE Sn	6-2110400-1
YES	9.8	10mm	MATTE Sn	6-2110400-0
△	8.8	9mm	MATTE Sn	5-2110400-9
△	7.8	8mm	MATTE Sn	5-2110400-8
TOOLED	DIM H	STACK HEIGHT	CONTACT TAIL PLATING	PART NUMBER

△	41.8	42mm	Sn/Pb	4-2110400-2
△	40.8	41mm	Sn/Pb	4-2110400-1
YES	39.8	40mm	Sn/Pb	4-2110400-0
△	38.8	39mm	Sn/Pb	3-2110400-9
△	37.8	38mm	Sn/Pb	3-2110400-8
△	36.8	37mm	Sn/Pb	3-2110400-7
△	35.8	36mm	Sn/Pb	3-2110400-6
△	34.8	35mm	Sn/Pb	3-2110400-5
△	33.8	34mm	Sn/Pb	3-2110400-4
△	32.8	33mm	Sn/Pb	3-2110400-3
△	31.8	32mm	Sn/Pb	3-2110400-2
△	30.8	31mm	Sn/Pb	3-2110400-1
△	29.8	30mm	Sn/Pb	3-2110400-0
△	28.8	29mm	Sn/Pb	2-2110400-9
YES	27.8	28mm	Sn/Pb	2-2110400-8
△	26.8	27mm	Sn/Pb	2-2110400-7
△	25.8	26mm	Sn/Pb	2-2110400-6
△	24.8	25mm	Sn/Pb	2-2110400-5
△	23.8	24mm	Sn/Pb	2-2110400-4
YES	22.8	23mm	Sn/Pb	2-2110400-3
△	21.8	22mm	Sn/Pb	2-2110400-2
△	20.8	21mm	Sn/Pb	2-2110400-1
△	19.8	20mm	Sn/Pb	2-2110400-0
△	18.8	19mm	Sn/Pb	1-2110400-9
△	17.8	18mm	Sn/Pb	1-2110400-8
△	16.8	17mm	Sn/Pb	1-2110400-7
△	15.8	16mm	Sn/Pb	1-2110400-6
△	14.8	15mm	Sn/Pb	1-2110400-5
△	13.8	14mm	Sn/Pb	1-2110400-4
△	12.8	13mm	Sn/Pb	1-2110400-3
△	11.8	12mm	Sn/Pb	1-2110400-2
△	10.8	11mm	Sn/Pb	1-2110400-1
YES	9.8	10mm	Sn/Pb	1-2110400-0
△	8.8	9mm	Sn/Pb	2110400-9
△	7.8	8mm	Sn/Pb	2110400-8
TOOLED	DIM H	STACK HEIGHT	CONTACT TAIL PLATING	PART NUMBER

THIS DRAWING IS A CONTROLLED DOCUMENT. DWG: D. RINGLER 26FEB2009
 CHK: D. TROUT 26FEB2009
 APVD: J. FEEDER 26FEB2009

STE TE Connectivity

NAME: HEADER ASSEMBLY
 120/384 SIGNAL
 STRADA MESA MEZZANINE CONNECTOR

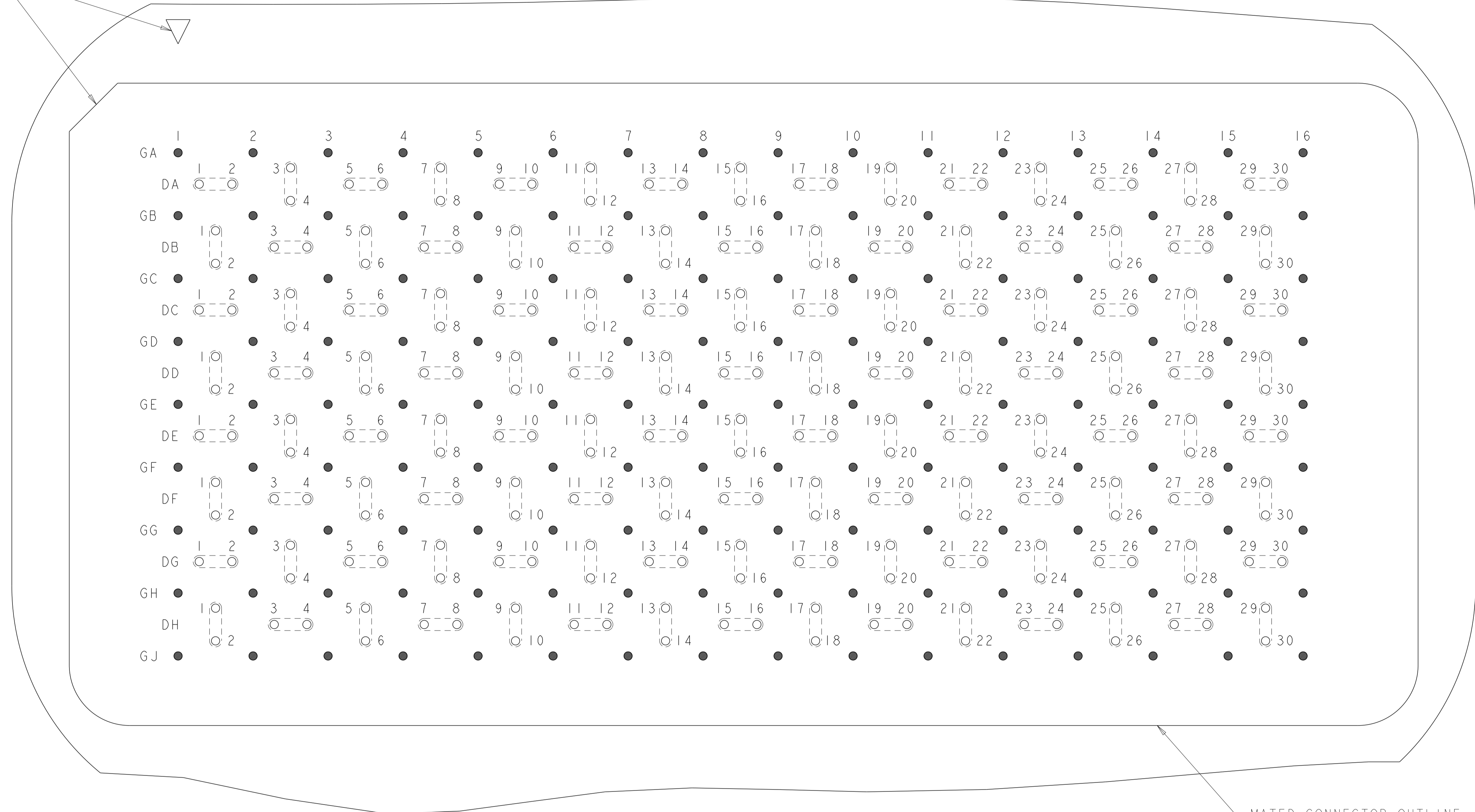
PRODUCT SPEC: 108-2375
 APPLICATION SPEC: 114-13249

SIZE: A1 CAGE CODE: 2110400 DRAWING NO: 100779
 WEIGHT: -
 CUSTOMER DRAWING

RESTRICTED TO: -
 SCALE: 6:1 SHEET 2 OF 4 REV A


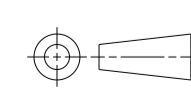
LOC	DIST	REVISIONS					
		P	LTN	DESCRIPTION	DATE	DWN	APVD
GP	00	-	-	SEE SHEET 1	-	-	-

AI CORNER INDICATORS.

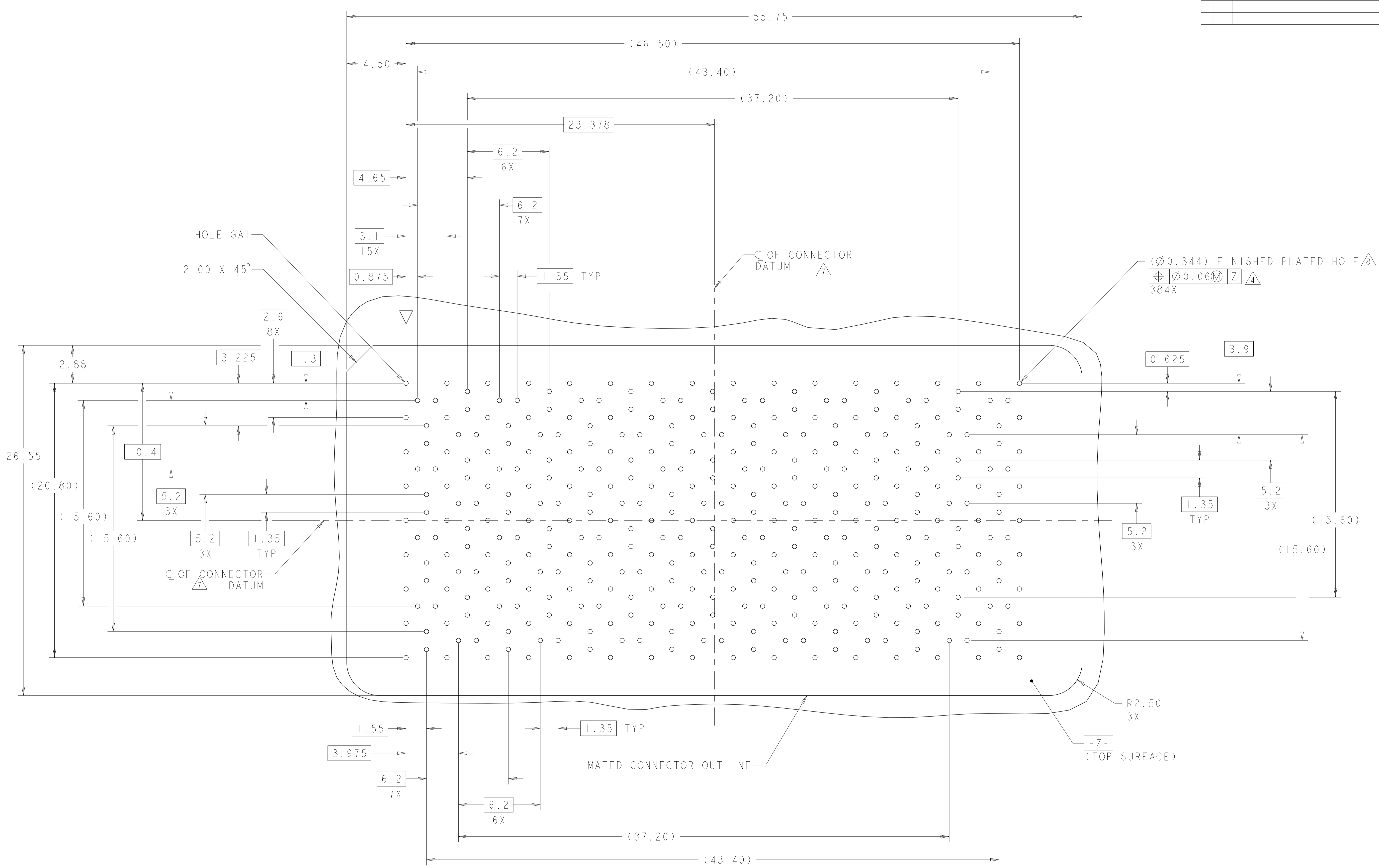


MATED CONNECTOR OUTLINE
SEE SHEET 4 FOR LOCATION TO HOLES

PCB LAYOUT AND PIN IDENTIFICATION 
SHOWN FROM CONNECTOR SIDE
SCALE 10:1

THIS DRAWING IS A CONTROLLED DOCUMENT.		DWN D. RINGLER 26FEB2009	 TE Connectivity
DIMENSIONS:		CHK D. TROUT 26FEB2009	
mm	TOLERANCES UNLESS OTHERWISE SPECIFIED:	APVD J. FEEDER 26FEB2009	NAME HEADER ASSEMBLY 120/384 SIGNAL STRADA MESA MEZZANINE CONNECTOR
	0 PLC ± 2 PLC ±0.13 3 PLC ±0.013 4 PLC ± ANGLES ±1	PRODUCT SPEC 108-2375 APPLICATION SPEC 114-13249	SIZE A100779
MATERIAL	FINISH	WEIGHT	DRAWING NO C=2110400
			RESTRICTED TO CUSTOMER DRAWING
		SCALE 6:1	SHEET 3 OF 4
			REV A

LOC		DIST		REVISIONS			
P	LTN	DATE	DMN	APVD	DESCRIPTION	DATE	DMN
-	-	-	-	-	SEE SHEET 1	-	-



PCB HOLE PATTERN
 SHOWN FROM CONNECTOR SIDE
 SCALE 7:1

THIS DRAWING IS A CONTROLLED DOCUMENT.		DMN D. RINGLER 26FEB2009	TE Connectivity
DIMENSIONS:		CHK D. TROUT 26FEB2009	
mm	TOLERANCES UNLESS OTHERWISE SPECIFIED:	APVD J. FEEDER 26FEB2009	NAME HEADER ASSEMBLY
0 PLC ± 1 PLC ±0.13 2 PLC ±0.13 3 PLC ±0.13 4 PLC ± ANGLES ±1 FINISH	0 PLC ± 1 PLC ±0.13 2 PLC ±0.13 3 PLC ±0.13 4 PLC ± ANGLES ±1 FINISH	PRODUCT SPEC 108-2375	RESTRICTED TO
MATERIAL	WEIGHT	APPLICATION SPEC 114-13249	SIZE A100779
		CUSTOMER DRAWING	SCALE 6:1 SHEET 4 OF 4 REV A

X-ON Electronics

Largest Supplier of Electrical and Electronic Components

Click to view similar products for [High Speed/Modular Connectors](#) category:

Click to view products by [TE Connectivity](#) manufacturer:

Other Similar products are found below :

[650827-1](#) [74040-1346](#) [1410191-1](#) [1410368-3](#) [1410964-2](#) [1410326-3](#) [1410367-3](#) [1410971-4](#) [1467833-1](#) [2000877-1](#) [2000878-1](#) [2041314-1](#)
[2065387-1](#) [2187307-1](#) [163P](#) [1934290-1](#) [2000875-1](#) [2065917-1](#) [2102736-2](#) [FSR-40](#) [2169868-2](#) [22354-8](#) [437-5040-000](#) [5-1393565-0](#) [039-](#)
[0246-000](#) [0761601016](#) [0784461022](#) [10123159-12ELF](#) [030-2415-003/100 PK](#) [030-7380-004](#) [030-2494-001](#) [532939-1](#) [5532901-3](#) [3-1469268-](#)
[7](#) [74748-102LF](#) [10041743-101LF](#) [10066670-100002LF](#) [1-533915-1](#) [249-4515-000](#) [7-1469373-3](#) [DL2-2J/S](#) [2000713-8](#) [2000713-7](#)
[10124313-101LF](#) [3011-21](#) [757105208](#) [EBTF-4-10-2.0-S-RA-1](#) [430305-001](#) [4395800100](#) [8140115](#)