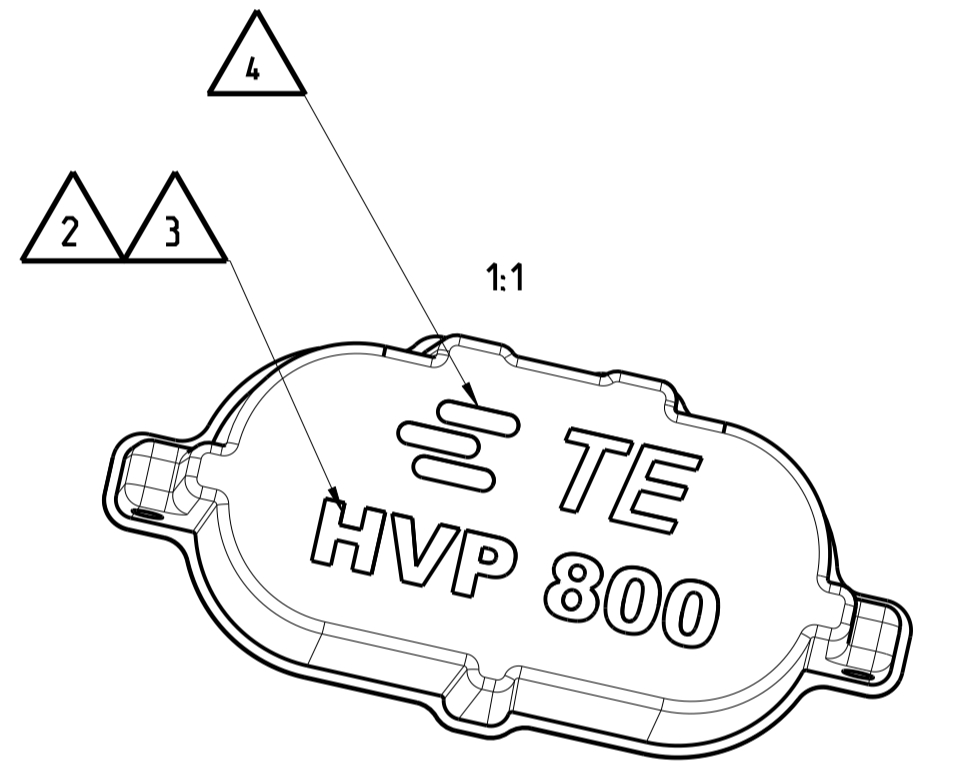
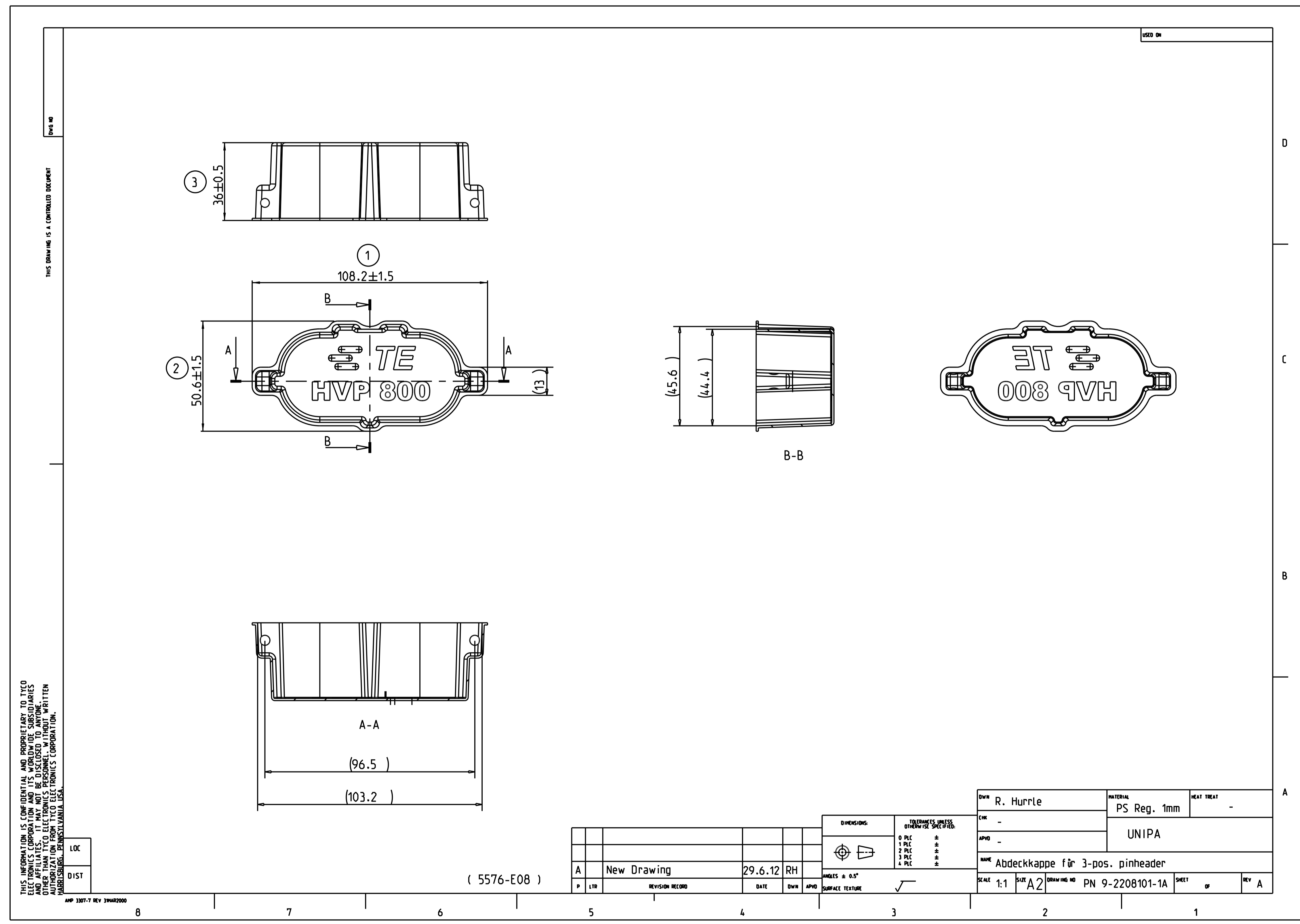


REVISIONS				
P	LTR	DESCRIPTION	DATE	DWN APVD
A		NEW DRAWING	27AUG2014	W SA W BA

NOTES
Bemerkungen

- IN CASE OF DISCREPANCIES BETWEEN GERMAN AND ENGLISH TEXT THE GERMAN TEXT IS BINDING
Im Falle von Unterschieden zwischen dem deutschen und dem englischen Text ist der deutsche Text verbindlich
- CHARACTERS ACCORDING TO DIN 1451
Mittelschrift nach DIN 1451
- CHARACTERS 8.5MM SUNK
Schrifthoehe 8.5mm vertieft
- TE-TRADEMARK ACC TO TEC-202-36
TE-Warenzeichen nach TEC-202-36
- PACKAGING: BULK PACKAGING IN PLASTIC BAG AND CORRUGATED SHIPPING BOX
Verpackung: Schuetzgut in Beutel und Versandkarton



THIS INFORMATION IS CONFIDENTIAL AND PROPRIETARY TO TYCO ELECTRONICS CORPORATION AND ITS WORLDWIDE SUBSIDIARIES AND AFFILIATES. IT MAY NOT BE DISCLOSED TO ANYONE WITHOUT THE WRITTEN AUTHORIZATION FROM TYCO ELECTRONICS CORPORATION, HARRISBURG, PENNSYLVANIA, USA.

LOC
DIST

(5576-E08)

P	LTR	REVISION RECORD	DATE	DWN	APVD
A		New Drawing	29.6.12	RH	

DIMENSIONS:	
0 PLC	*
1 PLC	*
2 PLC	*
3 PLC	*
4 PLC	*

DWN	R. Hurrle	MATERIAL	PS Reg. 1mm	HEAT TREAT	-
CHK	-	UNIPA			
APVD	-	NAME			Abdeckkappe für 3-pos. pinheader
SCALE	1:1	SIZE	A2	DRAWING NO	PN 9-2208101-1A
				SHEET	OF
				REV	A

THIS DRAWING IS A CONTROLLED DOCUMENT.		DWN	W. Saenger	27AUG2014	TE Connectivity	
DIMENSIONS:		CHK	H. Vu	27AUG2014		
mm	TOLERANCES UNLESS OTHERWISE SPECIFIED:	APVD	W. Balles	28AUG2014	NAME	3POL. PROTECTION CAP
	0 PLC ±	PRODUCT SPEC			3pol. Schutzkappe	
	1 PLC ±	APPLICATION SPEC				
	2 PLC ±	WEIGHT				
	3 PLC ±	SIZE		A 1		
	4 PLC ±	CAGE CODE		-		
	ANGLES	DRAWING NO		C=2208101		
	FINISH	RESTRICTED TO				
MATERIAL		Customer Drawing		SCALE	1:1	
				SHEET	1 OF 1	
				REV	A	

X-ON Electronics

Largest Supplier of Electrical and Electronic Components

Click to view similar products for [Automotive Connectors](#) category:

Click to view products by [TE Connectivity](#) manufacturer:

Other Similar products are found below :

[003-018-000](#) [60403001](#) [60993906-B](#) [M902-2131](#) [M902-2161](#) [M902-2344](#) [72.330.1035.1](#) [73.353.4028.0](#) [F119300-B](#) [F166900](#) [F258300-B](#)
[F358300-B](#) [F407400](#) [F444110](#) [F487000](#) [F509500B-B](#) [827153-1](#) [8N1515-32-24P](#) [9-1326729-8](#) [925474-1](#) [928905-1](#) [964562-4](#) [968782-1](#)
[GT17SA-8DS-HU](#) [98891-1012](#) [98947-1016](#) [12004147](#) [12004475-L](#) [12010290](#) [12010309-B](#) [12015454](#) [12020219-B](#) [12041318-B](#) [12052225-](#)
[L](#) [12052466](#) [12064869](#) [12004327-B](#) [12015308](#) [12015384](#) [12015909](#) [1-21030-1](#) [12041254](#) [12041318](#) [12047946-B](#) [12047957](#) [12047957-L](#)
[12059473](#) [12066261](#) [12110546](#) [12110546-B](#)