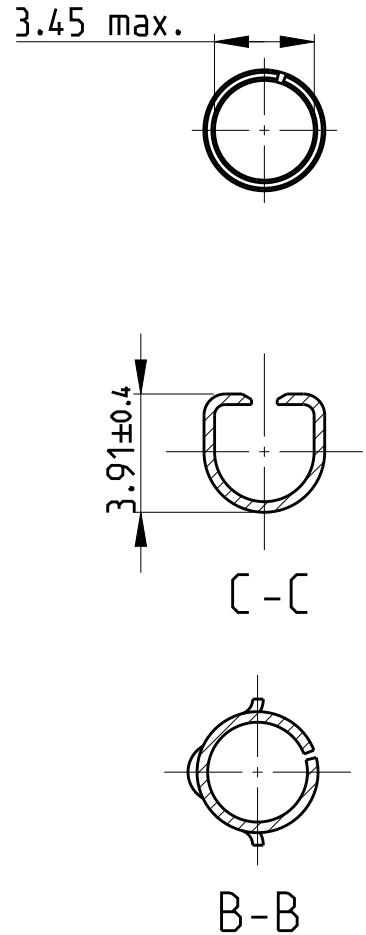
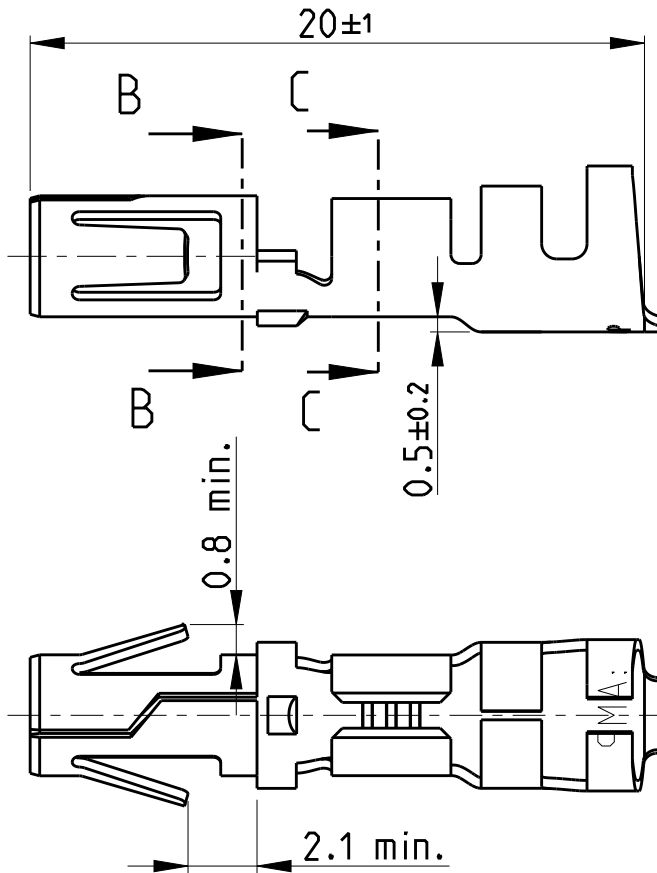


REVISIONS

P	LTR	DESCRIPTION	DATE	DWN	APVD
	N2	REVISED PER ECR-17-006577	15MAY2017	JB	DZ
	N3	REVISED PER ECR-20-005051	27OCT2020	SS	VS



NOTE:

1 OBSOLETE PARTS: OBSOLETE CIS STREAMLINING PER D.RENAUD/D.SINISI

	OBSOLETE	2.1-5.3mm <sup>2</sup>	max. 4.5mm	Bronze	None	925663-5
	OBSOLETE	2.1-5.3mm <sup>2</sup>	max. 4.5mm	Bronze	Plain	925663-4
1	OBSOLETE	2.1-5.3mm <sup>2</sup>	max. 4.5mm	Bronze	Silver	925663-3
	OBSOLETE	2.1-5.3mm <sup>2</sup>	max. 4.5mm	Bronze	Pre-tin	925663-2
		2.1-5.3mm <sup>2</sup>	max. 4.5mm	Brass	Pre-tin	925663-1
	DGB	Insulation Ø	Material	Finish	Part no.	

2008  
 RELEASED FOR PUBLICATION  
 ALL RIGHTS RESERVED.  
 THIS DRAWING IS UNPUBLISHED.  
 COPYRIGHT 2008  
 BY -

DIMENSIONS: mm		DWN J. Salo 26NOV2008	MATERIAL -	FINISH -
TOLERANCES UNLESS OTHERWISE SPECIFIED:		CHK R. Sole 26NOV2008	TE Connectivity	
0 PLC ± 1 P/C ± 2 PLC ±0.4 3 P/C ± 4 P/L ± ANGLES ±1° 30'		APVD P.E.Grassano 26NOV2008		
PRODUCT SPEC		NAME .140 DIA SOCKET	RESTRICTED TO	
APPLICATION SPEC		SIZE A4	CAGE CODE -	DRAWING NO C-925663
WEIGHT -		CUSTOMER DRAWING		
		SCALE 4:1	SHEET 1 OF 1	REV N3

## X-ON Electronics

Largest Supplier of Electrical and Electronic Components

*Click to view similar products for [Jones Plugs & Sockets](#) category:*

*Click to view products by [TE Connectivity](#) manufacturer:*

Other Similar products are found below :

[750-1103](#) [HDRA-E68LFD-7C](#) [MR-8LK2+](#) [S-2408-CCE](#) [302R](#) [30-9733](#) [30-9798](#) [38330-0203](#) [38330-1908](#) [38330-2604](#) [38330-2610](#) [38330-4015](#) [38330-5704](#) [38330-6418](#) [38331-0804](#) [38331-1406](#) [38331-1410](#) [38331-3908](#) [38331-8206](#) [38335-5104](#) [38339-0100](#) [38339-0374](#) [38540-0405](#) [38540-0613](#) [38540-1505](#) [38540-1909](#) [38540-1913](#) [38540-4209](#) [38540-6412](#) [38540-9405](#) [38541-0008](#) [38541-0009](#) [38541-1212](#) [38541-3008](#) [38541-5510](#) [38542-0806](#) [38542-1006](#) [38549-0213](#) [38549-0751](#) [312R](#) [333R](#) [38330-1512](#) [38330-1518](#) [38330-1903](#) [38330-8503](#) [38331-0808](#) [38331-1415](#) [38331-1421](#) [38331-3803](#) [38331-3806](#)