

4

3

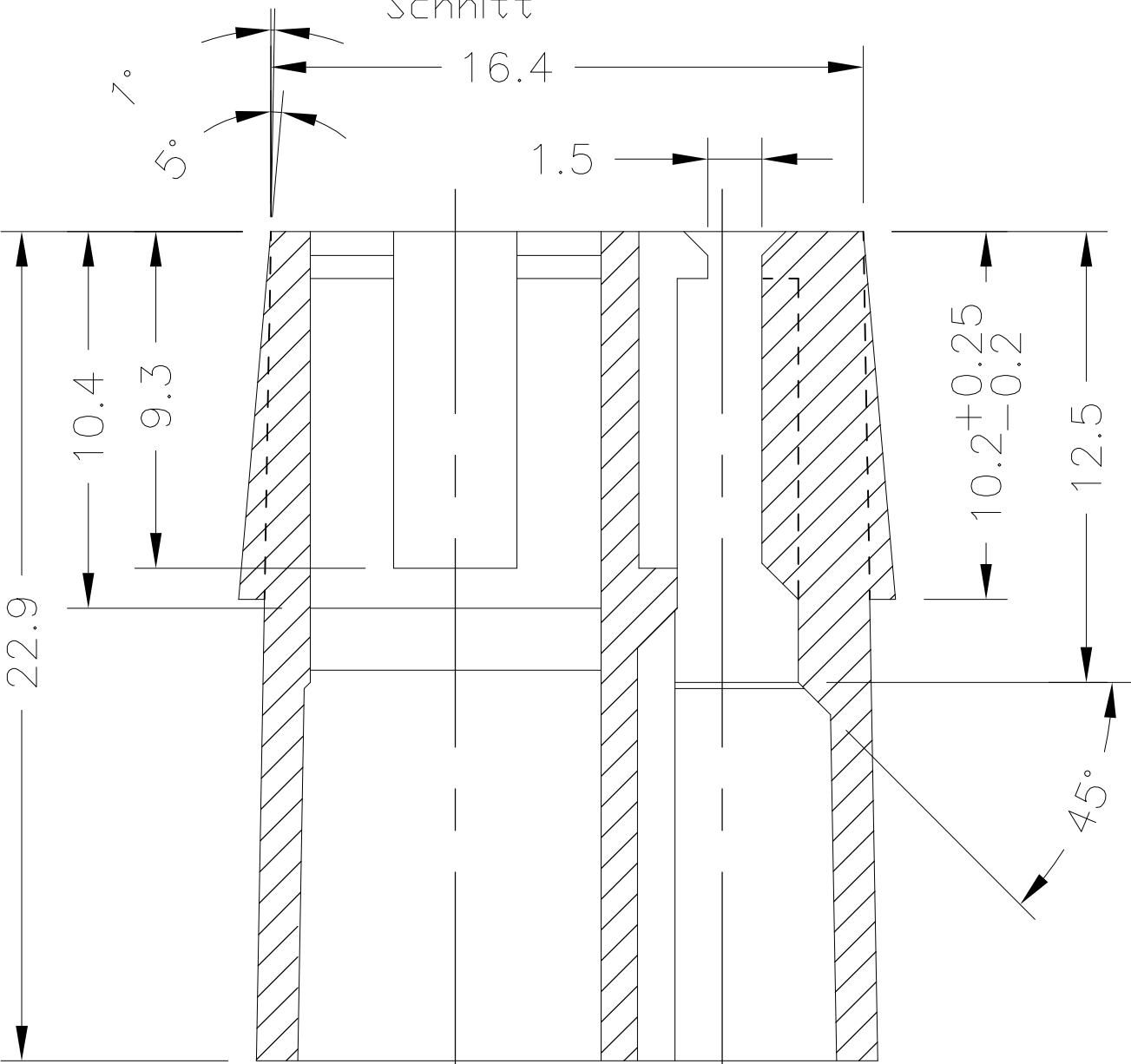
2

1

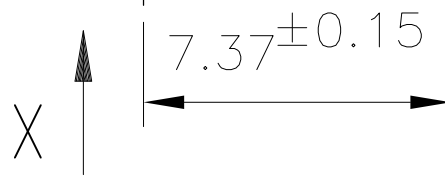
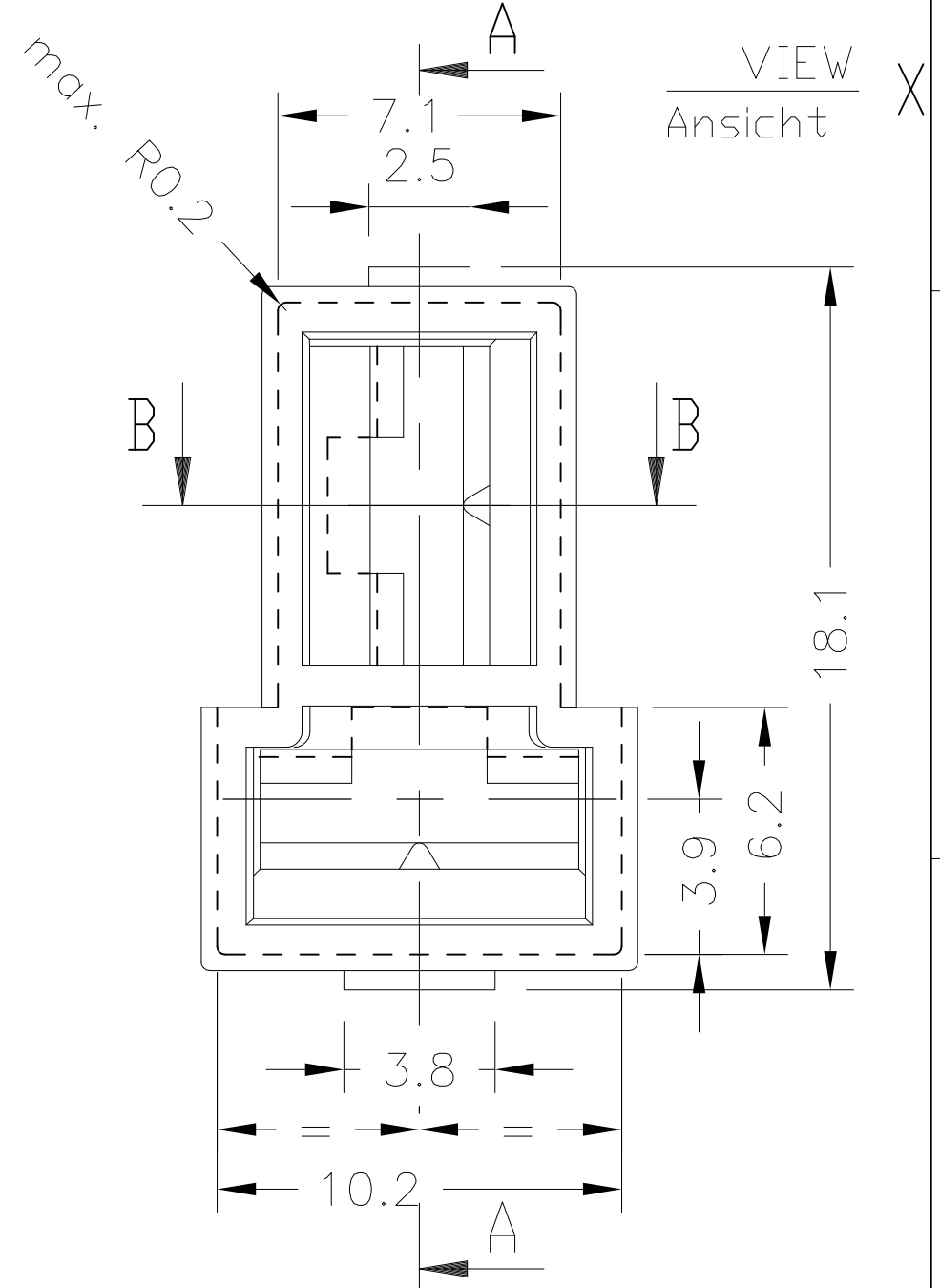
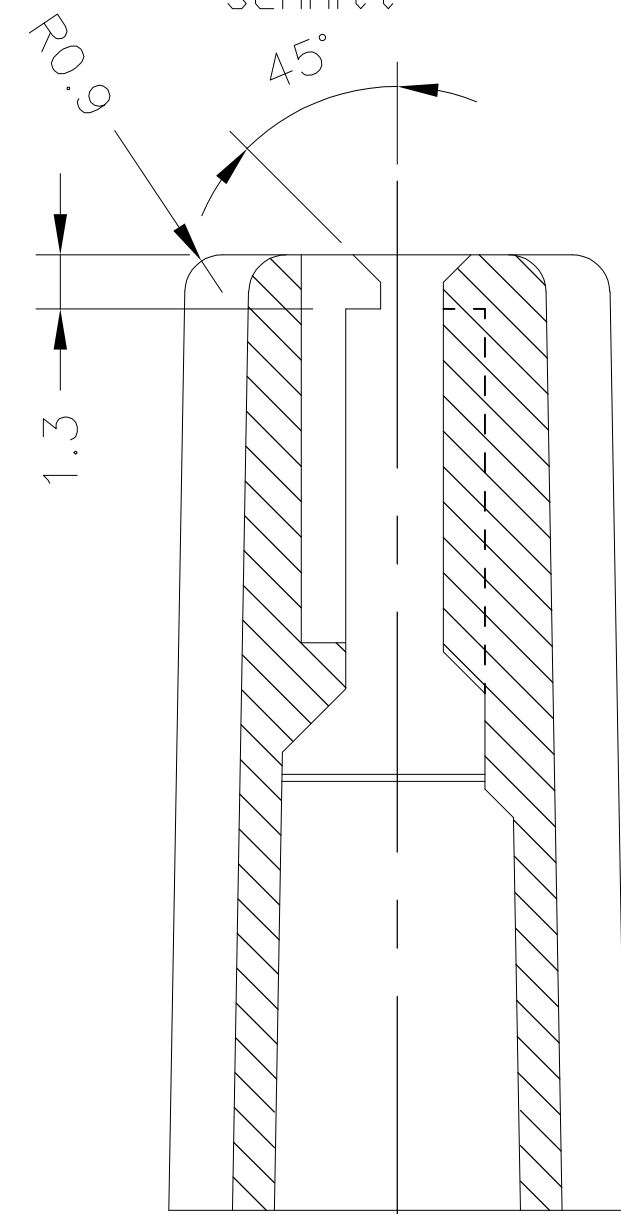
THIS DRAWING IS UNPUBLISHED. RELEASED FOR PUBLICATION - , 1978.  
 © COPYRIGHT 1977 BY TYCO ELECTRONICS CORPORATION. ALL INTERNATIONAL RIGHTS RESERVED.

LOC	DIST	REVISIONS			
P	LTR	DESCRIPTION	DATE	DWN	APVD
-	-	C1	DWG REACTIVATED AND UPDATED PER PART STATUS	18-JAN-11	PKS MP

SECTION A-A  
Schnitt A-A



SECTION B-B  
Schnitt B-B



THIS DRAWING IS A CONTROLLED DOCUMENT.		DWN Meisel 23-JUN-78	Tyco Electronics AMP GmbH D-64625, Bensheim	
DIMENSIONS: mm		CHK John 26-JUN-78	NAME	
TOLERANCES UNLESS OTHERWISE SPECIFIED:		APVD -	2 POS. 6.3mm FASTIN-FASTON REC. HOUSING 2pol. 6.3mm Fastin-Faston Steckhuelsengeh	
0 PLC ± 0.2		PRODUCT SPEC -	SIZE A3	CAGE CODE 00779
1 PLC ± -		APPLICATION SPEC -	DRAWING NO C-926474	RESTRICTED TO -
2 PLC ± -		WEIGHT -	SCALE 5:1	SHEET 1 OF 1
3 PLC ± -		CUSTOMER DRAWING	REV C1	
4 PLC ± -				
ANGLES ± 1.5				
MATERIAL PA66				
FINISH SEE TABLE				

## X-ON Electronics

Largest Supplier of Electrical and Electronic Components

*Click to view similar products for [Terminals](#) category:*

*Click to view products by [TE Connectivity](#) manufacturer:*

Other Similar products are found below :

[00-054007-01074-6](#) [00-054007-70206-1](#) [00-054007-70210-8](#) [00-054007-70217-7](#) [00-054007-70226-9](#) [00-054007-70228-3](#) [00-054007-70248-1](#) [00-054007-70256-6](#) [00-054007-70301-3](#) [00-054007-70316-7](#) [00-054007-49560-4](#) [00-054007-70209-2](#) [00-054007-70225-2](#) [00-054007-70227-6](#) [00-054007-70231-3](#) [00-054007-70241-2](#) [00-054007-70242-9](#) [00-054007-70244-3](#) [00-054007-70246-7](#) [00-054007-70263-4](#) [00-054007-70288-7](#) [00-054007-70290-0](#) [00-054007-70300-6](#) [00-054007-70304-4](#) [01-2065-1-0216](#) [01-2900-1-04412](#) [00581P0075](#) [600TS-10](#) [60205-1](#) [604200-1](#) [605601-1](#) [60598-1-CUT-TAPE](#) [61314-6-C](#) [61810-3](#) [61-S](#) [61-SN](#) [626-0194](#) [62-NBM-A](#) [62-SN](#) [62-SP](#) [63-S](#) [640179-1](#) [M55155/059I03](#) [M55155/079C01](#) [M55155/099H02](#) [M55155/109H01](#) [M55155/109H02](#) [M55155/12XH05](#) [M55155/16XH02](#) [M55155/29-5S](#)